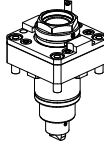
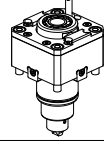
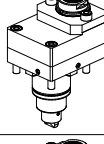
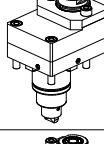
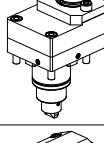
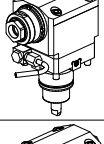
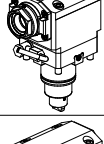
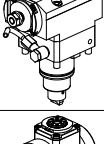
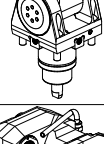
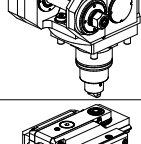
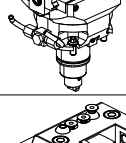
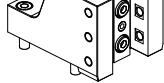
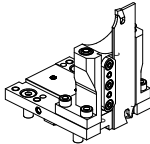
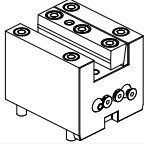
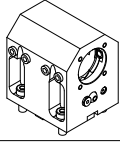

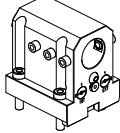
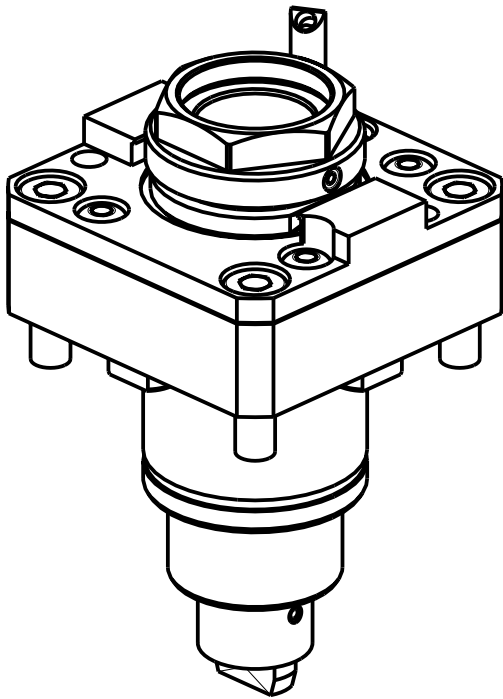
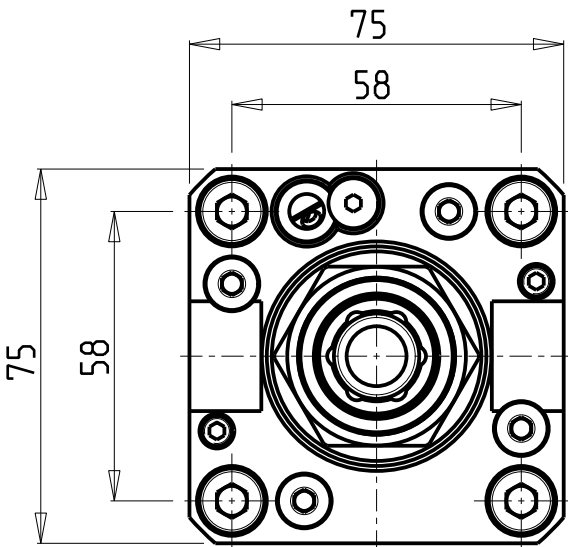
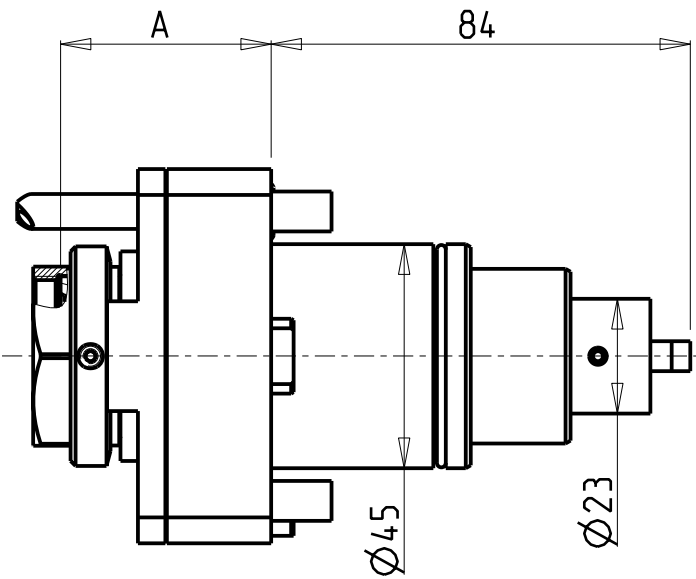


		PAGINA Page Seite
MODULO MOTORIZZATO RADIALE MTSK Radial MTSK driven tool Radial MTSK angetriebenes Werkzeug		VCT010.5.00.K
MODULO MOTORIZZATO RADIALE Radial driven tool Radial angetriebenes Werkzeug		VCT010.5.01
MODULO MOTORIZZATO RADIALE DISASSATO IN Z 36mm Radial driven tool re-directed in Z by 36mm Radial angetriebenes Werkzeug achsversetzt in Z um 36mm		VCT030.5.10
MODULO MOTORIZZATO RADIALE MOLTIPLICATO I=1:2 DISASSATO IN Z 36mm Radial geared-up I=1:2 driven tool re-directed in Z by 36mm Radial angetriebenes Werkzeug uebersetzt I=1:2 achsversetzt in Z um 36mm		VCT030.5.30
MODULO MOTORIZZATO RADIALE MOLTIPLICATO I=1:3 DISASSATO IN Z 36mm Radial geared-up I=1:3 driven tool re-directed in Z by 36mm Radial angetriebenes Werkzeug uebersetzt I=1:3 achsversetzt in Z um 36mm		VCT030.5.50
MODULO MOTORIZZATO ASSIALE Axial driven tool Axial angetriebenes Werkzeug		VCT150.5.00
MODULO MOTORIZZATO ASSIALE MTSK Axial MTSK driven tool Axial MTSK angetriebenes Werkzeug		VCT150.5.00.K
MODULO MOTORIZZATO ASSIALE MOLTIPLICATO I=1:2 H=65mm Axial geared-up I=1:2 driven tool H=65mm Axial angetriebenes Werkzeug uebersetzt I=1:2 H=65mm		VCT200.5.10
MODULO MOTORIZZATO ORIENTABILE ±90° ±90° adjustable angle driven tool Angetriebenes Werkzeug schwenkbar ±90°		VCT335.5.00
MODULO MOTORIZZATO PORTACREATORE Driven gear hobber Angetriebenes Zahnradwaelzfraes-Werkzeug		VCT340.5.20
MODULO MOTORIZZATO STOZZATORE CORSA 25mm H=75mm Slotting driven tool 25mm stroke H=75mm Keilnutenstossmaschine 25mm Hub H=75mm		VCT360.5.02
PORTAUTENSILE RADIALE SINGOLO QD=20mm / QD=3/4" Radial single static tool QD=20mm / QD=3/4" Radial Single-Werkzeughalter QD=20mm / QD=3/4"		VCT420.5.00

		PAGINA Page Seite
PORTAUTENSILE RADIALE PER LAMA Radial blade holder Radial Abstechhalter		VCT520.5.10
PORTAUTENSILE ASSIALE SINGOLO QD=20mm / QD=3/4" Axial single static tool QD=20mm / QD=3/4" Axial Single-Werkzeughalter QD=20mm / QD=3/4"		VCT550.5.00
PORTAUTENSILE ASSIALE PER BARENO Ø40mm H=65mm Axial single boring bar holder Ø40mm H=65mm Axial Bohrhälter Ø40mm H=65mm	 	VCT630.5.10
PORTAUTENSILE ASSIALE PER BARENO Ø32mm / Ø1 1/4" H=65mm Axial single boring bar holder Ø32mm / Ø1 1/4" H=65mm Axial Bohrhälter Ø32mm / Ø1 1/4" H=65mm		VCT650.5.10



PER PORTAUTENSILI MODULARI MTSK-32 VEDI PAG. TBL300-1-32
FOR MTSK-32 QUIK CHANGE TOOLHOLDERS CLAMPINGS SEE PAGE TBL300-1-32
FUER MTSK-32 MODULARE WERKZEUGAUFNAHMEN SIEHE SEITE TBL300-1-32

Cod. MT	Mandrino Spindle Spindel	I	RPM	Coppia Max Max Torque Max Drehmoment	Lubr.interna Coolant through Innenkuehlung	Lubrificazione est. Ext. coolant Aussenkuehlung	A	CHIAVI NON INCLUSE Keys not included Schluessel nicht einbegriffen	
DW 01780132	MTSK-32	1:1	6000	35Nm	-	X	42.2	CHUB36	OKU0290009 *
DW 01780232	MTSK-32	1:1	6000	35Nm	P=30bar	X	49.7	CHUB36	OKU0290009 *

- Chiave inclusa
- Key included
- Schluessel inbegriffen

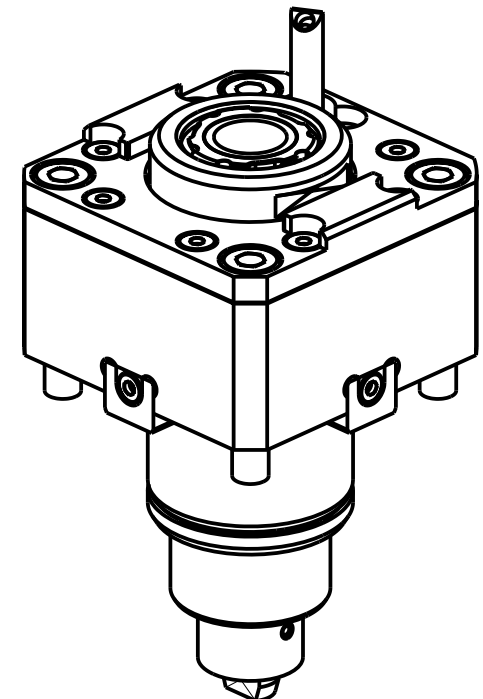
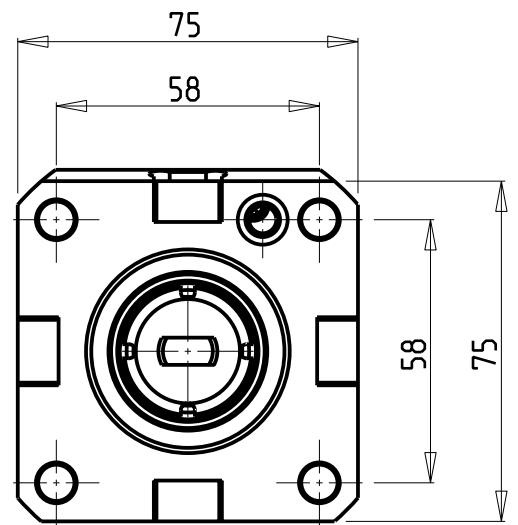
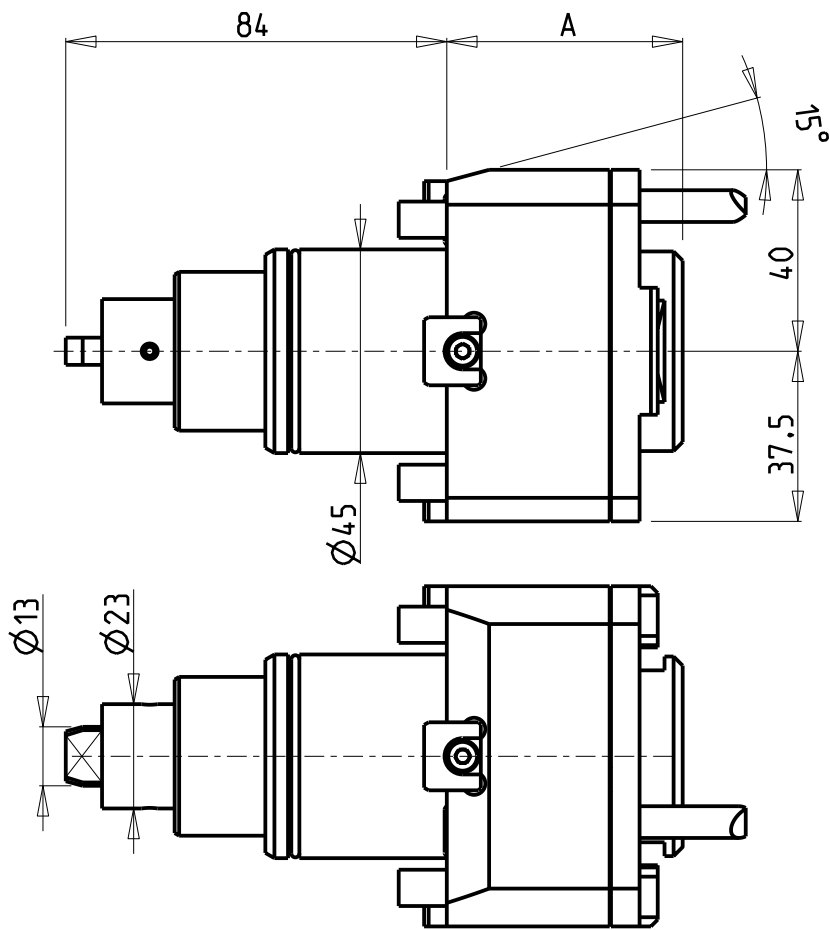
VICTOR
MOD: VTURN-NP16CM

MODULO MOTORIZZATO RADIALE MTSK
Radial MTSK driven tool
Radial MTSK angetriebenes Werkzeug

M.T. srl
Via Casino Albini 480
Tel. 0541/956034-957884
Fax 0541/956341
47842 S. GIOVANNI IN M. (RN)
e-mail: mtma@mtmarchetti.com
<http://www.mtmarchetti.com>

PRODUZIONE MODULI ROTANTI

PAGINA VCT010-5-00-K



Cod. MT	Mandrino Spindle Spindel	I	RPM	Coppia Max Max Torque Max Drehmoment	Lubrificazione int. Coolant through Innenkuehlung	Lubrificazione est. Ext. coolant Aussenkuehlung	A	CHIAVI NON INCLUSE Keys not included Schlüssel nicht inbegriffen		
DW 02000325	ERA25	1:1	6000	35Nm	-	X	52	CHUB27	CHTAER25ZC	OKU0290009
DW 02000425	ERA25	1:1	6000	35Nm	P=30bar	X	60	CHUB27	CHTAER25ZC	OKU0290009

- Chiave inclusa
- Key included
- Schlüssel inbegriffen

VICTOR

MOD: VTURN-NP16CM

MODULO MOTORIZZATO RADIALE

Radial driven tool

Radial angetriebenes Werkzeug

M.T. srl

Via Casino Albini 480

Tel. 0541/956034-957884

Fax 0541/956341

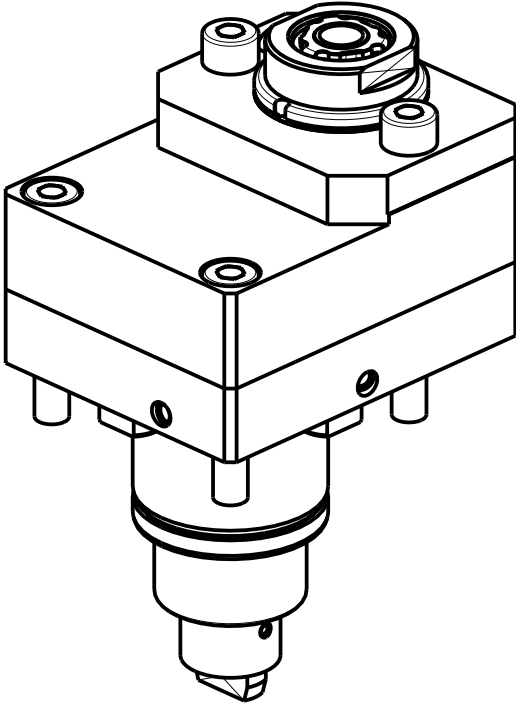
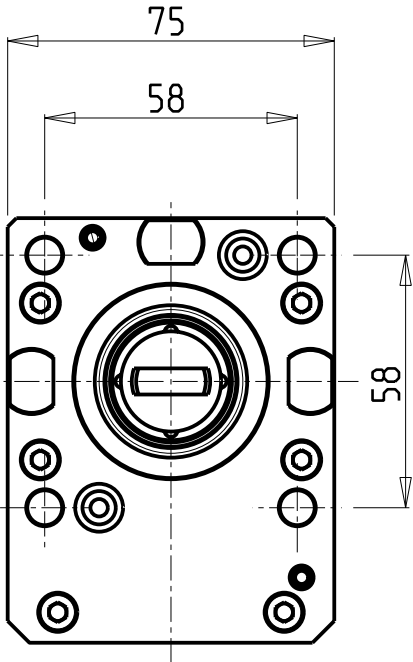
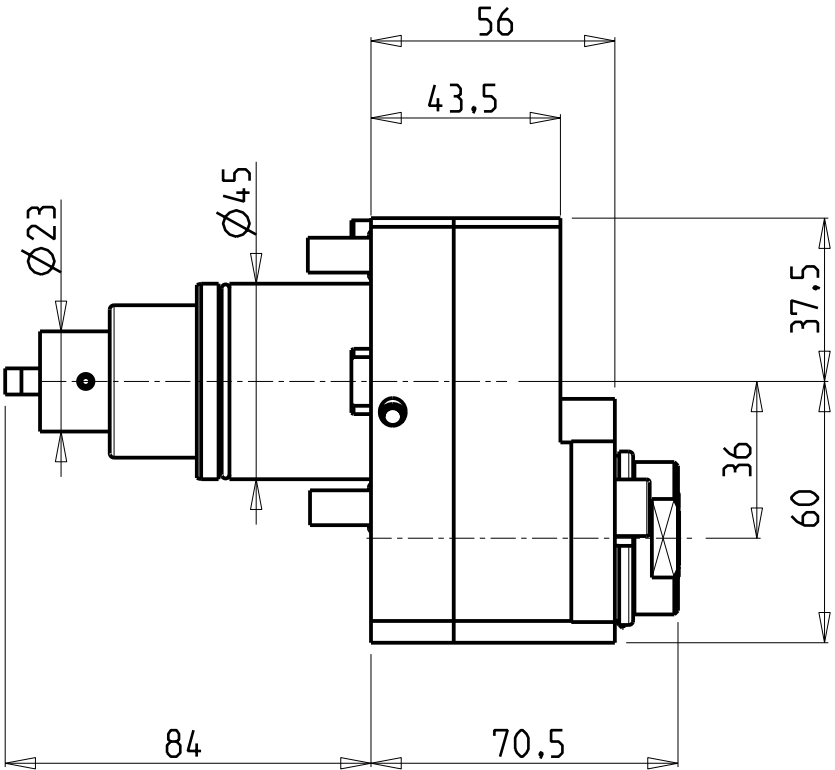
47842 S. GIOVANNI IN M. (RN)

e-mail: mtma@mtmarchetti.com

<http://www.mtmarchetti.com>

PRODUZIONE MODULI ROTANTI

PAGINA VCT010-5-01



• Chiave inclusa

• Key included

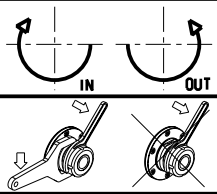
• Schlüssel inbegriffen

Cod. MT	Mandrino Spindle Spindel	I	RPM	Coppia Max Max Torque Max Drehmoment	Reversibile lato mandrino/contromandrino Reversible sub/main spindle side Umkehrbare Spindel-seite/ Gegenspindel-seite	Lubrificazione int. Coolant through Innenkuehlung	Lubrificazione est. Ext. coolant Aussenkuehlung	CHIAVI NON INCLUSE Keys not included Schlüssel nicht einbegriffen		
DW 01890316	ERA16	1:1	6000	25Nm	X	-	X	CHUB30	CHUB19_SP3	CHTAER16ZC ■
DW 01890416	ERA16	1:1	6000	25Nm	X	P=70bar	X	CHUB30	CHUB19_SP3	CHTAER16ZC ■

VICTOR
MOD: VTURN-NP16CM

MODULO MOTORIZZATO RADIALE DISASSATO IN Z 36mm
Radial driven tool re-directed in Z by 36mm
Radial angetriebenes Werkzeug achsversetzt in Z um 36mm

Subject to change without notice.

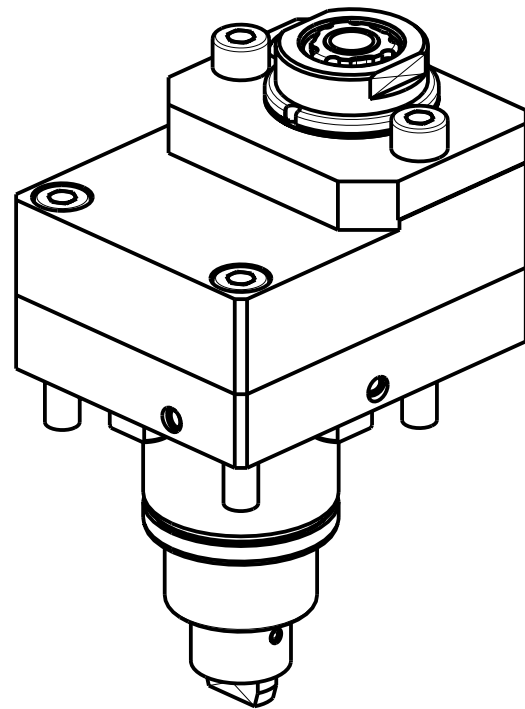
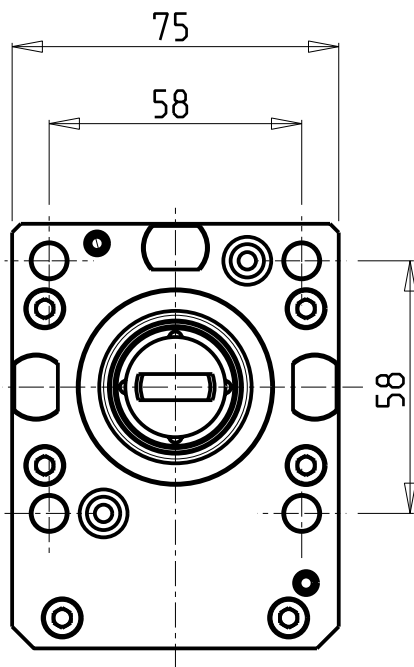
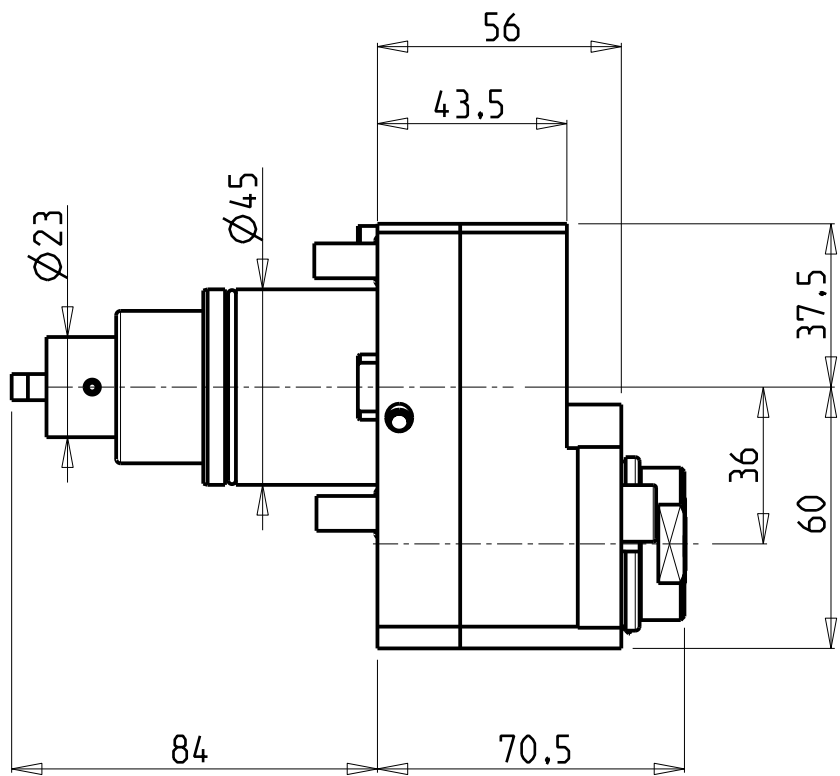


M.T. srl
Via Casino Albini 480
Tel. 0541/956034-957884
Fax 0541/956341
47842 S. GIOVANNI IN M. (RN)
e-mail: mtma@mtmarchetti.com
<http://www.mtmarchetti.com>

PRODUZIONE MODULI ROTANTI



PAGINA VCT030-5-10



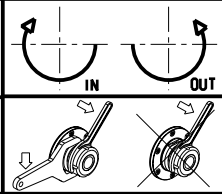
- Chiave inclusa
- Key included
- Schlüssel inbegriffen

Cod. MT	Mandrino Spindle Spindel	I	RPM	Coppia Max Max Torque Max Drehmoment	Reversibile lato mandrino/contromandrino Reversible sub/main spindle side Umkehrbare Spindel-seite/ Gegenspindel-seite	Lubrificazione int. Coolant through Innenkuehlung	Lubrificazione est. Ext. coolant Aussenkuehlung	CHIAVI NON INCLUSE Keys not included Schlüssel nicht einbegriffen		
DW 01891316	ERA16	1:2	12000	15Nm	X	-	X	CHUB30	CHUB19_SP3	CHTAER16ZC
DW 01891416	ERA16	1:2	12000	15Nm	X	P=70bar	X	CHUB30	CHUB19_SP3	CHTAER16ZC


VICTOR
MOD: VTURN-NP16CM

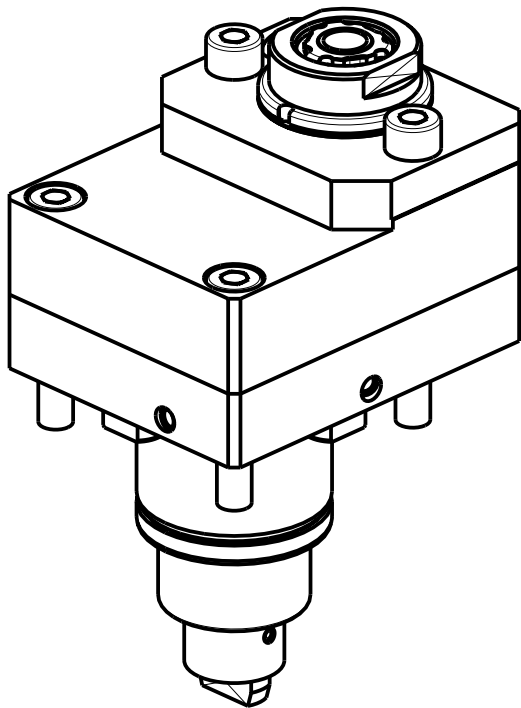
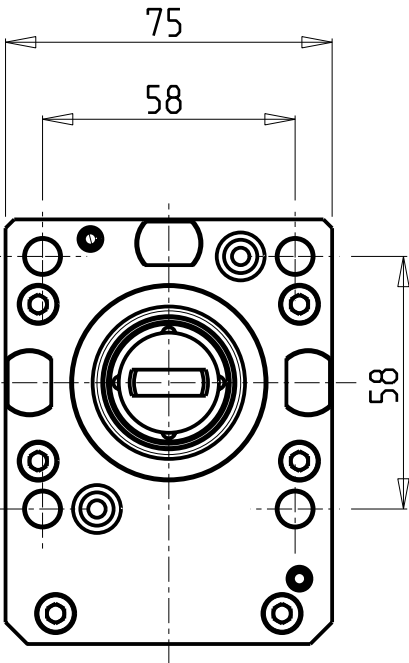
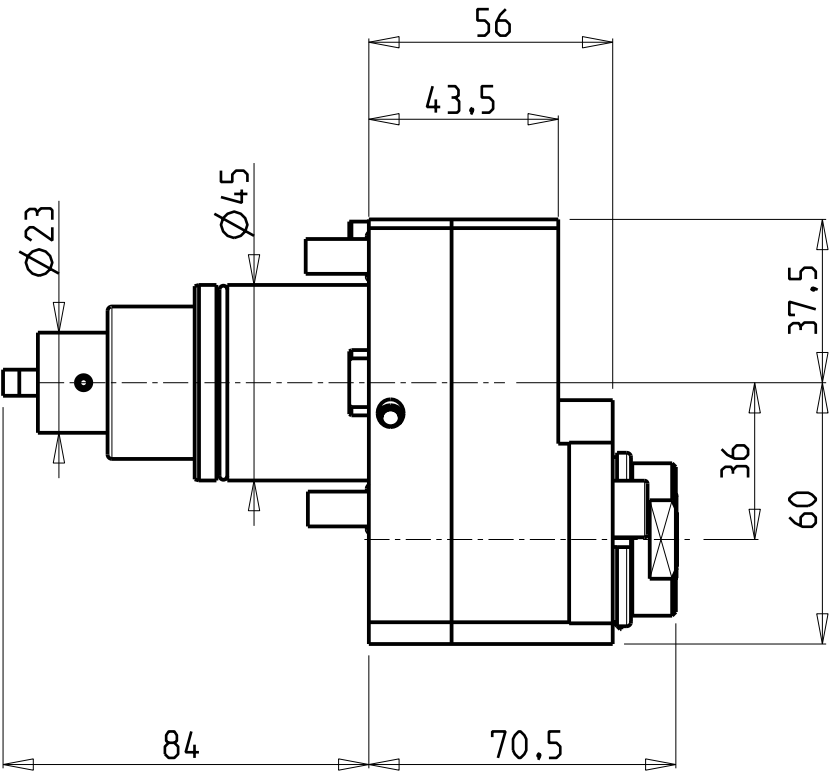
MODULO MOTORIZZATO RADIALE MOLTIPLICATO I=1:2 DISASSATO IN Z 36mm
Radial geared-up I=1:2 driven tool re-directed in Z by 36mm
Radial angetriebenes Werkzeug uebersetzt I=1:2 achsversetzt in Z um 36mm

Subject to change without notice.



M.T. srl
Via Casino Albini 480
Tel. 0541/956034-957884
Fax 0541/956341
47842 S. GIOVANNI IN M. (RN)
e-mail: mtma@mtmarchetti.com
<http://www.mtmarchetti.com>

PRODUZIONE MODULI ROTANTI

PAGINA VCT030-5-30



• Chiave inclusa

• Key included

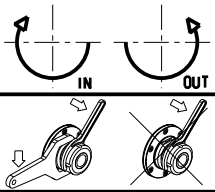
• Schlüssel inbegriffen

Cod. MT	Mandrino Spindle Spindel	I	RPM	Coppia Max Max Torque Max Drehmoment	Reversibile lato mandrino/contromandrino Reversible sub/main spindle side Umkehrbare Spindel-seite/ Gegenspindel-seite	Lubrificazione int. Coolant through Innenkuehlung	Lubrificazione est. Ext. coolant Aussenkuehlung	CHIAVI NON INCLUSE Keys not included Schlüssel nicht einbegriffen		
DW 01892316	ERA16	1:3	18000	10Nm	X	-	X	CHUB30	CHUB19_SP3	CHTAER16ZC ■
DW 01892416	ERA16	1:3	18000	10Nm	X	P=70bar	X	CHUB30	CHUB19_SP3	CHTAER16ZC ■

VICTOR
MOD: VTURN-NP16CM

MODULO MOTORIZZATO RADIALE MOLTIPLICATO I=1:3 DISASSATO IN Z 36mm
Radial geared-up I=1:3 driven tool re-directed in Z by 36mm
Radial angetriebenes Werkzeug uebersetzt I=1:3 achsversetzt in Z um 36mm

Subject to change without notice.

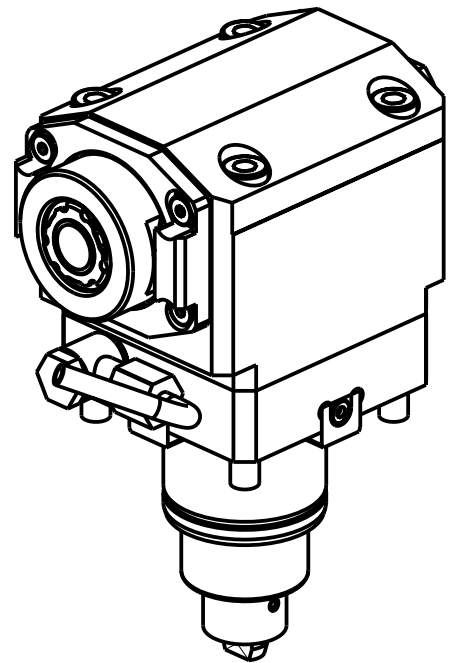
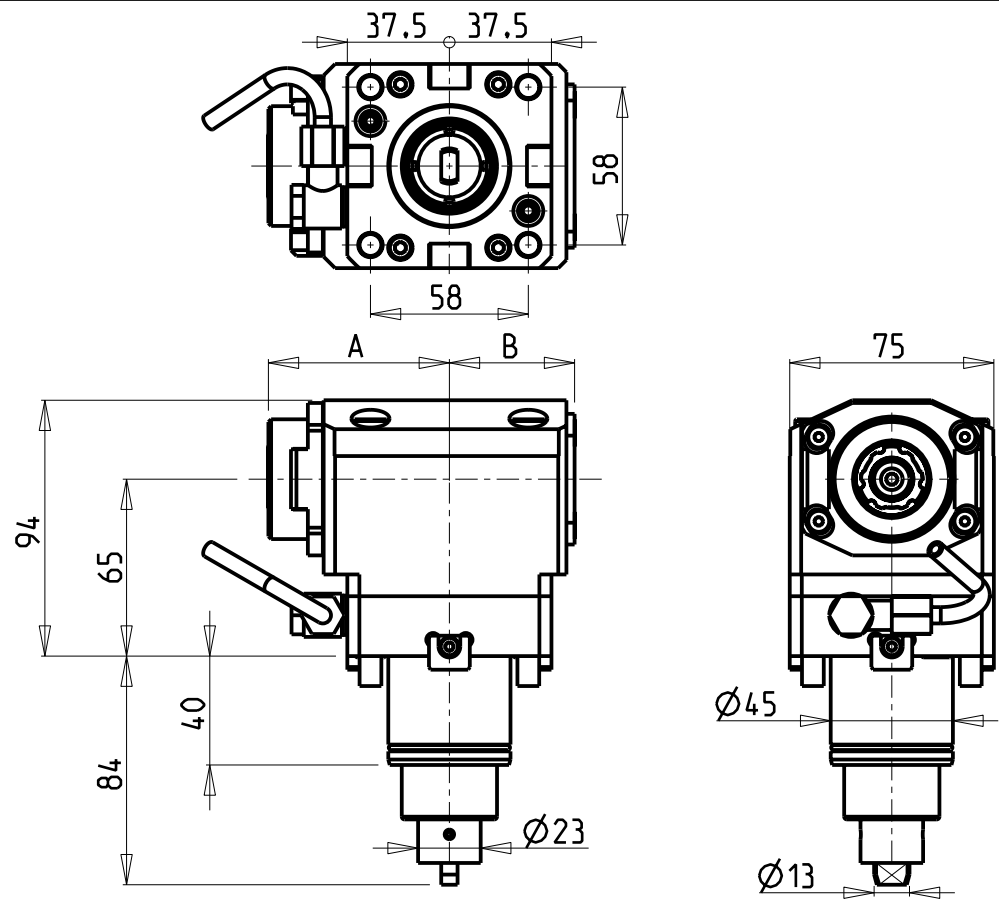


M.T. srl
Via Casino Albini 480
Tel. 0541/956034-957884
Fax 0541/956341
47842 S. GIOVANNI IN M. (RN)
e-mail: mtma@mtmarchetti.com
<http://www.mtmarchetti.com>

PRODUZIONE MODULI ROTANTI



PAGINA VCT030-5-50



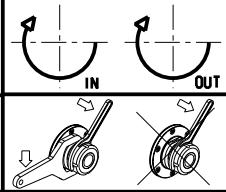
- Chiave inclusa
- Key included
- Schlüssel inbegriffen

Cod. MT	Mandrino Spindle Spindel	I	RPM	Coppia Max Max Torque Max Drehmoment	Reversibile lato mandrino/contromandrino Reversible sub/main spindle side Umkehrbare Spindel-seite/ Gegenspindel-seite	Lubrificazione int. Coolant through Innenkuehlung	Lubrificazione est. Ext. coolant Aussenkuehlung	A	B	CHIAVI NON INCLUDE Keys not included Schlüssel nicht inbegriffen		
DW 02290320	ERA20	1:1	6000	35Nm	X	-	X	66,5	46	CHUB22	CHTAER20ZC	OKU0290009
DW 02290420	ERA20	1:1	6000	35Nm	X	P=70bar	X	66,5	56	CHUB22	CHTAER20ZC	OKU0290009
DW 02290325	ERA25	1:1	6000	35Nm	X	-	X	70	46	CHUB27	CHTAER25ZC	OKU0290009
DW 02290425	ERA25	1:1	6000	35Nm	X	P=70bar	X	70	56	CHUB27	CHTAER25ZC	OKU0290009

VICTOR
MOD: VTURN-NP16CM


MODULO MOTORIZZATO ASSIALE
Axial driven tool
Axial angetriebenes Werkzeug

Subject to change without notice.

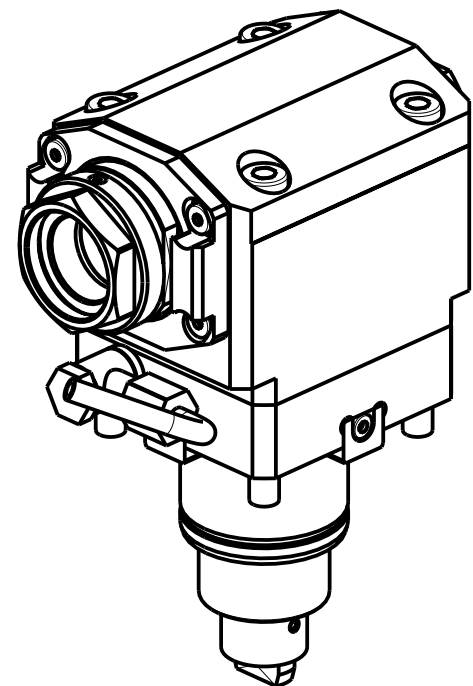
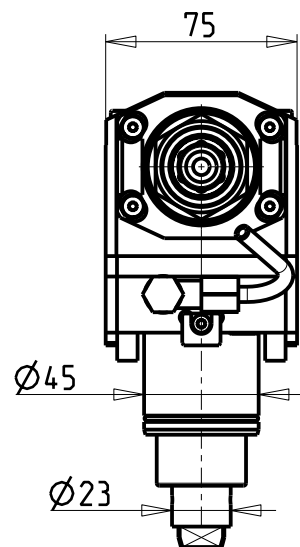
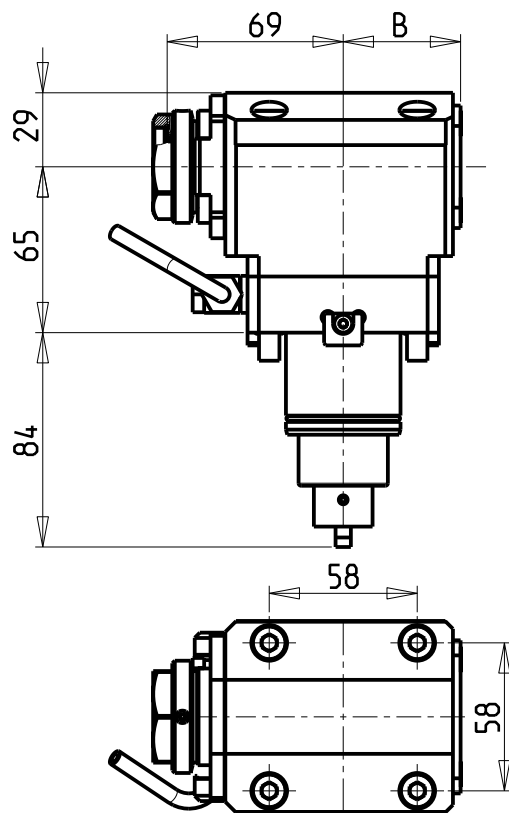


M.T. srl
Via Casino Albini 480
Tel. 0541/956034-957884
Fax 0541/956341
47842 S. GIOVANNI IN M. (RN)
e-mail: mtma@mtmarchetti.com
<http://www.mtmarchetti.com>

PRODUZIONE MODULI ROTANTI



PAGINA VCT150-5-00



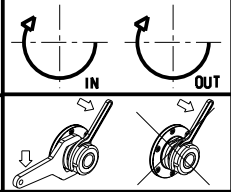
PER PORTAUTENSILI MODULARI MTSK-32 VEDI PAG. TBL300-1-32
FOR MTSK-32 QUIK CHANGE TOOLHOLDERS CLAMPINGS SEE PAGE TBL300-1-32
FUER MTSK-32 MODULARE WERKZEUGAUFNAHMEN SIEHE SEITE TBL300-1-32

Cod. MT	Mandrino Spindle Spindel	I	RPM	Coppia Max Max Torque Max Drehmoment	Reversibile lato mandrino/contromandrino Reversible sub/main spindle side Umkehrbare Spindel-seite/ Gegenspindel-seite	Lubr.interna Coolant through Innenkuehlung	Lubrificazione est. Ext. coolant Aussenkuehlung	B	CHIAVI NON INCLUSE Keys not included Schluessel nicht einbegriffen	
DW 01790132	MTSK-32	1:1	6000	35Nm	X	-	X	46	CHUB36	OKU0290009 ▪
DW 01790232	MTSK-32	1:1	6000	35Nm	X	P=70bar	X	56	CHUB36	OKU0290009 ▪

- Chiave inclusa
- Key included
- Schluessel inbegriffen

VICTOR
MOD: VTURN-NP16CM

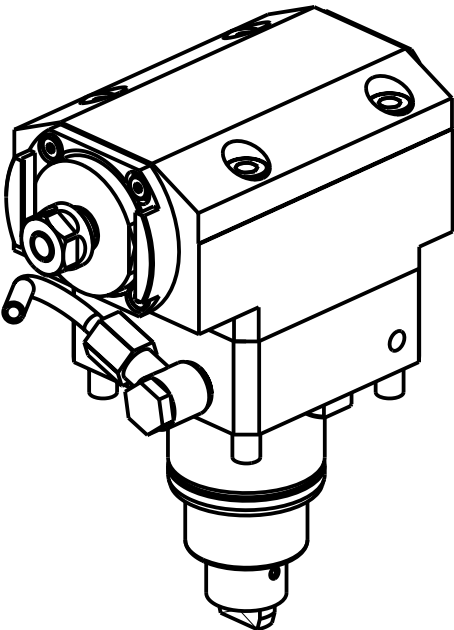
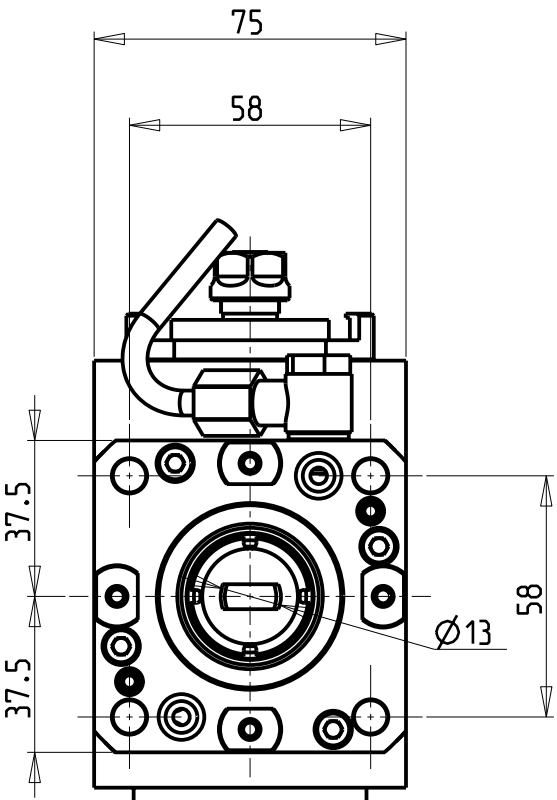
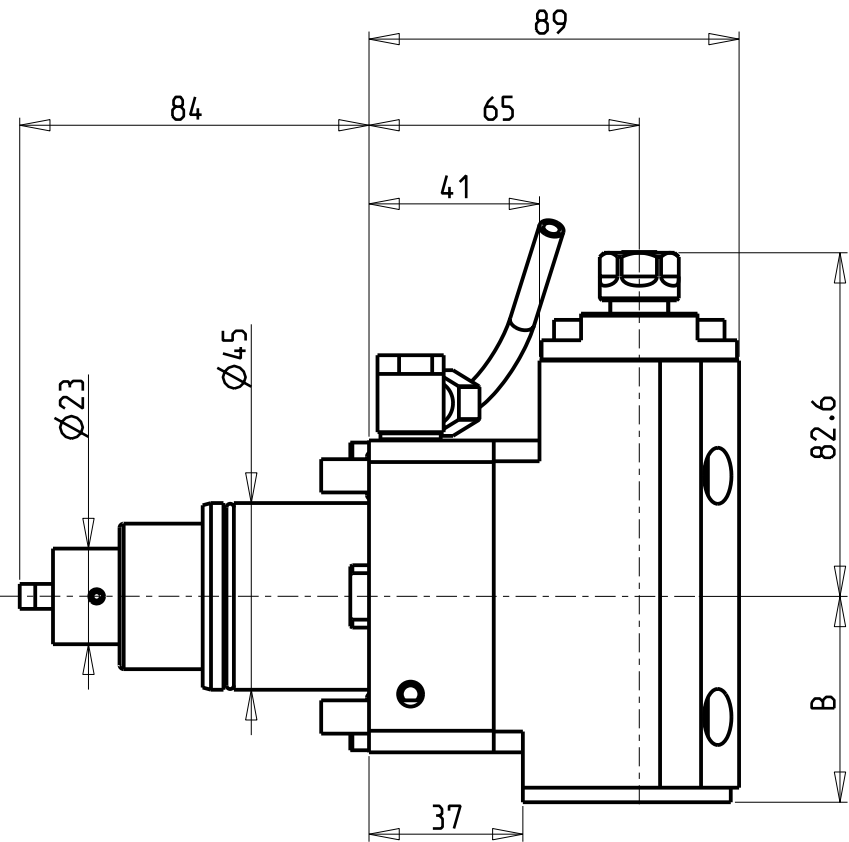
MODULO MOTORIZZATO ASSIALE MTSK
Axial MTSK driven tool
Axial MTSK angetriebenes Werkzeug



M.T. srl
Via Casino Albini 480
Tel. 0541/956034-957884
Fax 0541/956341
47842 S. GIOVANNI IN M. (RN)
e-mail: mtma@mtmarchetti.com
<http://www.mtmarchetti.com>

PRODUZIONE MODULI ROTANTI

PAGINA VCT150-5-00-K



Cod. MT	Mandrino Spindle Spindel	I	RPM	Coppia Max Max Torque Max Drehmoment	Reversibile lato mandrino/contromandrino Reversible sub/main spindle side Umkehrbare Spindel-seite/ Gegenspindel-seite	Lubrificazione int. Coolant through Innenkuehlung	Lubrificazione est. Ext. coolant Aussenkuehlung	B	CHIAVI NON INCLUSE Keys not included Schluessel nicht einbegriffen	
DW02320111	ER11	1:2	12000	20Nm	X	-	X	49.5	CHUB17	OKU0290009
DW02320211	ER11	1:2	12000	20Nm	X	P=70bar	X	57.5	CHUB17	OKU0290009

- Chiave inclusa
- Key included
- Schluessel inbegriffen

VICTOR
MOD: VTURN-NP16CM

MODULO MOTORIZZATO ASSIALE MOLTIPLICATO I=1:2 H=65mm
Axial geared-up I=1:2 driven tool H=65mm
Axial angetriebenes Werkzeug uebersetzt I=1:2 H=65mm

Diagram showing the tool holder and tool in two positions, labeled IN and OUT.

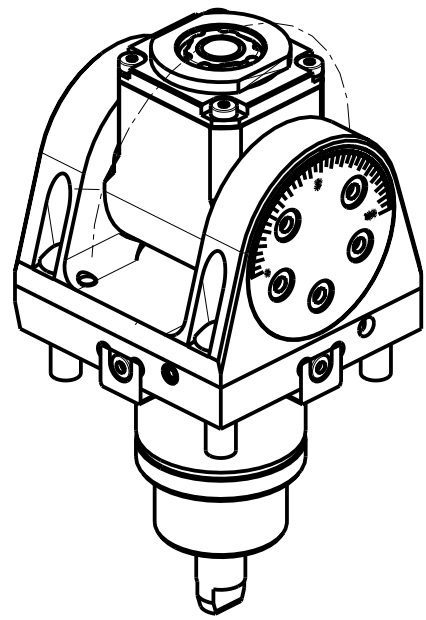
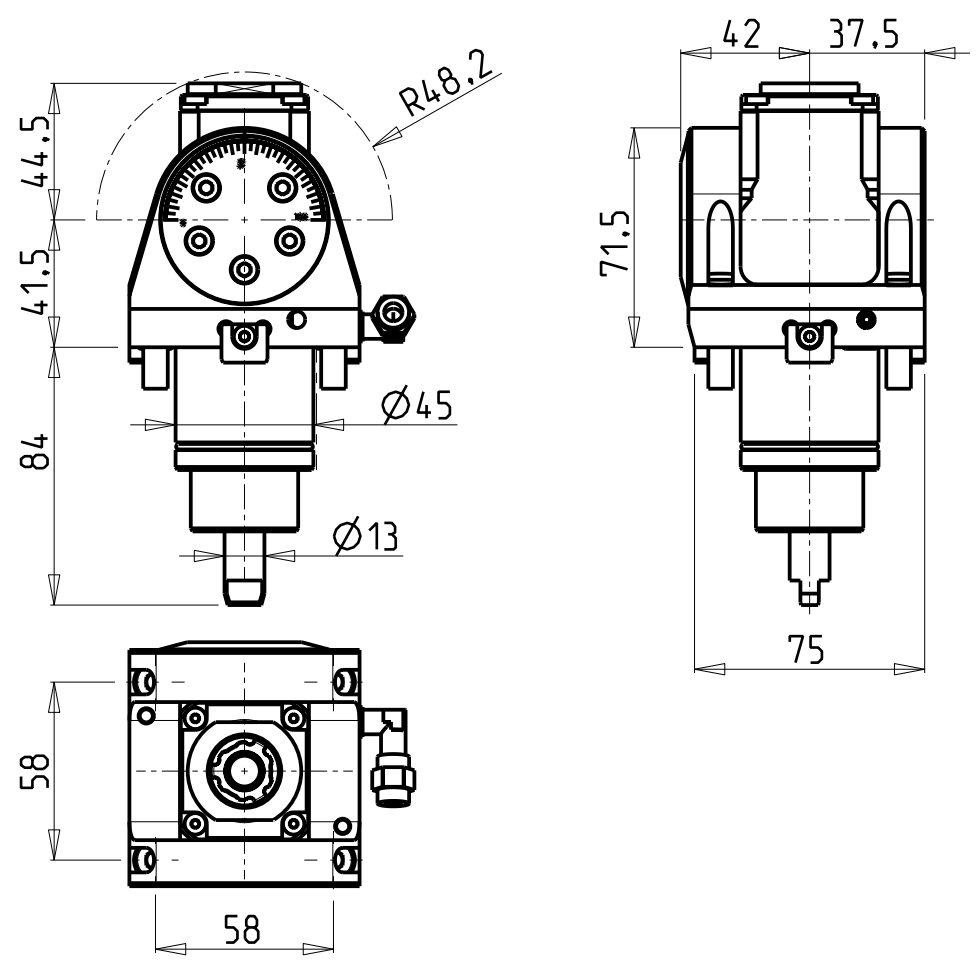
M.T. srl

Via Casino Albini 480
Tel. 0541/956034-957884
Fax 0541/956341
47842 S. GIOVANNI IN M. (RN)
e-mail: mtma@mtmarchetti.com
<http://www.mtmarchetti.com>

PRODUZIONE MODULI ROTANTI

MT

PAGINA VCT200-5-10




Cod. MT	Mandrino Spindle Spindel	I	RPM	Coppia Max Max Torque Max Drehmoment	Reversibile lato mandrino/contromandrino Reversible sub/main spindle side Umkehrbare Spindel-seite/ Gegenspindel-seite	Lubrificazione est. Ext. coolant Aussenkuehlung	CHIAVI INCLUSE Keys included Schluessel inbegriffen			
DW00040116	ER A 16	1:1	6000	20Nm	X	X	CHUB19_SP3	CHUB32	CHESL05	CHTAER16ZC

VICTOR
MOD: VTUR-NP16CM

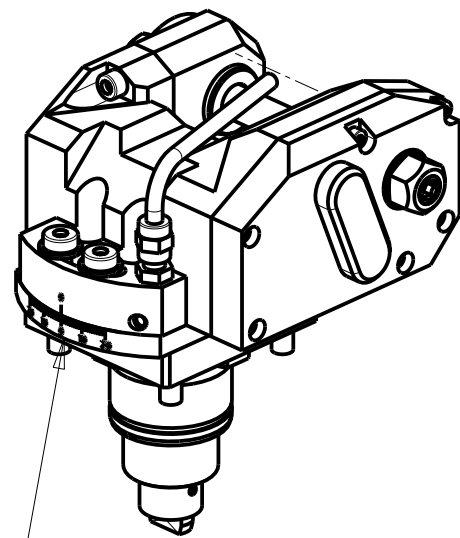
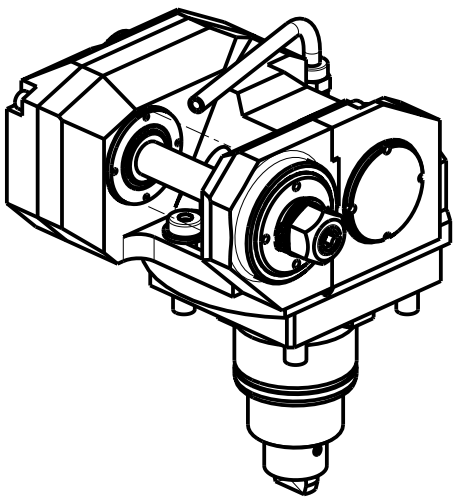
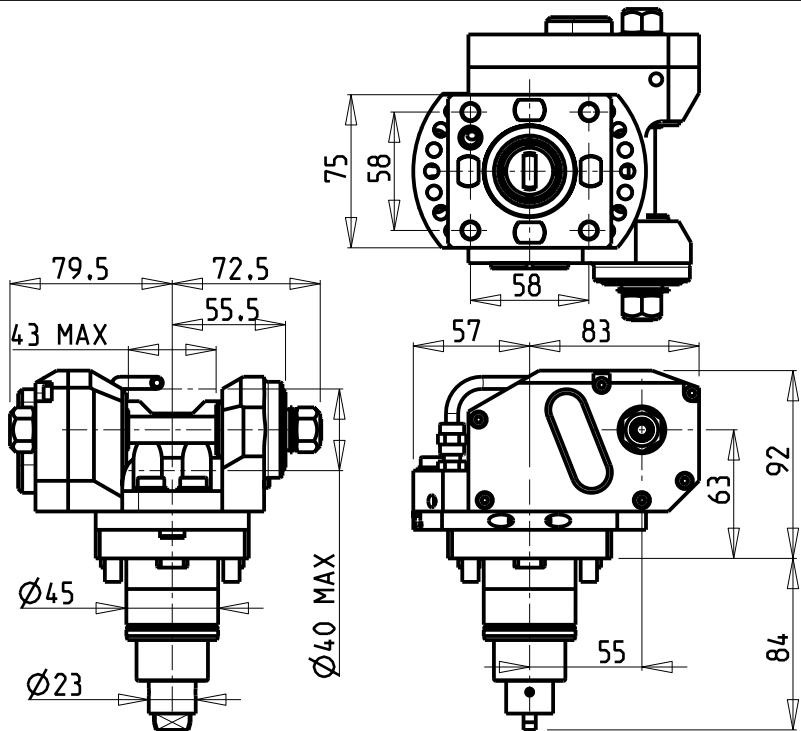
MODULO MOTORIZZATO ORIENTABILE ±90°
±90° adjustable angle driven tool
Angetriebenes Werkzeug schwenkbar ±90°

M.T. srl
Via Casino Albini 480
Tel. 0541/956034-957884
Fax 0541/956341
47842 S. GIOVANNI IN M. (RN)
e-mail: mtma@mtmarchetti.com
<http://www.mtmarchetti.com>

PRODUZIONE MODULI ROTANTI



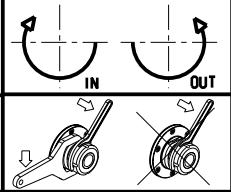
PAGINA VCT335-5-00



INCLINAZIONE
REGOLABILE $\pm 20^\circ$

Cod. MT	I	RPM max	Coppia Max Max Torque Max Drehmoment	Lubrificazione est. Ext. coolant Aussenkuehlung	D (mm)	CHIAVI INCLUSE Keys included Schluessel inbegriffen				
DW 01611116	1:1	6000	30Nm	X	16	CHUB19	CHESL06	CHESL05	-	-
DW 01611113	1:1	6000	30Nm	X	13	CHUB19	CHESL06	CHESL05	-	-
DW 01611110	1:1	6000	30Nm	X	10	CHUB19	CHESL06	CHESL05	-	CHUB17
DW 01611108	1:1	6000	30Nm	X	8	CHUB19	CHESL06	CHESL05	CHESL04	CHUB13
DW 01612116	2:1	3000	50Nm	X	16	CHUB19	CHESL06	CHESL05	-	-
DW 01612113	2:1	3000	50Nm	X	13	CHUB19	CHESL06	CHESL05	-	-
DW 01612110	2:1	3000	50Nm	X	10	CHUB19	CHESL06	CHESL05	-	CHUB17
DW 01612108	2:1	3000	50Nm	X	8	CHUB19	CHESL06	CHESL05	CHESL04	CHUB13

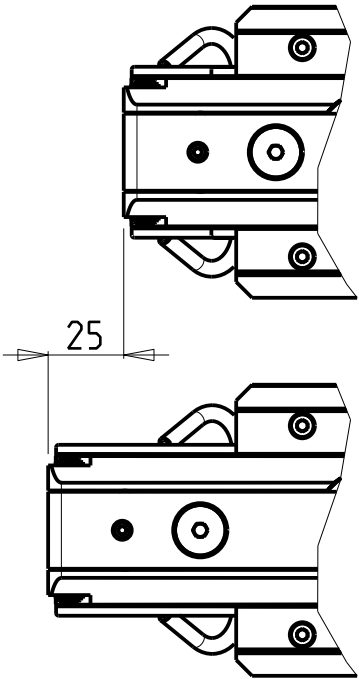
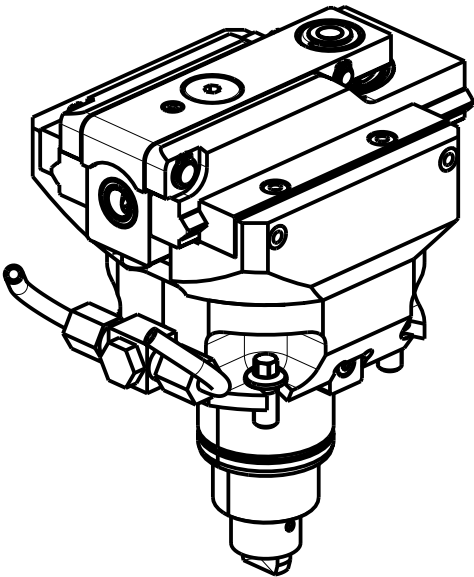
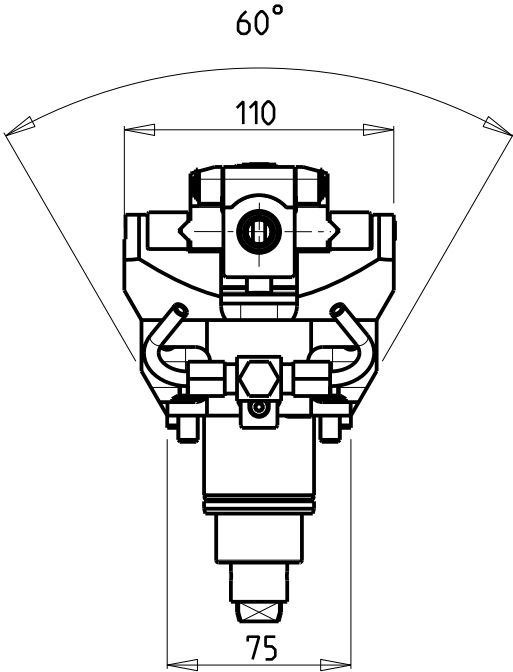
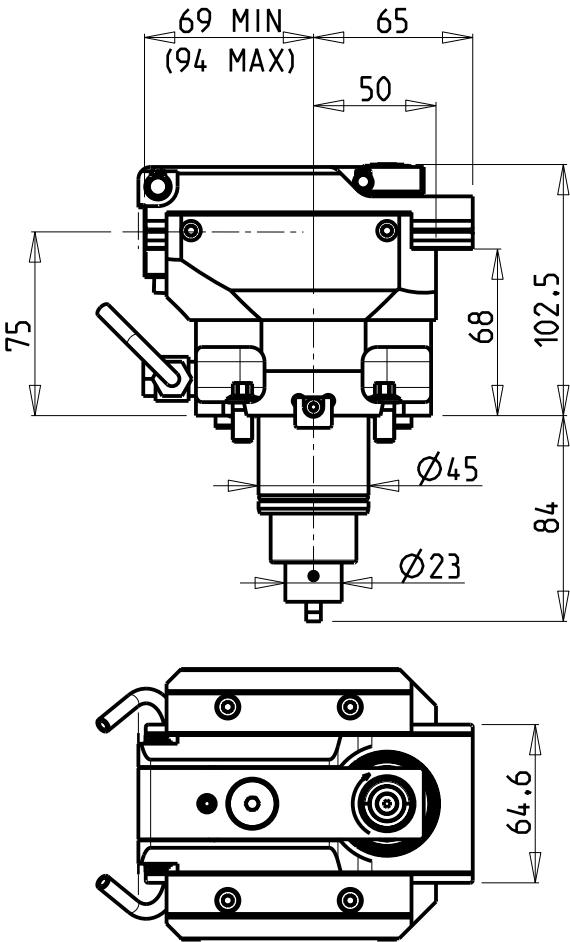
VICTOR
MOD: VTURN-NP16CM
MODULO MOTORIZZATO PORTACREATORE
Driven gear hobber
Angetriebenes Zahnradwaelzfraes-Werkzeug



M.T. srl
Via Casino Albini 480
Tel. 0541/956034-957884
Fax 0541/956341
47842 S. GIOVANNI IN M. (RN)
e-mail: mtma@mtmarchetti.com
<http://www.mtmarchetti.com>

PRODUZIONE MODULI ROTANTI

PAGINA VCT340-5-20



PER UTENSILI STOZZATORI VEDI PAG. TBL400-1-00
FOR DRIVEN SLOTTING TOOL CUTTING-TOOLS SEE PAGE TBL400-1-00
FÜR NUTENSTOSS-WERKZEUG SCHNEIDWERKZEUGE SIEHE SEITE TBL400-1-00

Cod. MT	I	RPM MAX	Reversibile lato mandrino/contromandrino Reversible sub/main spindle side Umkehrbare Spindel-seite/ Gegenspindel-seite	Lubr. esterna Ext. coolant Aussenkuehlung
DW01870200	4:1	2400	X	X

VICTOR
MOD: VTURN-NP16CM

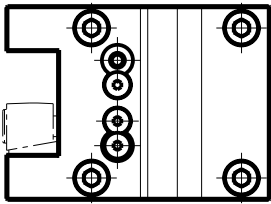
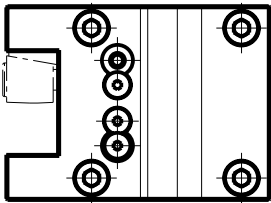
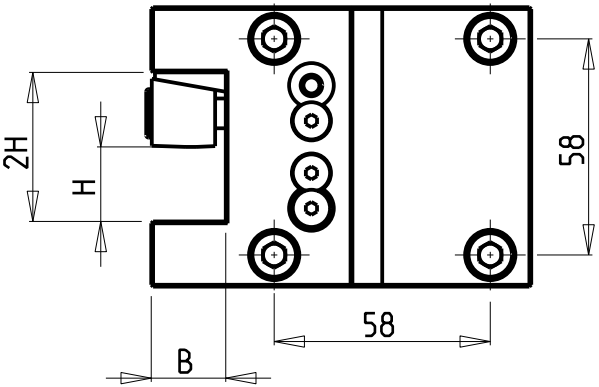
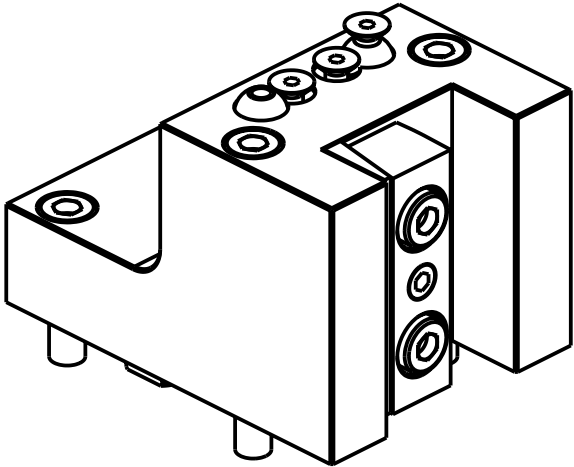
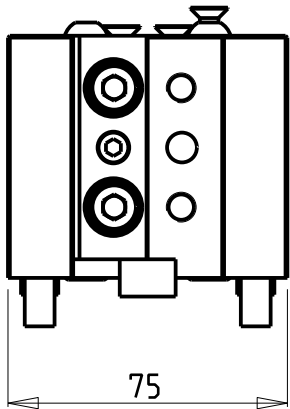
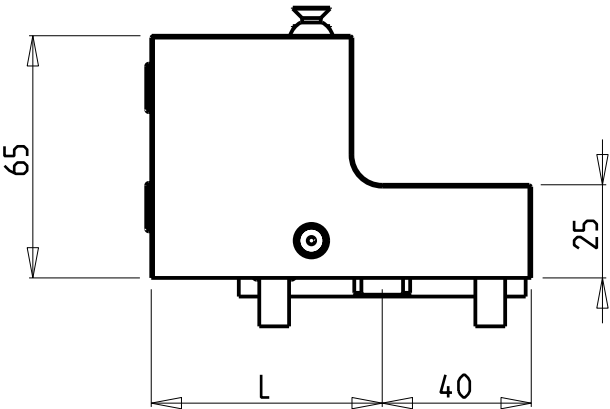
MODULO MOTORIZZATO STOZZATORE CORSA 25mm H=75mm
Slotting driven tool 25mm stroke H=75mm
Keilnutenstossmaschine 25mm Hub H=75mm

Subject to change without notice.

M.T. srl
Via Casino Albini 480
Tel. 0541/956034-957884
Fax 0541/956341
47842 S. GIOVANNI IN M. (RN)
e-mail: mtma@mtmarchetti.com
<http://www.mtmarchetti.com>

PRODUZIONE MODULI ROTANTI

PAGINA VCT360-5-02



Cod. MT	N°Utensili N°Tools N°Werkzeuge	Reversibile lato mandrino/contromandrino Reversible sub/main spindle side Umkehrbare Spindel-seite/ Gegenspindel-seite	Misure Dimensions Masse	L	B	H
DW 00312000	1/2	X	mm	62	20	20
DW 00312010	1/2	X	mm	85	20	20
DW 00311905	1/2	X	Inch	62	3/4"	3/4"

VICTOR
MOD: VTURN-NP16CM
PORTAUTENSILE RADIALE SINGOLO QD=20mm / QD=3/4"
Radial single static tool QD=20mm / QD=3/4"
Radial Single-Werkzeughalter QD=20mm / QD=3/4"

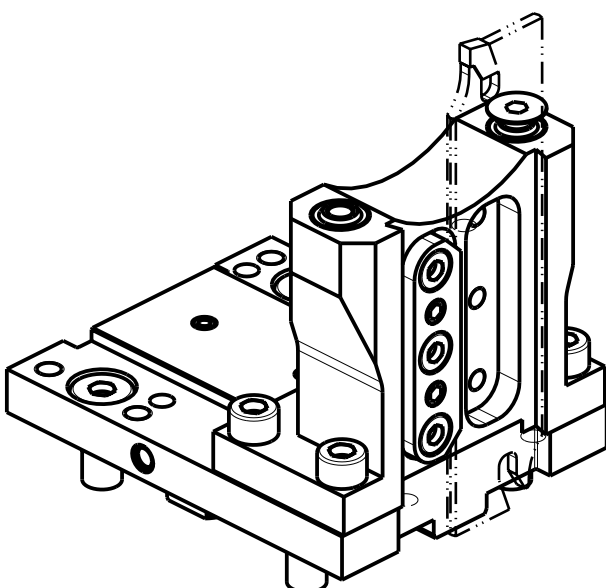
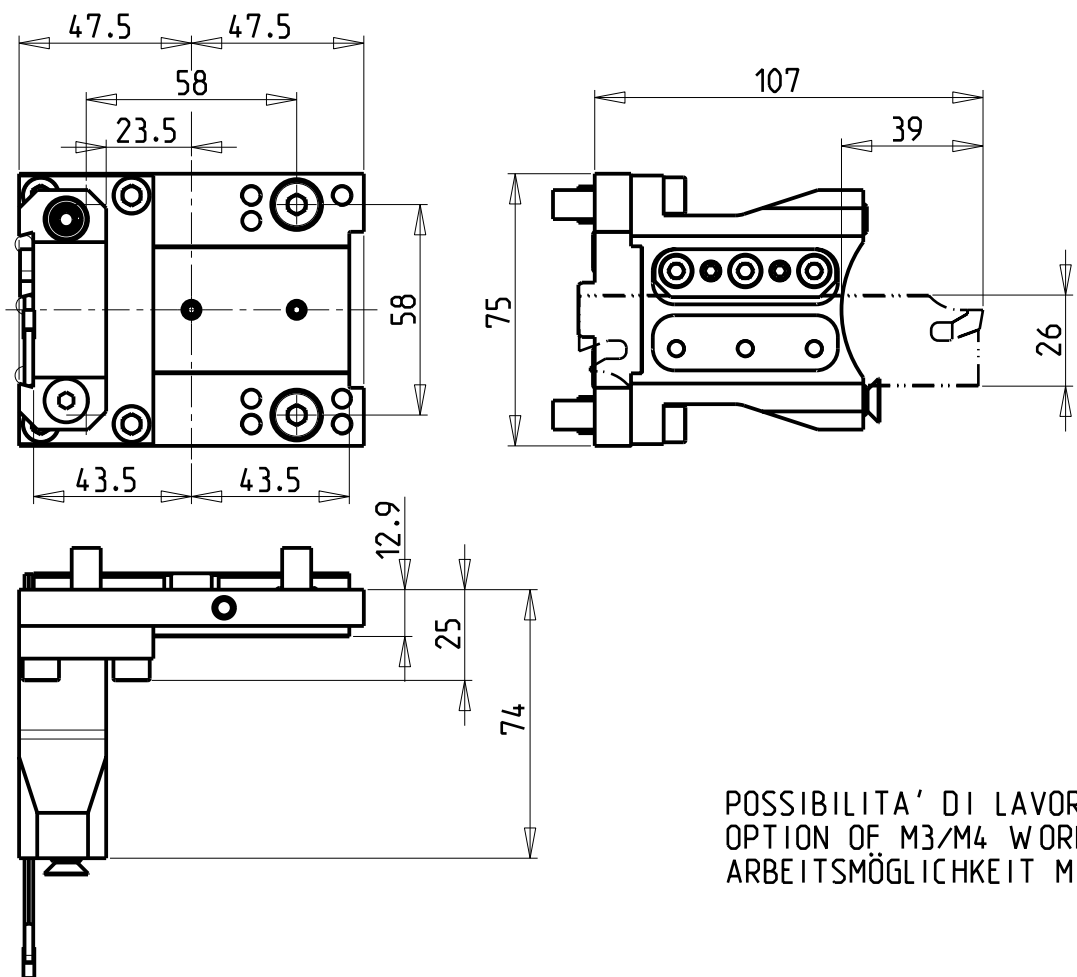
Subject to change without notice.

M.T. srl
Via Casino Albini 480
Tel. 0541/956034-957884
Fax 0541/956341
47842 S. GIOVANNI IN M. (RN)
e-mail: mtma@mtmarchetti.com
<http://www.mtmarchetti.com>

PRODUZIONE MODULI ROTANTI



PAGINA VCT420-5-00



POSSIBILITA' DI LAVORO M3/M4
OPTION OF M3/M4 WORKING
ARBEITSMÖGLICHKEIT M3/M4

DOTAZIONI - SUPPLIED WITH - AUSSTATTUNG


- N°1 - LAMA - BLADE - KLINGE KENNAMETAL H=26 Sp. 3/4mm
- N°10 - INSERTI - INSERTS - EINLAGEN
- N°1 - CHIAVE A T PER MONTAGGIO INSERTI
- T-WRENCH FOR INSERT SET UP
- T-SCHLUESSEL FUER EINSATZSTUECK-MONTAGE

Cod. MT	N°Utensili N°Tools N°Werkzeuge	Reversibile lato mandrino/contromandrino Reversible sub/main spindle side Umkehrbare Spindelseite/ Gegenspindelseite	Lubr.esterna Ext. coolant Aussenkuehlung
DW 01570126	1	X	X

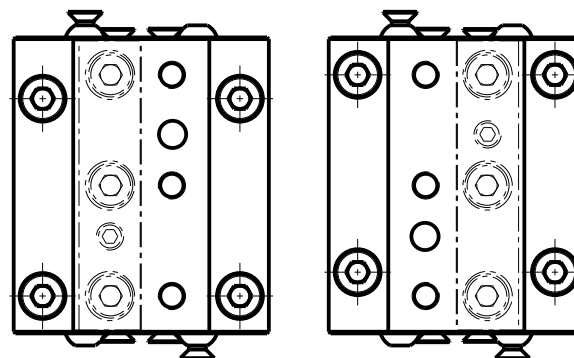
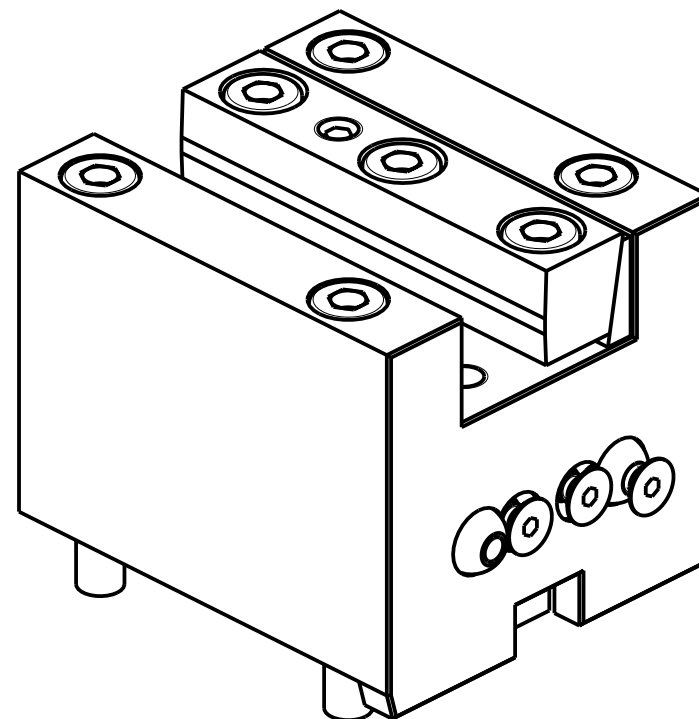
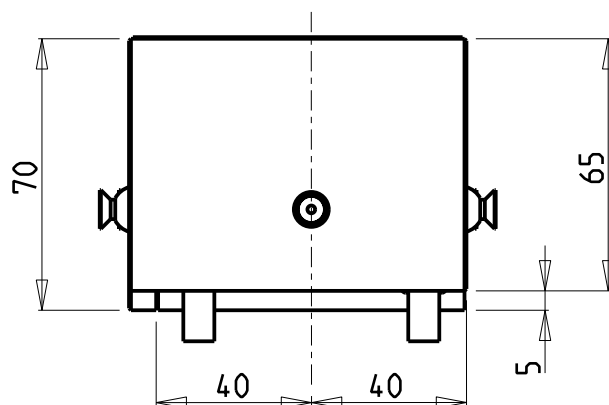
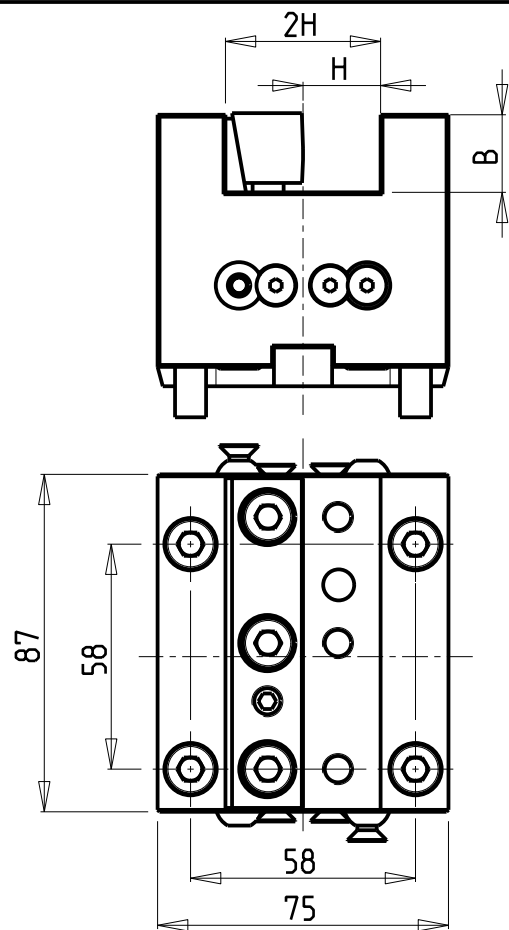
VICTOR
MOD: VTURN-NP16CM
PORTAUTENSILE RADIALE PER LAMA
Radial blade holder
Radial Abstechhalter

M.T. srl
Via Casino Albini 480
Tel. 0541/956034-957884
Fax 0541/956341
47842 S. GIOVANNI IN M. (RN)
e-mail: mtma@mtmarchetti.com
<http://www.mtmarchetti.com>

PRODUZIONE MODULI ROTANTI



PAGINA VCT520-5-10




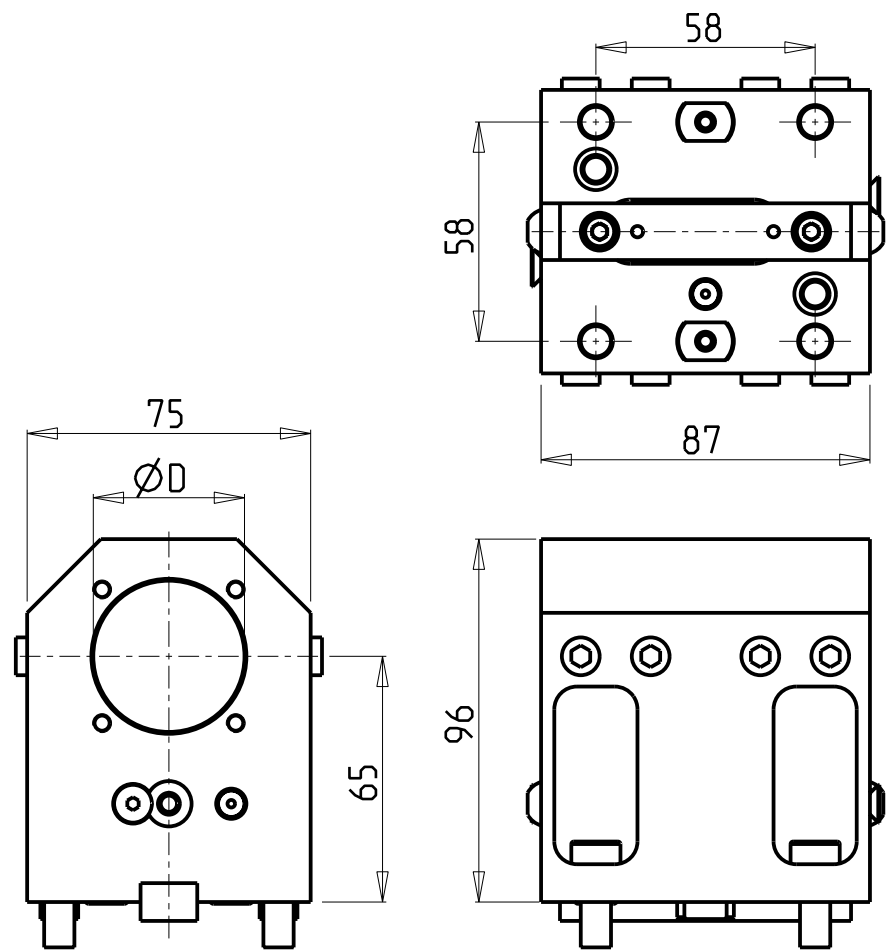
Cod. MT	N°Utensili N°Tools N°Werkzeuge	Misure Dimensions Masse	B	H
DW 00282000	1	mm	20	20
DW 00281905	1	Inch	3/4"	3/4"

VICTOR
MOD: VTURN-NP16CM
PORTAUTENSILE ASSIALE SINGOLO QD=20mm / QD=3/4"
Axial single static tool QD=20mm / QD=3/4"
Axial Single-Werkzeughalter QD=20mm / QD=3/4"

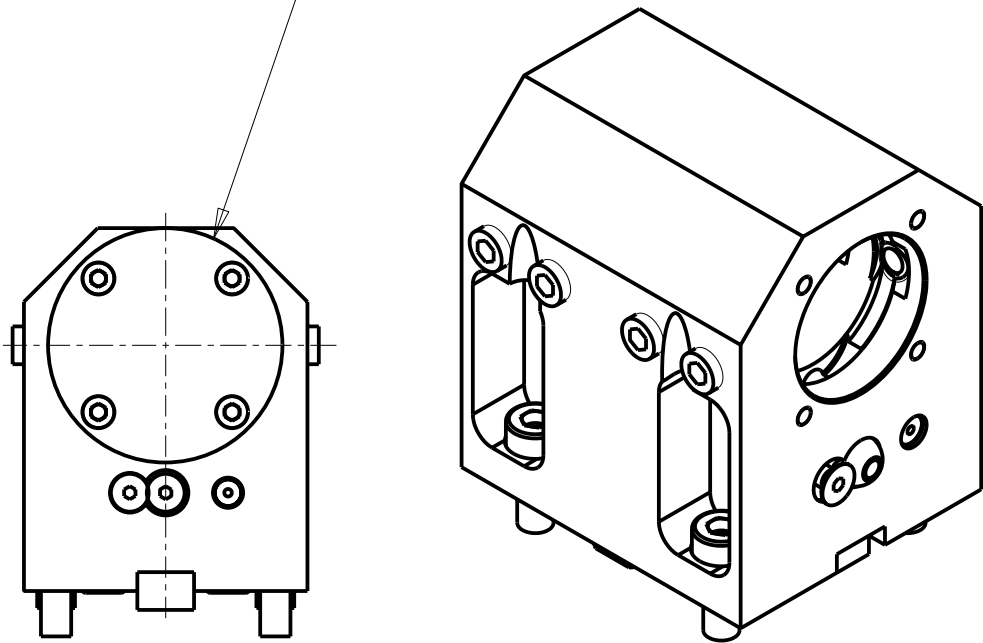
Subject to change without notice.

M.T. srl
Via Casino Albini 480
Tel. 0541/956034-957884
Fax 0541/956341
47842 S. GIOVANNI IN M. (RN)
e-mail: mtma@mtmarchetti.com
<http://www.mtmarchetti.com>

PRODUZIONE MODULI ROTANTI

PAGINA VCT550-5-00



KIT ADDUZIONE INTERNA (OPZIONALE)
KIT FOR INTERNAL COOLANT (OPTIONAL)
KIT FÜR INTERNE KUEHLMITTELZUFUHR (OPTIONAL)
Ø40 KIT1000003



Cod. MT	N°Utensili N°Tools N°Werkzeuge	Reversibile lato mandrino/contromandrino Reversible sub/main spindle side Umkehrbare Spindel-seite/ Gegenspindel-seite	Lubrificazione int. opzionale Coolant through optional Innenkuehlung Optional	Lubrificazione est. Ext. coolant Aussenkuehlung	Misure Dimensions Masse	D
DW02914000	1	X	X	X	mm	40

NEW

PER BOCCOLE DI RIDUZIONE VEDI PAG. TBL150-1-00
FOR REDUCING BUSHINGS SEE PAGE TBL150-1-00
FÜR REDUZIERBUCHSE SIEHE SEITE TBL150-1-00

VICTOR
MOD: VTURN-NP16CM

PORTAUTENSILE ASSIALE PER BARENO Ø40mm H=65mm
Axial single boring bar holder Ø40mm H=65mm
Axial Bohrhälter Ø40mm H=65mm

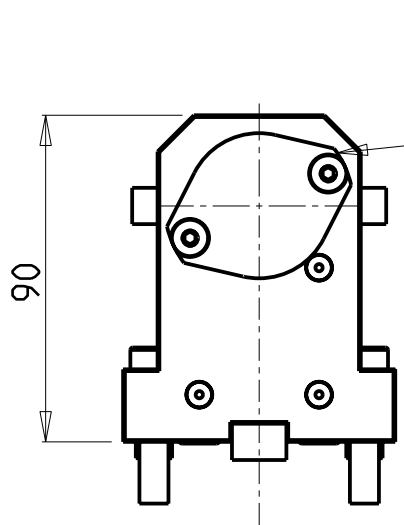
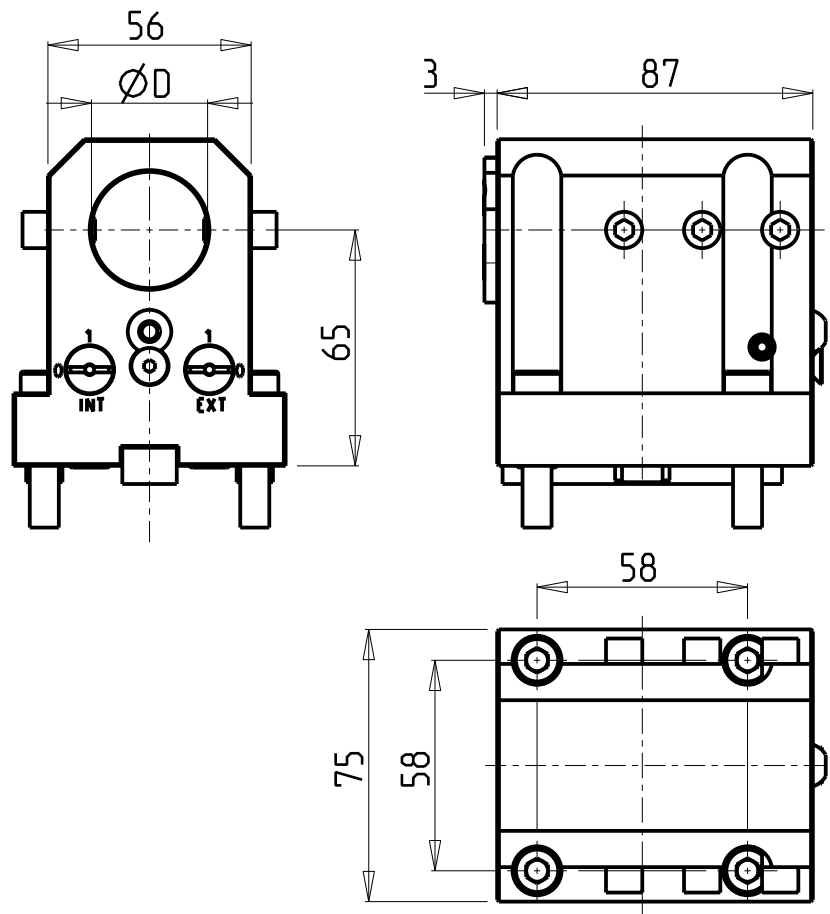
Subject to change without notice.

M.T. srl
Via Casino Albini 480
Tel. 0541/956034-957884
Fax 0541/956341
47842 S. GIOVANNI IN M. (RN)
e-mail: mtma@mtmarchetti.com
<http://www.mtmarchetti.com>

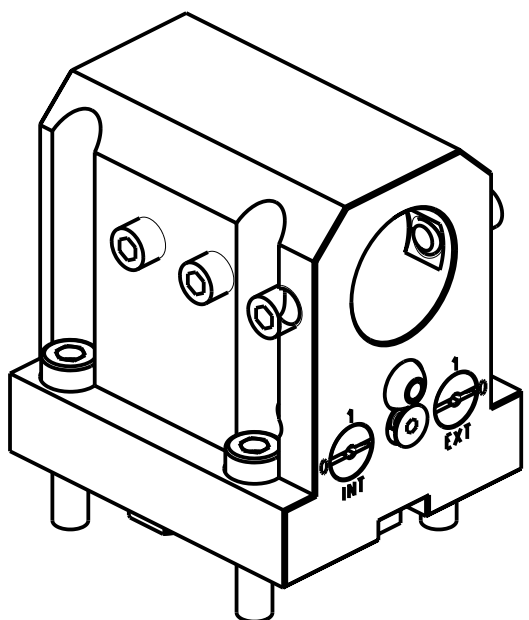
PRODUZIONE MODULI ROTANTI



PAGINA VCT630-5-10



KIT ADDUZIONE INTERNA (OPZIONALE)
KIT FOR INTERNAL COOLANT (OPTIONAL)
KIT FÜR INTERNE KUEHLMITTELZUFUHR (OPTIONAL)
Ø32-Ø1 1/4" KIT1000001




Cod. MT	N°Utensili N°Tools N°Werkzeuge	Reversibile lato mandrino/contromandrino Reversible sub/main spindle side Umkehrbare Spindel-seite/ Gegenspindel-seite	Lubrificazione int. opzionale Coolant through optional Innenkuehlung Optional	Lubrificazione est. Ext. coolant Aussenkuehlung	Misure Dimensions Masse	D
DW00293200	1	X	X	X	mm	32
DW00293175	1	X	X	X	Inch	1 1/4"

PER BOCCOLE DI RIDUZIONE VEDI PAG. TBL150-1-00
FOR REDUCING BUSHINGS SEE PAGE TBL150-1-00
FÜR REDUZIERBUCHSE SIEHE SEITE TBL150-1-00

VICTOR
MOD: VTURN-NP16CM
PORTAUTENSILE ASSIALE PER BARENO Ø32mm / Ø1 1/4" H=65mm
Axial single boring bar holder Ø32mm / Ø1 1/4" H=65mm
Axial Bohrhälter Ø32mm / Ø1 1/4" H=65mm
Subject to change without notice.

M.T. srl
Via Casino Albini 480
Tel. 0541/956034-957884
Fax 0541/956341
47842 S. GIOVANNI IN M. (RN)
e-mail: mtma@mtmarchetti.com
<http://www.mtmarchetti.com>

PRODUZIONE MODULI ROTANTI



PAGINA VCT650-5-10