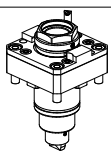
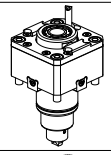
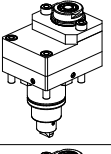
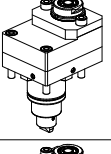
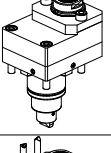
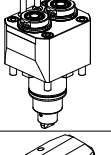
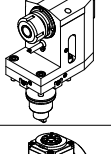
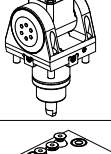
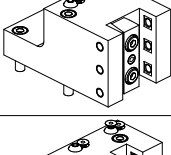
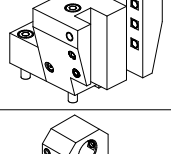
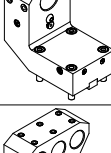
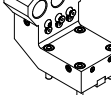
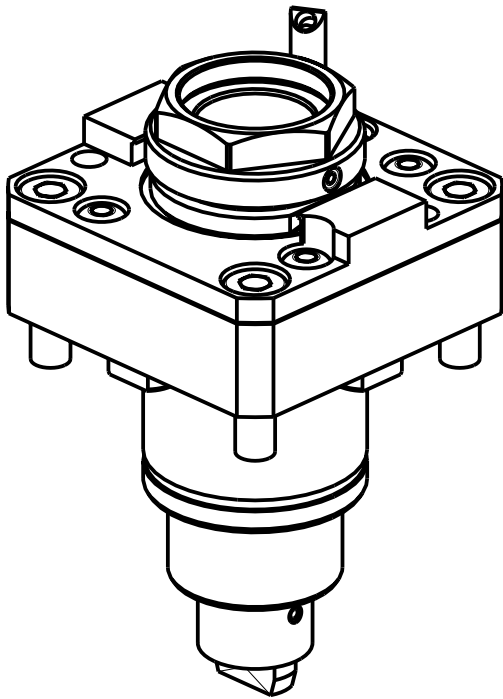
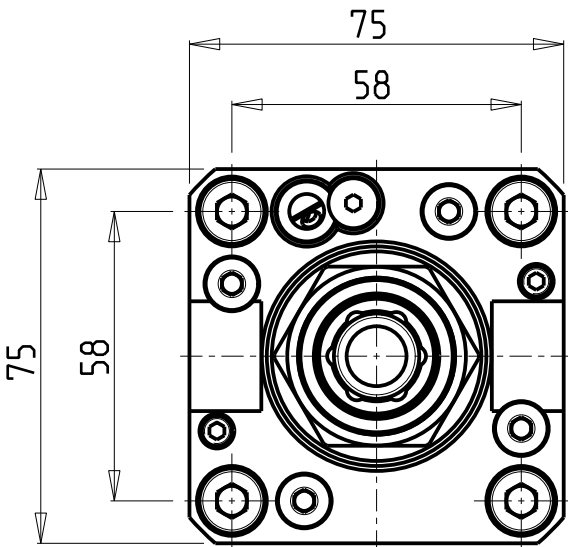
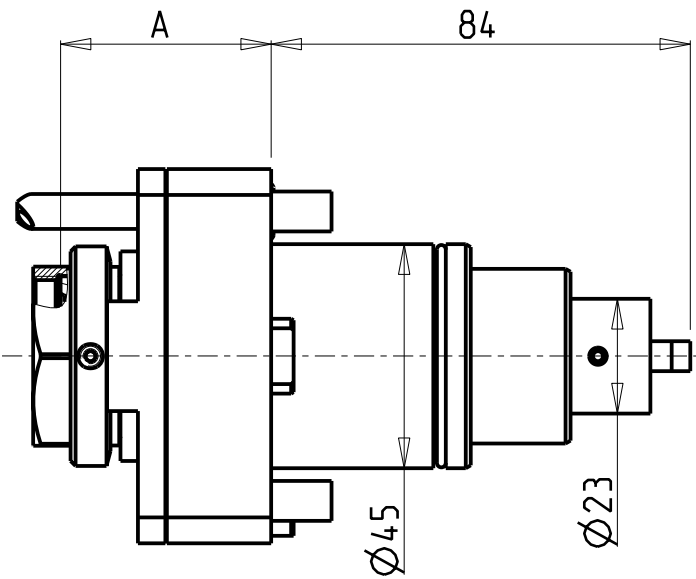


		PAGINA Page Seite
<b>MODULO MOTORIZZATO RADIALE MTSK</b> Radial MTSK driven tool Radial MTSK angetriebenes Werkzeug		NXT010.1.00.K
<b>MODULO MOTORIZZATO RADIALE</b> Radial driven tool Radial angetriebenes Werkzeug		NXT010.1.01
<b>MODULO MOTORIZZATO RADIALE DISASSATO IN Z 36mm</b> Radial driven tool re-directed in Z by 36mm Radial angetriebenes Werkzeug achsversetzt in Z um 36mm		NXT030.1.10
<b>MODULO MOTORIZZATO RADIALE MOLTIPLICATO 1=1:2 DISASSATO IN Z 36mm</b> Radial geared-up 1=1:2 driven tool re-directed in Z by 36mm Radial angetriebenes Werkzeug uebersetzt 1=1:2 achsversetzt in Z um 36mm		NXT030.1.30
<b>MODULO MOTORIZZATO RADIALE MOLTIPLICATO 1=1:3 DISASSATO IN Z 36mm</b> Radial geared-up 1=1:3 driven tool re-directed in Z by 36mm Radial angetriebenes Werkzeug uebersetzt 1=1:3 achsversetzt in Z um 36mm		NXT030.1.50
<b>MODULO MOTORIZZATO RADIALE 2 USCITE IN Y</b> Radial single side twin head driven tool in Y Radial angetriebenes Werkzeug 2 Ausgaenge in Y		NXT080.1.00
<b>MODULO MOTORIZZATO ASSIALE ARRETRATO</b> Axial rear-set driven tool Axial angetriebenes Werkzeug zurueckversetzt		NXT180.1.10
<b>MODULO MOTORIZZATO ORIENTABILE ±90°</b> ±90° adjustable angle driven tool Angetriebenes Werkzeug schwenkbar ±90°		NXT335.1.00
<b>PORTAUTENSILE RADIALE SINGOLO QD=20mm</b> Radial single static tool QD=20mm Radial Single-Werkzeughalter QD=20mm		NXT420.1.00
<b>PORTAUTENSILE RADIALE SOVRAPPOSTO QD=20mm / QD=3/4"</b> Radial single side twin static tool QD=20mm / QD=3/4" Radial Werkzeughalter ueberlagert QD=20mm / QD=3/4"		NXT440.1.00
<b>PORTAUTENSILE ASSIALE ARRETRATO PER BARENO Ø32mm / Ø1 1/4"</b> Axial single rear set boring bar holder Ø32mm / Ø1 1/4" Axial Bohrhalter zurueckversetzt Ø32mm / Ø1 1/4"		NXT845.1.10
<b>PORTAUTENSILE ASSIALE ARRETRATO PER BARENO 3 POSIZIONI Ø25mm / Ø1"</b> Axial 3 position rear set boring bar holder Ø25mm / Ø1" Axial Bohrhalter 3 Positionen zurueckversetzt Ø25mm / Ø1"		NXT904.1.00

Distributeur/ importateur : Crylax 0033 450 960920 - [info@crylax.com](mailto:info@crylax.com)



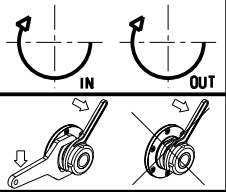
PER PORTAUTENSILI MODULARI MTSK-32 VEDI PAG. TBL300-1-32  
FOR MTSK-32 QUIK CHANGE TOOLHOLDERS CLAMPINGS SEE PAGE TBL300-1-32  
FUER MTSK-32 MODULARE WERKZEUGAUFNAHMEN SIEHE SEITE TBL300-1-32

Cod. MT	Mandrino Spindle Spindel	I	RPM	Coppia Max Max Torque Max Drehmoment	Lubr.interna Coolant through Innenkuehlung	Lubrificazione est. Ext. coolant Aussenkuehlung	A	CHIAVI NON INCLUSE Keys not included Schluessel nicht einbegriffen	
DW 01780132	MTSK-32	1:1	6000	35Nm	-	X	42.2	CHUB36	OKU0290009 *
DW 01780232	MTSK-32	1:1	6000	35Nm	P=30bar	X	49.7	CHUB36	OKU0290009 *

- Chiave inclusa
- Key included
- Schluessel inbegriffen

NEXTURN  
NST 56/67 (BMT45 DUPLOMATIC)

MODULO MOTORIZZATO RADIALE MTSK  
Radial MTSK driven tool  
Radial MTSK angetriebenes Werkzeug

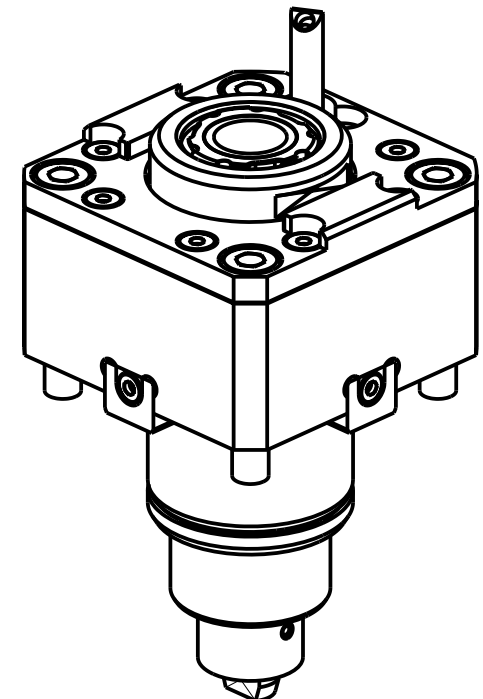
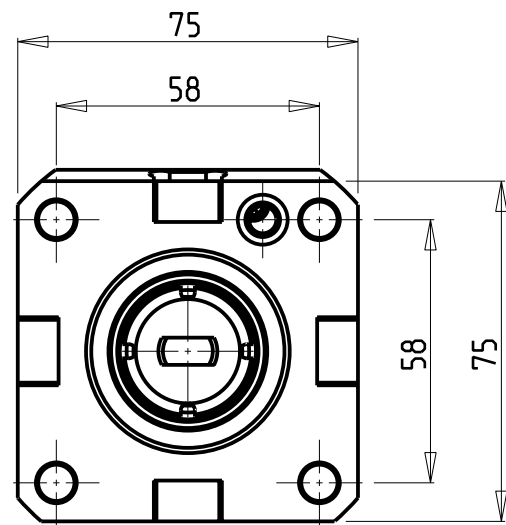
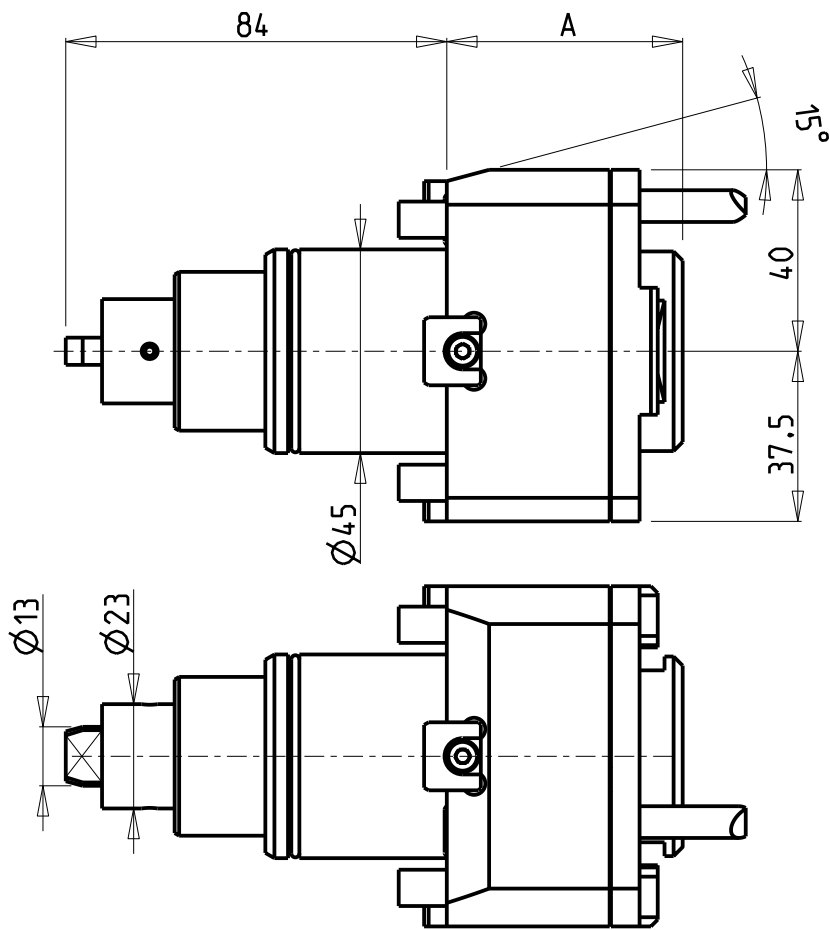


**M.T. srl**  
Via Casino Albini 480  
Tel. 0541/956034-957884  
Fax 0541/956341  
47842 S. GIOVANNI IN M. (RN)  
e-mail: [mtma@mtmarchetti.com](mailto:mtma@mtmarchetti.com)  
<http://www.mtmarchetti.com>

PRODUZIONE MODULI ROTANTI



PAGINA NXT010-1-00-K



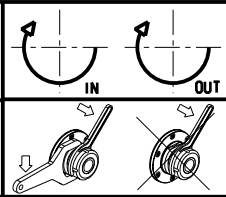
Cod. MT	Mandrino Spindle Spindel	I	RPM	Coppia Max Max Torque Max Drehmoment	Lubrificazione int. Coolant through Innenkuehlung	Lubrificazione est. Ext. coolant Aussenkuehlung	A	CHIAVI NON INCLUSE Keys not included Schlüssel nicht inbegriffen		
DW 02000325	ERA25	1:1	6000	35Nm	-	X	52	CHUB27	CHTAER25ZC	OKU0290009
DW 02000425	ERA25	1:1	6000	35Nm	P=30bar	X	60	CHUB27	CHTAER25ZC	OKU0290009

- Chiave inclusa
- Key included
- Schlüssel inbegriffen

NEXTURN  
NST 56/67 (BMT45 DUPLOMATIC)


MODULO MOTORIZZATO RADIALE  
Radial driven tool  
Radial angetriebenes Werkzeug

Subject to change without notice.

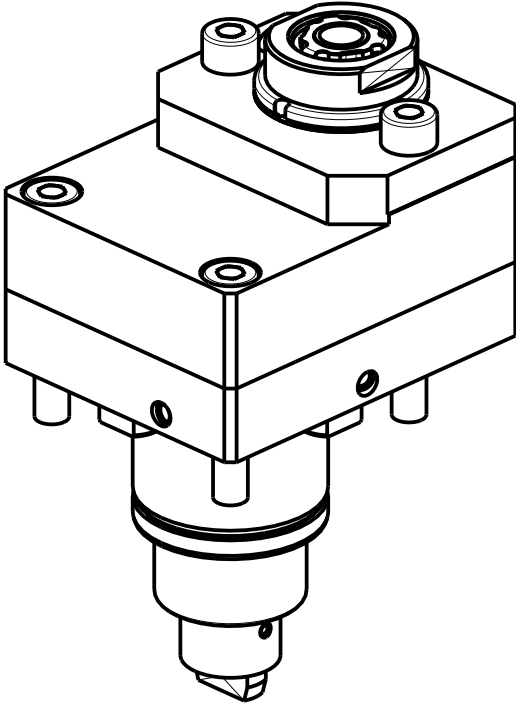
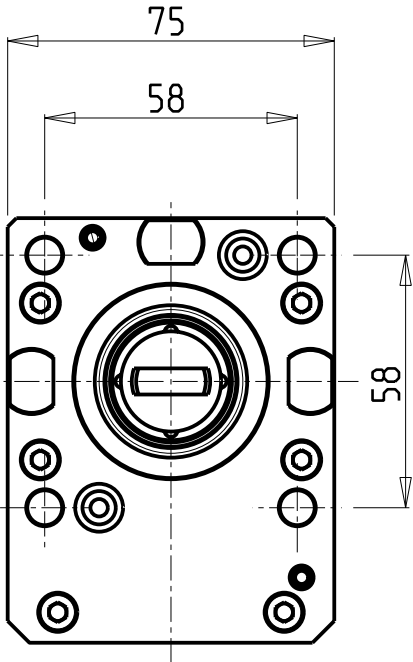
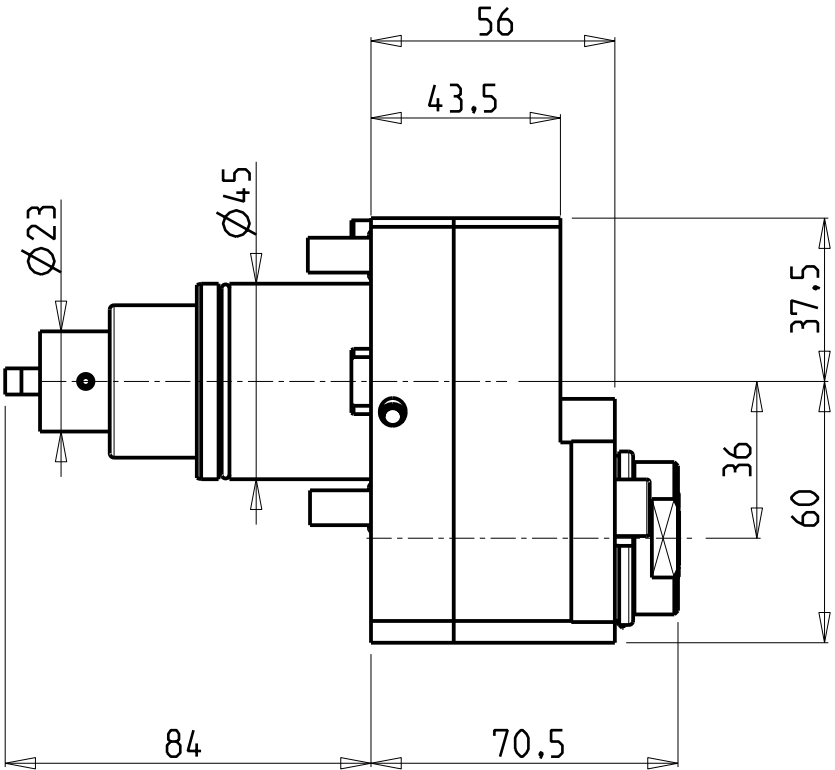


**M.T. srl**  
Via Casino Albini 480  
Tel. 0541/956034-957884  
Fax 0541/956341  
47842 S. GIOVANNI IN M. (RN)  
e-mail: [mtma@mtmarchetti.com](mailto:mtma@mtmarchetti.com)  
<http://www.mtmarchetti.com>

PRODUZIONE MODULI ROTANTI



PAGINA NXT010-1-01



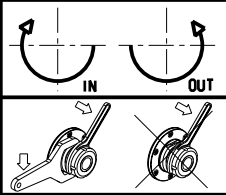
- Chiave inclusa
- Key included
- Schluessel inbegriffen

Cod. MT	Mandrino Spindle Spindel	I	RPM	Coppia Max Max Torque Max Drehmoment	Reversibile lato mandrino/contromandrino Reversible sub/main spindle side Umkehrbare Spindel-seite/ Gegenspindel-seite	Lubrificazione int. Coolant through Innenkuehlung	Lubrificazione est. Ext. coolant Aussenkuehlung	CHIAVI NON INCLUSE Keys not included Schluessel nicht einbegriffen		
DW 01890316	ERA16	1:1	6000	25Nm	X	-	X	CHUB30	CHUB19_SP3	CHTAER16ZC ■
DW 01890416	ERA16	1:1	6000	25Nm	X	P=70bar	X	CHUB30	CHUB19_SP3	CHTAER16ZC ■

NEXTURN  
NST 56/67 (BMT45 DUPLOMATIC)

MODULO MOTORIZZATO RADIALE DISASSATO IN Z 36mm  
Radial driven tool re-directed in Z by 36mm  
Radial angetriebenes Werkzeug achsversetzt in Z um 36mm

Subject to change without notice.

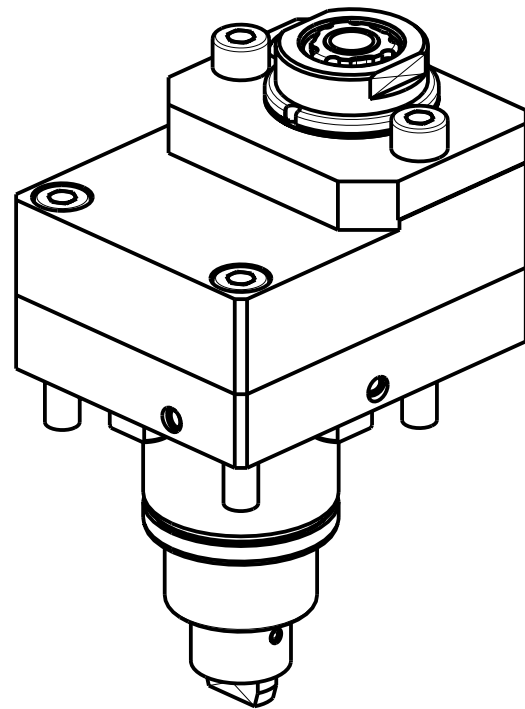
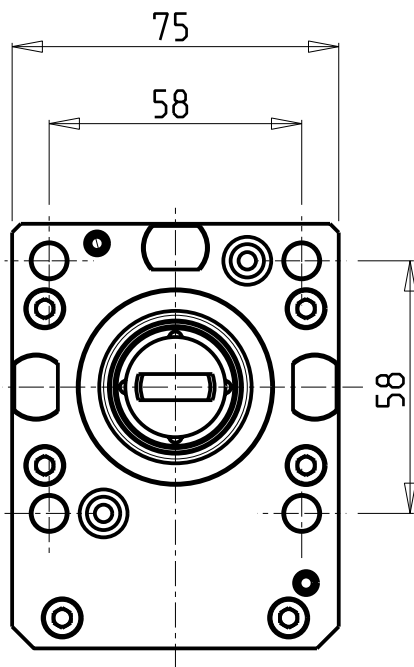
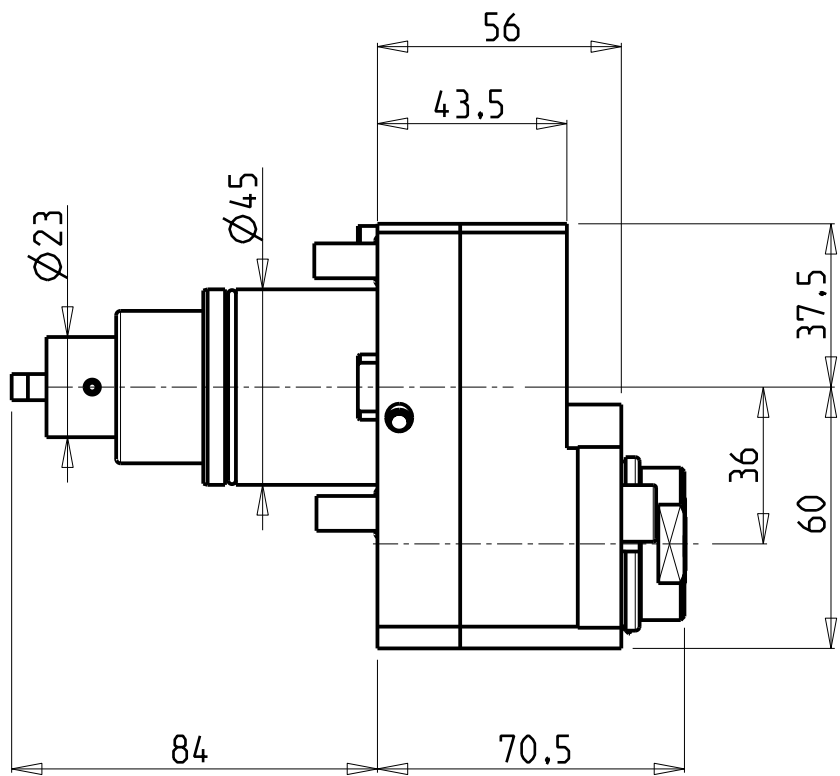


**M.T. srl**  
Via Casino Albini 480  
Tel. 0541/956034-957884  
Fax 0541/956341  
47842 S. GIOVANNI IN M. (RN)  
e-mail: [mtma@mtmarchetti.com](mailto:mtma@mtmarchetti.com)  
<http://www.mtmarchetti.com>

PRODUZIONE MODULI ROTANTI



PAGINA NXT030-1-10



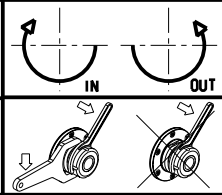
- Chiave inclusa
- Key included
- Schlüssel inbegriffen

Cod. MT	Mandrino Spindle Spindel	I	RPM	Coppia Max Max Torque Max Drehmoment	Reversibile lato mandrino/contromandrino Reversible sub/main spindle side Umkehrbare Spindel-seite/ Gegenspindel-seite	Lubrificazione int. Coolant through Innenkuehlung	Lubrificazione est. Ext. coolant Aussenkuehlung	CHIAVI NON INCLUSE Keys not included Schlüssel nicht einbegriffen		
DW 01891316	ERA16	1:2	12000	15Nm	X	-	X	CHUB30	CHUB19_SP3	CHTAER16ZC ▪
DW 01891416	ERA16	1:2	12000	15Nm	X	P=70bar	X	CHUB30	CHUB19_SP3	CHTAER16ZC ▪

NEXTURN  
NST 56/67 (BMT45 DUPLOMATIC)

MODULO MOTORIZZATO RADIALE MOLTIPLICATO I=1:2 DISASSATO IN Z 36mm  
Radial geared-up I=1:2 driven tool re-directed in Z by 36mm  
Radial angetriebenes Werkzeug uebersetzt I=1:2 achsversetzt in Z um 36mm

Subject to change without notice.

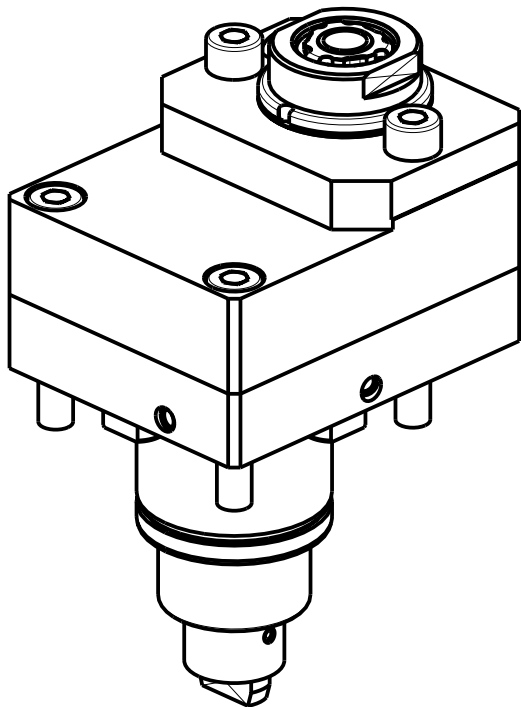
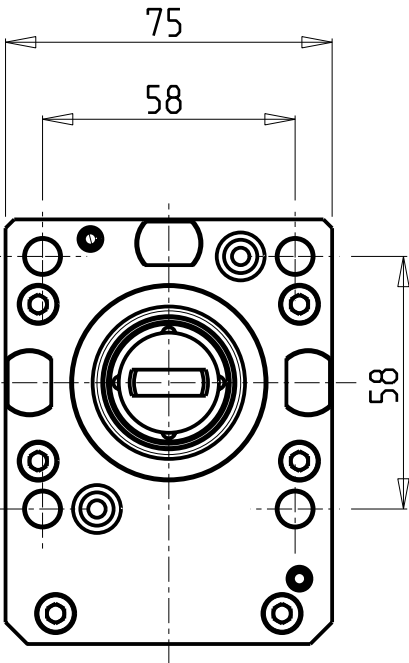
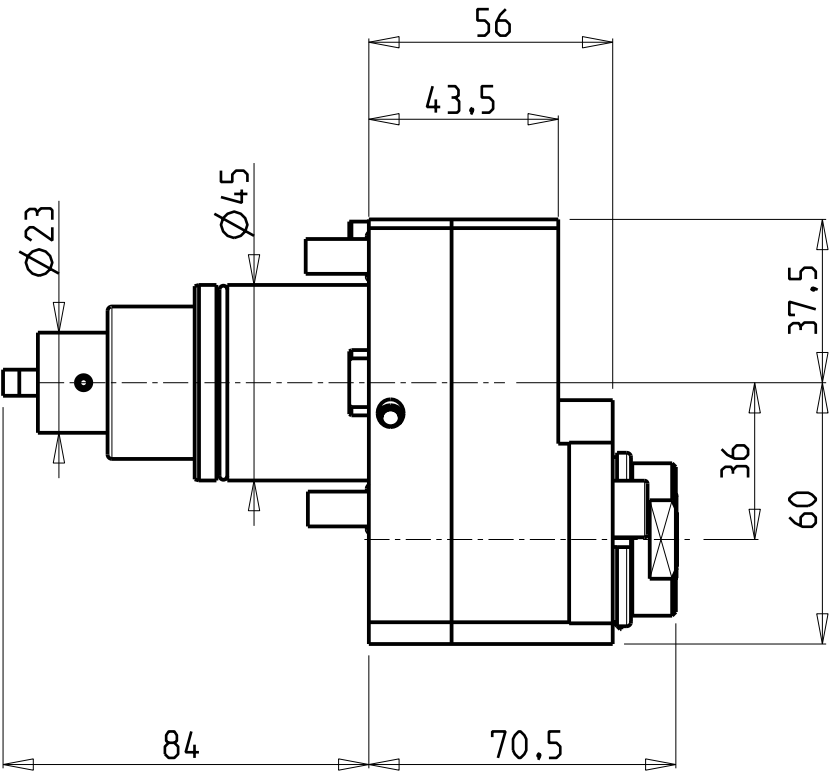


**M.T. srl**  
Via Casino Albini 480  
Tel. 0541/956034-957884  
Fax 0541/956341  
47842 S. GIOVANNI IN M. (RN)  
e-mail: [mtma@mtmarchetti.com](mailto:mtma@mtmarchetti.com)  
<http://www.mtmarchetti.com>

PRODUZIONE MODULI ROTANTI



PAGINA NXT030-1-30



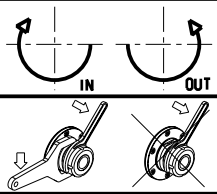
- Chiave inclusa
- Key included
- Schluessel inbegriffen

Cod. MT	Mandrino Spindle Spindel	I	RPM	Coppia Max Max Torque Max Drehmoment	Reversibile lato mandrino/contromandrino Reversible sub/main spindle side Umkehrbare Spindel-seite/ Gegenspindel-seite	Lubrificazione int. Coolant through Innenkuehlung	Lubrificazione est. Ext. coolant Aussenkuehlung	CHIAVI NON INCLUSE Keys not included Schluessel nicht einbegriffen		
DW 01892316	ERA16	1:3	18000	10Nm	X	-	X	CHUB30	CHUB19_SP3	CHTAER16ZC ■
DW 01892416	ERA16	1:3	18000	10Nm	X	P=70bar	X	CHUB30	CHUB19_SP3	CHTAER16ZC ■

NEXTURN  
NST 56/67 (BMT45 DUPLOMATIC)

MODULO MOTORIZZATO RADIALE MOLTIPLICATO I=1:3 DISASSATO IN Z 36mm  
Radial geared-up I=1:3 driven tool re-directed in Z by 36mm  
Radial angetriebenes Werkzeug uebersetzt I=1:3 achsversetzt in Z um 36mm

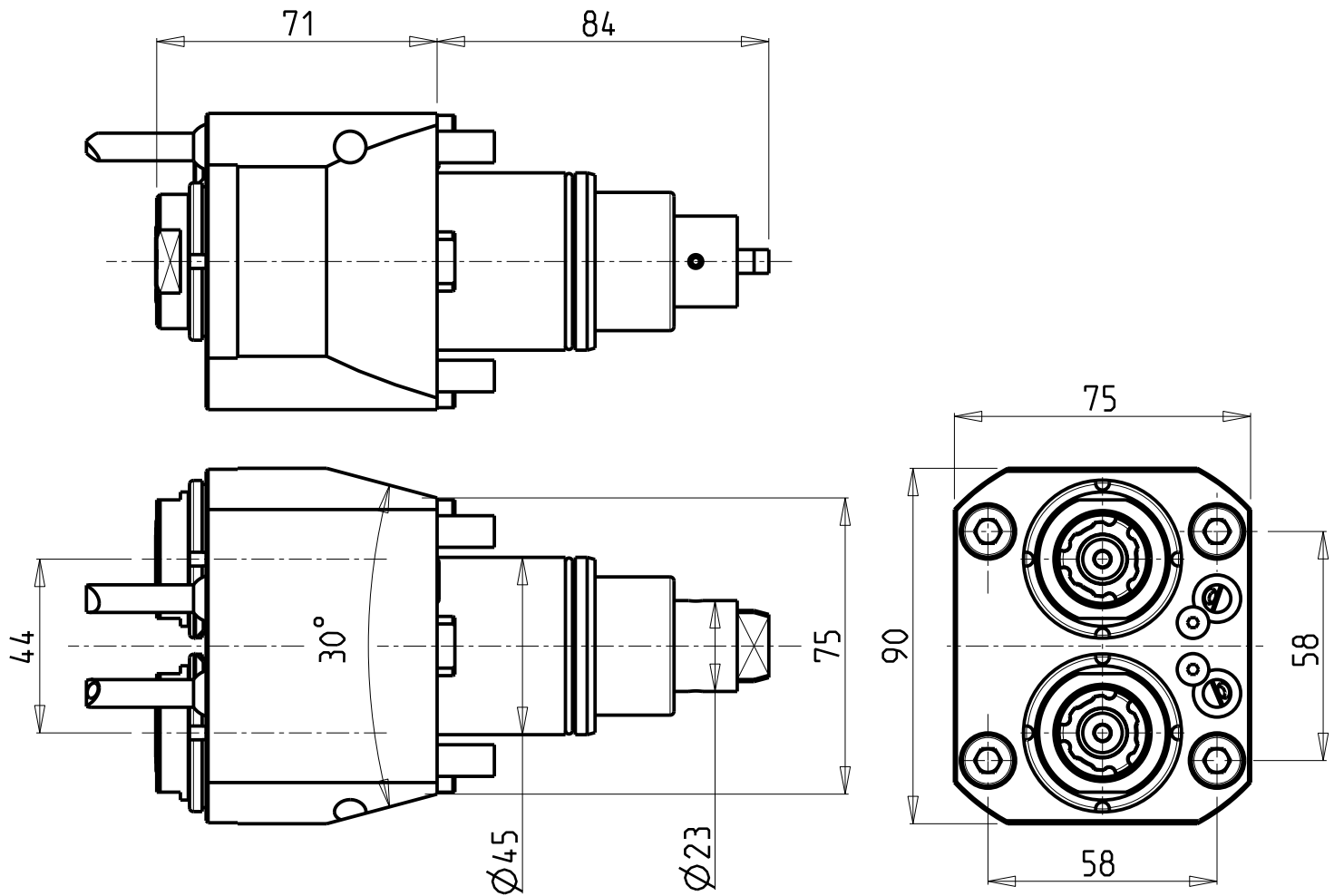
Subject to change without notice.



**M.T. srl**  
Via Casino Albini 480  
Tel. 0541/956034-957884  
Fax 0541/956341  
47842 S. GIOVANNI IN M. (RN)  
e-mail: [mtma@mtmarchetti.com](mailto:mtma@mtmarchetti.com)  
<http://www.mtmarchetti.com>

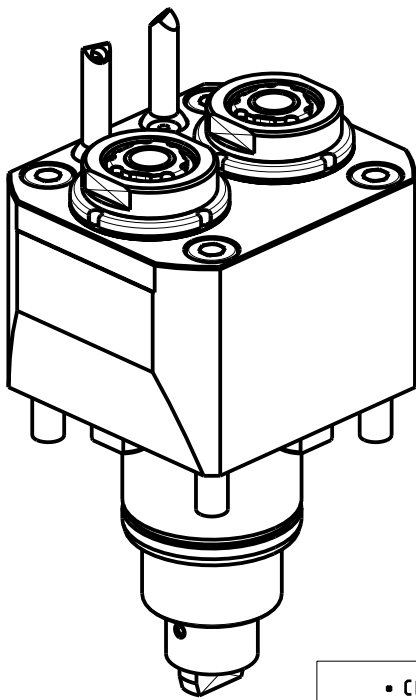
PRODUZIONE MODULI ROTANTI

PAGINA NXT030-1-50



**ATTENZIONE - ATTENTION - ACHTUNG**

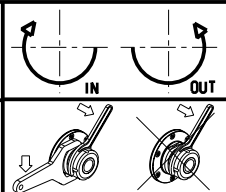
- Per lo smontaggio degli utensili utilizzare sempre la chiave di contrasto come indicato nel manuale d'uso.
- For disassembly of the tools use always the contrast key as mentioned in the user instructions.
- Fuer das Abmontieren der Werkzeuge immer den Gegenschlüssel benutzen wie in der Bedienungsanleitung erwaeht.



- Chiave inclusa
- Key included
- Schluessel inbegriffen

Cod. MT	Mandrino Spindle Spindel	I	RPM	Coppia Max Max Torque Max Drehmoment	Lubrificazione est. Ext. coolant Aussenkuehlung	CHIAVI NON INCLUSE Keys not included Schluessel nicht einbegriffen		
DW 01460216	ERA16	1:1	6000	30Nm	X	CHUB19_SP3	CHUB30	CHTAER16ZC •

NEXTURN  
NST 56/67 (BMT45 DUPLOMATIC)  
MODULO MOTORIZZATO RADIALE 2 USCITE IN Y  
Radial single side twin head driven tool in Y  
Radial angetriebenes Werkzeug 2 Ausgaenge in Y  
Subject to change without notice.

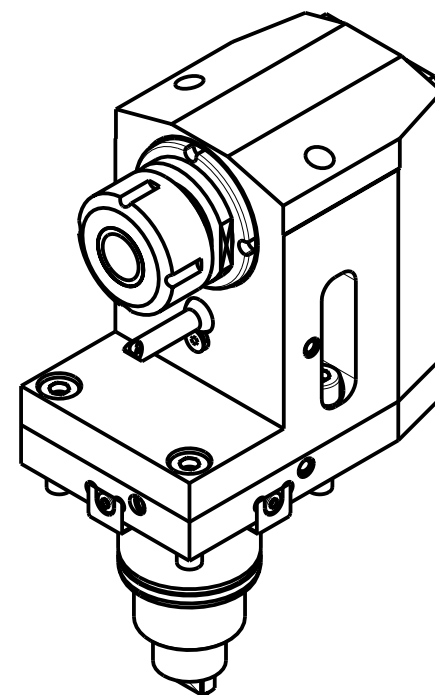
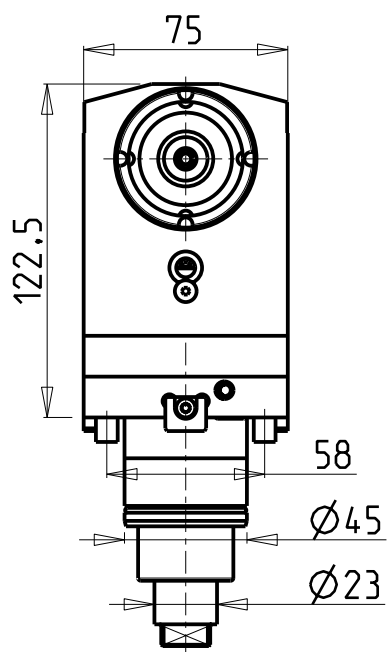
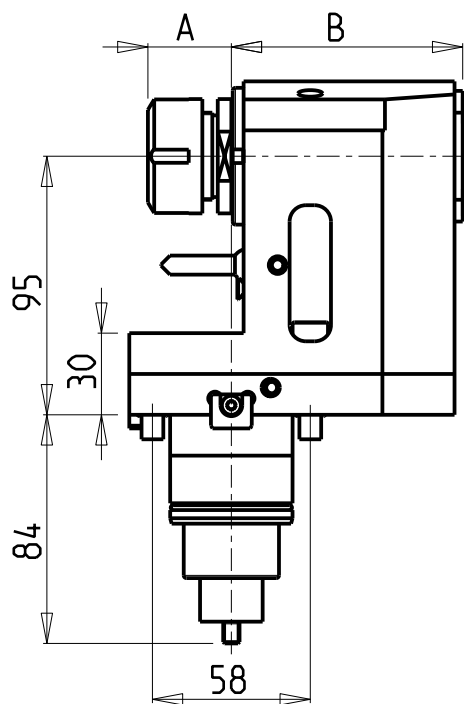


**M.T. srl**  
Via Casino Albini 480  
Tel. 0541/956034-957884  
Fax 0541/956341  
47842 S. GIOVANNI IN M. (RN)  
e-mail: [mtma@mtmarchetti.com](mailto:mtma@mtmarchetti.com)  
<http://www.mtmarchetti.com>

PRODUZIONE MODULI ROTANTI

PAGINA NXT080-1-00





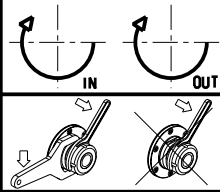
- Chiave inclusa
- Key included
- Schluessel inbegriffen

Cod. MT	Mandrino Spindle Spindel	I	RPM	Coppia Max Max Torque Max Drehmoment	Lubrificazione int. Coolant through Innenkuehlung	Lubrificazione est. Ext. coolant Aussenkuehlung	A	B	CHIAVI NON INCLUSE Keys not included Schluessel nicht inbegriffen		
DW 00970320	ERA20	1:1	6000	35Nm	-	X	13	85	CHUB22	CHUB38	CHTAER20ZC *
DW 00970420	ERA20	1:1	6000	35Nm	P=70bar	X	13	95	CHUB22	CHUB38	CHTAER20ZC *
DW 00970125	ER25	1:1	6000	35Nm	-	X	30.66	85	-	CHUB38	CHSTER25
DW 00970225	ER25	1:1	6000	35Nm	P=70bar	X	30.66	95	-	CHUB38	CHSTER25

NEXTURN  
NST 56/67 (BMT45 DUPLOMATIC)


MODULO MOTORIZZATO ASSIALE ARRETRATO  
Axial rear-set driven tool  
Axial angetriebenes Werkzeug zurueckversetzt

Subject to change without notice.

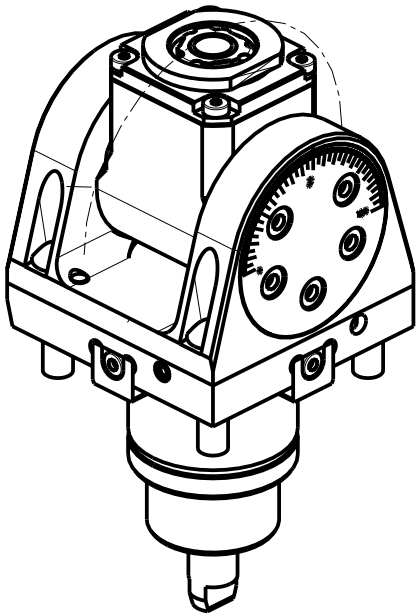
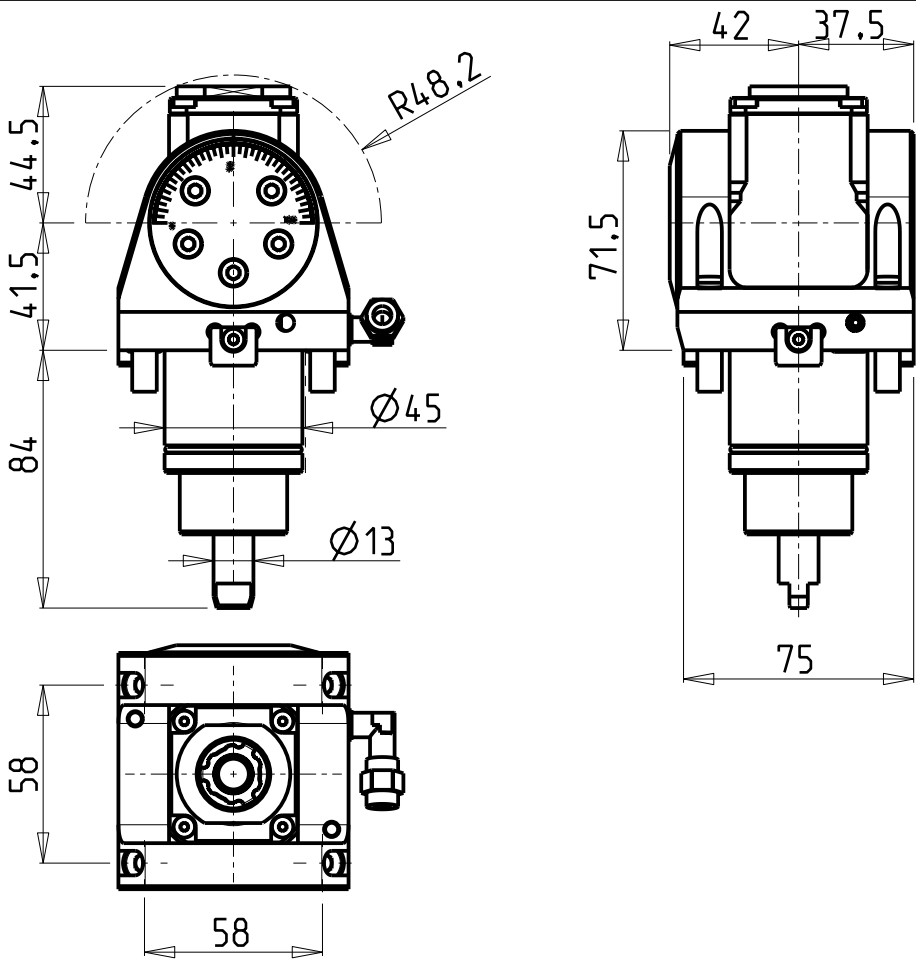


**M.T. srl**  
Via Casino Albini 480  
Tel. 0541/956034-957884  
Fax 0541/956341  
47842 S. GIOVANNI IN M. (RN)  
e-mail: [mtma@mtmarchetti.com](mailto:mtma@mtmarchetti.com)  
<http://www.mtmarchetti.com>

PRODUZIONE MODULI ROTANTI



PAGINA NXT180-1-10



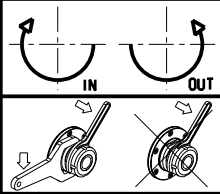
ATTENZIONE - ATTENTION - ACHTUNG

- Con l'utensile orientato a 0° o 180°, non è possibile eseguire lavorazioni a centro-pezzo!
- It is not possible to make machining operations at the center of the part with tool oriented at 0° or at 180°.
- Mit einem Werkzeug um 0° oder 180° orientiert, ist es nicht möglich, Verarbeitung von der Werkzeug-Mitte auszuführen.

Cod. MT	Mandrino Spindle Spindel	I	RPM	Coppia Max Max Torque Max Drehmoment	Reversibile lato mandrino/contromandrino Reversible sub/main spindle side Umkehrbare Spindel-seite/ Gegenspindel-seite	Lubrificazione est. Ext. coolant Aussenkuehlung	CHIAVI INCLUSE Keys included Schluessel inbegriffen			
DW00040116	ER A 16	1:1	6000	20Nm	X	X	CHUB19_SP3	CHUB32	CHESL05	CHTAER16ZC

NEXTURN  
NST 56/67 (BMT45 DUPLOMATIC)  
MODULO MOTORIZZATO ORIENTABILE  $\pm 90^\circ$   
 $\pm 90^\circ$  adjustable angle driven tool  
Angetriebenes Werkzeug schwenkbar  $\pm 90^\circ$

Subject to change without notice.

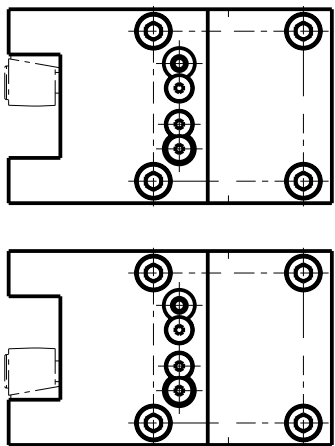
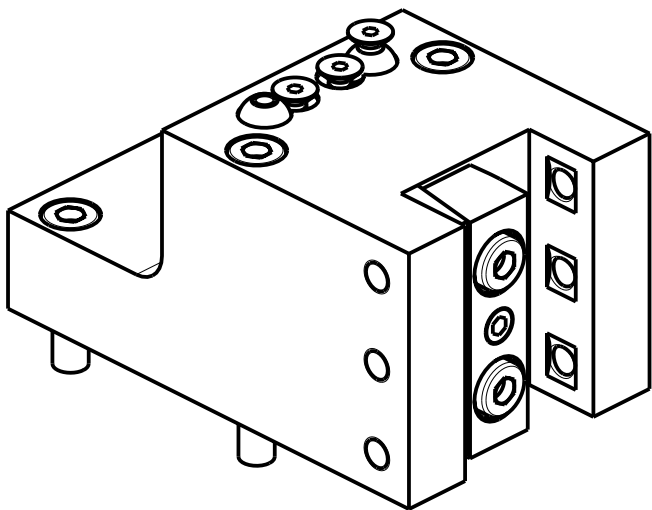
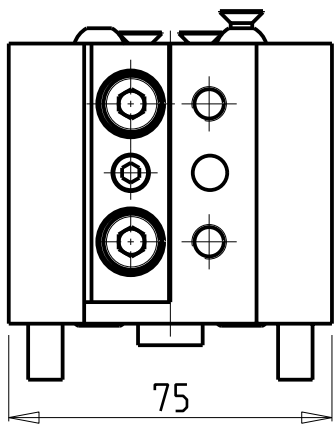
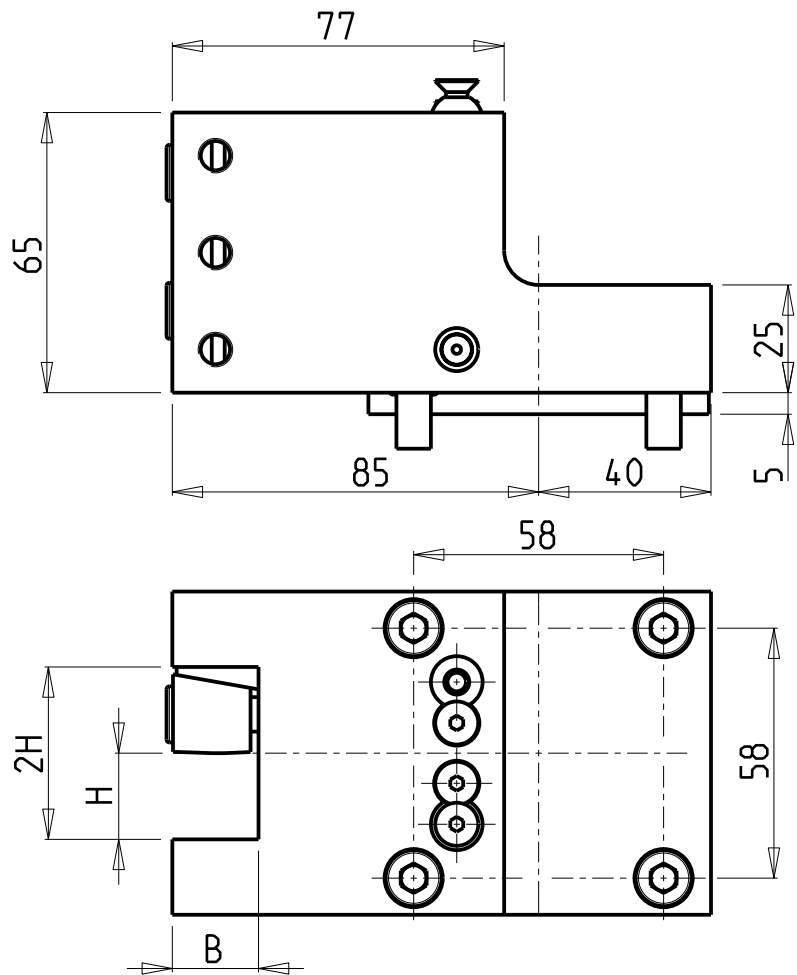


**M.T. srl**  
Via Casino Albini 480  
Tel. 0541/956034-957884  
Fax 0541/956341  
47842 S. GIOVANNI IN M. (RN)  
e-mail: [mtma@mtmarchetti.com](mailto:mtma@mtmarchetti.com)  
<http://www.mtmarchetti.com>

PRODUZIONE MODULI ROTANTI



PAGINA NXT335-1-00




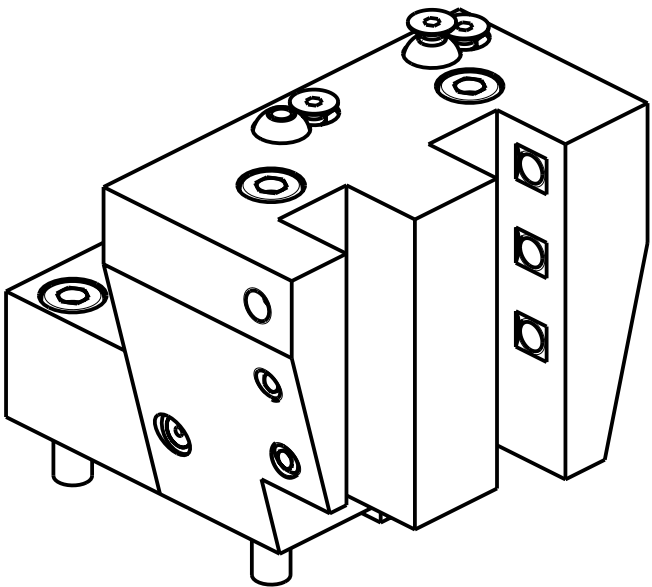
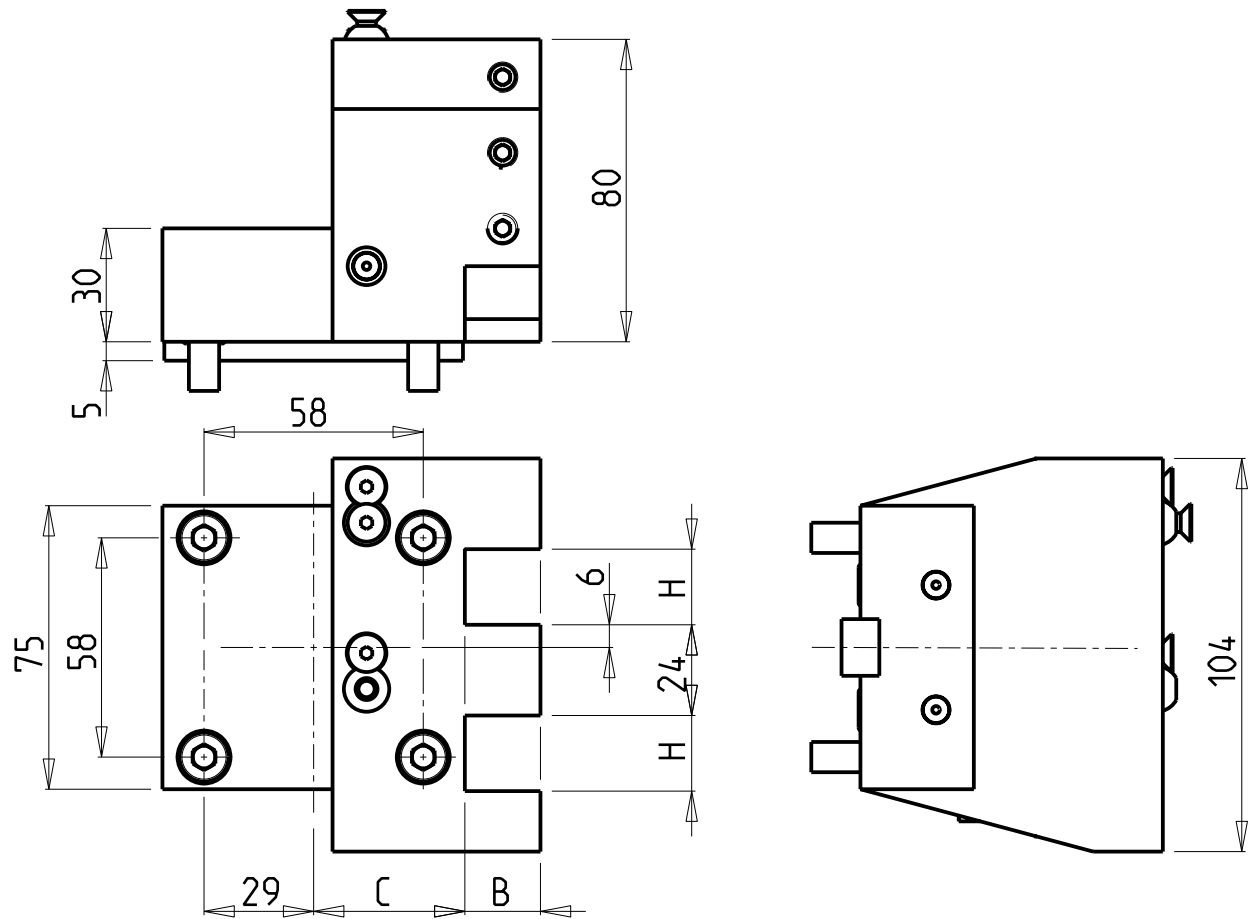
Cod. MT	N°Utensili N°Tools N°Werkzeuge	Reversibile lato mandrino/contromandrino Reversible sub/main spindle side Umkehrbare Spindel-seite/ Gegenspindel-seite	Misure Dimensions Masse	B	H
DW01022000	1/2	X	mm	20	20

NEXTURN  
NST 56/67 (BMT45 DUPLOMATIC)  
PORTAUTENSILE RADIALE SINGOLO QD=20mm  
Radial single static tool QD=20mm  
Radial Single-Werkzeughalter QD=20mm

Subject to change without notice.

**M.T. srl**  
Via Casino Albini 480  
Tel. 0541/956034-957884  
Fax 0541/956341  
47842 S. GIOVANNI IN M. (RN)  
e-mail: [mtma@mtmarchetti.com](mailto:mtma@mtmarchetti.com)  
<http://www.mtmarchetti.com>

PRODUZIONE MODULI ROTANTI  
  
PAGINA NXT420-1-00



Cod. MT	N°Utensili N°Tools N°Werkzeuge	Reversibile lato mandrino/contromandrino Reversible sub/main spindle side Umkehrbare Spindel-seite/ Gegenspindel-seite	Misure Dimensions Masse	B	H	C
DW00982000	2	X	mm	20	20	40
DW00981905	2	X	Inch	3/4"	3/4"	40.95

NEXTURN

NST 56/67 (BMT45 DUPLOMATIC)

PORTAUTENSILE RADIALE SOVRAPPOSTO QD=20mm / QD=3/4"

Radial single side twin static tool QD=20mm / QD=3/4"

Radial Werkzeughalter ueberlagert QD=20mm / QD=3/4"

M.T. srl

Via Casino Albini 480

Tel. 0541/956034-957884

Fax 0541/956341

47842 S. GIOVANNI IN M. (RN)

e-mail: [mtma@mtmarchetti.com](mailto:mtma@mtmarchetti.com)

<http://www.mtmarchetti.com>

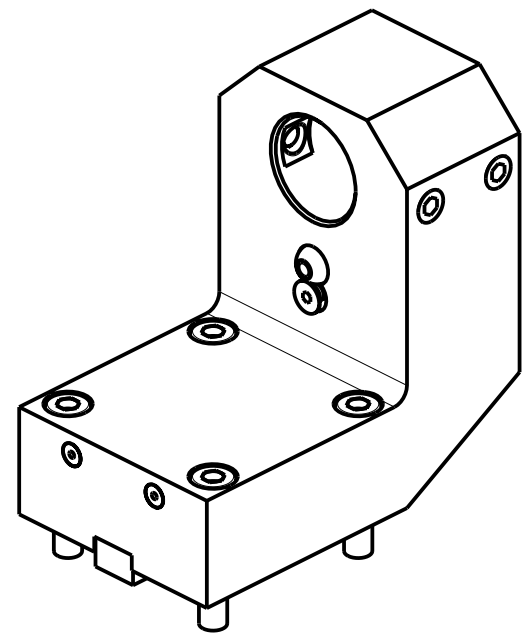
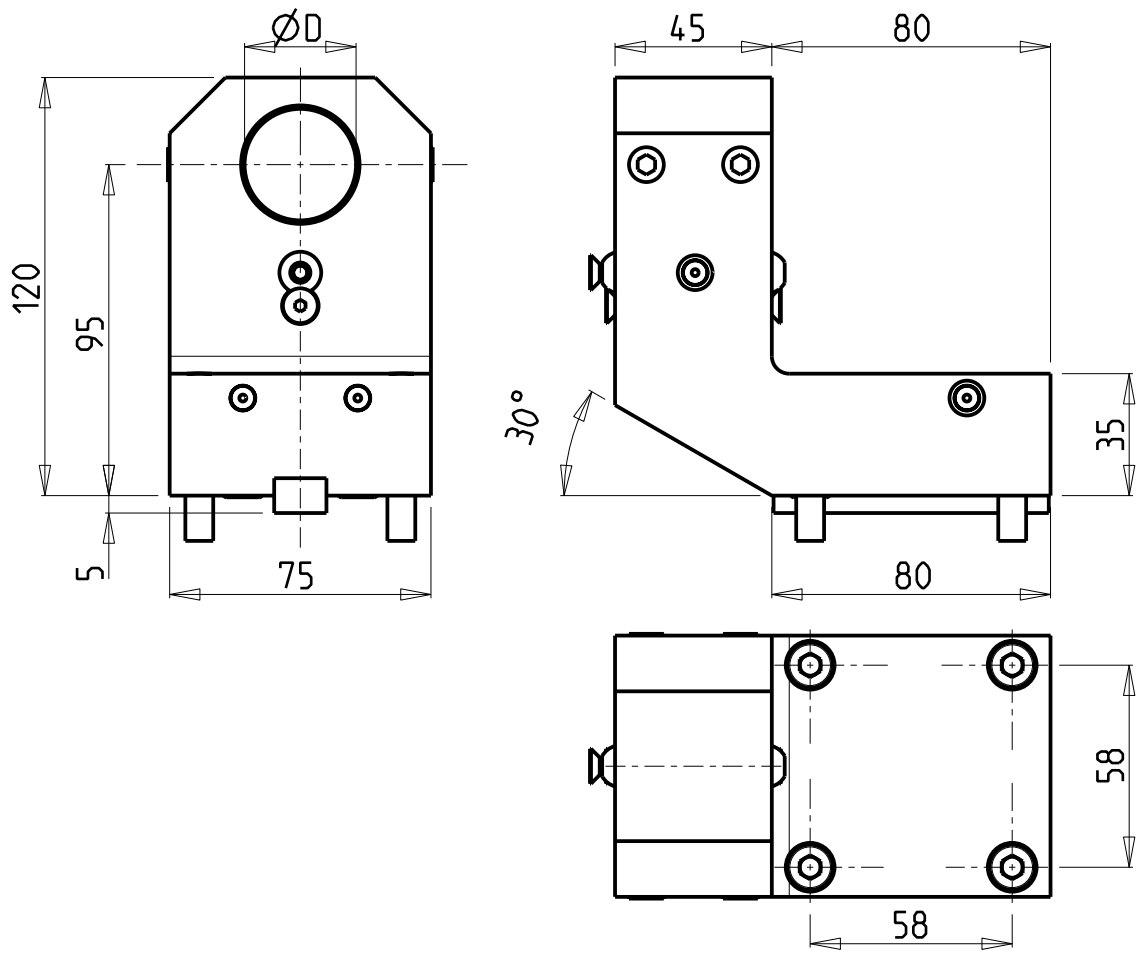
PRODUZIONE MODULI ROTANTI



PAGINA NXT440-1-00

Subject to change without notice.

09/2019



PER BOCCOLE DI RIDUZIONE VEDI PAG. TBL150-1-00  
FOR REDUCING BUSHINGS SEE PAGE TBL150-1-00  
FUER REDUZIERBUCHSE SIEHE SEITE TBL150-1-00


Cod. MT	N°Utensili N°Tools N°Werkzeuge	Reversibile lato mandrino/contromandrino Reversible sub/main spindle side Umkehrbare Spindel-seite/ Gegenspindel-seite	Lubrificazione est. Ext. coolant Aussenkuehlung	Misure Dimensions Masse	D
DW 01093200	1	X	X	mm	32
DW 01093175	1	X	X	Inch	1 1/4"

NEXTURN  
NST 56/67 (BMT45 DUPLOMATIC)  
PORTAUTENSILE ASSIALE ARRETRATO PER BARENO Ø32mm / Ø1 1/4"  
Axial single rear set boring bar holder Ø32mm / Ø1 1/4"  
Axial Bohrhälter zurueckversetzt Ø32mm / Ø1 1/4"

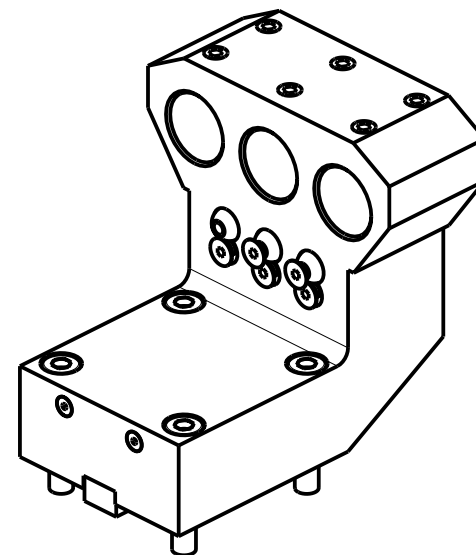
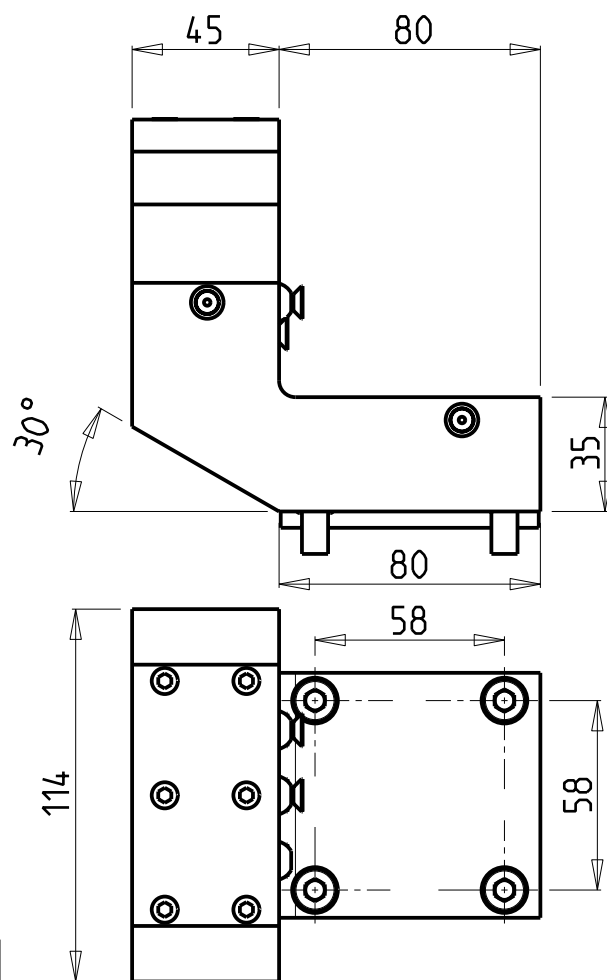
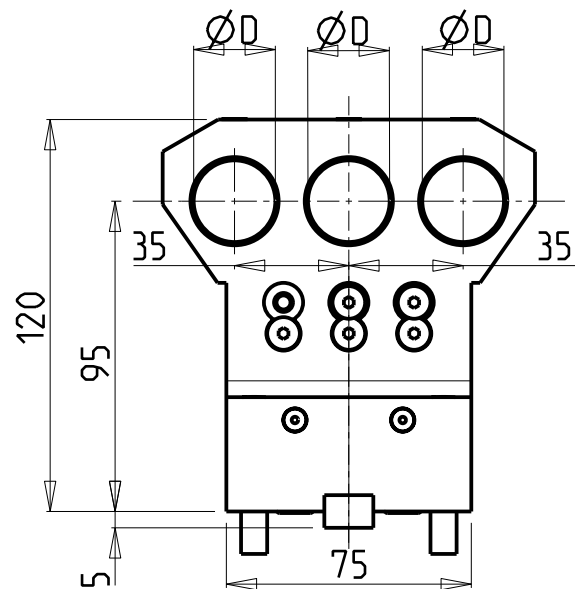
Subject to change without notice.

**M.T. srl**  
Via Casino Albini 480  
Tel. 0541/956034-957884  
Fax 0541/956341  
47842 S. GIOVANNI IN M. (RN)  
e-mail: [mtma@mtmarchetti.com](mailto:mtma@mtmarchetti.com)  
<http://www.mtmarchetti.com>

PRODUZIONE MODULI ROTANTI



PAGINA NXT845-1-10



Cod. MT	N°Utensili N°Tools N°Werkzeuge	Reversibile lato mandrino/contromandrino Reversible sub/main spindle side Umkehrbare Spindel-seite/ Gegenspindel-seite	Lubrificazione est. Ext. coolant Aussenkuehlung	D
DW00992500	3	X	X	25
DW00992540	3	X	X	1"


PER BOCCOLE DI RIDUZIONE VEDI PAG. TBL150-1-00  
FOR REDUCING BUSHINGS SEE PAGE TBL150-1-00  
FÜR REDUZIERBUCHSE SIEHE SEITE TBL150-1-00

NEXTURN  
NST 56/67 (BMT45 DUPLOMATIC)  
PORTAUTENSILE ASSIALE ARRETRATO PER BARENO 3 POSIZIONI Ø25mm / Ø1"  
Axial 3 position rear set boring bar holder Ø25mm / Ø1"  
Axial Bohrhälter 3 Positionen zurueckversetzt Ø25mm / Ø1"

Subject to change without notice.

**M.T. srl**  
Via Casino Albini 480  
Tel. 0541/956034-957884  
Fax 0541/956341  
47842 S. GIOVANNI IN M. (RN)  
e-mail: [mtma@mtmarchetti.com](mailto:mtma@mtmarchetti.com)  
<http://www.mtmarchetti.com>

PRODUZIONE MODULI ROTANTI



PAGINA NXT904-1-00