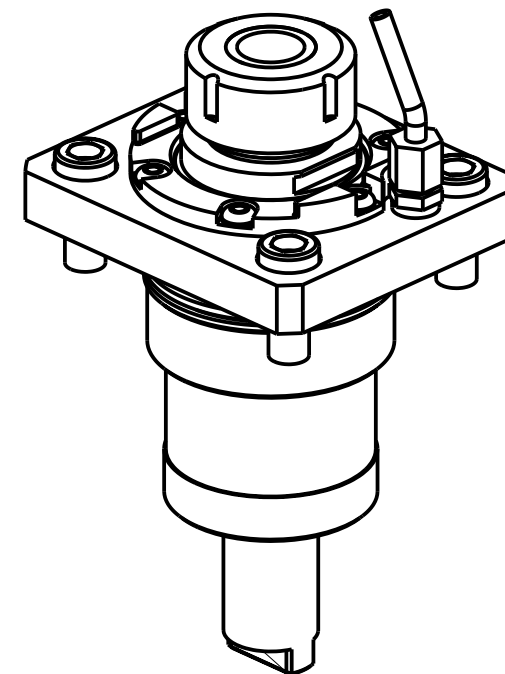
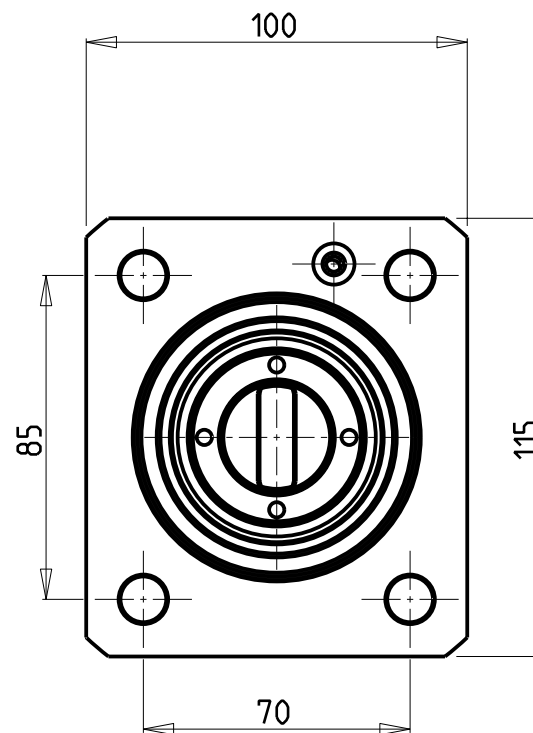
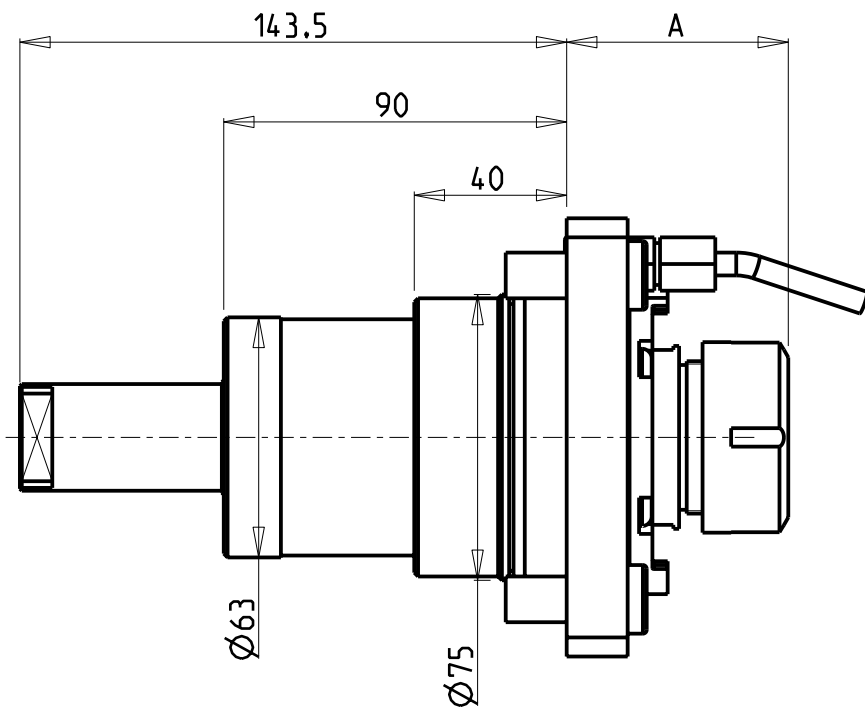


| | | PAGINA Page Seite |
|---|---|-------------------------|
| MODULO MOTORIZZATO RADIALE Radial driven tool Radial angetriebenes Werkzeug |  | NKM010.5.00 |
| MODULO MOTORIZZATO ASSIALE H=90mm Axial driven tool H=90mm Axial angetriebenes Werkzeug H=90mm |  | NKM150.5.10 |
| PORTAUTENSILE RADIALE SINGOLO QD=25mm Radial single static tool QD=25mm Radial Single-Werkzeughalter QD=25mm |  | NKM423.5.00 |
| PORTAUTENSILE ASSIALE PER BARENO Ø32mm H=105mm Axial single boring bar holder Ø32mm H=105mm Axial Bohrhalter Ø32mm H=105mm |  | NKM650.5.10 |

Distributeur/ importateur : Crylax 0033 450 960920 - info@crylax.com



| Cod. MT | Mandrino Spindle Spindel | I | RPM | Coppia Max Max Torque Max Drehmoment | Lubrificazione est. Ext. coolant Aussenkuehlung | A | CHIAVI NON INCLUSE Keys not included Schluessel nicht einbegriffen | |
|------------|--------------------------------|-----|------|--|---|------|--|--------------|
| NKM1590132 | ER32 | 1:1 | 4000 | 80Nm | X | 58.2 | CHSTER32 | OKU0650004 • |
| NKM1590140 | ER40 | 1:1 | 4000 | 80Nm | X | 69.7 | CHSTER40 | OKU0650004 • |

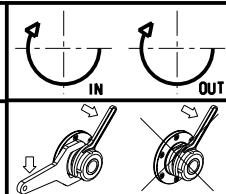
- Chiave inclusa
- Key included
- Schluessel inbegriffen

NAKAMURA-TOME

MOD: SC-450 - STS-40 - STW-40 - TW30 12ST.


MODULO MOTORIZZATO RADIALE
Radial driven tool
Radial angetriebenes Werkzeug

Subject to change without notice.

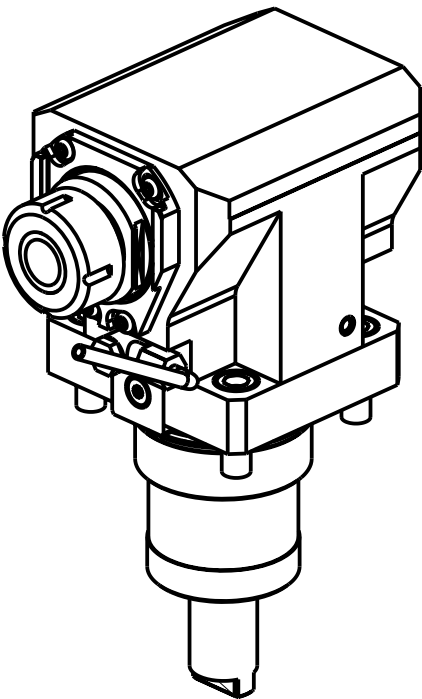
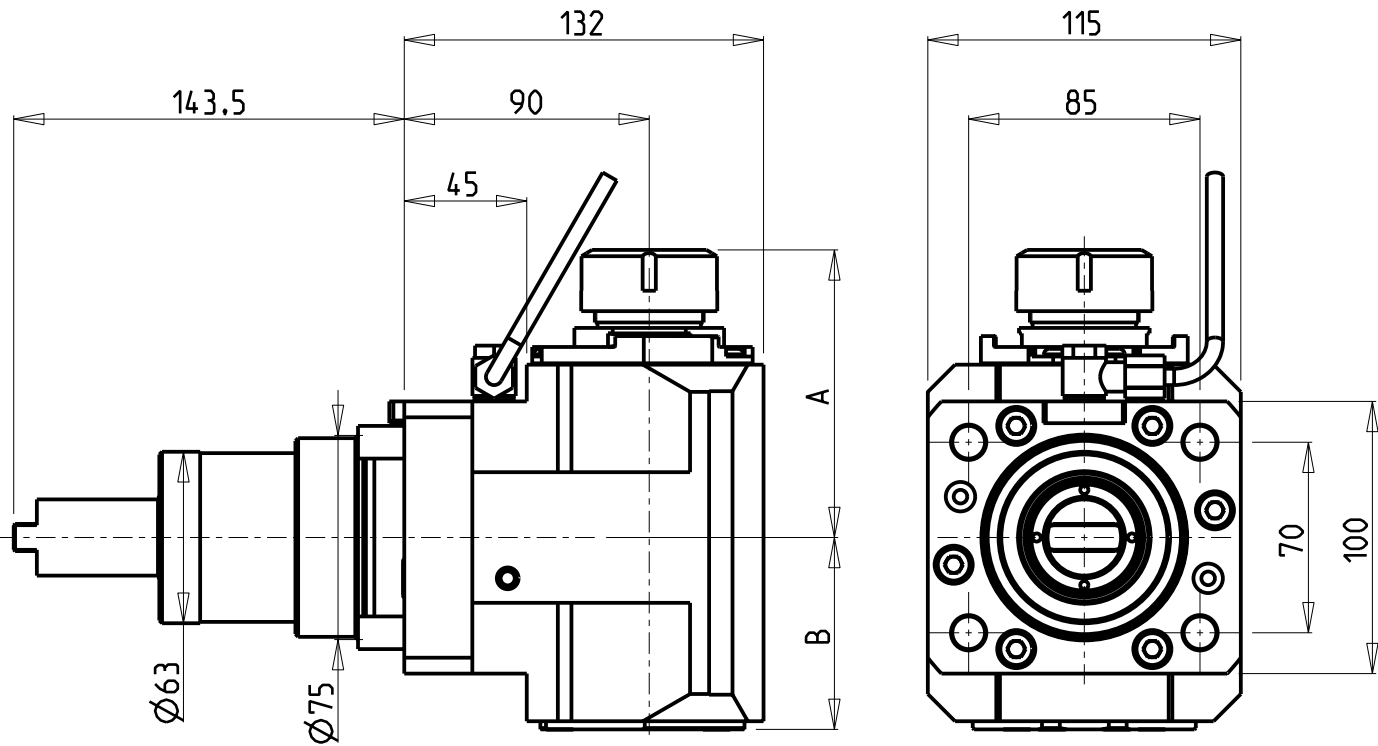


M.T. srl
Via Casino Albini 480
Tel. 0541/956034-957884
Fax 0541/956341
47842 S. GIOVANNI IN M. (RN)
e-mail: mtma@mtmarchetti.com
<http://www.mtmarchetti.com>

PRODUZIONE MODULI ROTANTI



PAGINA NKM010-5-00

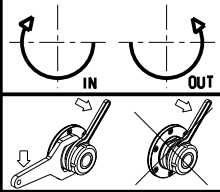


- Chiave inclusa
- Key included
- Schluessel inbegriffen


| Cod. MT | Mandrino Spindle Spindel | I | RPM | Coppia Max Max Torque Max Drehmoment | Reversibile lato mandrino/controlmandrino Reversible sub/main spindle side Umkehrbare Spindel-seite/ Gegenspindel-seite | Lubr.interna Coolant through Innenkuehlung | Lubr. esterna Ext. coolant Aussenkuehlung | A | B | CHIAVI NON INCLUSE Keys not included Schluessel nicht einbegriffen | |
|------------|--------------------------------|-----|------|--|--|--|---|-------|------|--|------------|
| NKM1570132 | ER32 | 1:1 | 4000 | 60Nm | X | - | X | 105.7 | 70.5 | CHSTER32 | OKU0650004 |
| NKM1570140 | ER40 | 1:1 | 4000 | 60Nm | X | - | X | 108.7 | 70.5 | CHSTER40 | OKU0650004 |
| NKM1570232 | ER32 | 1:1 | 4000 | 60Nm | X | P=70bar | X | 105.7 | 81.5 | CHSTER32 | OKU0650004 |
| NKM1570240 | ER40 | 1:1 | 4000 | 60Nm | X | P=70bar | X | 108.7 | 81.5 | CHSTER40 | OKU0650004 |

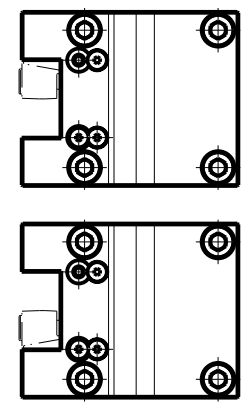
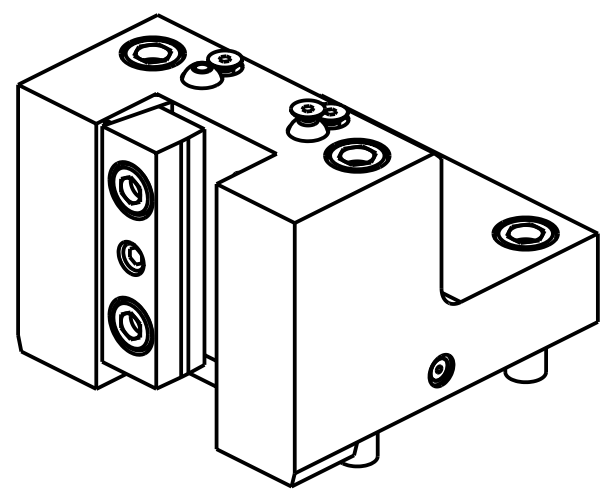
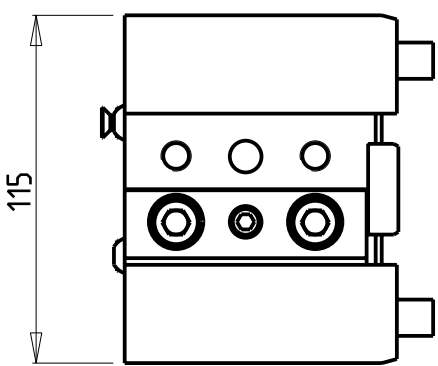
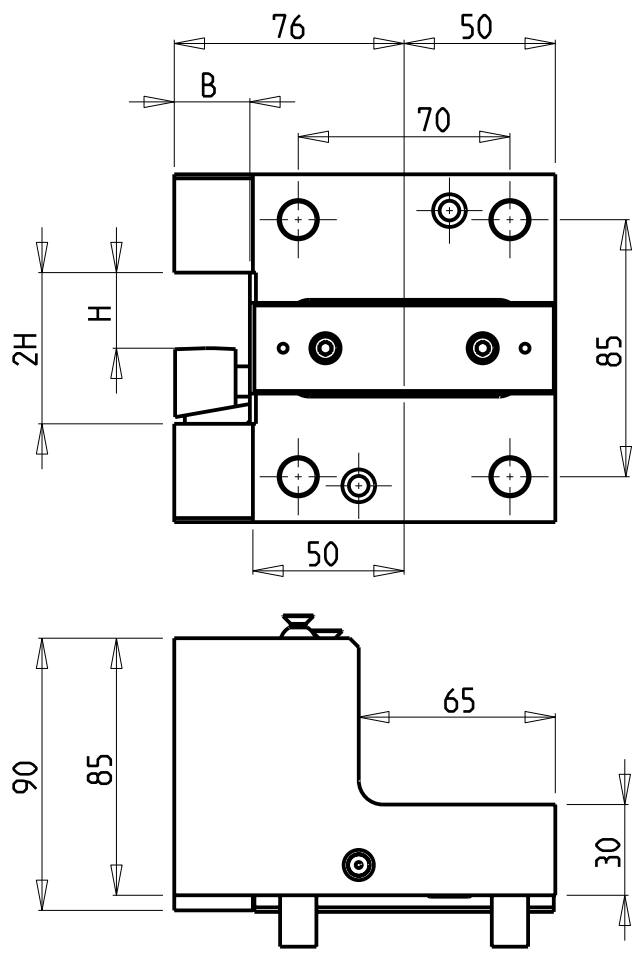
NAKAMURA-TOME
MOD: SC-450 - STS-40 - STW-40 - TW 30 12ST.

MODULO MOTORIZZATO ASSIALE H=90mm
Axial driven tool H=90mm
Axial angetriebenes Werkzeug H=90mm



M.T. srl
Via Casino Albini 480
Tel. 0541/956034-957884
Fax 0541/956341
47842 S. GIOVANNI IN M. (RN)
e-mail: mtma@mtmarchetti.com
<http://www.mtmarchetti.com>

PRODUZIONE MODULI ROTANTI

PAGINA NKM150-5-10



| Cod. MT | N°Utensili N°Tools N°Werkzeuge | Reversibile lato mandrino/contromandrino Reversible sub/main spindle side Umkehrbare Spindelseite/ Gegenspindelseite | Misure Dimensions Masse | B | H |
|------------|--------------------------------------|---|-------------------------------|----|----|
| NKM1602500 | 1 | X | mm | 25 | 25 |

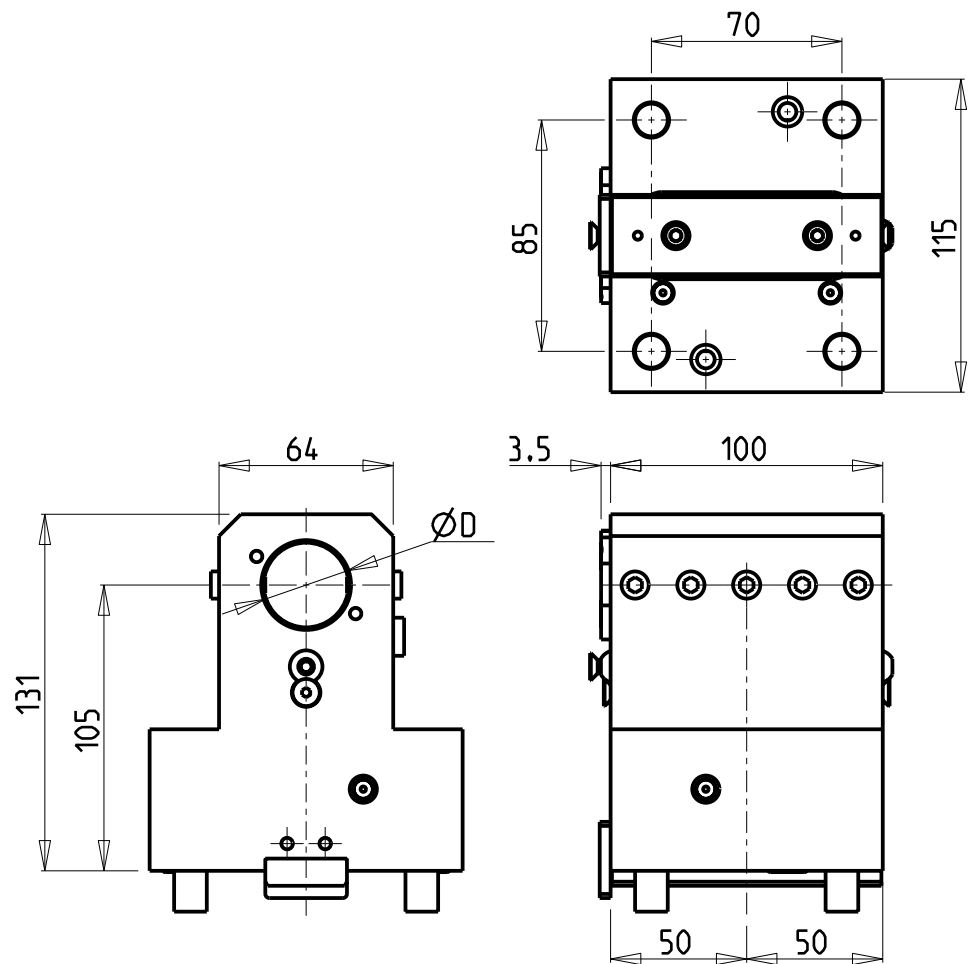
NAKAMURA-TOME
MOD: SC-450 - STS-40 - STW-40 - TW 30 12ST.
PORTAUTENSILE RADIALE SINGOLO QD=25mm
Radial single static tool QD=25mm
Radial Single-Werkzeughalter QD=25mm

Subject to change without notice.

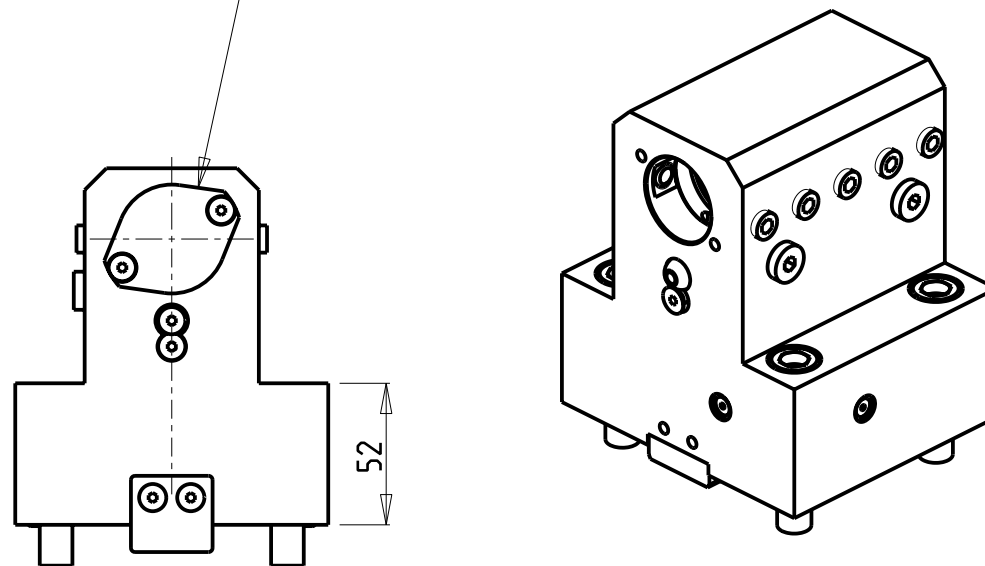
M.T. srl
Via Casino Albini 480
Tel. 0541/956034-957884
Fax 0541/956341
47842 S. GIOVANNI IN M. (RN)
e-mail: mtma@mtmarchetti.com
<http://www.mtmarchetti.com>

PRODUZIONE MODULI ROTANTI

PAGINA NKM423-5-00



KIT ADDUZIONE INTERNA (OPZIONALE)
KIT FOR INTERNAL COOLANT (OPTIONAL)
KIT FÜR INTERNE KUEHLMITTELZUFUHR (OPTIONAL)
Ø32 cod. KIT1000001



PER BOCCOLE DI RIDUZIONE VEDI PAG. TBL150-1-00
FOR REDUCING BUSHINGS SEE PAGE TBL150-1-00
FÜR REDUZIERBUCHSE SIEHE SEITE TBL150-1-00


| Cod. MT | N°Utensili N°Tools N°Werkzeuge | Reversibile lato mandrino/contromandrino Reversible sub/main spindle side Umkehrbare Spindel-seite/ Gegenspindel-seite | Lubrificazione int. opzionale Coolant through optional Innenkuehlung Optional | Lubrificazione est. Ext. coolant Aussenkuehlung | D |
|------------|--------------------------------------|---|--|---|----|
| NKM1613200 | 1 | X | X | X | 32 |

NAKAMURA-TOME
MOD: SC-450 - STS-40 - STW-40 - TW30 12ST.
PORTAUTENSILE ASSIALE PER BARENO Ø32mm H=105mm
Axial single boring bar holder Ø32mm H=105mm
Axial Bohrhälter Ø32mm H=105mm

Subject to change without notice.

M.T. srl
Via Casino Albini 480
Tel. 0541/956034-957884
Fax 0541/956341
47842 S. GIOVANNI IN M. (RN)
e-mail: mtma@mtmarchetti.com
<http://www.mtmarchetti.com>

PRODUZIONE MODULI ROTANTI



PAGINA NKM650-5-10