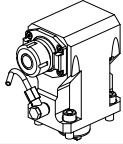
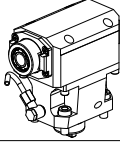
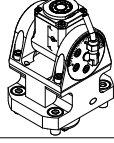
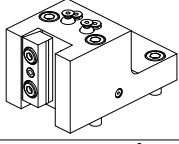
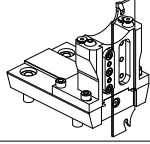
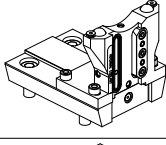
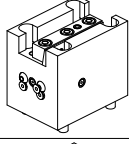
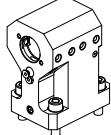
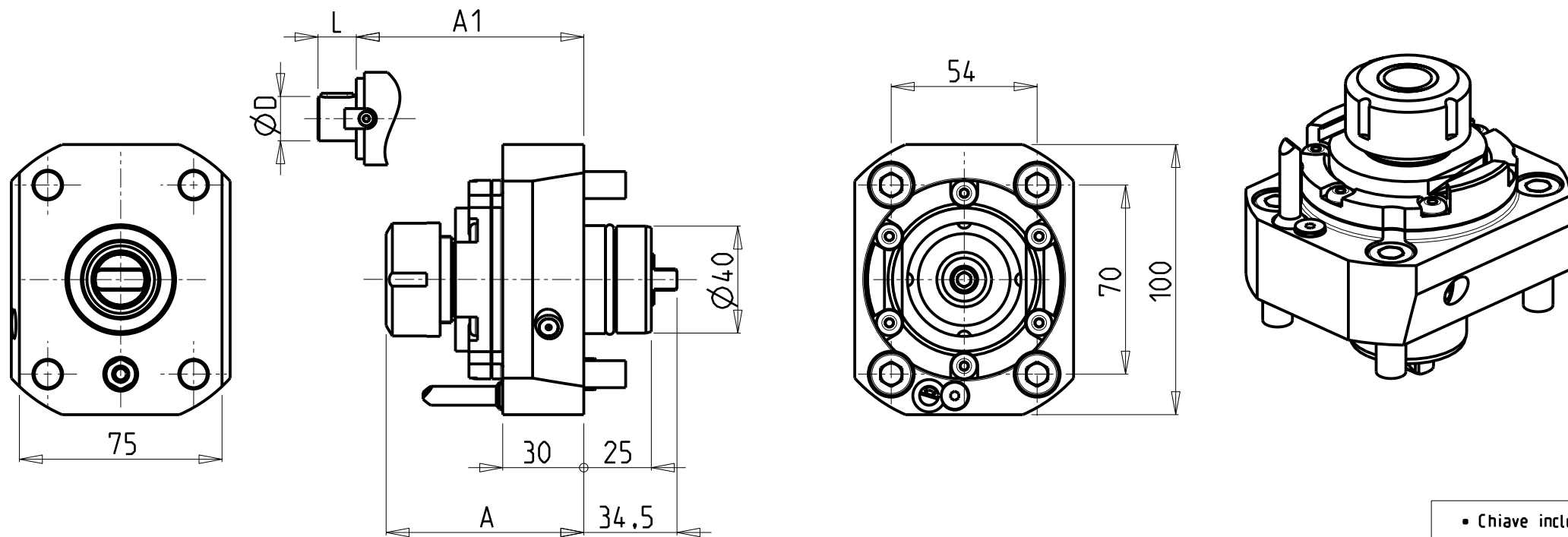


		PAGINA Page Seite
MODULO MOTORIZZATO RADIALE Radial driven tool Radial angetriebenes Werkzeug		MUR010.2.00
MODULO MOTORIZZATO ASSIALE H=100mm Axial driven tool H=100mm Axial angetriebenes Werkzeug H=100mm		MUR150.2.10
MODULO MOTORIZZATO ASSIALE MOLTIPLICATO I=1:2 H=100mm Axial geared-up I=1:2 driven tool H=100mm Axial angetriebenes Werkzeug uebersetzt I=1:2 H=100mm		MUR200.2.10
MODULO MOTORIZZATO ORIENTABILE ±90° H=74mm ±90° adjustable angle driven tool H=74mm Angetriebenes Werkzeug schwenkbar ±90° H=74mm		MUR335.2.00
PORTAUTENSILE RADIALE SINGOLO QD=20mm Radial single static tool QD=20mm Radial Single-Werkzeughalter QD=20mm		MUR420.2.00
PORTAUTENSILE RADIALE PER LAMA Radial blade holder Radial Abstechhalter		MUR520.2.01
PORTAUTENSILE RADIALE PER LAMA CON LUBRIFICAZIONE INTERNA Radial blade holder with internal coolant Radial Abstechhalter mit Innenkuehlung		MUR520.2.05
PORTAUTENSILE ASSIALE SINGOLO QD=20mm Axial single static tool QD=20mm Axial Single-Werkzeughalter QD=20mm		MUR550.2.00
PORTAUTENSILE ASSIALE PER BARENO Ø32mm H=95mm Axial single boring bar holder Ø32mm H=95mm Axial Bohrhalter Ø32mm H=95mm		MUR650.2.10

Distributeur/ importateur : Crylax 0033 450 960920 - info@crylax.com



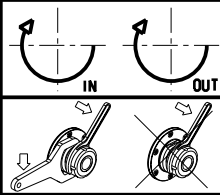
- Chiave inclusa
- Key included
- Schluessel inbegriffen

Cod. MT	Mandrino Spindle Spindel	I	RPM	Coppia Max Max Torque Max Drehmoment	Lubrificazione int. Coolant through Innenkuehlung	Lubrificazione est. Ext. coolant Aussenkuehlung	A	A1	D	L	CHIAVI NON INCLUDE Keys not included Schluessel nicht einbegriffen	
MUR0040125	ER25	1:1	6000	40Nm	-	X	73.16	-	-	-	MNZ0410005	CHSTER25
MUR0040325	ERA25	1:1	6000	40Nm	-	X	59.5	-	-	-	MNZ0410005	CHUB27
MUR0040132	ER32	1:1	6000	40Nm	-	X	76.16	-	-	-	MNZ0410005	CHSTER32
MUR0040225	ER25	1:1	6000	40Nm	P=30bar	X	88.16	-	-	-	MNZ0410005	CHSTER25
MUR0040425	ERA25	1:1	6000	40Nm	P=30bar	X	74.5	-	-	-	MNZ0410005	CHUB27
MUR0040232	ER32	1:1	6000	40Nm	P=30bar	X	91.16	-	-	-	MNZ0410005	CHSTER32
MUR0040516	Ø16x17	1:1	6000	40Nm	-	X	-	54.5	16	17	MNZ0410005	CH_VTCROCE_M08

MURATEC
MOD: MD60 - MD120

MODULO MOTORIZZATO RADIALE
Radial driven tool
Radial angetriebenes Werkzeug

Subject to change without notice.

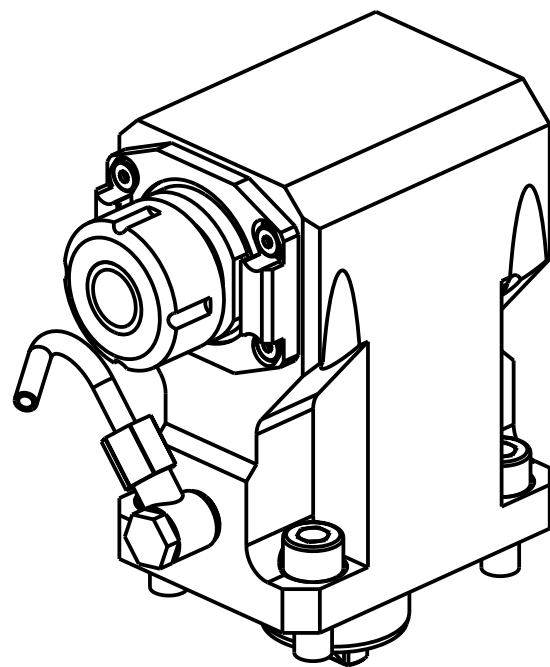
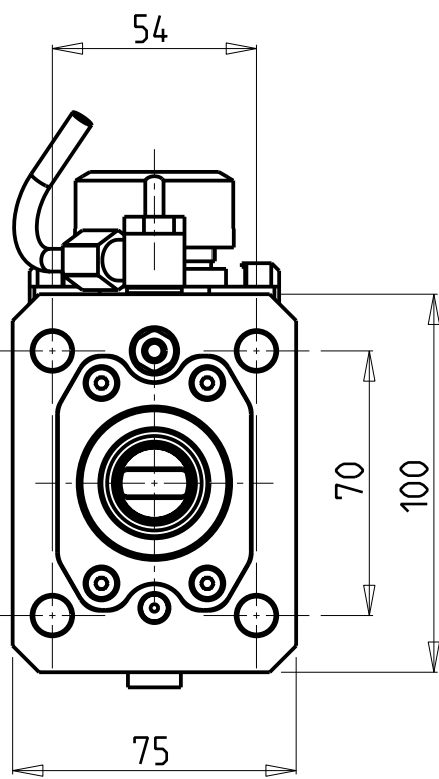
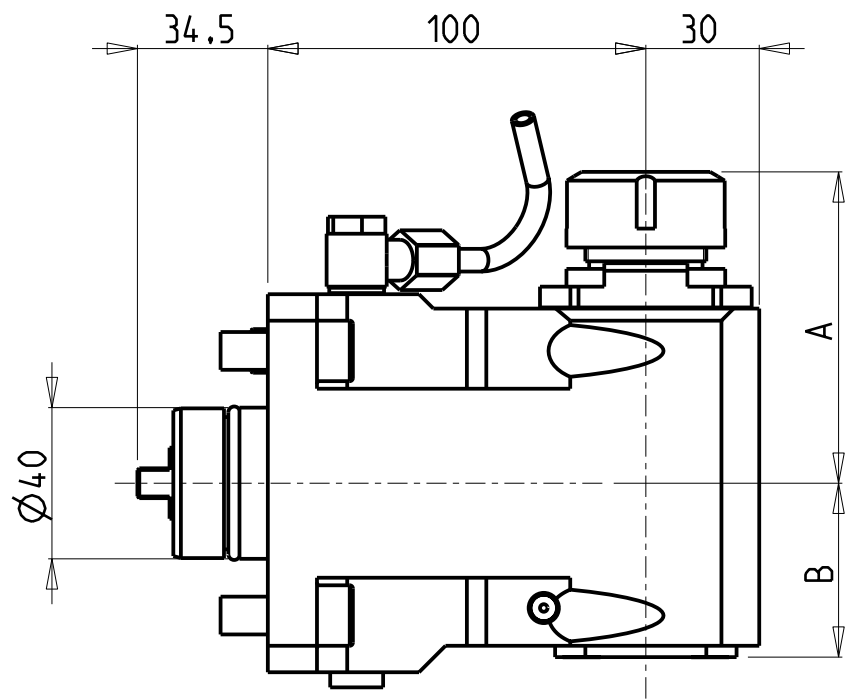


M.T. srl
Via Casino Albini 480
Tel. 0541/956034-957884
Fax 0541/956341
47842 S. GIOVANNI IN M. (RN)
e-mail: mtma@mtmarchetti.com
<http://www.mtmarchetti.com>

PRODUZIONE MODULI ROTANTI



PAGINA MUR010-2-00



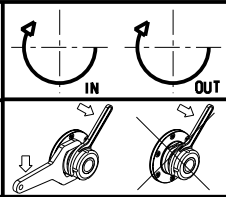
Cod. MT	Mandrino Spindle Spindel	I	RPM	Coppia Max Max Torque Max Drehmoment	Lubrificazione int. Coolant through Innenkuehlung	Lubrificazione est. Ext. coolant Aussenkuehlung	A	B	CHIAVI NON INCLUSE Keys not included Schluessel nicht einbegriffen	
MUR0080125	ER25	1:1	6000	50Nm	-	X	82.36	46	CHSTER25	OKU0290009 *
MUR0080225	ER25	1:1	6000	50Nm	P=70bar	X	82.36	56	CHSTER25	OKU0290009 *

- Chiave inclusa
- Key included
- Schluessel inbegriffen

MURATEC
MOD: MD60 - MD120

MODULO MOTORIZZATO ASSIALE H=100mm
Axial driven tool H=100mm
Axial angetriebenes Werkzeug H=100mm

Subject to change without notice.

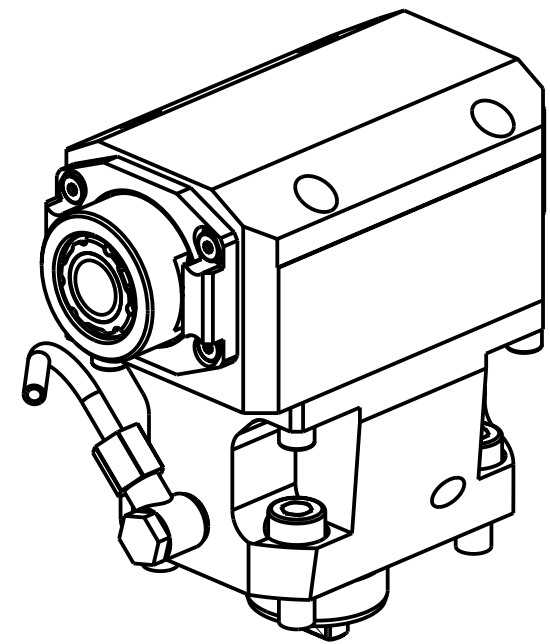
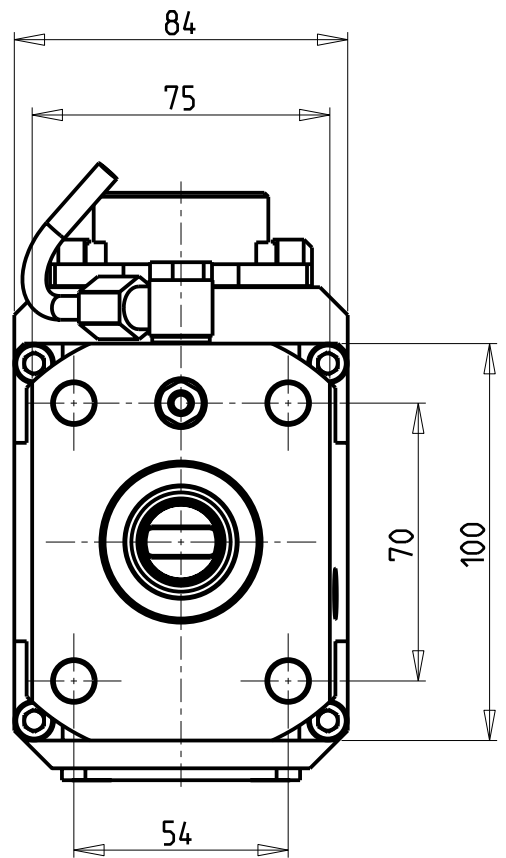
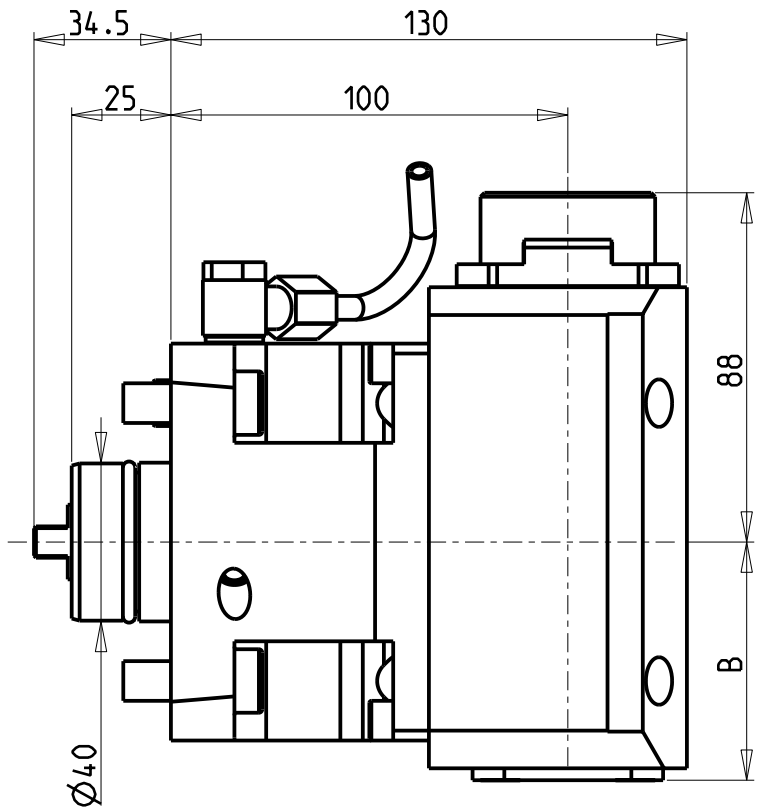


M.T. srl
Via Casino Albini 480
Tel. 0541/956034-957884
Fax 0541/956341
47842 S. GIOVANNI IN M. (RN)
e-mail: mtma@mtmarchetti.com
<http://www.mtmarchetti.com>

PRODUZIONE MODULI ROTANTI



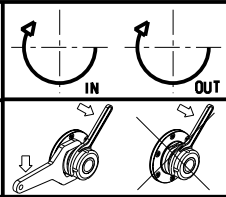
PAGINA MUR150-2-10



Cod. MT	Mandrino Spindle Spindel	I	RPM	Coppia Max Max Torque Max Drehmoment	Lubrificazione int. Coolant through Innenkuehlung	Lubrificazione est. Ext. coolant Aussenkuehlung	B	CHIAVI NON INCLUSE Keys not included Schluessel nicht einbegriffen		
MUR0150325	ERA25	1:2	12000	30Nm	-	X	60	CHUB27	CHTAER25ZC	OKU0290009
MUR0150425	ERA25	1:2	12000	30Nm	P=70bar	X	70	CHUB27	CHTAER25ZC	OKU0290009

- Chiave inclusa
- Key included
- Schluessel inbegriffen

MURATEC
MOD: MD60 - MD120
MODULO MOTORIZZATO ASSIALE MOLTIPLICATO I=1:2 H=100mm
Axial gear-up I=1:2 driven tool H=100mm
Axial angetriebenes Werkzeug uebersetzt I=1:2 H=100mm

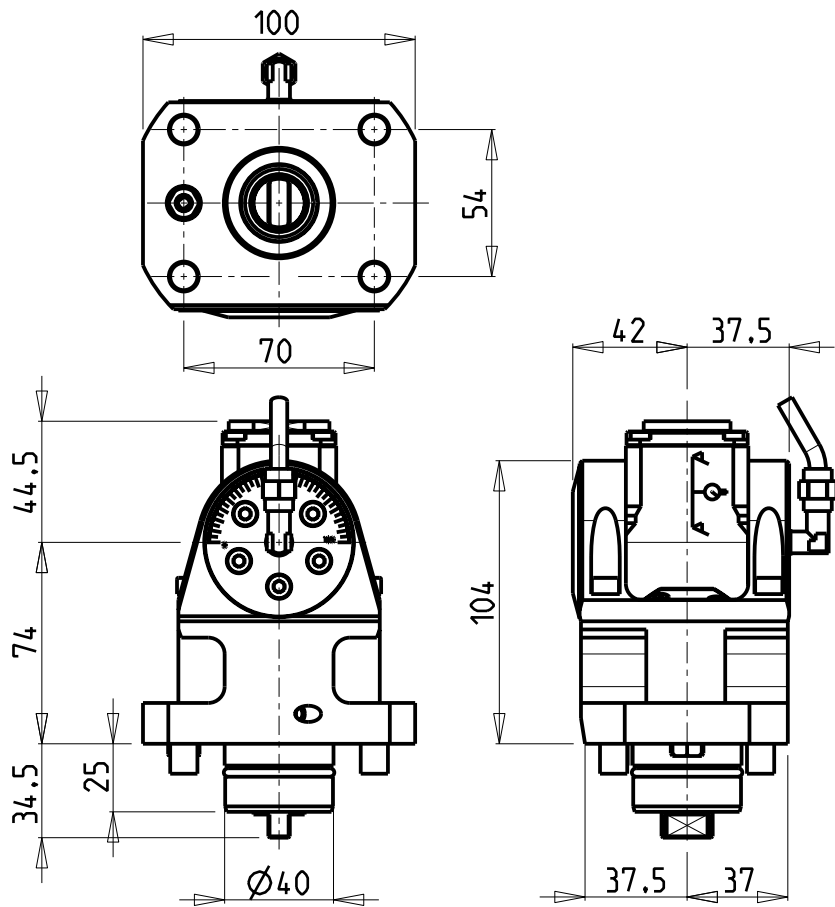


M.T. srl
Via Casino Albini 480
Tel. 0541/956034-957884
Fax 0541/956341
47842 S. GIOVANNI IN M. (RN)
e-mail: mtma@mtmarchetti.com
<http://www.mtmarchetti.com>

PRODUZIONE MODULI ROTANTI

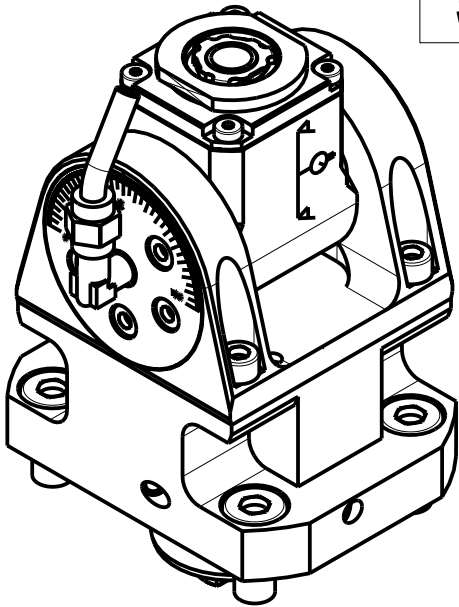


PAGINA MUR200-2-10



ATTENZIONE - ATTENTION - ACHTUNG

- Con l'utensile orientato a 0° o 180°, non è possibile eseguire lavorazioni a centro-pezzo!
- It is not possible to make machining operations at the center of the part with tool oriented at 0° or at 180°
- Mit einem Werkzeug um 0° oder 180° orientiert, ist es nicht möglich, Verarbeitung von der Werkzeug-Mitte auszuführen.

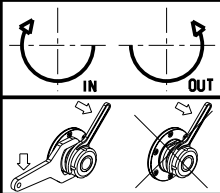


Cod. MT	Mandrino Spindle Spindel	I	RPM	Coppia Max Max Torque Max Drehmoment	Lubrificazione int. Coolant through Innenkuehlung	Lubrificazione est. Ext. coolant Aussenkuehlung	CHIAVI INCLUSE Keys included Schlüssel inbegriffen			
MUR0060116	ER A 16	1:1	6000	20Nm	-	X	CHUB19_SP3	CHUB32	CHESL07	CHTAER16ZC
MUR0060216	ER A 16	1:1	6000	20Nm	P=70bar	X	CHUB19_SP3	CHUB32	CHESL07	CHTAER16ZC

MURATEC
MOD: MD60 - MD120

MODULO MOTORIZZATO ORIENTABILE $\pm 90^\circ$ H=74mm
 $\pm 90^\circ$ adjustable angle driven tool H=74mm
Angetriebenes Werkzeug schwenkbar $\pm 90^\circ$ H=74mm

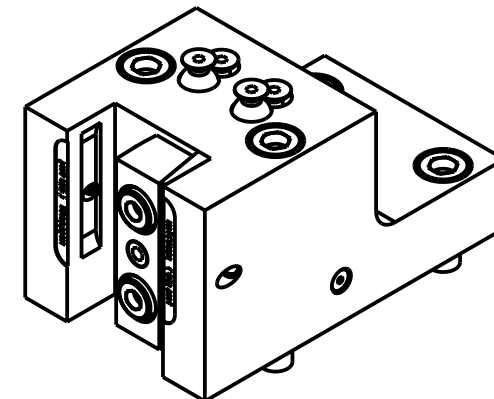
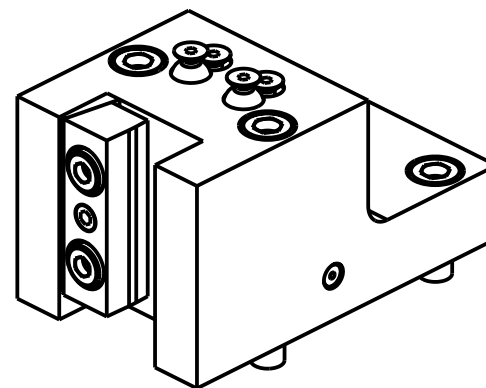
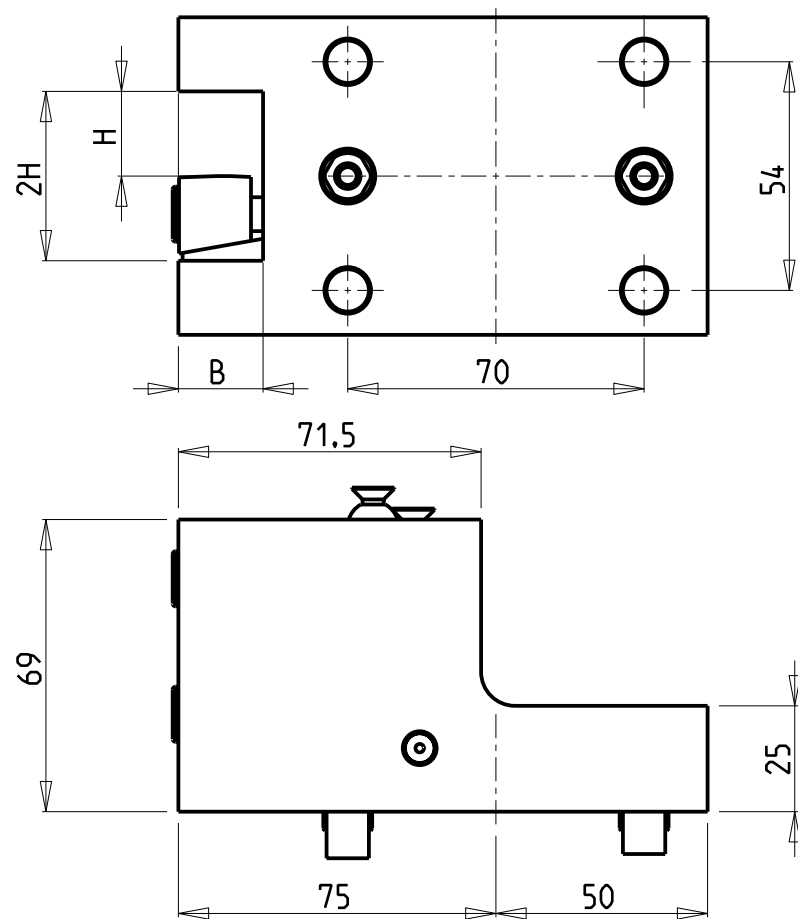
Subject to change without notice.



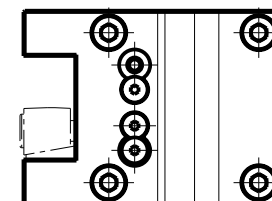
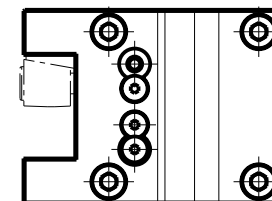
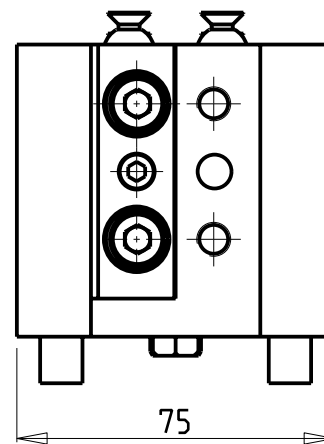
M.T. srl
Via Casino Albini 480
Tel. 0541/956034-957884
Fax 0541/956341
47842 S. GIOVANNI IN M. (RN)
e-mail: mtma@mtmarchetti.com
<http://www.mtmarchetti.com>

PRODUZIONE MODULI ROTANTI

PAGINA MUR335-2-00



MUR0162010



Cod. MT	N°Utensili N°Tools N°Werkzeuge	Lubrificazione int. Coolant through Innenkuehlung	Lubrificazione est. Ext. coolant Aussenkuehlung	Misure Dimensions Masse	B	H
MUR0162000	1	-	X	mm	20	20
MUR0162010	1	P=70bar	X	mm	20	20

NEW

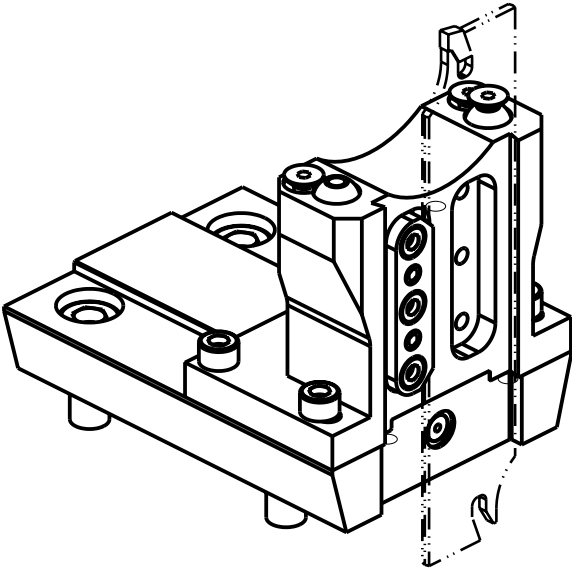
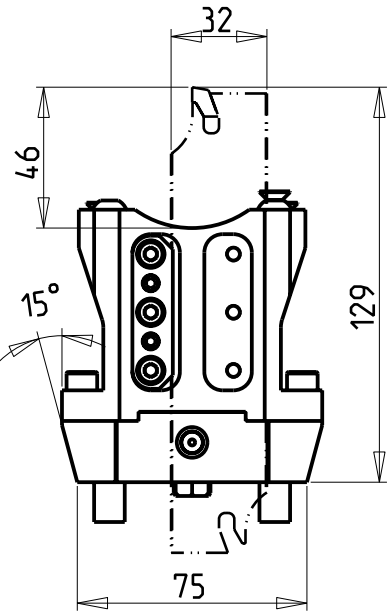
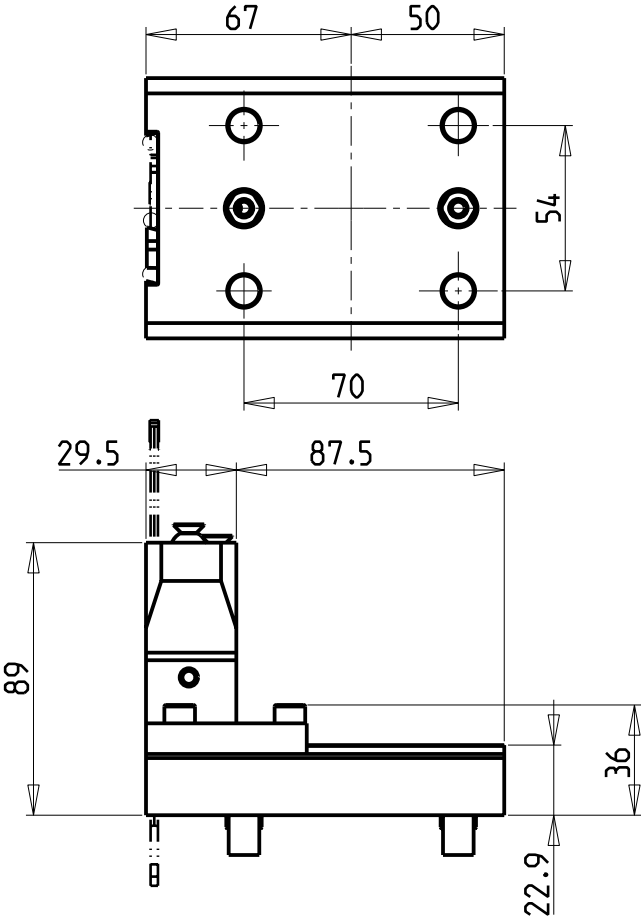
MURATEC
MOD: MD60 - MD120
PORTAUTENSILE RADIALE SINGOLO QD=20mm
Radial single static tool QD=20mm
Radial Single-Werkzeughalter QD=20mm

Subject to change without notice.

M.T. srl
Via Casino Albini 480
Tel. 0541/956034-957884
Fax 0541/956341
47842 S. GIOVANNI IN M. (RN)
e-mail: mtma@mtmarchetti.com
<http://www.mtmarchetti.com>

PRODUZIONE MODULI ROTANTI

PAGINA MUR420-2-00



Cod. MT	N°Utensili N°Tools N°Werkzeuge	Lubr.esterna Ext. coolant Aussenkuehlung
MUR0190132	1	X

POSSIBILITA' DI LAVORO M3/M4
OPTION OF M3/M4 WORKING
ARBEITSMÖGLICHKEIT M3/M4


DOTAZIONI - SUPPLIED WITH - AUSSTATTUNG
N°1 - LAMA - BLADE - KLINGE ISCAR H=32 Sp. 3/4mm (KENNAMETAL OPTIONAL)
N°10 - INSERTI - INSERTS - EINLAGEN
N°1 - CHIAVE A T PER MONTAGGIO INSERTI - T-WRENCH FOR INSERT SET UP - T-SCHLUESSEL FUER EINSATZSTUECK-MONTAGE

MURATEC
MOD: MD60 - MD120
PORTAUTENSILE RADIALE PER LAMA
Radial blade holder
Radial Abstechhalter

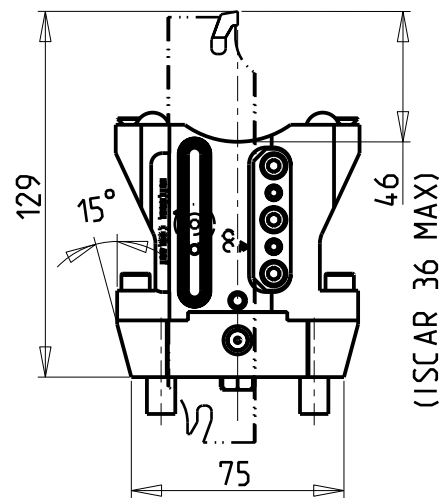
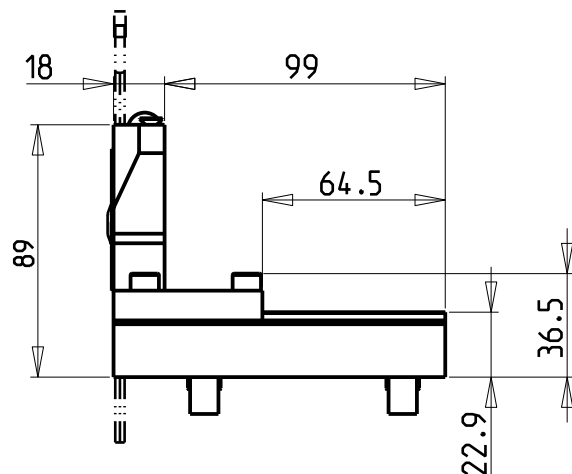
Subject to change without notice.

M.T. srl
Via Casino Albini 480
Tel. 0541/956034-957884
Fax 0541/956341
47842 S. GIOVANNI IN M. (RN)
e-mail: mtma@mtmarchetti.com
<http://www.mtmarchetti.com>

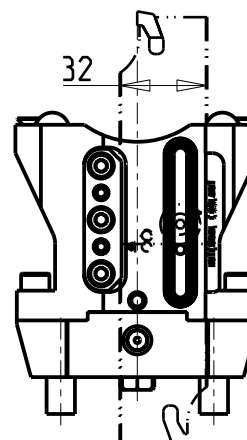
PRODUZIONE MODULI ROTANTI

**MT**

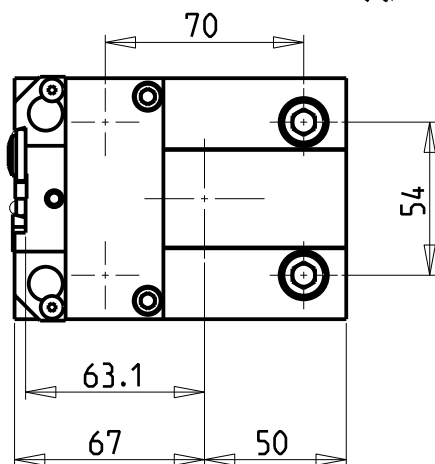
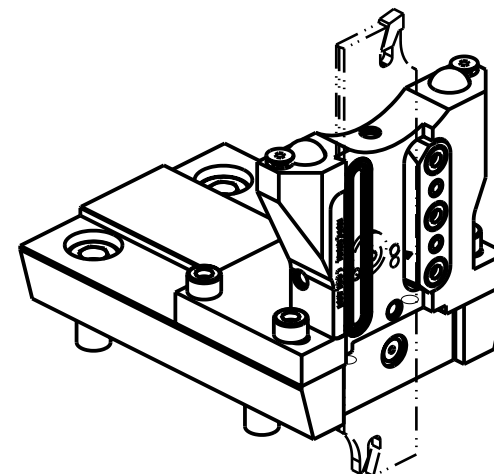
PAGINA MUR520-2-01



versione dx
right version
version rechts



versione sx
left version
version links



**KIT LAME NON INCLUSI (OPZIONALI)
BLADES NOT SUPPLIED WITH (OPTIONAL)
KLINGEN NICHT INBEGRIFFEN (OPTIONAL)**

- LAMA-BLADE-KLINGE SANDVIK H=32 sp.3 cod. QD_NN2G60C25A
+INSERTI-INSERTS-EINLAGEN cod. QD_NG_0300_0002_CM_1145 (10 pz.)
- LAMA-BLADE-KLINGE SANDVIK H=32 sp.4 cod. QD_NN2H60C25A
+INSERTI-INSERTS-EINLAGEN cod. QD_NH_0400_0002_CM_1145 (10 pz.)
- LAMA-BLADE-KLINGE ISCAR H=32 sp.3 cod. SGFH_32K_3
+INSERTI-INSERTS-EINLAGEN cod. 6011365 (10pz.)
- LAMA-BLADE-KLINGE ISCAR H=32 sp.4 cod. SGFH_32K_4
+INSERTI-INSERTS-EINLAGEN cod. 6011366 (10pz.)
- LAMA-BLADE-KLINGE WALTER H=32 sp.3 cod. G2042.32N-3T45SX-P
+INSERTI-INSERTS-EINLAGEN cod. SX-3E300N02-CE4 WSM33S (10pz.) + CHIAVE-KEY cod. FS1494
- LAMA-BLADE-KLINGE WALTER H=32 sp.4 cod. G2042.32N-4T50SX-P
+INSERTI-INSERTS-EINLAGEN cod. SX-4E400N02-CE4 WSM33S (10pz.) + CHIAVE-KEY cod. FS1494

Cod. MT		N°Utensili N°Tools N°Werkzeuge	Lubr.esterna Ext. coolant Aussenkuehlung	Lubr.interna Coolant through Innenkuehlung
versione dx right version version rechts	versione sx left version version links			
MUR0200132R	MUR0200132L	1	X	P=70bar

MURATEC
MOD: MD60 - MD120
PORTAUTENSILE RADIALE PER LAMA CON LUBRIFICAZIONE INTERNA
Radial blade holder with internal coolant
Radial Abstechhalter mit Innenkuehlung

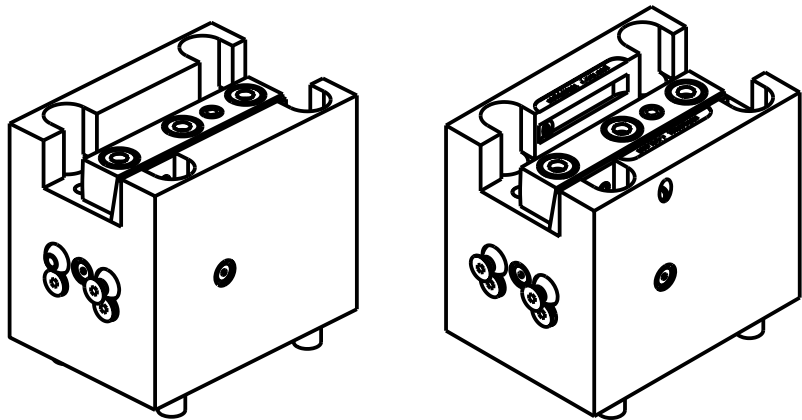
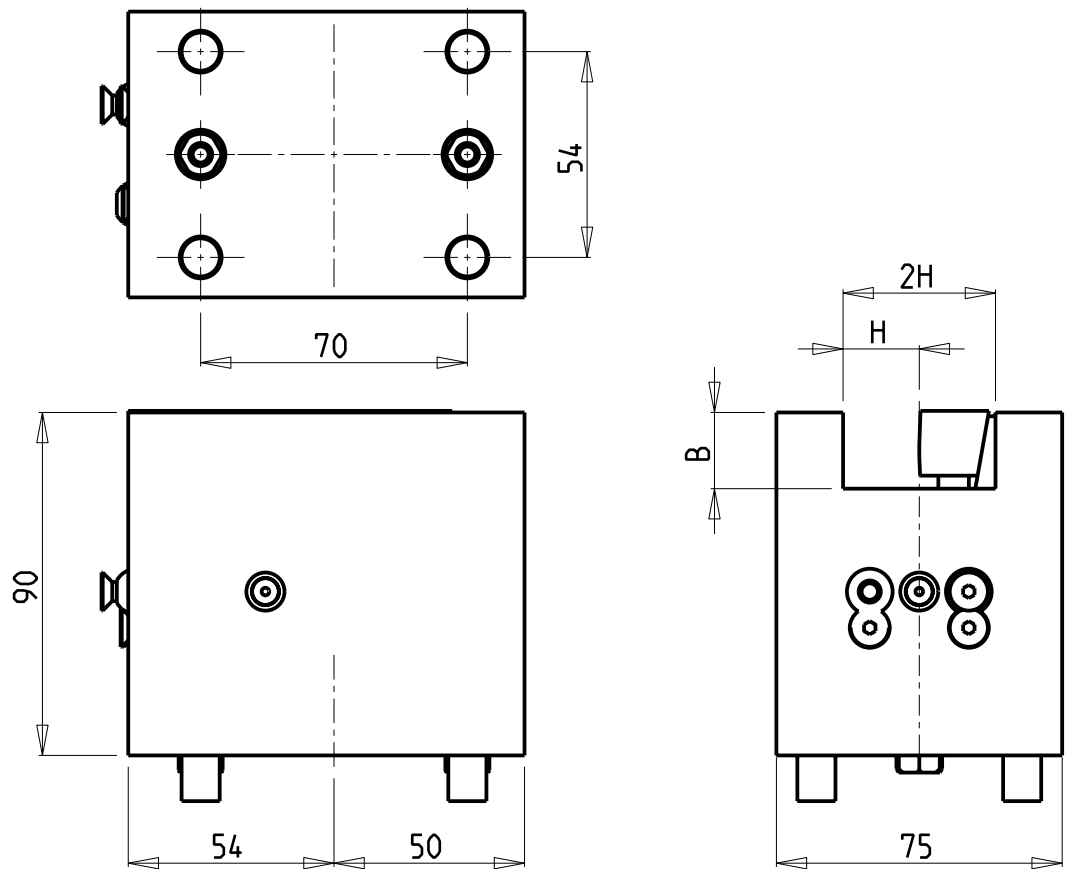
Subject to change without notice.

M.T. srl
Via Casino Albini 480
Tel. 0541/956034-957884
Fax 0541/956341
47842 S. GIOVANNI IN M. (RN)
e-mail: mtma@mtmarchetti.com
<http://www.mtmarchetti.com>

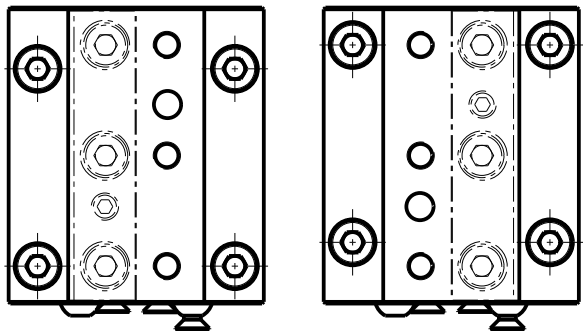
PRODUZIONE MODULI ROTANTI



PAGINA MUR520-2-05



MUR0172010



Cod. MT	N°Utensili N°Tools N°Werkzeuge	Lubrificazione int. Coolant through Innenkuehlung	Lubrificazione est. Ext. coolant Aussenkuehlung	Misure Dimensions Masse	B	H
MUR0172000	1	-	X	mm	20	20
MUR0172010	1	P=70bar	X	mm	20	20

NEW

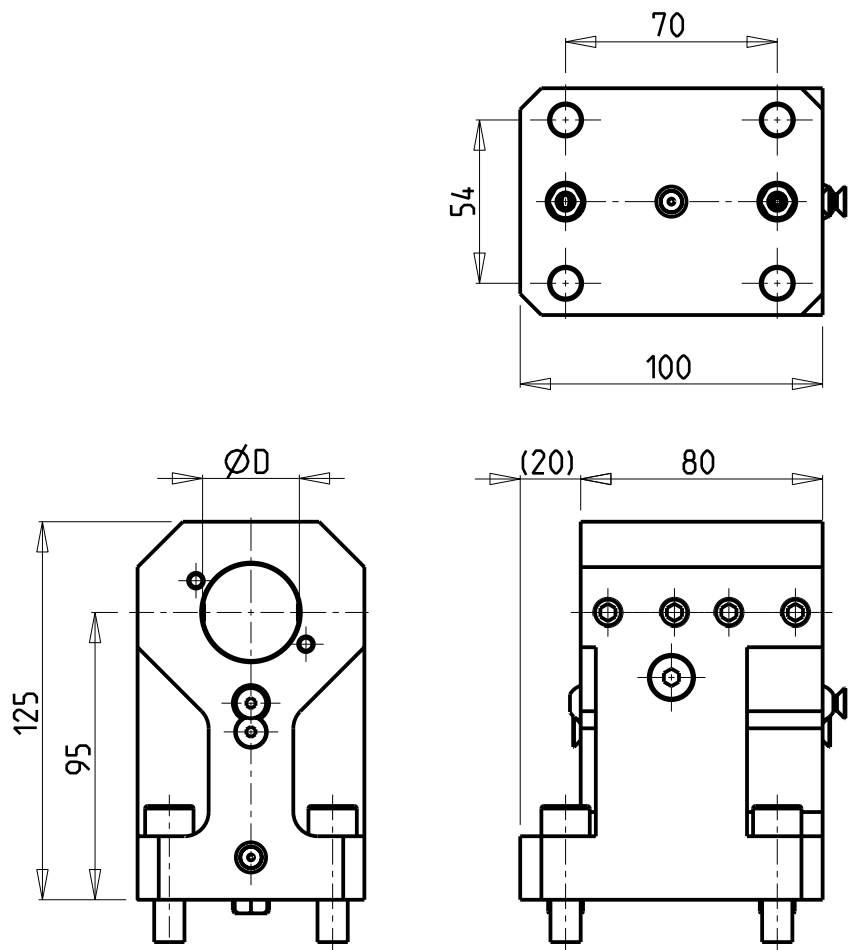
MURATEC
MOD: MD60 - MD120
PORTAUTENSILE ASSIALE SINGOLO QD=20mm
Axial single static tool QD=20mm
Axial Single-Werkzeughalter QD=20mm

Subject to change without notice.

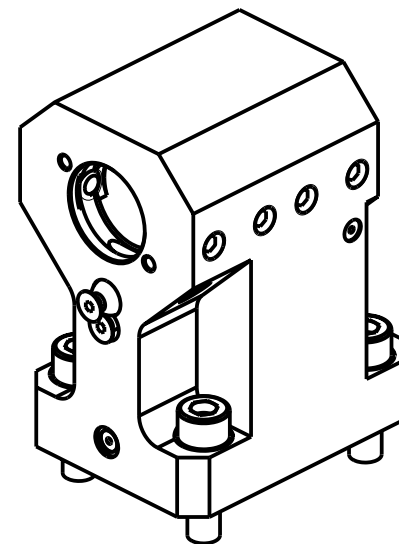
M.T. srl
Via Casino Albini 480
Tel. 0541/956034-957884
Fax 0541/956341
47842 S. GIOVANNI IN M. (RN)
e-mail: mtma@mtmarchetti.com
<http://www.mtmarchetti.com>

PRODUZIONE MODULI ROTANTI

PAGINA MUR550-2-00



KIT ADDUZIONE INTERNA (OPZIONALE)
KIT FOR INTERNAL COOLANT (OPTIONAL)
KIT FÜR INTERNE KUEHLMITTELZUFUHR (OPTIONAL)
Ø32 cod. KIT1000001



PER BOCCOLE DI RIDUZIONE VEDI PAG. TBL150-1-00
FOR REDUCING BUSHINGS SEE PAGE TBL150-1-00
FÜR REDUZIERBUCHSE SIEHE SEITE TBL150-1-00

Cod. MT	N°Utensili N°Tools N°Werkzeuge	Lubrificazione int. opzionale Coolant through optional Innenkuehlung Optional	Lubrificazione est. Ext. coolant Aussenkuehlung	Misure Dimensions Masse	D
MUR0183200	1	X	X	mm	32

MURATEC
MOD: MD60 - MD120
PORTAUTENSILE ASSIALE PER BARENO Ø32mm H=95mm
Axial single boring bar holder Ø32mm H=95mm
Axial Bohrhälter Ø32mm H=95mm

Subject to change without notice.

M.T. srl
Via Casino Albini 480
Tel. 0541/956034-957884
Fax 0541/956341
47842 S. GIOVANNI IN M. (RN)
e-mail: mtma@mtmarchetti.com
<http://www.mtmarchetti.com>

PRODUZIONE MODULI ROTANTI



PAGINA MUR650-2-10

Distributeur/ importateur : Crylax 0033 450 960920 - info@crylax.com