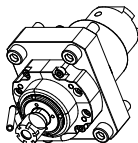
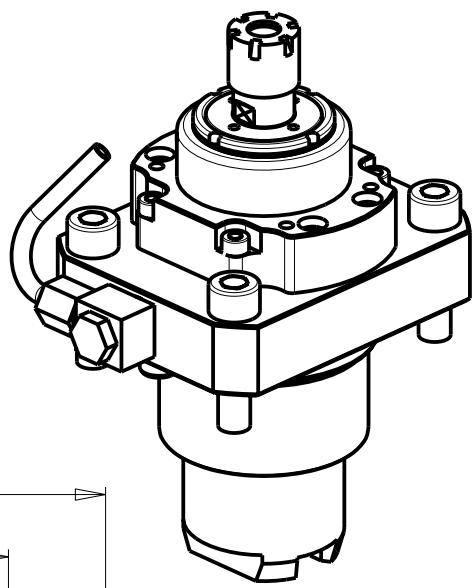
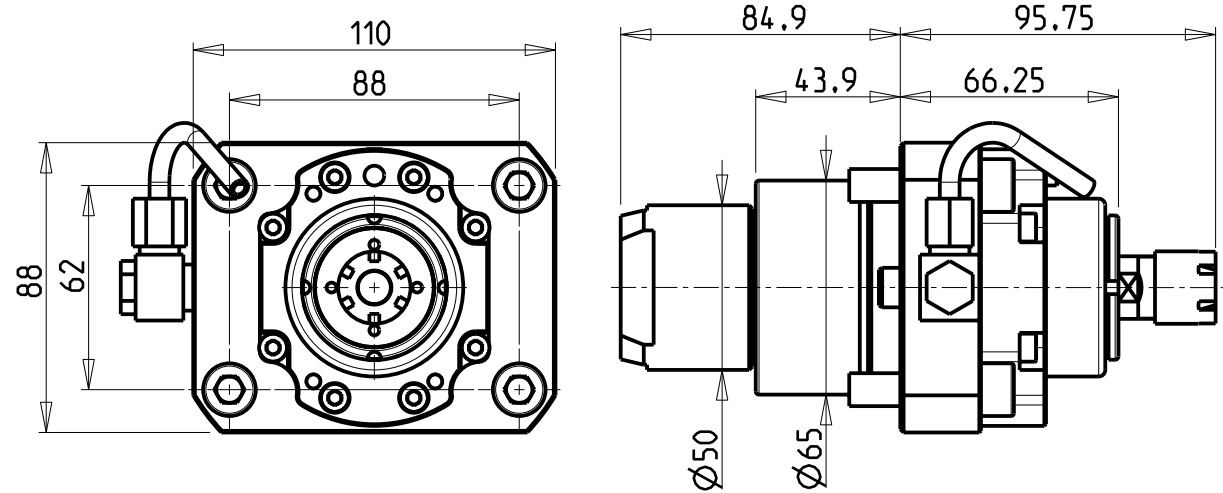


		PAGINA Page Seite
<b>MODULO MOTORIZZATO RADIALE MOLTIPLICATO I = 15,625</b> Radial geared-up I=1:5,625 driven tool Radial angetriebenes Werkzeug uebersetzt I=1:5,625		MYA060.1.00
<b>MODULO MOTORIZZATO ASSIALE MOLTIPLICATO I = 15,625</b> Axial geared-up I=1:5,625 driven tool Axial angetriebenes Werkzeug uebersetzt I=1:5,625		MYA210.1.10
<b>PORTAUTENSILE ASSIALE PER BARENO 2 POSIZIONI Ø 20mm</b> Axial double boring bar holder Ø20mm Axial Bohrhälter 2 Positionen Ø20mm		MYA886.1.00

Distributeur/ importateur : Crylax 0033 450 960920 - [info@crylax.com](mailto:info@crylax.com)



**ATTENZIONE - ATTENTION - ACHTUNG**

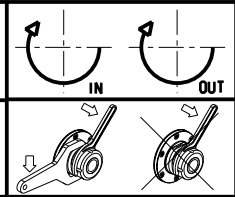
- PRIMA DI UTILIZZARE IL MOTORIZZATO CONSULTARE LE ISTRUZIONI ALLEGATE!
- BEFORE USING THE DRIVEN TOOL, PLEASE CHECK THE ENCLOSED INSTRUCTION SHEET!
- VOR DER BENUTZUNG DES ANGETRIEBENEN WERKZEUGES, DIE BEILIEGENDEN INSTRUKTIONEN DURCHLESEN!

**ATTENZIONE - ATTENTION - ACHTUNG**

- Per lo smontaggio degli utensili utilizzare sempre la chiave di contrasto.
- For disassembly of the tools use always the contrast key.
- Fuer das Abmontieren der Werkzeuge immer den Gegenschlüssel benutzen.


Cod. MT	Mandrino Spindle Spindel	I	RPM	Coppia Max Max Torque Max Drehmoment	Lubrificazione est. Ext. coolant Aussenkuehlung	CHIAVI INCLUSE Keys included Schluessel einbegriffen	
MYA0010016	ER16	1:5.625	22500	6Nm	X	CHUB17	CHMNER16

MIYANO  
MOD: BNE64  
MODULO MOTORIZZATO RADIALE MOLTIPLICATO I=1:5.625  
Radial geared-up I=1:5.625 driven tool  
Radial angetriebenes Werkzeug uebersetzt I=1:5.625  
Subject to change without notice.

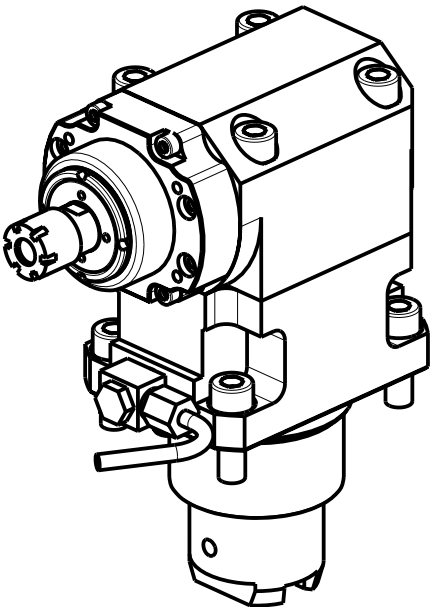
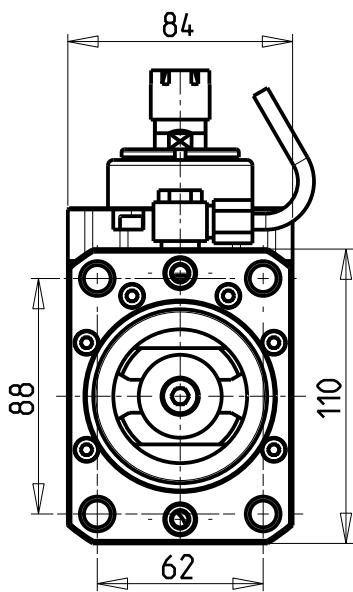
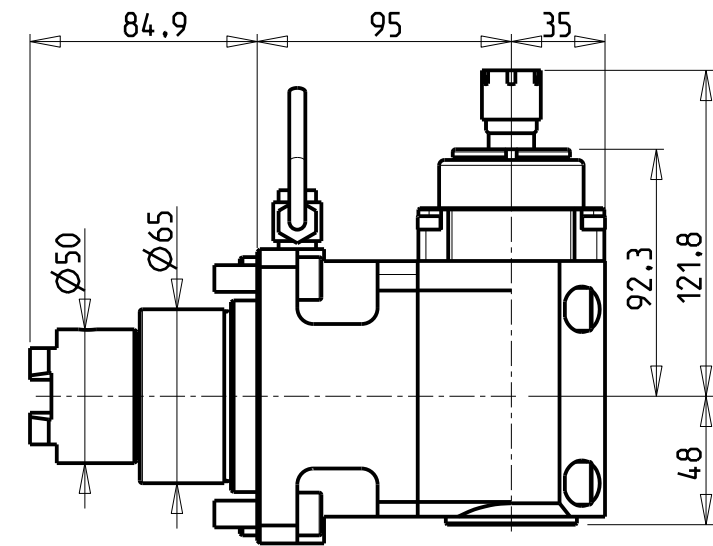


**M.T. srl**  
Via Casino Albini 480  
Tel. 0541/956034-957884  
Fax 0541/956341  
47842 S. GIOVANNI IN M. (RN)  
e-mail: [mfma@mtmarchetti.com](mailto:mfma@mtmarchetti.com)  
<http://www.mtmarchetti.com>

PRODUZIONE MODULI ROTANTI



PAGINA MYA060-1-00



**ATTENZIONE - ATTENTION - ACHTUNG**

- PRIMA DI UTILIZZARE IL MOTORIZZATO CONSULTARE LE ISTRUZIONI ALLEGATE!
- BEFORE USING THE DRIVEN TOOL, PLEASE CHECK THE ENCLOSED INSTRUCTION SHEET!
- VOR DER BENUTZUNG DES ANGETRIEBENEN WERKZEUGES, DIE BEILIEGENDEN INSTRUKTIONEN DURCHLESEN!

**ATTENZIONE - ATTENTION - ACHTUNG**

- Per lo smontaggio degli utensili utilizzare sempre la chiave di contrasto.
- For disassembly of the tools use always the contrast key.
- Fuer das Abmontieren der Werkzeuge immer den Gegenschlüssel benutzen.

Cod. MT	Mandrino Spindle Spindel	I	RPM	Coppia Max Max Torque Max Drehmoment	Reversibile lato mandrino/contromandrino Reversible sub/main spindle side Umkehrbare Spindel-seite/ Gegenspindel-seite	Lubrificazione est. Ext. coolant Aussenkuehlung	CHIAVI INCLUSE Keys included Schlüssel einbegriffen	
MYA0020016	ER16	1:5.625	22500	6Nm	X	X	CHUB17	CHMNER16

MIYANO

MOD: BNE64

MODULO MOTORIZZATO ASSIALE MOLTIPLICATO I=1:5.625

Axial geared-up I=1:5.625 driven tool

Axial angetriebenes Werkzeug uebersetzt I=1:5.625

IN

OUT

M.T. srl

Via Casino Albini 480

Tel. 0541/956034-957884

Fax 0541/956341

47842 S. GIOVANNI IN M. (RN)

e-mail: [mtma@mtmarchetti.com](mailto:mtma@mtmarchetti.com)

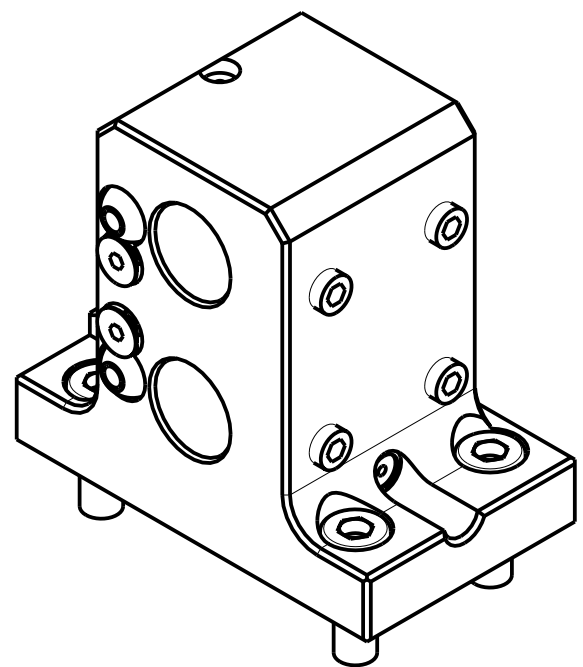
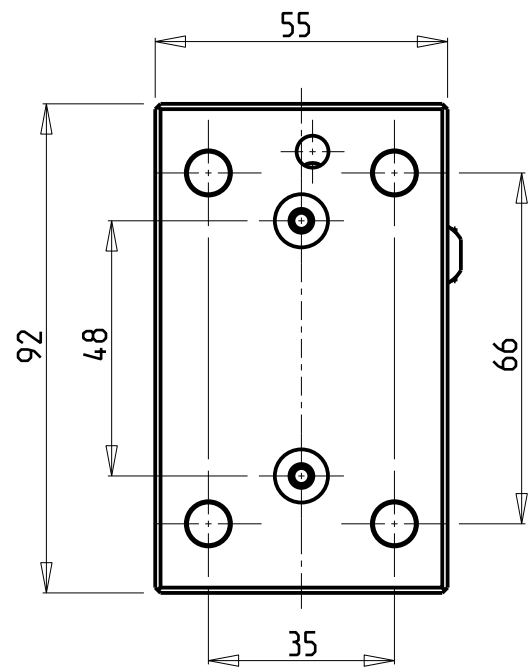
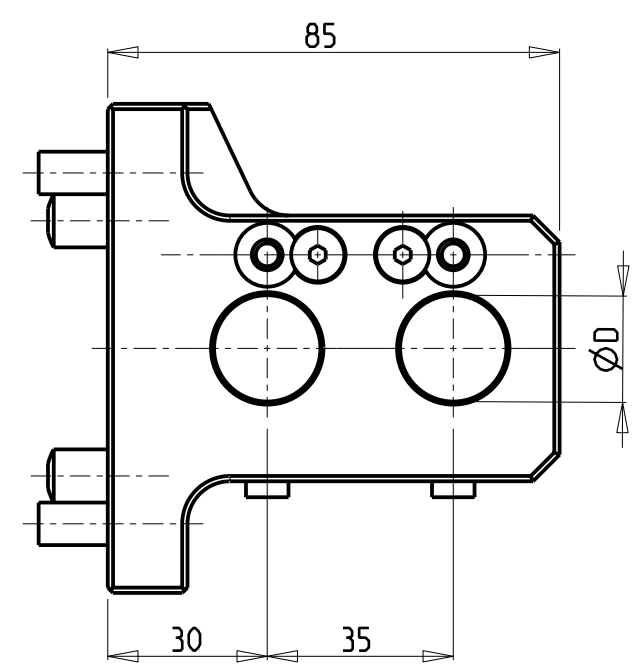
<http://www.mtmarchetti.com>

PRODUZIONE MODULI ROTANTI

PAGINA MYA210-1-10

Subject to change without notice.

09/2019




PER BOCCOLE DI RIDUZIONE VEDI PAG. TBL102-00  
FOR REDUCING BUSHINGS SEE PAGE TBL102-00  
FÜR REDUZIERBUCHSE SIEHE SEITE TBL102-00

Cod. MT	N°Utensili N°Tools N°Werkzeuge	Lubrificazione est. Ext. coolant Aussenkühlung	Misure Dimensions Masse	D
MYA0032000	2	X	mm	20

MIYANO  
MOD: BNE64  
PORTAUTENSILE ASSIALE PER BARENO 2 POSIZIONI  $\varnothing 20$ mm  
Axial double boring bar holder  $\varnothing 20$ mm  
Axial Bohrhälter 2 Positionen  $\varnothing 20$ mm  
Subject to change without notice.

**M.T. srl**  
Via Casino Albini 480  
Tel. 0541/956034-957884  
Fax 0541/956341  
47842 S. GIOVANNI IN M. (RN)  
e-mail: [mtma@mtmarchetti.com](mailto:mtma@mtmarchetti.com)  
<http://www.mtmarchetti.com>

PRODUZIONE MODULI ROTANTI



PAGINA MYA886-1-00

Distributeur/ importateur : Crylax 0033 450 960920 - [info@crylax.com](mailto:info@crylax.com)