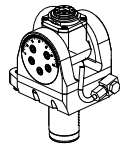
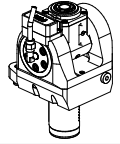
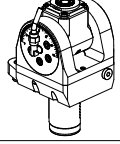
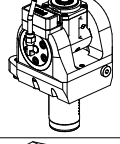
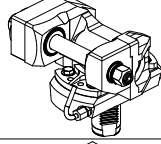
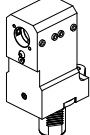
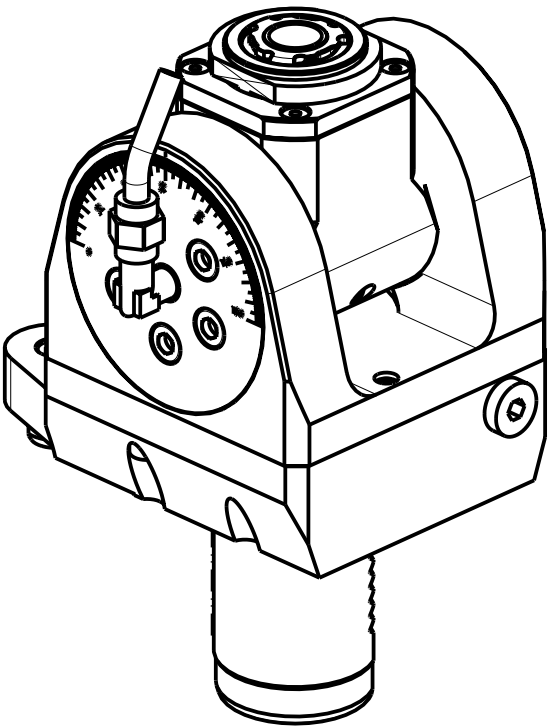
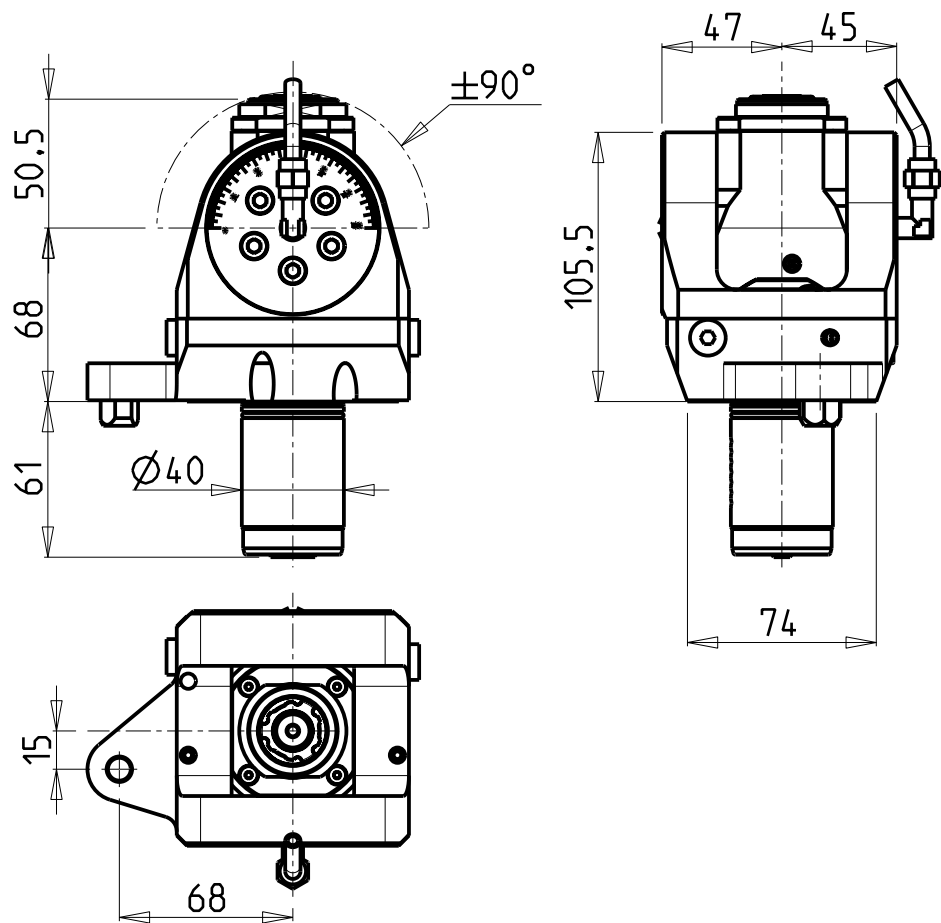


		PAGINA Page Seite
MODULO MOTORIZZATO ORIENTABILE $\pm 90^\circ$ $\pm 90^\circ$ adjustable angle driven tool Angetriebenes Werkzeug schwenkbar $\pm 90^\circ$		MZK335.2.00
MODULO MOTORIZZATO ORIENTABILE $\pm 90^\circ$ CON NONIO DIGITALE $\pm 90^\circ$ adjustable angle driven tool with digital display Angetriebenes Werkzeug schwenkbar $\pm 90^\circ$ mit digital display		MZK335.2.01
MODULO MOTORIZZATO ORIENTABILE $\pm 90^\circ$ MOLTIPLICATO 1:1.2 $\pm 90^\circ$ adjustable angle driven tool geared-up 1:1.2 Angetriebenes Werkzeug schwenkbar $\pm 90^\circ$ uebersetzt 1:1.2		MZK336.2.00
MODULO MOTOR. ORIENTABILE $\pm 90^\circ$ MOLTIPL. 1:1.2 CON NONIO DIGITALE $\pm 90^\circ$ adjustable angle driven tool geared-up 1:1.2 with digital display Angetriebenes Werkzeug schwenkbar $\pm 90^\circ$ uebersetzt 1:1.2 mit digital display		MZK336.2.01
MODULO MOTORIZZATO PORTACREATORE Driven gear hobber Angetriebenes Zahnradwaelzfraes-Werkzeug		MZK340.2.00
PORTAUTENSILE ASSIALE PER BARENO $\varnothing 32\text{mm}$ / $\varnothing 1\frac{1}{4}"$ H=130mm Axial single boring bar holder $\varnothing 32\text{mm}$ / $\varnothing 1\frac{1}{4}"$ H=130mm Axial Bohrhälter $\varnothing 32\text{mm}$ / $\varnothing 1\frac{1}{4}"$ H=130mm		MZK650.2.10

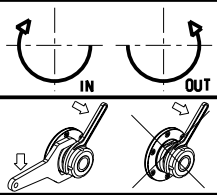
Distributeur/ importateur : Crylax 0033 450 960920 - info@crylax.com



Cod. MT	Mandrino Spindle Spindel	I	RPM	Coppia Max Max Torque Max Drehmoment	Lubrificazione int. Coolant through Innenkuehlung	Lubrificazione est. Ext. coolant Aussenkuehlung	CHIAVI INCLUSE Keys included Schluessel inbegriffen		
MZK0260120	ER A 20	1:1	6000	30Nm	-	X	CHUB36	CHUB22	CHTAER20ZC
MZK0260220	ER A 20	1:1	6000	30Nm	P=70bar	X	CHUB36	CHUB22	CHTAER20ZC


MAZAK
SQT 15-18M/MS/MY/MSY 16 STAZ. - QT NEXUS 200-250M/MS/MY/MSY 16 STAZ. - QT NEXUS 200II-250II M/MS/MY/MSY 16 STAZ.
QT NEXUS 100-150M/MS 12 STAZ. - QT NEXUS 100II M/MS - SQT100M/MS/MY/MSY - SQT10M/MS 12 STAZ. - SQT200-250M/MS/MY/MSY 16 ST.
MODULO MOTORIZZATO ORIENTABILE ±90°
±90° adjustable angle driven tool
Angetriebenes Werkzeug schwenkbar ±90°

Subject to change without notice.

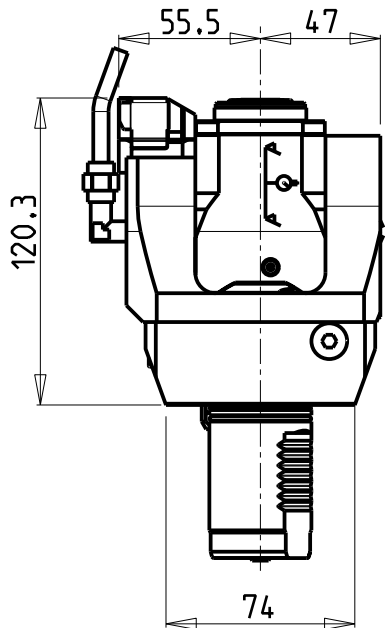
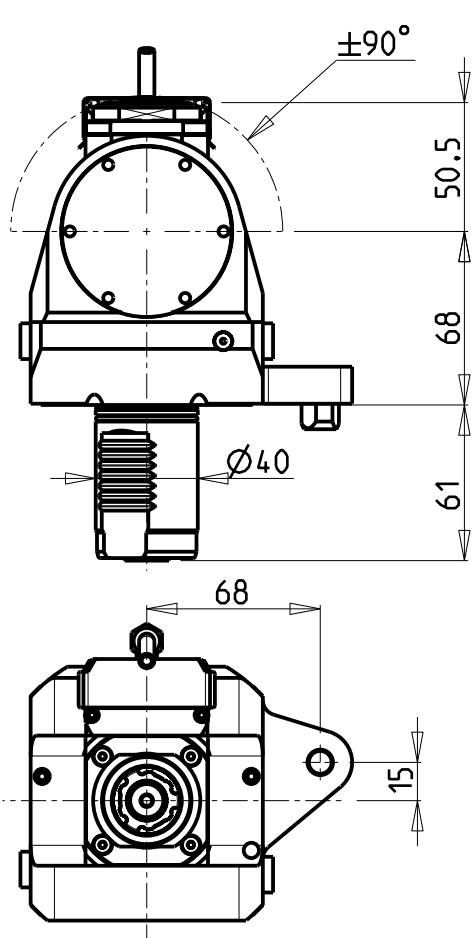


M.T. srl
Via Casino Albini 480
Tel. 0541/956034-957884
Fax 0541/956341
47842 S. GIOVANNI IN M. (RN)
e-mail: mtma@mtmarchetti.com
<http://www.mtmarchetti.com>

PRODUZIONE MODULI ROTANTI

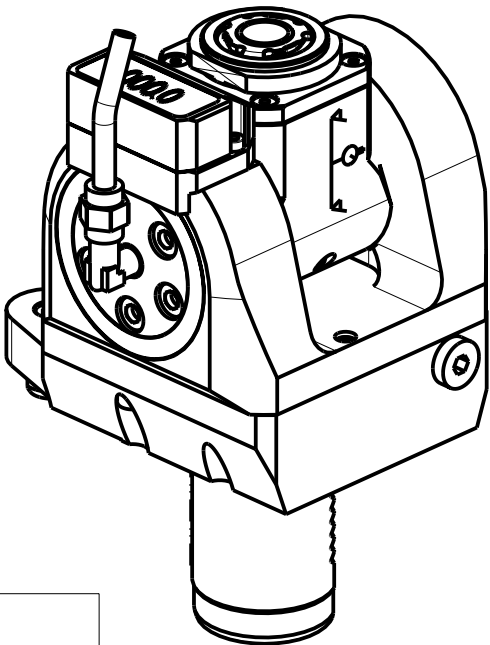


PAGINA MZK335-2-00



ATTENZIONE - ATTENTION - ACHTUNG

- Per lo smontaggio degli utensili utilizzare sempre la chiave di contrasto come indicato nel manuale d'uso.
- For disassembly of the tools use always the contrast key as mentioned in the user instructions.
- Fuer das Abmontieren der Werkzeuge immer den Gegenschlüssel benutzen wie in der Bedienungsanleitung erwaeht.

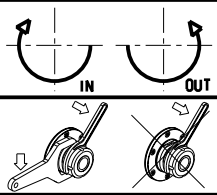


Cod. MT	Mandrino Spindle Spindel	I	RPM	Coppia Max Max Torque Max Drehmoment	Lubrificazione int. Coolant through Innenkuehlung	Lubrificazione est. Ext. coolant Aussenkuehlung	CHIAVI INCLUSE Keys included Schluessel inbegriffen		
MZK0265120	ER A 20	1:1	6000	30Nm	-	X	CHUB36	CHUB22	CHTAER20ZC
MZK0265220	ER A 20	1:1	6000	30Nm	P=70bar	X	CHUB36	CHUB22	CHTAER20ZC

MAZAK
SQT 15-18M/MS/MY/MSY 16 STAZ. - QT NEXUS 200-250M/MS/MY/MSY 16 STAZ. - QT NEXUS 20011-25011 M/MS/MY/MSY 16 STAZ.
QT NEXUS 100-150M/MS 12 STAZ. - QT NEXUS 10011 M/MS - SQT100M/MS/MY/MSY - SQT10M/MS 12 STAZ. - SQT200-250M/MS/MY/MSY 16 ST.

MODULO MOTORIZZATO ORIENTABILE ±90° CON NONIO DIGITALE
±90° adjustable angle driven tool with digital display
Angetriebenes Werkzeug schwenkbar ±90° mit digital display

Subject to change without notice.

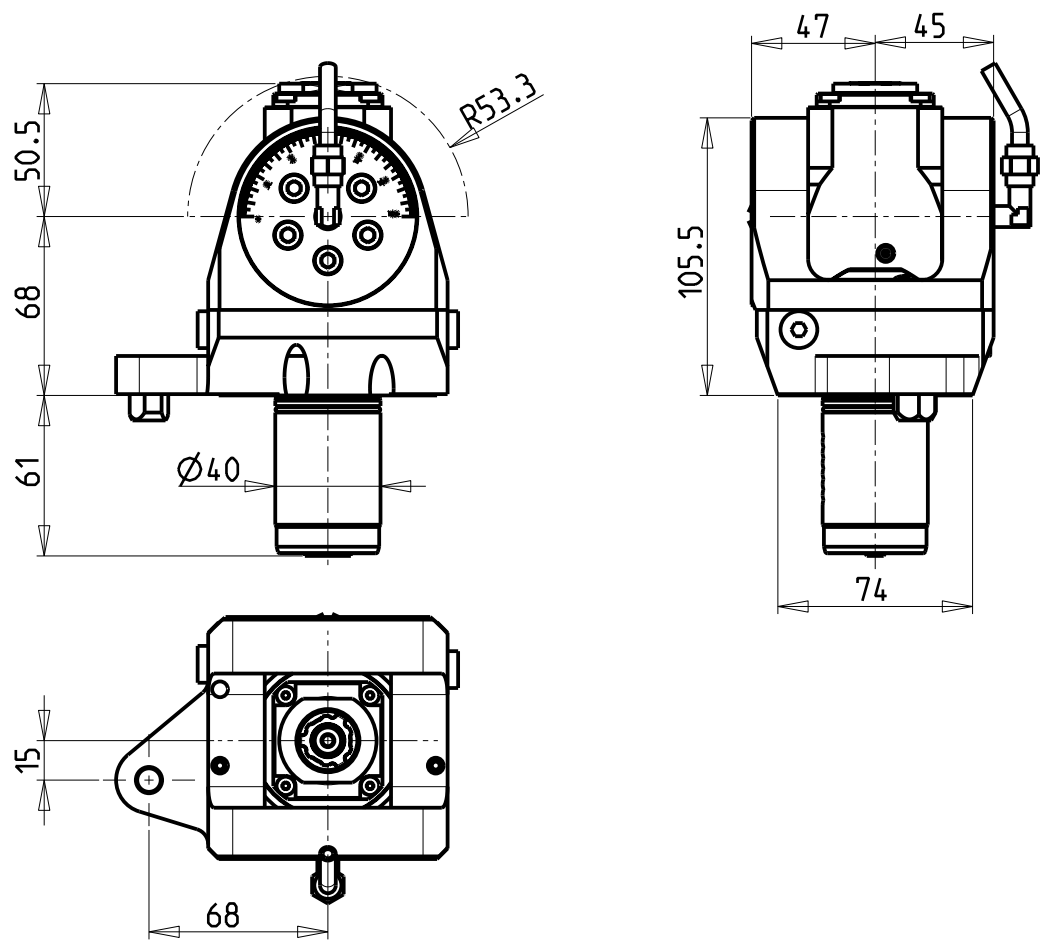


M.T. srl
Via Casino Albini 480
Tel. 0541/956034-957884
Fax 0541/956341
47842 S. GIOVANNI IN M. (RN)
e-mail: mtma@mtmarchetti.com
<http://www.mtmarchetti.com>

PRODUZIONE MODULI ROTANTI

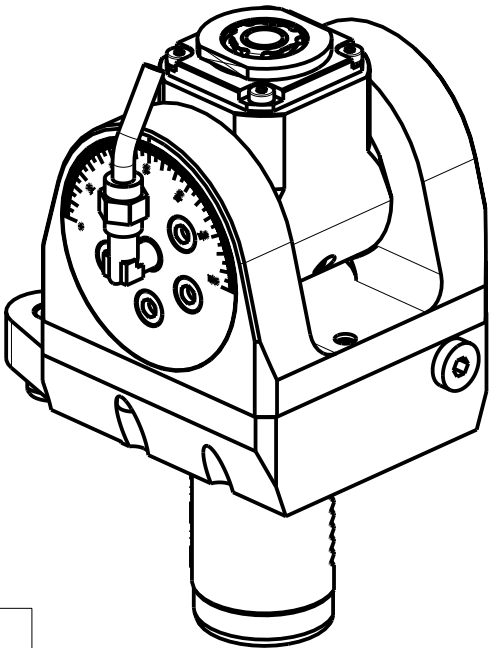


PAGINA MZK335-2-01



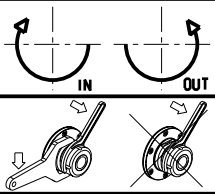
ATTENZIONE - ATTENTION - ACHTUNG

- Per lo smontaggio degli utensili utilizzare sempre la chiave di contrasto come indicato nel manuale d'uso.
- For disassembly of the tools use always the contrast key as mentioned in the user instructions.
- Fuer das Abmontieren der Werkzeuge immer den Gegenschlüssel benutzen wie in der Bedienungsanleitung erwaeht.




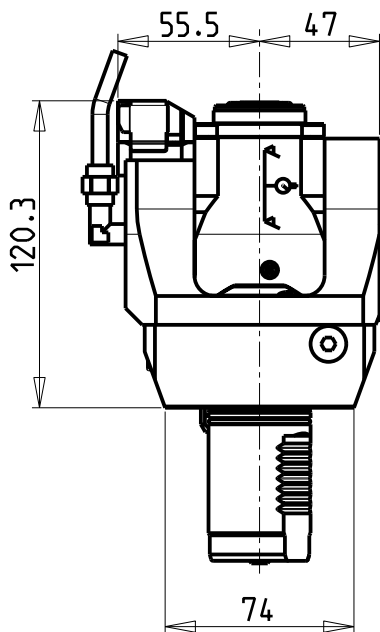
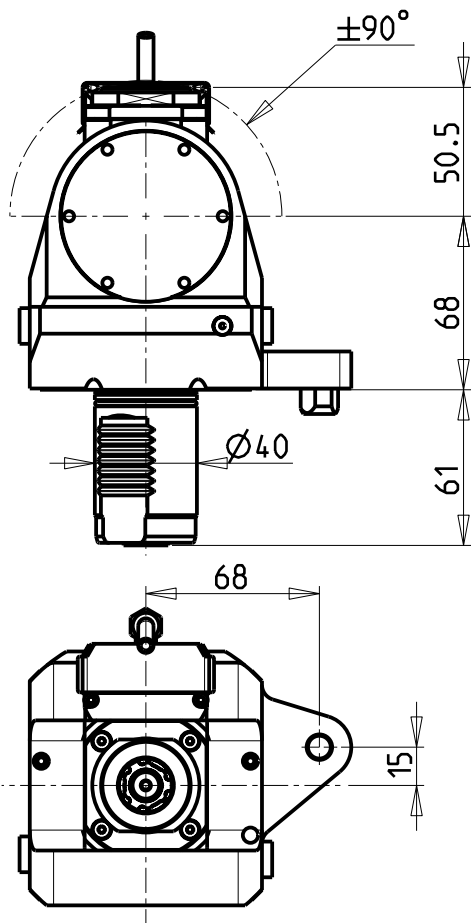
Cod. MT	Mandrino Spindle Spindel	I	RPM	Coppia Max Max Torque Max Drehmoment	Lubrificazione int. Coolant through Innenkuehlung	Lubrificazione est. Ext. coolant Aussenkuehlung	CHIAVI INCLUSE Keys included Schluessel inbegriffen		
MZK0260316	ERA16	1:2	12000	8Nm	-	X	CHUB19_SP3	CHUB32	CHTAER16ZC
MZK0260416	ERA16	1:2	12000	8Nm	P=70bar	X	CHUB19_SP3	CHUB32	CHTAER16ZC

MAZAK
SQT 15-18M/MS/MY/MSY 16 STAZ. - QT NEXUS 200-250M/MS/MY/MSY 16 STAZ. - QT NEXUS 20011-25011 M/MS/MY/MSY 16 STAZ.
QT NEXUS 100-150M/MS 12 STAZ. - QT NEXUS 10011 M/MS - SQT100M/MS/MY/MSY - SQT10M/MS 12 STAZ. - SQT200-250M/MS/MY/MSY 16 ST.
MODULO MOTORIZZATO ORIENTABILE +/-90° MOLTIPLICATO 1=1:2
+/-90° adjustable angle driven tool geared-up 1=1:2
Angetriebenes Werkzeug schwenkbar +/-90° uebersetzt 1=1:2



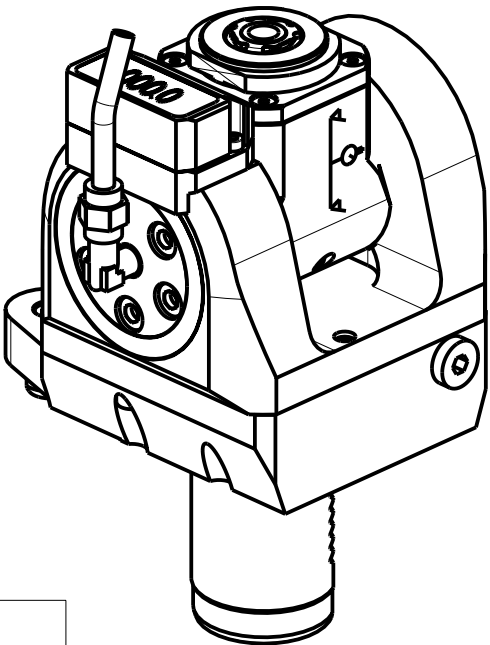
M.T. srl
Via Casino Albini 480
Tel. 0541/956034-957884
Fax 0541/956341
47842 S. GIOVANNI IN M. (RN)
e-mail: mtma@mtmarchetti.com
<http://www.mtmarchetti.com>

PRODUZIONE MODULI ROTANTI

PAGINA MZK336-2-00



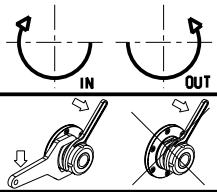
ATTENZIONE - ATTENTION - ACHTUNG

- Per lo smontaggio degli utensili utilizzare sempre la chiave di contrasto come indicato nel manuale d'uso.
- For disassembly of the tools use always the contrast key as mentioned in the user instructions.
- Fuer das Abmontieren der Werkzeuge immer den Gegenschlüssel benutzen wie in der Bedienungsanleitung erwaeht.




Cod. MT	Mandrino Spindle Spindel	I	RPM	Coppia Max Max Torque Max Drehmoment	Lubrificazione int. Coolant through Innenkuehlung	Lubrificazione est. Ext. coolant Aussenkuehlung	CHIAVI INCLUDE Keys included Schluessel inbegriffen		
MZK0265316	ERA16	1:2	12000	8Nm	-	X	CHUB19_SP3	CHUB32	CHTAER16ZC
MZK0265416	ERA16	1:2	12000	8Nm	P=70bar	X	CHUB19_SP3	CHUB32	CHTAER16ZC

MAZAK
SQT 15-18M/MS/MY/MSY 16 STAZ. - QT NEXUS 200-250M/MS/MY/MSY 16 STAZ. - QT NEXUS 20011-25011 M/MS/MY/MSY 16 STAZ.
QT NEXUS 100-150M/MS 12 STAZ. - QT NEXUS 10011 M/MS - SQT100M/MS/MY/MSY - SQT10M/MS 12 STAZ. - SQT200-250M/MS/MY/MSY 16 ST.
MODULO MOTORIZZATO ORIENTABILE $\pm 90^\circ$ MOLTIPLICATO 1=1:2 CON NONIO DIGITALE
+/-90° adjustable angle driven tool geared-up 1=1:2 with digital display
Angetriebenes Werkzeug schwenkbar +/-90° uebersetzt 1=1:2 mit digital display

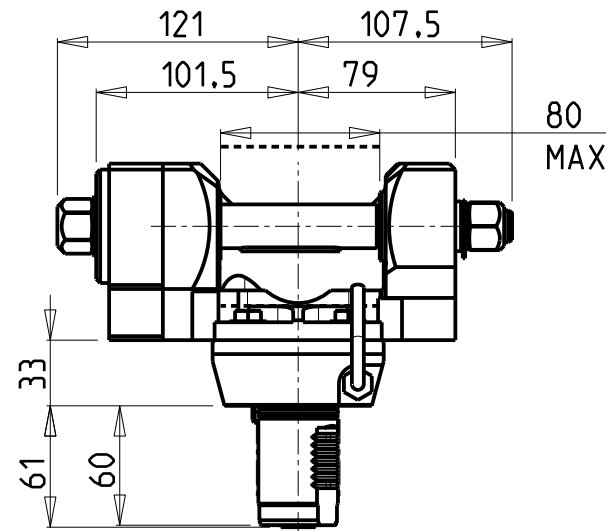
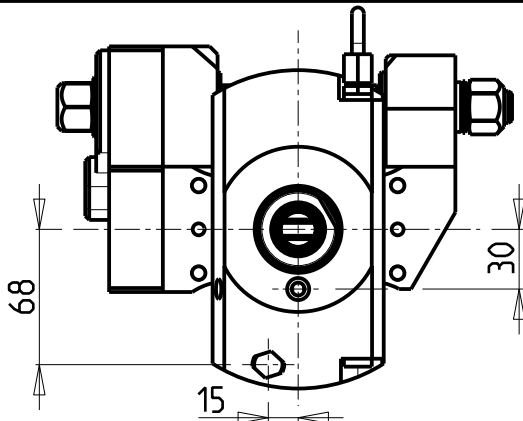
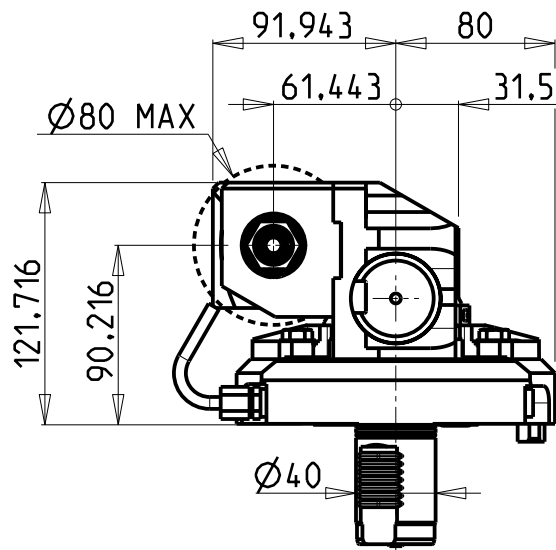


M.T. srl
Via Casino Albini 480
Tel. 0541/956034-957884
Fax 0541/956341
47842 S. GIOVANNI IN M. (RN)
e-mail: mtma@mtmarchetti.com
<http://www.mtmarchetti.com>

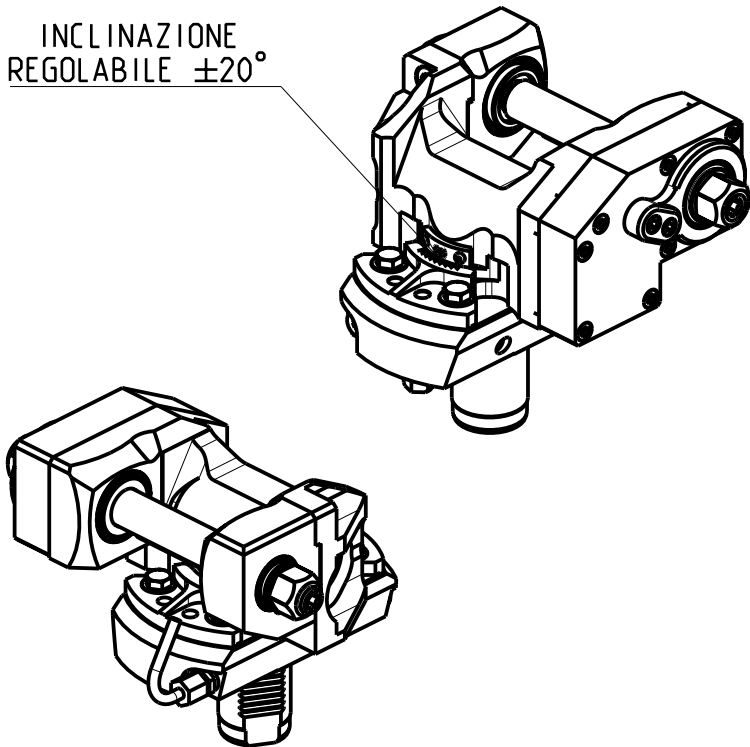
PRODUZIONE MODULI ROTANTI

PAGINA MZK336-2-01

DOTAZIONI - SUPPLIED WITH - AUSSTATTUNG

- mm / inch
- N°1 ALBERO + DISTANZIALI
 - N°1 SHAFT + SPACER
 - N°1 DORN + ABSTANDSSTUECK



INCLINAZIONE
REGOLABILE $\pm 20^\circ$



PER ALBERI E DISTANZIALI VEDI PAG. TBL250-1-00
FOR SHAFT END SPACER SEE PAGE TBL250-1-00
FÜR DORN UND ABSTANDSSTUECK SEITE TBL250-1-00

Cod. MT	I	RPM max	Coppia Max Max Torque Max Drehmoment	Lubrificazione est. Ext. coolant Aussenkuehlung	D (mm)	D (Inch)	CHIAVI INCLUSE Keys included Schlüssel inbegriffen		
MZK0351100	1:1	6000	60Nm	X	16-22-27-32	3/4"-1"-1 1/4"	CHUB24	CHUB13	CHESL08
MZK0352100	2:1	3000	80Nm	X	16-22-27-32	3/4"-1"-1 1/4"	CHUB24	CHUB13	CHESL08

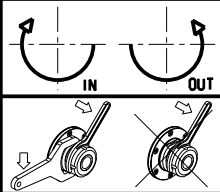
MAZAK

SQT 15-18M/MS/MY/MSY 16 STAZ. - QT NEXUS 200-250M/MS/MY/MSY 16 STAZ. - QT NEXUS 20011-25011 M/MS/MY/MSY 16 STAZ.
QT NEXUS 100-150M/MS 12 STAZ. - QT NEXUS 10011 M/MS - SQT100M/MS/MY/MSY - SQT10M/MS 12 STAZ. - SQT200-250M/MS/MY/MSY 16 ST.

MODULO MOTORIZZATO PORTACREATORE

Driven gear hobber

Angetriebenes Zahnradwaelzfraes-Werkzeug



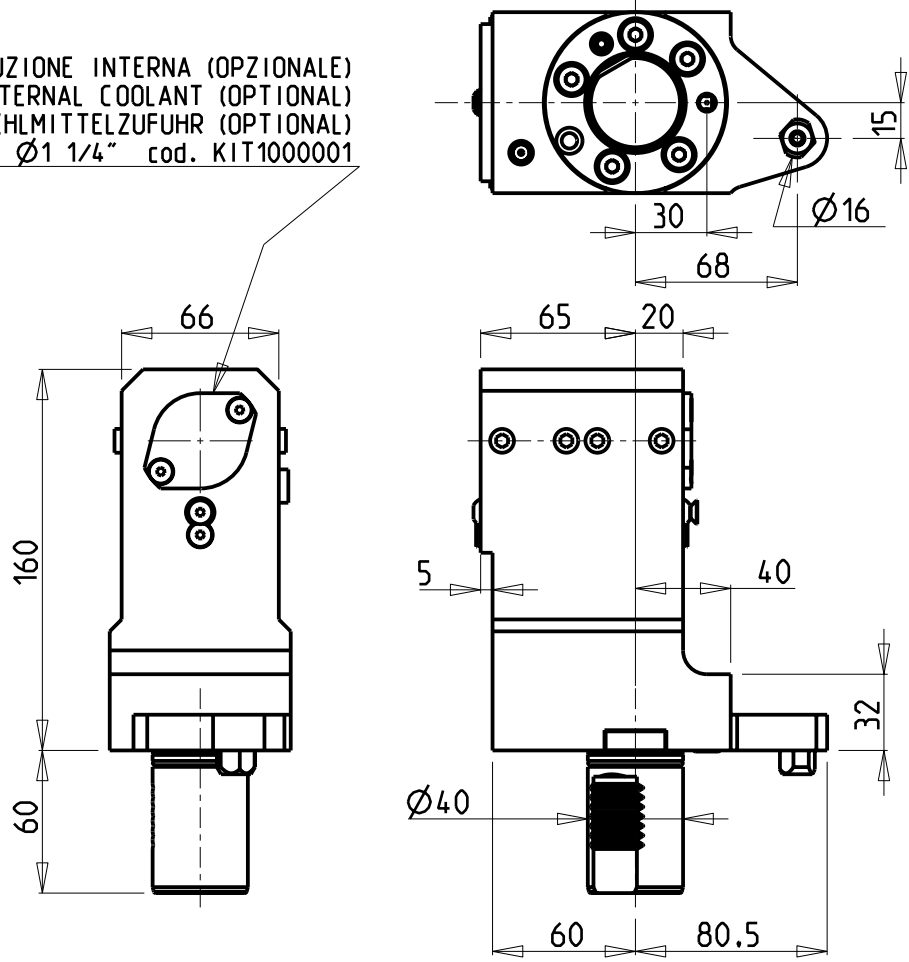
M.T. srl

Via Casino Albini 480
Tel. 0541/956034-957884
Fax 0541/956341
47842 S. GIOVANNI IN M. (RN)
e-mail: mtma@mtmarchetti.com
<http://www.mtmarchetti.com>

PRODUZIONE MODULI ROTANTI

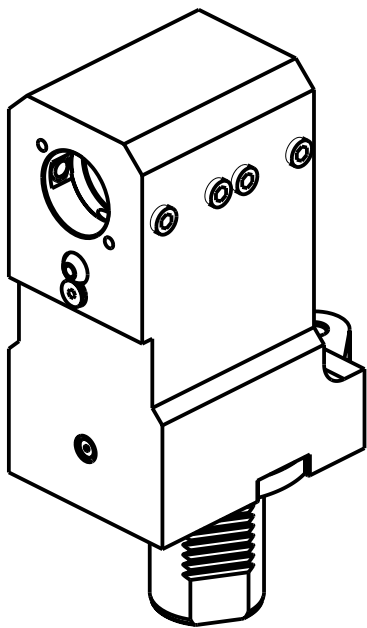
PAGINA MZK340-2-00

KIT ADDUZIONE INTERNA (OPZIONALE)
KIT FOR INTERNAL COOLANT (OPTIONAL)
KIT FUER INTERNE KUEHLMITTELZUFUHR (OPTIONAL)
Ø32 - Ø1 1/4" cod. KIT1000001



ATTENZIONE - ATTENTION - ACHTUNG

- VERIFICARE LE MISURE DI INGOMBRO PER POSSIBILE INTERFERENZA SU ALCUNI MODELLI DI MACCHINE
- Please check the overall sizes for possible interferences on some machine models
- Bitte überprüfen sie das ausmass um mögliche interferenzen auf einigen maschinen modellen zu vermeiden



Cod. MT	N°Utensili N°Tools N°Werkzeuge	Lubrificazione int. opzionale Coolant through optional Innenkühlung Optional	Lubrificazione est. Ext. coolant Aussenkühlung	Misure Dimensions Masse	D
MZK0653200	1	X	X	mm	32
MZK0653175	1	X	X	inch	1 1/4"

PER BOCCOLE DI RIDUZIONE VEDI PAG. TBL150-1-00
FOR REDUCING BUSHINGS SEE PAGE TBL150-1-00
FÜR REDUZIERBUCHSE SIEHE SEITE TBL150-1-00

MAZAK
SQT 15-18M/MS/MY/MSY 16 STAZ. - QT NEXUS 200-250M/MS/MY/MSY 16 STAZ. - QT NEXUS 20011-25011 M/MS/MY/MSY 16 STAZ.
QT NEXUS 100-150M/MS 12 STAZ. - SQT100M/MS/MY/MSY - SQT10M/MS 12 STAZ. - SQT200-250M/MS/MY/MSY 16 ST.
PORTAUTENSILE ASSIALE PER BARENO Ø32mm / Ø1 1/4" H=130mm
Axial single boring bar holder Ø32mm / Ø1 1/4" H=130mm
Axial Bohrhälter Ø32mm / Ø1 1/4" H=130mm

Subject to change without notice.

M.T. srl
Via Casino Albini 480
Tel. 0541/956034-957884
Fax 0541/956341
47842 S. GIOVANNI IN M. (RN)
e-mail: mtma@mtmarchetti.com
<http://www.mtmarchetti.com>

PRODUZIONE MODULI ROTANTI

PAGINA MZK650-2-10