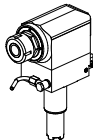

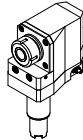
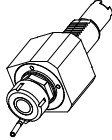
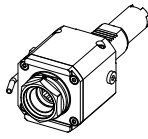
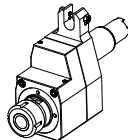
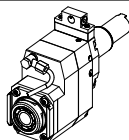
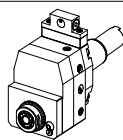

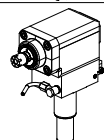
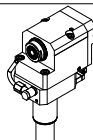
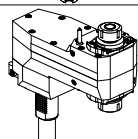
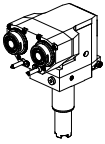


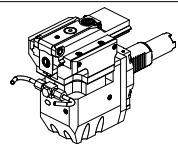
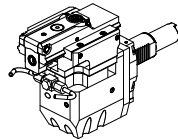
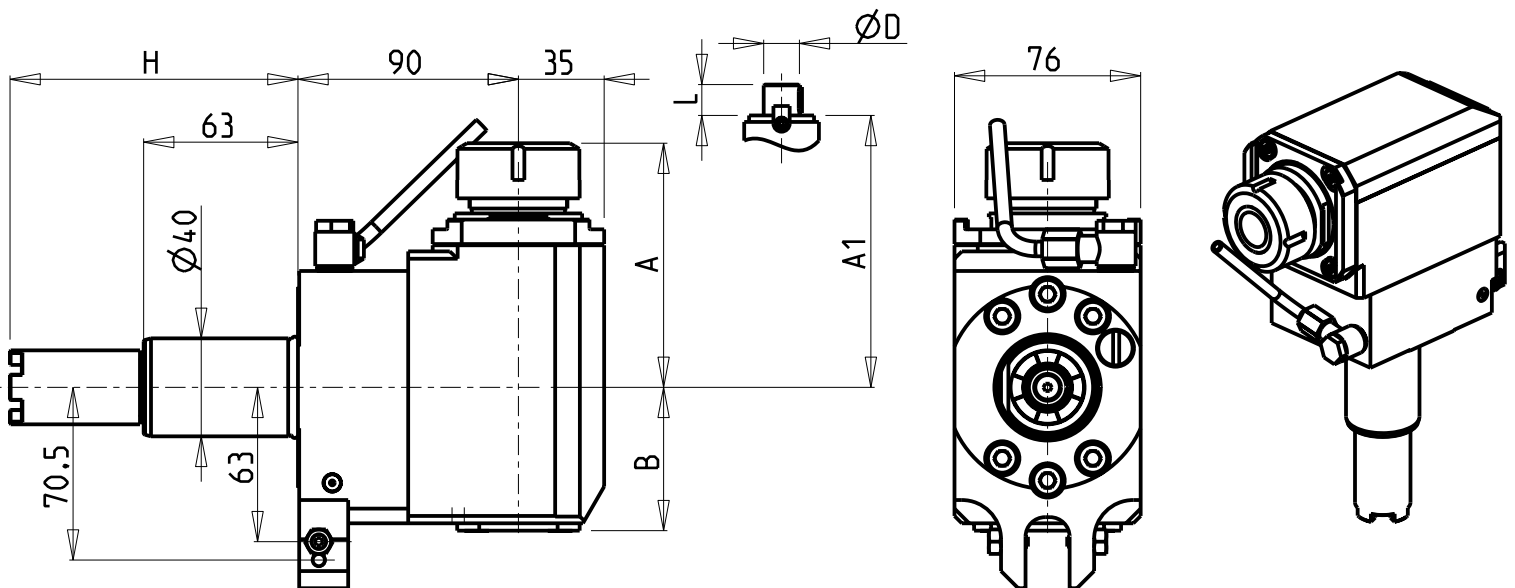


		PAGINA Page Seite
<b>MODULO MOTORIZZATO RADIALE VD140</b> Radial driven tool VD140 Radial angetriebenes Werkzeug VD140		HAS013.3.20
<b>MODULO MOTORIZZATO RADIALE MTSK VD140</b> Radial MTSK driven tool VD140 Radial MTSK angetriebenes Werkzeug VD140		HAS013.3.20.K
<b>MODULO MOTORIZZATO RADIALE ARRETRATO VD140</b> Radial rear-set driven tool VD140 Radial angetriebenes Werkzeug zurueckversetzt VD140		HAS015.3.00
<b>MODULO MOTORIZZATO ASSIALE VD140</b> Axial driven tool VD140 Axial angetriebenes Werkzeug VD140		HAS150.3.10
<b>MODULO MOTORIZZATO ASSIALE MTSK VD140</b> Axial MTSK driven tool VD140 Axial MTSK angetriebenes Werkzeug VD140		HAS150.3.10.K
<b>MODULO MOTORIZZATO ASSIALE DISASSATO 42mm VD140</b> Axial driven tool re-directed by 42mm VD140 Axial angetriebenes Werkzeug achsversetzt um 42mm VD140		HAS160.3.00
<b>MODULO MOTORIZZ. ASSIALE MOLTIPLICATO I=1:2 DISASSATO 42mm VD140</b> Axial geared-up I=1:2 driven tool re-directed by 42mm VD140 Axial angetriebenes Werkzeug uebersetzt I=1:2 achsversetzt um 42mm VD140		HAS160.3.20
<b>MODULO MOTORIZZ. ASSIALE MOLTIPLICATO I=1:3 DISASSATO 36mm VD140</b> Axial geared-up I=1:3 driven tool re-directed by 36mm VD140 Axial angetriebenes Werkzeug uebersetzt I=1:3 achsversetzt um 36mm VD140		HAS160.3.30
<b>MODULO MOTORIZZATO RADIALE MOLTIPLICATO I=1:2 VD140</b> Radial geared-up I=1:2 driven tool VD140 Radial angetriebenes Werkzeug uebersetzt I=1:2 VD140		HAS203.3.10
<b>MODULO MOTORIZZATO RADIALE MOLTIPLICATO I=1:3 VD140</b> Radial geared-up I=1:3 driven tool VD140 Radial angetriebenes Werkzeug uebersetzt I=1:3 VD140		HAS208.3.10
<b>MODULO MOTORIZZATO RADIALE ARRETRATO MOLTIPLICATO I=1:3 VD140</b> Radial gear-up I=1:3 rear-set driven tool VD140 Radial angetriebenes Werkzeug uebersetzt I=1:3 zurueckversetzt VD140		HAS226.3.10
<b>MODULO MOTORIZZATO ASSIALE BISPORGENTE DISASSATO 160mm VD140</b> Axial rear-set opposite face twin driven tool re-directed by 160mm VD140 Axial angetriebenes Werkzeug halb vorspringend achsversetzt um 160mm VD140		HAS243.3.10

		PAGINA Page Seite
<b>MODULO MOTORIZZATO RADIALE 2 USCITE IN Y VD140</b> Radial single side twin head driven tool in Y VD140 Radial angetriebenes Werkzeug 2 Ausgaenge in Y VD140		HAS263.3.10
<b>MODULO MOTORIZZATO ORIENTABILE <math>\pm 90^\circ</math> VD140</b> $\pm 90^\circ$ adjustable angle driven tool VD140 Angetriebenes Werkzeug schwenkbar $\pm 90^\circ$ VD140		HAS333.3.00
<b>MODULO MOTORIZZATO ORIENTABILE <math>\pm 90^\circ</math> CON NONIO DIGITALE VD140</b> $\pm 90^\circ$ adjustable angle driven tool with digital display VD140 Angetriebenes Werkzeug schwenkbar $\pm 90^\circ$ mit digital display VD140		HAS333.3.01
<b>MODULO MOTORIZZATO STOZZATORE CORSA 50mm VD140</b> Slotting driven tool 50mm stroke VD140 Keilnutenstossmaschine 50mm Hub VD140		HAS360.3.30
<b>MODULO MOTORIZZATO STOZZATORE CORSA 25mm VD140</b> Slotting driven tool 25mm stroke VD140 Keilnutenstossmaschine 25mm Hub VD140		HAS360.3.31

ATTENZIONE - ATTENTION - ACHTUNG

- Per lo smontaggio degli utensili utilizzare sempre la chiave di contrasto come indicato nel manuale d'uso.
- For disassembly of the tools use always the contrast key as mentioned in the user instructions.
- Fuer das Abmontieren der Werkzeuge immer den Gegenschlüssel benutzen wie in der Bedienungsanleitung erwaeht.

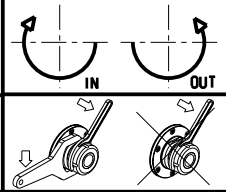


- Chiave inclusa
- Key included
- Schlüssel inbegriffen

Cod. MT	Mandrino Spindle Spindel	I	RPM	Coppia Max Max Torque Max Drehmoment	Lubrificazione int. Coolant through Innenkühlung	Lubrificazione est. Ext. coolant Aussenkühlung	A	A1	B	H	Tipo Torretta Turret type Revolver typ	CHIAVI NON INCLUDE Keys not included Schlüssel nicht einbegriffen	
HAS0140132	ER32	1:1	6000	70Nm	-	X	99.7	-	58.5	117.55	VDI STANDARD / HYBRID TURRET	OKU0650004	CHSTER32
HAS0140232	ER32	1:1	6000	70Nm	P=70bar	X	99.7	-	69.5	117.55	VDI STANDARD / HYBRID TURRET	OKU0650004	CHSTER32
HAS0140140	ER40	1:1	6000	70Nm	-	X	103.7	-	58.5	117.55	VDI STANDARD / HYBRID TURRET	OKU0650004	CHSTER40
HAS0140240	ER40	1:1	6000	70Nm	P=70bar	X	103.7	-	69.5	117.55	VDI STANDARD / HYBRID TURRET	OKU0650004	CHSTER40
HAS0142219	Ø22x19	1:1	6000	70Nm	-	X	-	78.5	58.5	117.55	VDI STANDARD / HYBRID TURRET	CHUB41	CH_VTCROCE_M10
HAS0142721	Ø27x21	1:1	6000	70Nm	-	X	-	78.5	58.5	117.55	VDI STANDARD / HYBRID TURRET	CHUB41	CH_VTCROCE_M12

HAAS  
MOD: ST10/15/20/25/30/35 - DS30 - TL15/25

MODULO MOTORIZZATO RADIALE VDI40  
Radial driven tool VDI40  
Radial angetriebenes Werkzeug VDI40

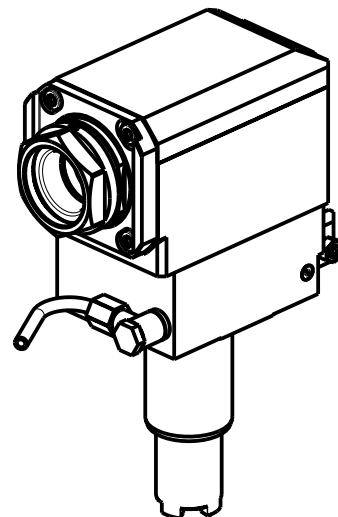
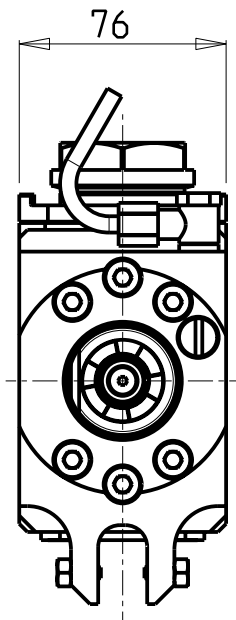
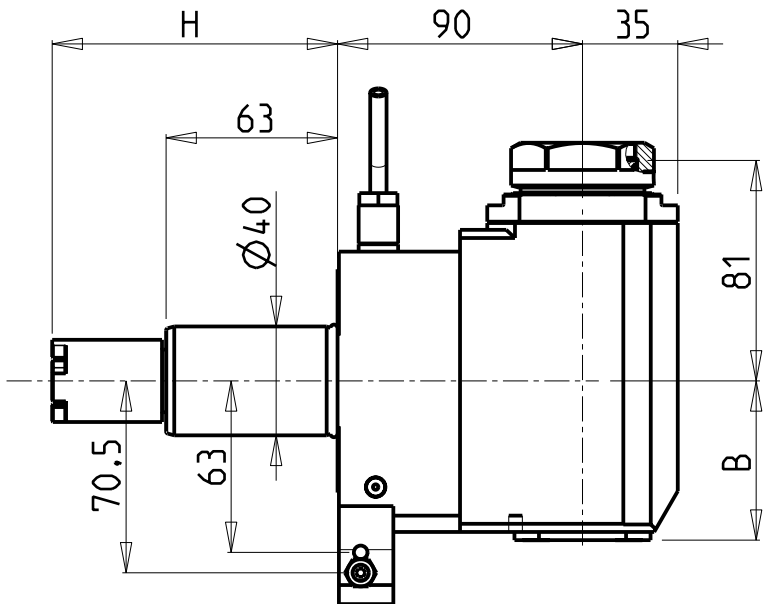


**M.T. srl**  
Via Casino Albini 480  
Tel. 0541/956034-957884  
Fax 0541/956341  
47842 S. GIOVANNI IN M. (RN)  
e-mail: [mtma@mtmarchetti.com](mailto:mtma@mtmarchetti.com)  
<http://www.mtmarchetti.com>

PRODUZIONE MODULI ROTANTI



PAGINA HAS013-3-20



**ATTENZIONE - ATTENTION - ACHTUNG**

- Per lo smontaggio degli utensili utilizzare sempre la chiave di contrasto come indicato nel manuale d'uso.
- For disassembly of the tools use always the contrast key as mentioned in the user instructions.
- Fuer das Abmontieren der Werkzeuge immer den Gegenschlüssel benutzen wie in der Bedienungsanleitung erwaeht.

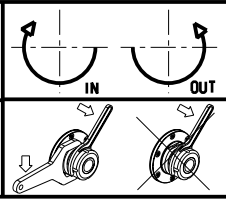
- Chiave inclusa
- Key included
- Schluessel inbegriffen

PER PORTAUTENSILI MODULARI MTSK-40 VEDI PAG. TBL300-1-40  
FOR MTSK-40 QUIK CHANGE TOOLHOLDERS CLAMPINGS SEE PAGE TBL300-1-40  
FUER MTSK-40 MODULARE WERKZEUGAUFNAHMEN SIEHE SEITE TBL300-1-40

Cod. MT	Mandrino Spindle Spindel	I	RPM	Coppia Max Max Torque Max Drehmoment	Lubrificazione int. Coolant through Innenkuehlung	Lubrificazione est. Ext. coolant Aussenkuehlung	B	H	Tipo Torretta Turret type Revolver typ	CHIAVI NON INCLUSE Keys not included Schluessel nicht einbegriffen	
HAS0280140	MTSK-40	1:1	6000	70Nm	-	X	58.5	117.55	VDI STANDARD / HYBRID TURRET	CHUB46	OKU0650004 •
HAS0280240	MTSK-40	1:1	6000	70Nm	P=70bar	X	69.5	117.55	VDI STANDARD / HYBRID TURRET	CHUB46	OKU0650004 •

HAAS  
MOD: ST10/15/20/25/30/35 - DS30 - TL15/25

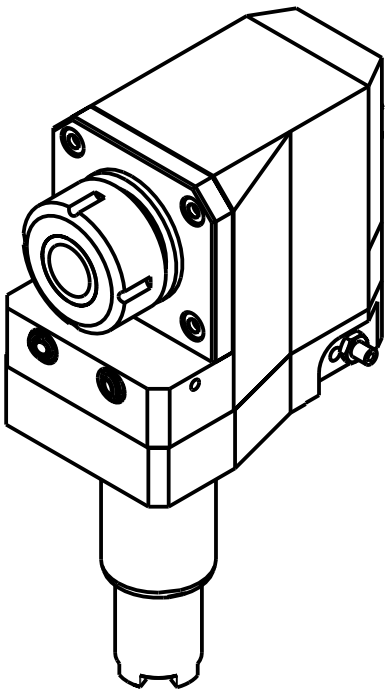
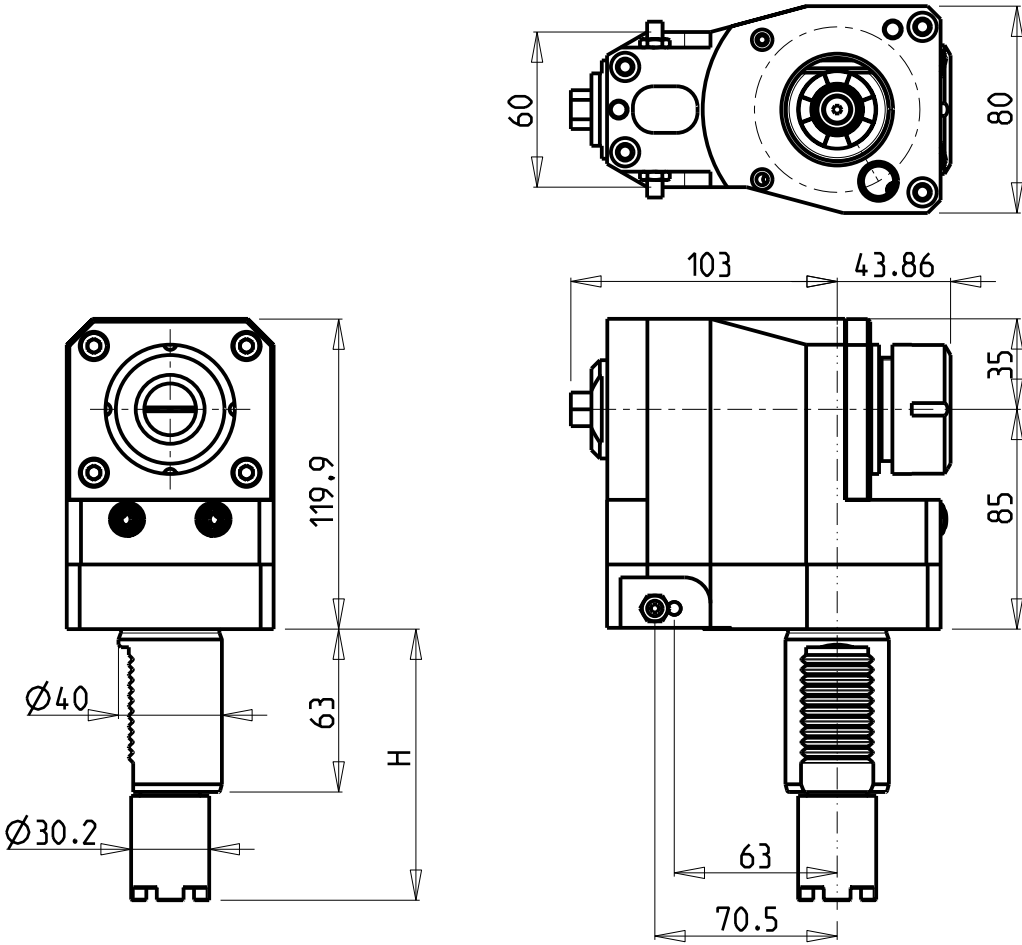
MODULO MOTORIZZATO RADIALE MTSK VDI40  
Radial MTSK driven tool VDI40  
Radial MTSK angetriebenes Werkzeug VDI40



**M.T. srl**  
Via Casino Albini 480  
Tel. 0541/956034-957884  
Fax 0541/956341  
47842 S. GIOVANNI IN M. (RN)  
e-mail: [mtma@mtmarchetti.com](mailto:mtma@mtmarchetti.com)  
<http://www.mtmarchetti.com>

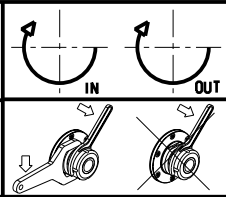
PRODUZIONE MODULI ROTANTI

PAGINA HAS013-3-20-K



Cod. MT	Mandrino Spindle Spindel	I	RPM	Coppia Max Max Torque Max Drehmoment	Lubrificazione est. Ext. coolant Aussenkuehlung	H	Tipo Torretta Turret Type Revolver Typ	CHIAVI NON INCLUSE Keys not included Schlüssel nicht einbegriffen	
HAS0040232	ER32	1:1	6000	70Nm	X	117.55	VDI STANDARD / HYBRID TURRET	CHUB13	CHSTER32

HAAS  
MOD: ST10/15/20/25/30/35 - DS30 - TL15/25  
MODULO MOTORIZZATO RADIALE ARRETRATO VD140  
Radial rear-set driven tool VD140  
Radial angetriebenes Werkzeug zurueckversetzt VD140

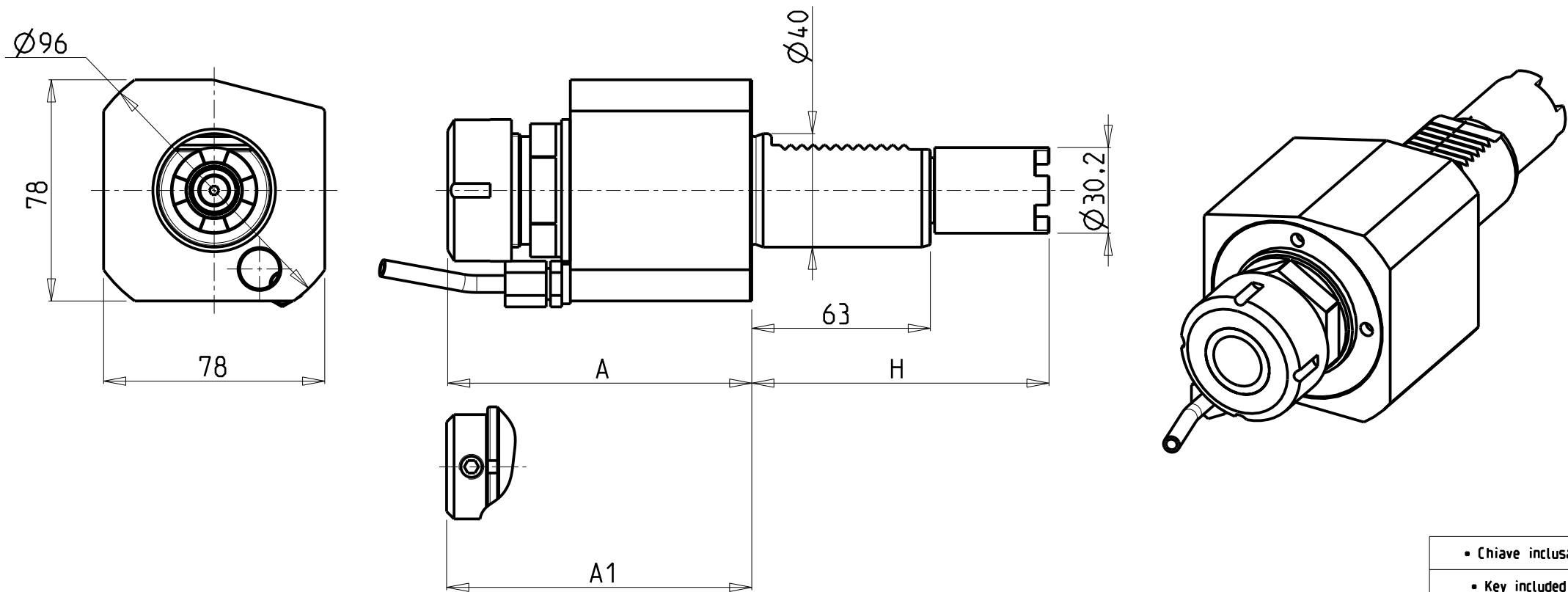


**M.T. srl**  
Via Casino Albini 480  
Tel. 0541/956034-957884  
Fax 0541/956341  
47842 S. GIOVANNI IN M. (RN)  
e-mail: [mtma@mtmarchetti.com](mailto:mtma@mtmarchetti.com)  
<http://www.mtmarchetti.com>

PRODUZIONE MODULI ROTANTI



PAGINA HAS015-3-00

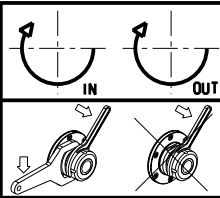


- Chiave inclusa
- Key included
- Schlüssel inbegriffen


Cod. MT	Mandrino Spindle Spindel	I	RPM	Coppia Max Max Torque Max Drehmoment	Lubrificazione est. Ext. coolant Aussenkuehlung	Lubrificazione int. Coolant through Innenkuehlung	A	A1	H	Tipo Torretta Turret Type Revolver Typ	CHIAVI NON INCLUSE Keys not included Schlüssel nicht inbegriffen		
HAS0020232	ER32	1:1	6000	70Nm	X	-	107.26	-	117.55	VDI STANDARD / HYBRID TURRET	CHUB41	CHSTER32	
HAS0020132	ER32	1:1	6000	70Nm	X	P=30bar	110.46	-	117.55	VDI STANDARD / HYBRID TURRET	CHUB41	CHSTER32	
HAS0020325	ERA25	1:1	6000	70Nm	X	-	74	-	117.55	VDI STANDARD / HYBRID TURRET	CHUB42	CHTAER25ZC	CHUB27
HAS0020525	WELDON25	1:1	6000	70Nm	X	-	-	97.1	117.55	VDI STANDARD / HYBRID TURRET	-	-	

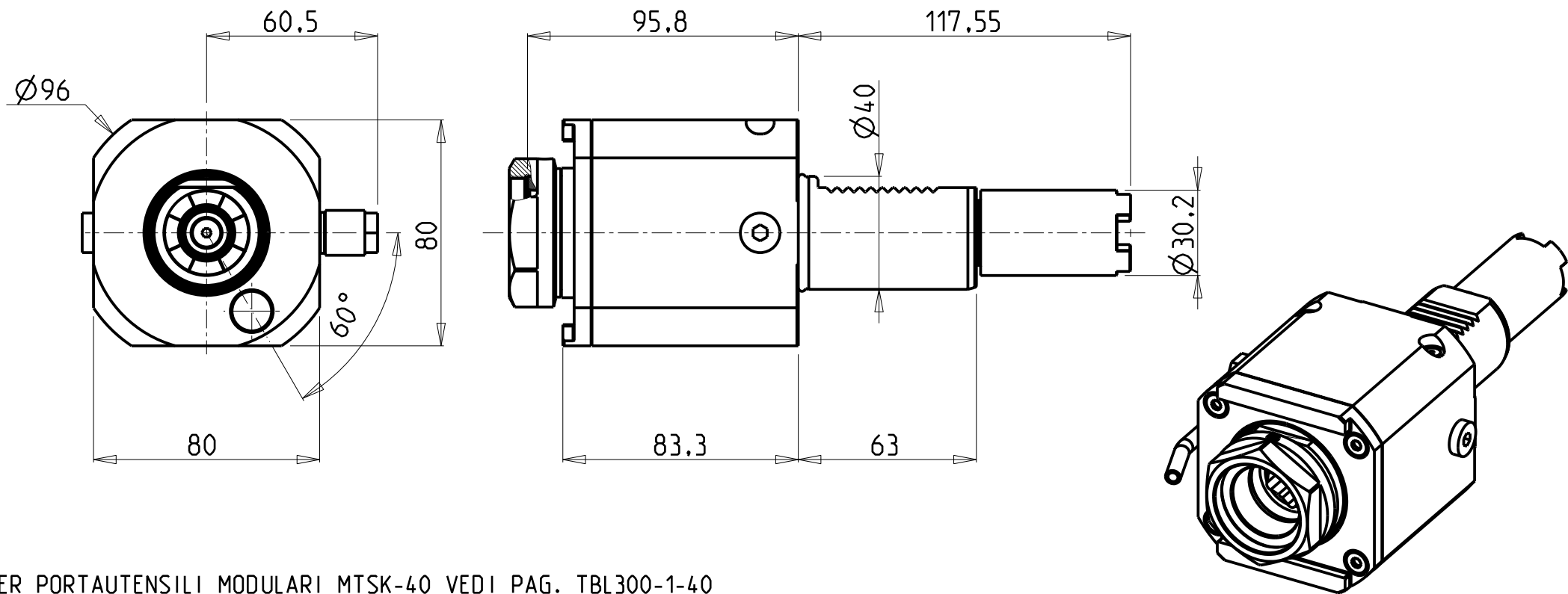
HAAS  
MOD: ST10/15/20/25/30/35 - DS30 - TL15/25

MODULO MOTORIZZATO ASSIALE VDI40  
Axial driven tool VDI40  
Axial angetriebenes Werkzeug VDI40



**M.T. srl**  
Via Casino Albini 480  
Tel. 0541/956034-957884  
Fax 0541/956341  
47842 S. GIOVANNI IN M. (RN)  
e-mail: [mtma@mtmarchetti.com](mailto:mtma@mtmarchetti.com)  
<http://www.mtmarchetti.com>

PRODUZIONE MODULI ROTANTI  
  
PAGINA HAS150-3-10



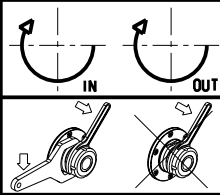
PER PORTAUTENSILI MODULARI MTSK-40 VEDI PAG. TBL300-1-40  
FOR MTSK-40 QUIK CHANGE TOOLHOLDERS CLAMPINGS SEE PAGE TBL300-1-40  
FUER MTSK-40 MODULARE WERKZEUGAUFNAHMEN SIEHE SEITE TBL300-1-40

Cod. MT	Mandrino Spindle Spindel	I	RPM	Coppia Max Max Torque Max Drehmoment	Lubrificazione est. Ext. coolant Aussenkuehlung	Tipo Torretta Turret Type Revolver Typ	CHIAVI NON INCLUSE Keys not included Schluessel nicht einbegriffen	
HAS0500140	MTSK-40	1:1	6000	70Nm	X	VDI STANDARD / HYBRID TURRET	CHUB46	OKU0650004 •

- Chiave inclusa
- Key included
- Schluessel inbegriffen

HAAS  
MOD: ST10/15/20/25/30/35 - DS30 - TL15/25

MODULO MOTORIZZATO ASSIALE MTSK VDI40  
Axial MTSK driven tool VDI40  
Axial MTSK angetriebenes Werkzeug VDI40

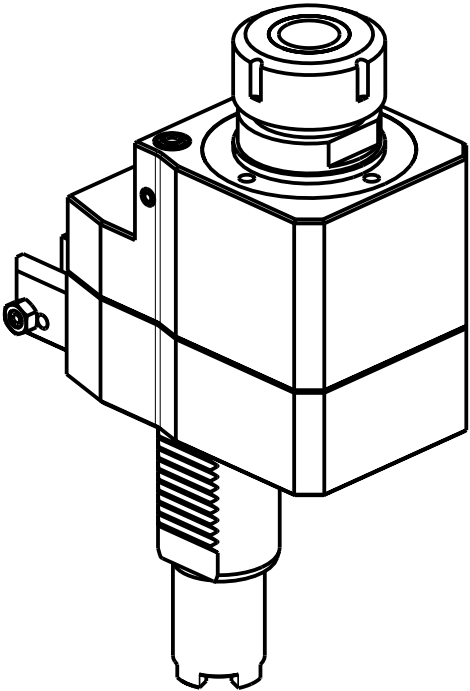
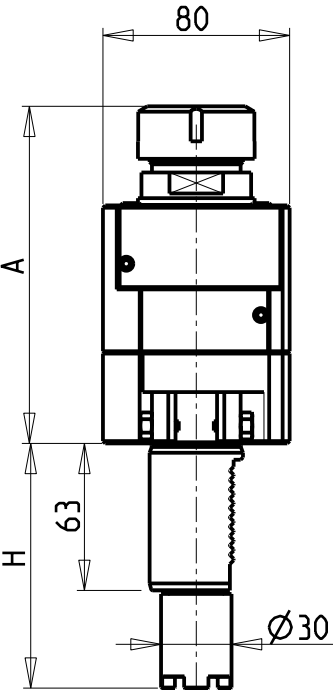
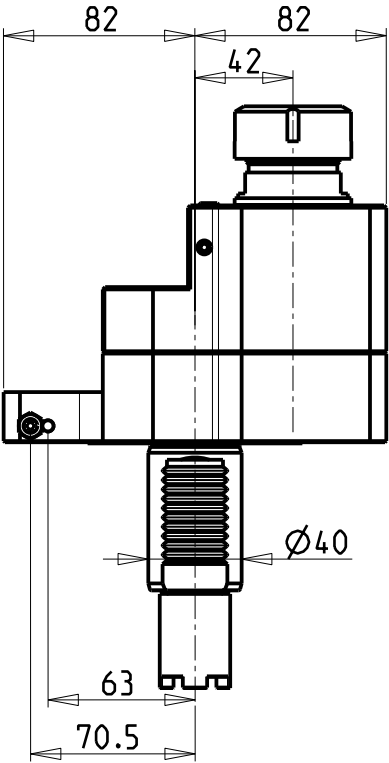


**M.T. srl**  
Via Casino Albini 480  
Tel. 0541/956034-957884  
Fax 0541/956341  
47842 S. GIOVANNI IN M. (RN)  
e-mail: [mtma@mtmarchetti.com](mailto:mtma@mtmarchetti.com)  
<http://www.mtmarchetti.com>

PRODUZIONE MODULI ROTANTI



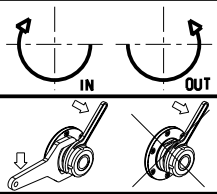
PAGINA HAS150-3-10-K



Cod. MT	Mandrino Spindle Spindel	I	RPM	Coppia Max Max Torque Max Drehmoment	Lubrificazione int. Coolant through Innenkühlung	Lubrificazione est. Ext. coolant Aussenkühlung	A	H	Tipo Torretta Turret Type Revolver Typ	CHIAVI NON INCLUSE Keys not included Schlüssel nicht einbegriffen	
HAS0080032	ER32	1:1	6000	70Nm	-	X	144.66	117.55	VDI STANDARD / HYBRID TURRET	CHUB41	CHSTER32
HAS0081132	ER32	1:1	6000	70Nm	P=30bar	-	164.96	117.55	VDI STANDARD / HYBRID TURRET	CHUB38	CHSTER32
HAS0082132	ER32	2:1	3000	100Nm	-	X	144.66	117.55	VDI STANDARD / HYBRID TURRET	CHUB41	CHSTER32
HAS0084232	ER32	2:1	3000	100Nm	P=30bar	-	164.96	117.55	VDI STANDARD / HYBRID TURRET	CHUB38	CHSTER32


HAAS  
MOD: ST10/15/20/25/30/35 - DS30 - TL15/25

MODULO MOTORIZZATO ASSIALE DISASSATO 42mm VDI40  
Axial driven tool re-directed by 42mm VDI40  
Axial angetriebenes Werkzeug achsversetzt um 42mm VDI40



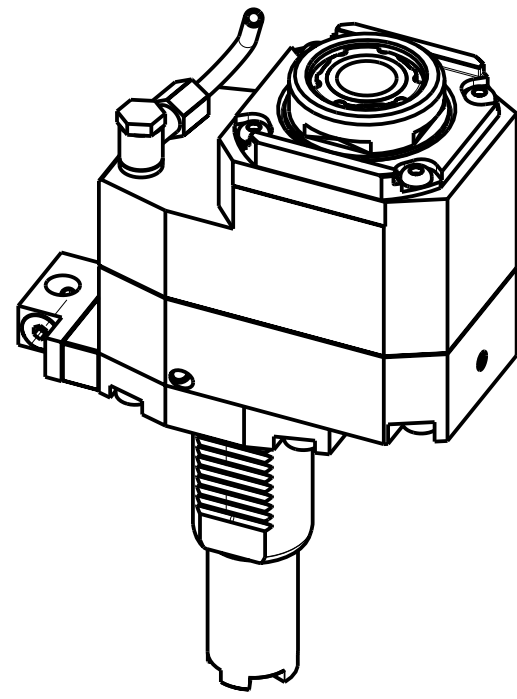
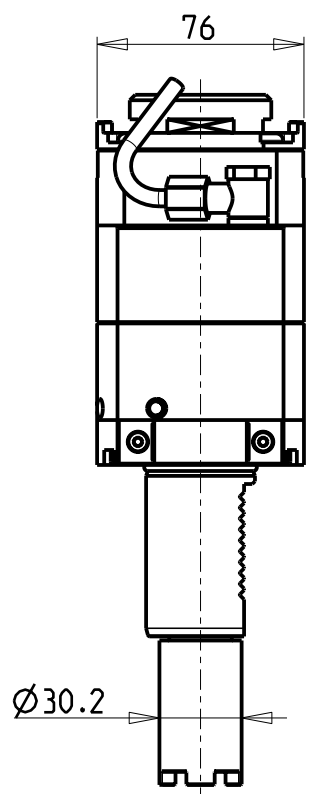
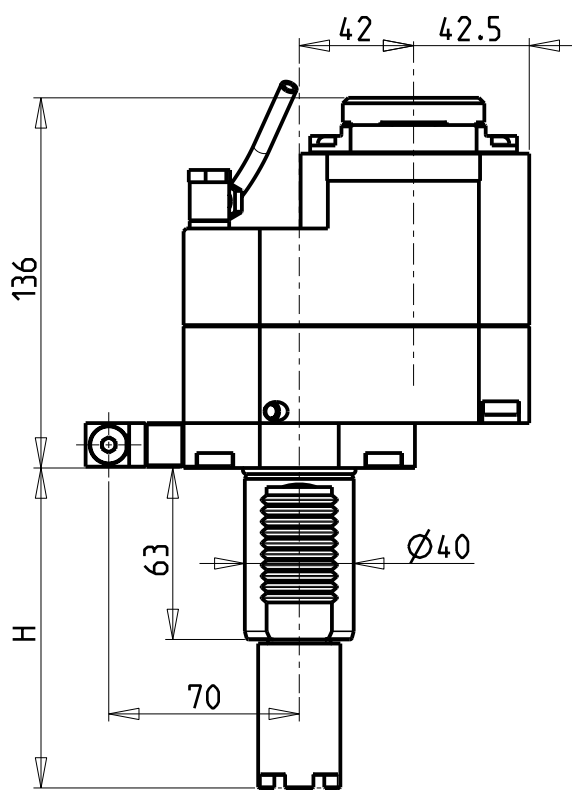
**M.T. srl**  
Via Casino Albini 480  
Tel. 0541/956034-957884  
Fax 0541/956341  
47842 S. GIOVANNI IN M. (RN)  
e-mail: [mtma@mtmarchetti.com](mailto:mtma@mtmarchetti.com)  
<http://www.mtmarchetti.com>

PRODUZIONE MODULI ROTANTI



PAGINA HAS160-3-00

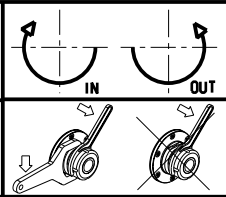




- Chiave inclusa
- Key included
- Schluessel inbegriffen

Cod. MT	Mandrino Spindle Spindel	I	RPM	Coppia Max Max Torque Max Drehmoment	Lubrificazione int. Coolant through Innenkuhlung	Lubrificazione est. Ext. coolant Aussenkuhlung	H	Tipo Torretta Turret Type Revolver Typ	CHIAVI NON INCLUSE Keys not included Schluessel nicht einbegriffen		
HAS0317132	ERA32	1:2	12000	45Nm	-	X	117.55	VDI STANDARD / HYBRID TURRET	CHUB30	CHTAER32ZC	OKU0650004
HAS0317232	ERA32	1:2	12000	45Nm	P=70bar	X	117.55	VDI STANDARD / HYBRID TURRET	CHUB30	CHTAER32ZC	OKU0650004

HAAS  
MOD: ST10/15/20/25/30/35 - DS30 - TL15/25  
MODULO MOTORIZZATO ASSIALE MOLTIPLICATO I=1:2 DISASSATO 42mm VDI40  
Axial geared-up I=1:2 driven tool re-directed by 42mm VDI40  
Axial angetriebenes Werkzeug uebersetzt I=1:2 achsversetzt um 42mm VDI40

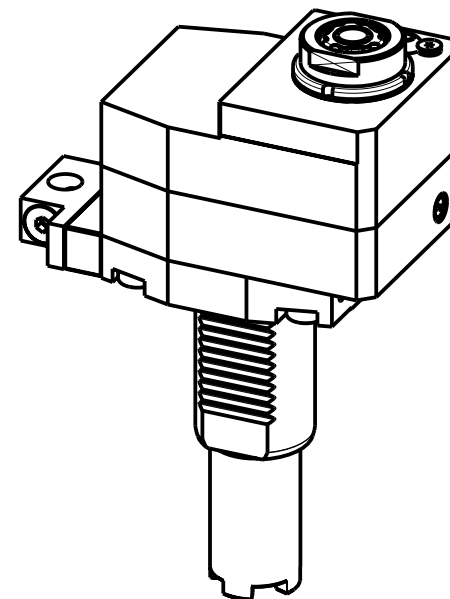
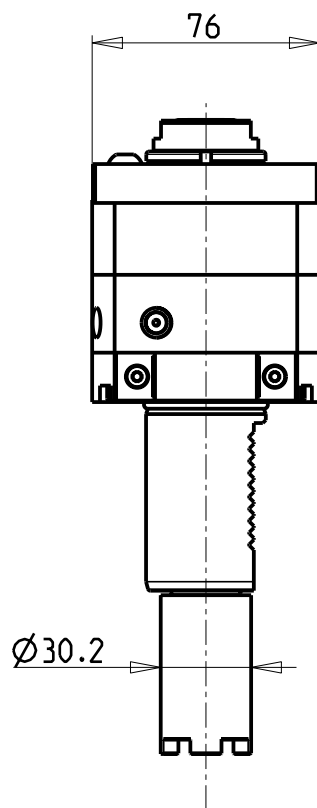
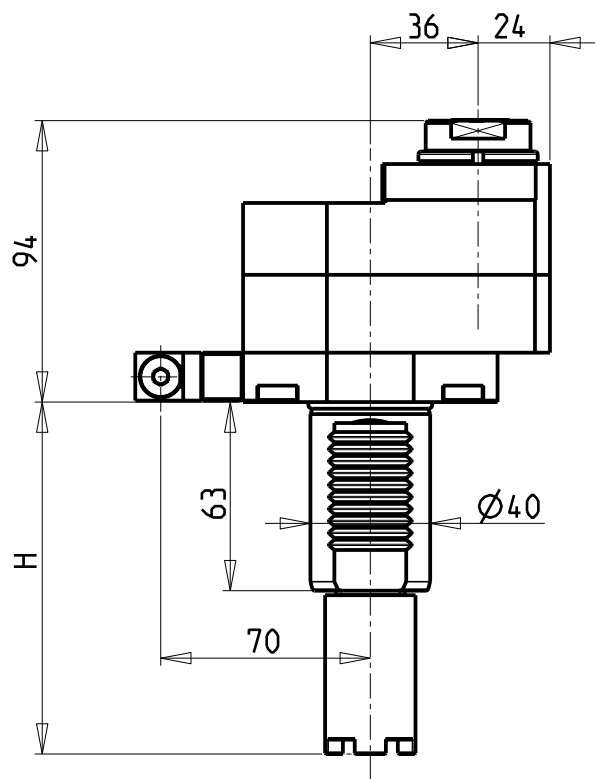


**M.T. srl**  
Via Casino Albini 480  
Tel. 0541/956034-957884  
Fax 0541/956341  
47842 S. GIOVANNI IN M. (RN)  
e-mail: [mtma@mtmarchetti.com](mailto:mtma@mtmarchetti.com)  
<http://www.mtmarchetti.com>

PRODUZIONE MODULI ROTANTI



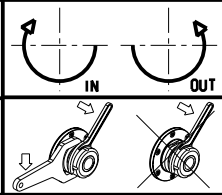
PAGINA HAS160-3-20



- Chiave inclusa
- Key included
- Schlüssel inbegriffen

Cod. MT	Mandrino Spindle Spindel	I	RPM	Coppia Max Max Torque Max Drehmoment	Lubrificazione int. Coolant through Innenkuhlung	Lubrificazione est. Ext. coolant Aussenkuhlung	H	Tipo Torretta Turret Type Revolver Typ	CHIAVI NON INCLUSE Keys not included Schlüssel nicht einbegriffen		
HAS0380116	ERA16	1:3	18000	10Nm	-	X	117.55	VDI STANDARD / HYBRID TURRET	CHUB30	CHUB19_SP3	CHTAER16ZC •
HAS0380216	ERA16	1:3	18000	10Nm	P=70bar	X	117.55	VDI STANDARD / HYBRID TURRET	CHUB30	CHUB19_SP3	CHTAER16ZC •

HAAS  
MOD: ST10/15/20/25/30/35 - DS30 - TL15/25  
MODULO MOTORIZZATO ASSIALE MOLTIPLICATO I=1:3 DISASSATO 36mm VDI40  
Axial geared-up I=1:3 driven tool re-directed by 36mm VDI40  
Axial angetriebenes Werkzeug uebersetzt I=1:3 achsversetzt um 36mm VDI40

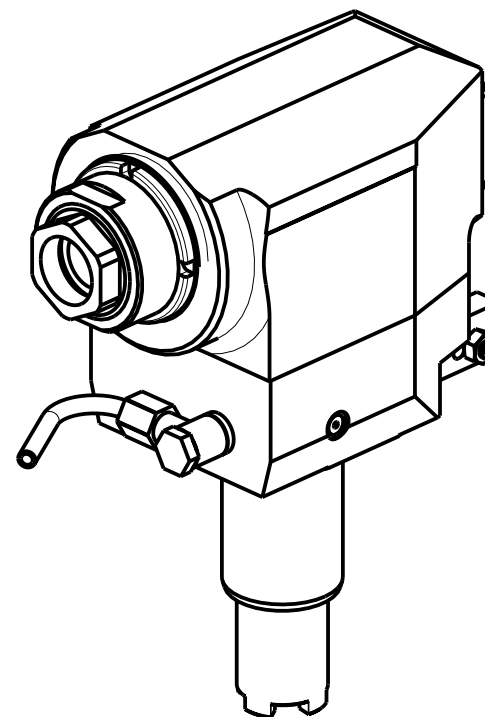
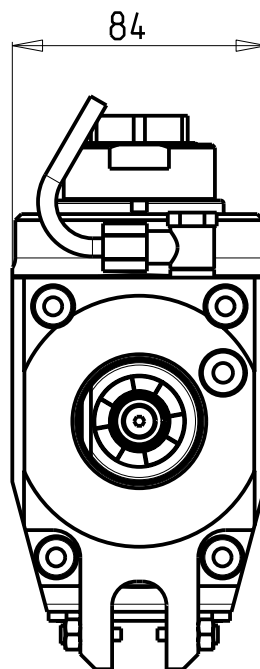
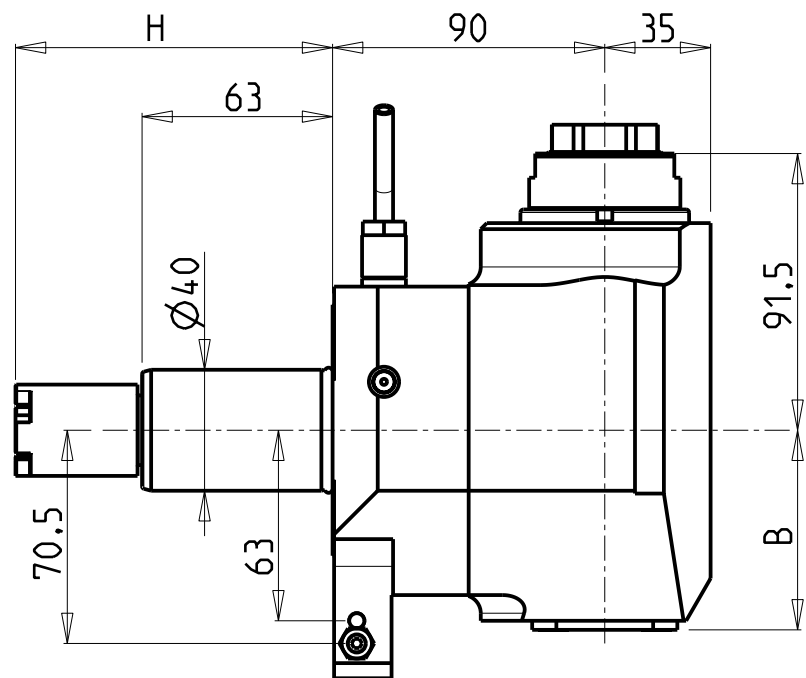


**M.T. srl**  
Via Casino Albini 480  
Tel. 0541/956034-957884  
Fax 0541/956341  
47842 S. GIOVANNI IN M. (RN)  
e-mail: [mtma@mtmarchetti.com](mailto:mtma@mtmarchetti.com)  
<http://www.mtmarchetti.com>

PRODUZIONE MODULI ROTANTI



PAGINA HAS160-3-30

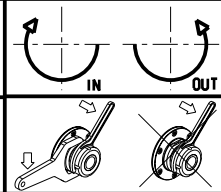


Cod. MT	Mandrino Spindle Spindel	I	RPM	Coppia Max Max Torque Max Drehmoment	Lubrificazione int. Coolant through Innenkühlung	Lubrificazione est. Ext. coolant Aussenkühlung	B	H	Tipo Torretta Turret type Revolver typ	CHIAVI NON INCLUSE Keys not included Schlüssel nicht einbegriffen	
HAS0160132	ERA32	1:2	12000	30Nm	-	X	66	117.55	VDI STANDARD / HYBRID TURRET	CHUB46	CHUB32
HAS0160232	ERA32	1:2	12000	30Nm	P=70bar	X	76	117.55	VDI STANDARD / HYBRID TURRET	CHUB46	CHUB32

HAAS  
MOD: ST10/15/20/25/30/35 - DS30 - TL15/25

MODULO MOTORIZZATO RADIALE MOLTIPLICATO I=1:2 VDI40  
Radial geared-up I=1:2 driven tool VDI40  
Radial angetriebenes Werkzeug uebersetzt I=1:2 VDI40

Subject to change without notice.

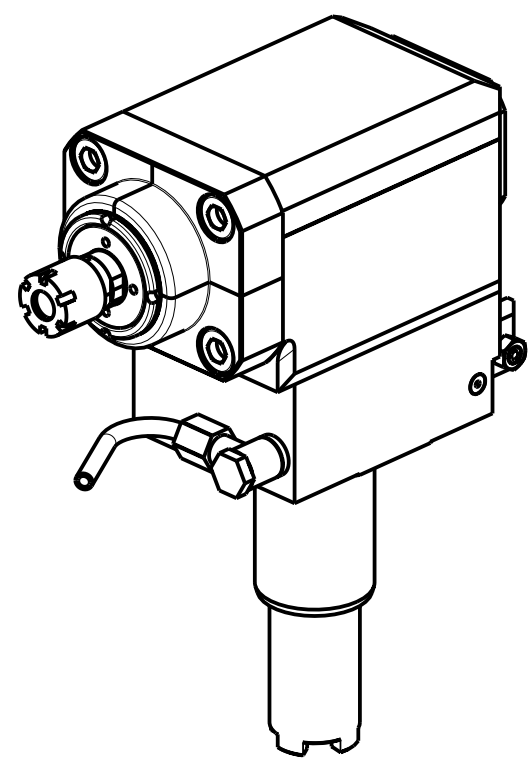
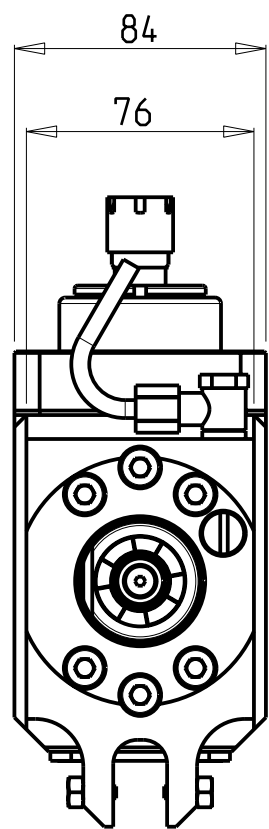
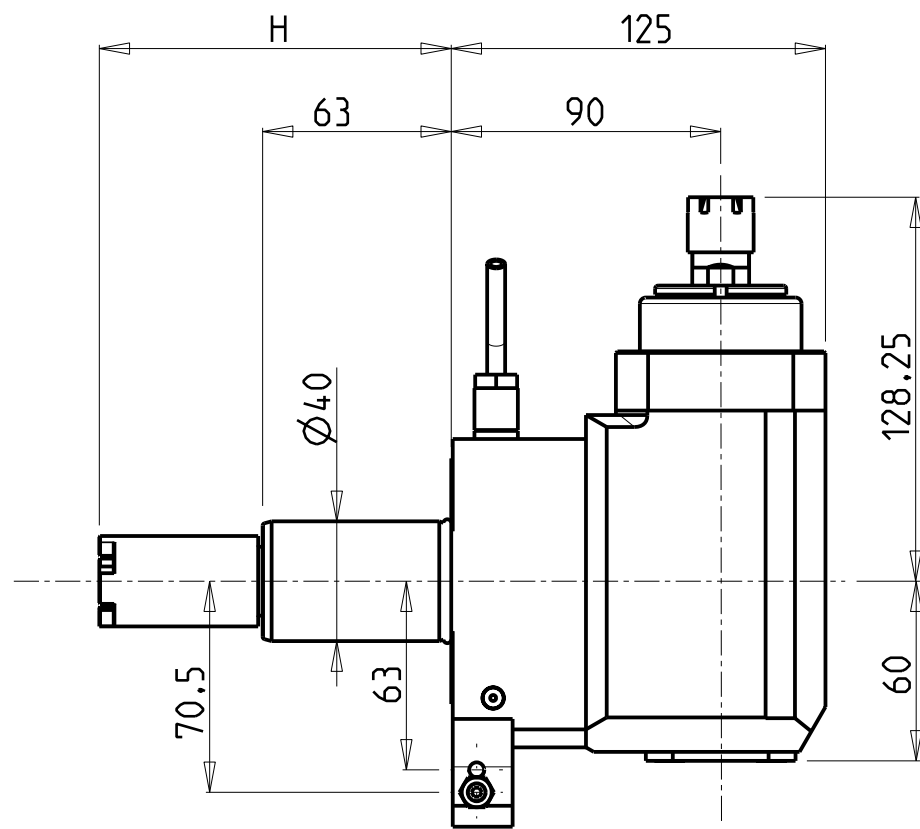


**M.T. srl**  
Via Casino Albini 480  
Tel. 0541/956034-957884  
Fax 0541/956341  
47842 S. GIOVANNI IN M. (RN)  
e-mail: [mtma@mtmarchetti.com](mailto:mtma@mtmarchetti.com)  
<http://www.mtmarchetti.com>

PRODUZIONE MODULI ROTANTI

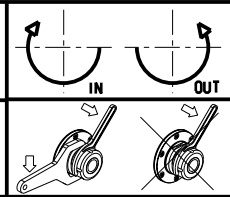


PAGINA HAS203-3-10



Cod. MT	Mandrino Spindle Spindel	I	RPM	Coppia Max Max Torque Max Drehmoment	Lubrificazione est. Ext. coolant Aussenkühlung	H	Tipo Torretta Turret type Revolver typ	CHIAVI INCLUSE Keys included Schlüssel einbegriffen	
HAS0340016	ER16	1:3	18000	10Nm	X	117.55	VDI STANDARD / HYBRID TURRET	CHUB17	CHMNER16

HAAS  
MOD: ST10/15/20/25/30/35 - DS30 - TL15/25  
MODULO MOTORIZZATO RADIALE MOLTIPLICATO I=1:3 VDI40  
Radial geared-up I=1:3 driven tool VDI40  
Radial angetriebenes Werkzeug uebersetzt I=1:3 VDI40

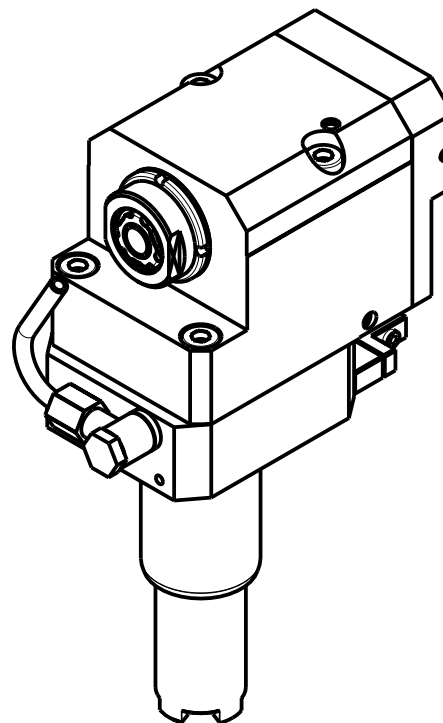
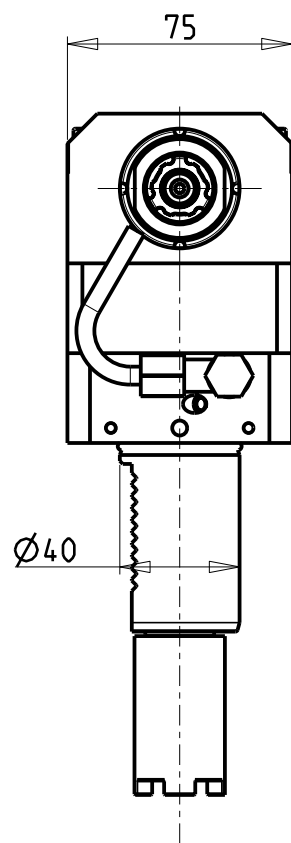
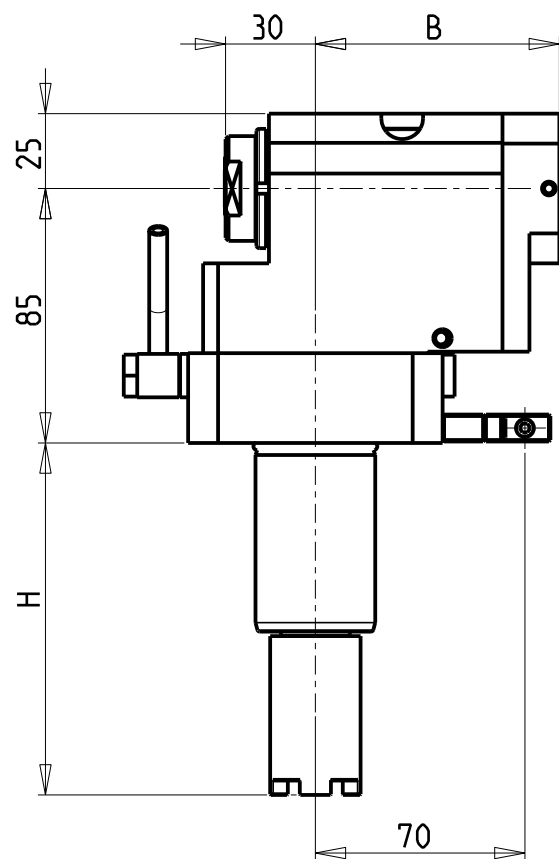


**M.T. srl**  
Via Casino Albini 480  
Tel. 0541/956034-957884  
Fax 0541/956341  
47842 S. GIOVANNI IN M. (RN)  
e-mail: [mtma@mtmarchetti.com](mailto:mtma@mtmarchetti.com)  
<http://www.mtmarchetti.com>

PRODUZIONE MODULI ROTANTI



PAGINA HAS208-3-10



ATTENZIONE - ATTENTION - ACHTUNG

- VERIFICARE LE MISURE DI INGOMBRO PER POSSIBILE INTERFERENZA SU ALCUNI MODELLI DI MACCHINE
- Please check the overall sizes for possible interferences on some machine models
- Bitte überprüfen sie das ausmass um mögliche interferenzen auf einigen maschinen modellen zu vermeiden

- Chiave inclusa
- Key included
- Schluessel inbegriffen

Cod. MT	Mandrino Spindle Spindel	I	RPM	Coppia Max Max Torque Max Drehmoment	Lubrificazione int. Coolant through Innenkühlung	Lubrificazione est. Ext. coolant Aussenkühlung	B	H	Tipo Torretta Turret Type Revolver Typ	CHIAVI NON INCLUSE Keys not included Schluessel nicht einbegriffen		
HAS0410116	ERA16	1:3	18000	10Nm	-	X	70.5	117.55	VDI STANDARD / HYBRID TURRET	CHUB30	CHUB19_SP3	CHTAER16ZC •
HAS0410216	ERA16	1:3	18000	10Nm	P=70bar	X	83	117.55	VDI STANDARD / HYBRID TURRET	CHUB30	CHUB19_SP3	CHTAER16ZC •

HAAS

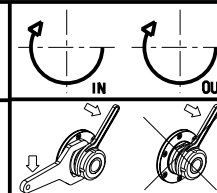
MOD: ST10/15/20/25/30/35 - DS30 - TL15/25

MODULO MOTORIZZATO RADIALE ARRETRATO MOLTIPLICATO I=1:3 VDI40

Radial geared-up I=1:3 rear-set driven tool VDI40

Radial angetriebenes Werkzeug uebersetzt I=1:3 zurueckversetzt VDI40

Subject to change without notice.

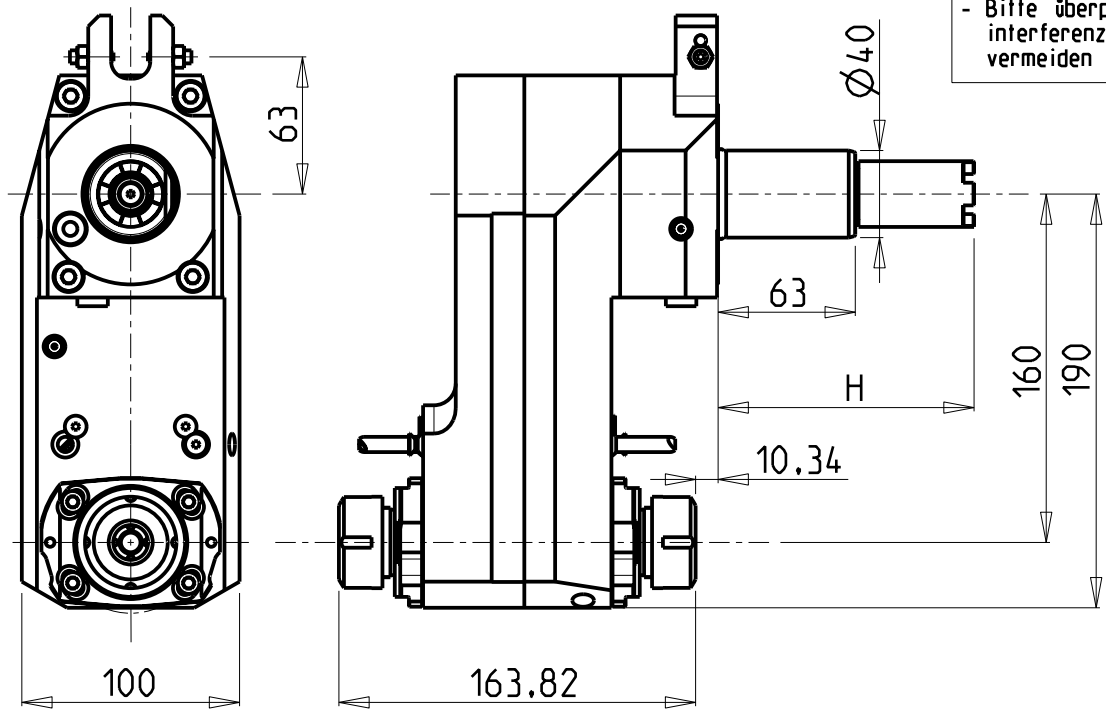


**M.T. srl**  
Via Casino Albini 480  
Tel. 0541/956034-957884  
Fax 0541/956341  
47842 S. GIOVANNI IN M. (RN)  
e-mail: [mtma@mtmarchetti.com](mailto:mtma@mtmarchetti.com)  
<http://www.mtmarchetti.com>

PRODUZIONE MODULI ROTANTI



PAGINA HAS226-3-10

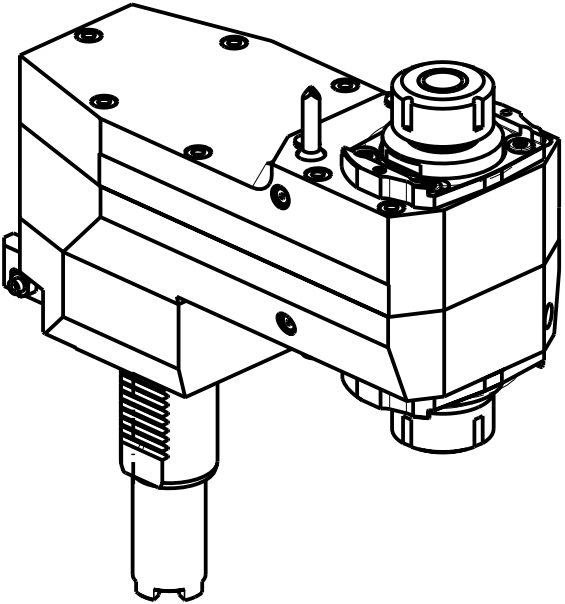


**ATTENZIONE - ATTENTION - ACHTUNG**

- VERIFICARE LE MISURE DI INGOMBRO PER POSSIBILE INTERFERENZA SU ALCUNI MODELLI DI MACCHINE
- Please check the overall sizes for possible interferences on some machine models
- Bitte überprüfen sie das ausmass um mögliche interferenzen auf einigen maschinen modellen zu vermeiden

**ATTENZIONE - ATTENTION - ACHTUNG**

- Per lo smontaggio degli utensili utilizzare sempre la chiave di contrasto come indicato nel manuale d'uso.
- For disassembly of the tools use always the contrast key as mentioned in the user instructions.
- Fuer das Abmontieren der Werkzeuge immer den Gegenschlüssel benutzen wie in der Bedienungsanleitung erwaeht.



Cod. MT	Mandrino Spindle Spindel	I	RPM	Coppia Max Max Torque Max Drehmoment	Lubrificazione est. Ext. coolant Aussenkuehlung	H	Tipo Torretta Turret type Revolver typ	CHIAVI NON INCLUSE Keys not included Schlüssel nicht einbegriffen	
HAS0230225	ER25+ER25	1:1	6000	70Nm	X	117.55	VDI STANDARD / HYBRID TURRET	OKU0650004	CHSTER25

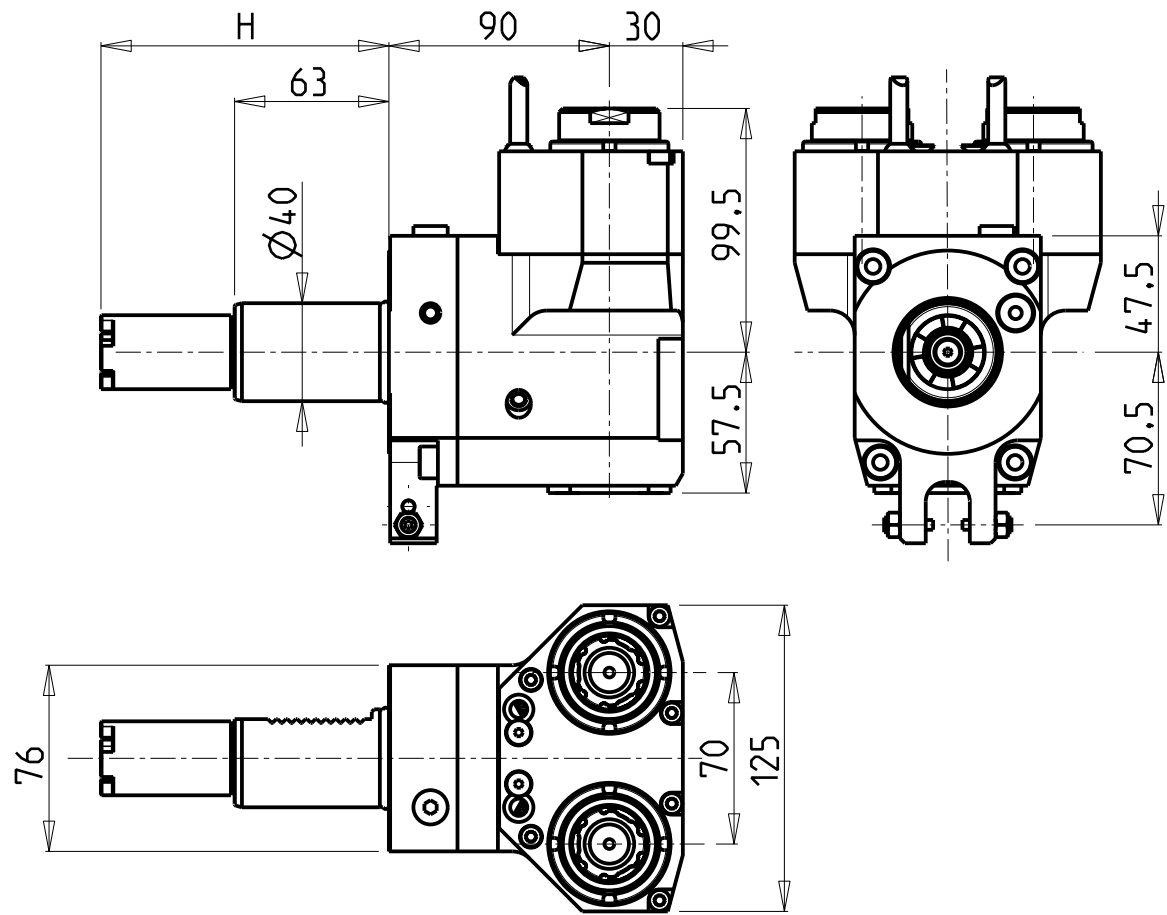
• Chiave inclusa
• Key included
• Schlüssel inbegriffen

HAAS  
MOD: DS30 - TL15/25  
MODULO MOTORIZZATO ASSIALE BISPORGENTE DISASSATO 160mm VDI40  
Axial rear-set opposite face twin driven tool re-directed by 160mm VDI40  
Axial angetriebenes Werkzeug halb vospringend achsversetzt um 160mm VDI40

Subject to change without notice.

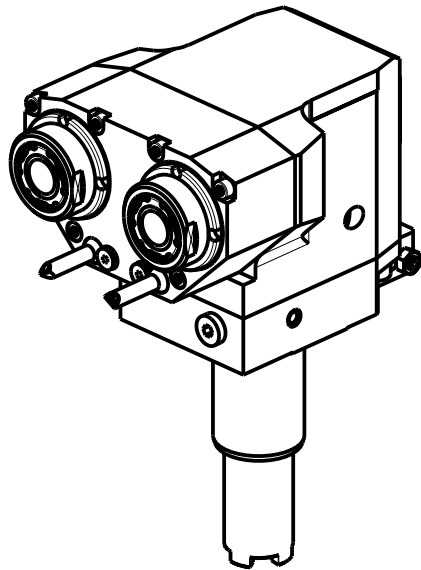
**M.T. srl**  
Via Casino Albini 480  
Tel. 0541/956034-957884  
Fax 0541/956341  
47842 S. GIOVANNI IN M. (RN)  
e-mail: [mtma@mtmarchetti.com](mailto:mtma@mtmarchetti.com)  
<http://www.mtmarchetti.com>

PRODUZIONE MODULI ROTANTI  
  
PAGINA HAS243-3-10



**ATTENZIONE - ATTENTION - ACHTUNG**

- Per lo smontaggio degli utensili utilizzare sempre la chiave di contrasto come indicato nel manuale d'uso.
- For disassembly of the tools use always the contrast key as mentioned in the user instructions.
- Fuer das Abmontieren der Werkzeuge immer den Gegenschlüssel benutzen wie in der Bedienungsanleitung erwaeht.

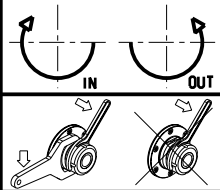


- Chiave inclusa
- Key included
- Schluessel inbegriffen

Cod. MT	Mandrino Spindle Spindel	I	RPM	Coppia Max Max Torque Max Drehmoment	N°Utensili N°Tools N°Werkzeuge	Lubrificazione int. Coolant through Innenkuehlung	Lubr.esterna Ext. coolant Aussenkuehlung	H	Tipo Torretta Turret type Revolver typ	CHIAVI NON INCLUSE Keys not included Schluessel nicht einbegriffen		
HAS0240125	ERA25	1:1	6000	50Nm	2	-	X	117.55	VDI STANDARD / HYBRID TURRET	CHUB38	CHUB27	CHTAER25ZC •
HAS0240225	ERA25	1:1	6000	50Nm	2	P=70bar	X	117.55	VDI STANDARD / HYBRID TURRET	CHUB38	CHUB27	CHTAER25ZC •

HAAS  
MOD: ST10/20/25/30/35 - DS30

MODULO MOTORIZZATO RADIALE 2 USCITE IN Y VDI40  
Radial single side twin head driven tool in Y VDI40  
Radial angetriebenes Werkzeug 2 Ausgaenge in Y VDI40

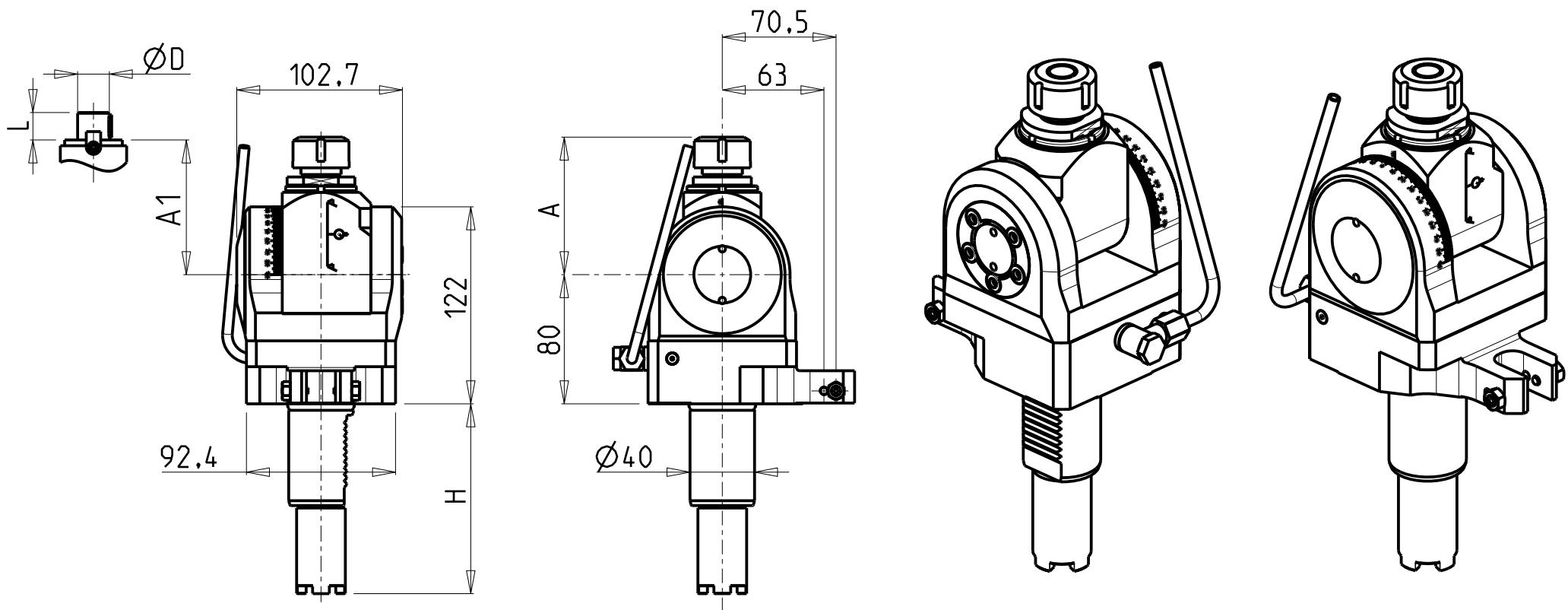


**M.T. srl**  
Via Casino Albini 480  
Tel. 0541/956034-957884  
Fax 0541/956341  
47842 S. GIOVANNI IN M. (RN)  
e-mail: [mtma@mtmarchetti.com](mailto:mtma@mtmarchetti.com)  
<http://www.mtmarchetti.com>

PRODUZIONE MODULI ROTANTI



PAGINA HAS263-3-10

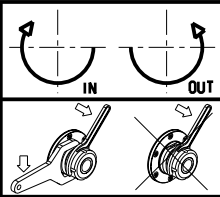


Cod. MT	Mandrino Spindle Spindel	I	RPM	Coppia Max Max Torque Max Drehmoment	Lubrificazione est. Ext. coolant Aussenkuehlung	A	A1	D	L	H	Tipo Torretta Turret Type Revolver Typ	CHIAVI INCLUSE Keys included Schluessel inbegriffen	
HAS0480120	ER20	1:1	6000	40Nm	X	85.16	-	-	-	117.55	VDI STANDARD / HYBRID TURRET	CHUB36	CHSTER20
HAS0480125	ER25	1:1	6000	40Nm	X	86.16	-	-	-	117.55	VDI STANDARD / HYBRID TURRET	CHUB36	CHSTER25
HAS0480516	Ø16x17	1:1	6000	40Nm	X	-	65	16	17	117.55	VDI STANDARD / HYBRID TURRET	CHUB36	CH_VTCROCE_M08
HAS0480522	Ø22x19	1:1	6000	40Nm	X	-	66	22	19	117.55	VDI STANDARD / HYBRID TURRET	CHUB36	CH_VTCROCE_M10
HAS0480519	Ø3/4"x3/4"	1:1	6000	40Nm	X	-	65	3/4"	3/4"	117.55	VDI STANDARD / HYBRID TURRET	CHUB36	CH_VTCROCE_M08

HAAS  
MOD: ST10/15/20/25/30/35 - DS30 - TL15/25


MODULO MOTORIZZATO ORIENTABILE ±90° VDI40  
±90° adjustable angle driven tool VDI40  
Angetriebenes Werkzeug schwenkbar ±90° VDI40

Subject to change without notice.



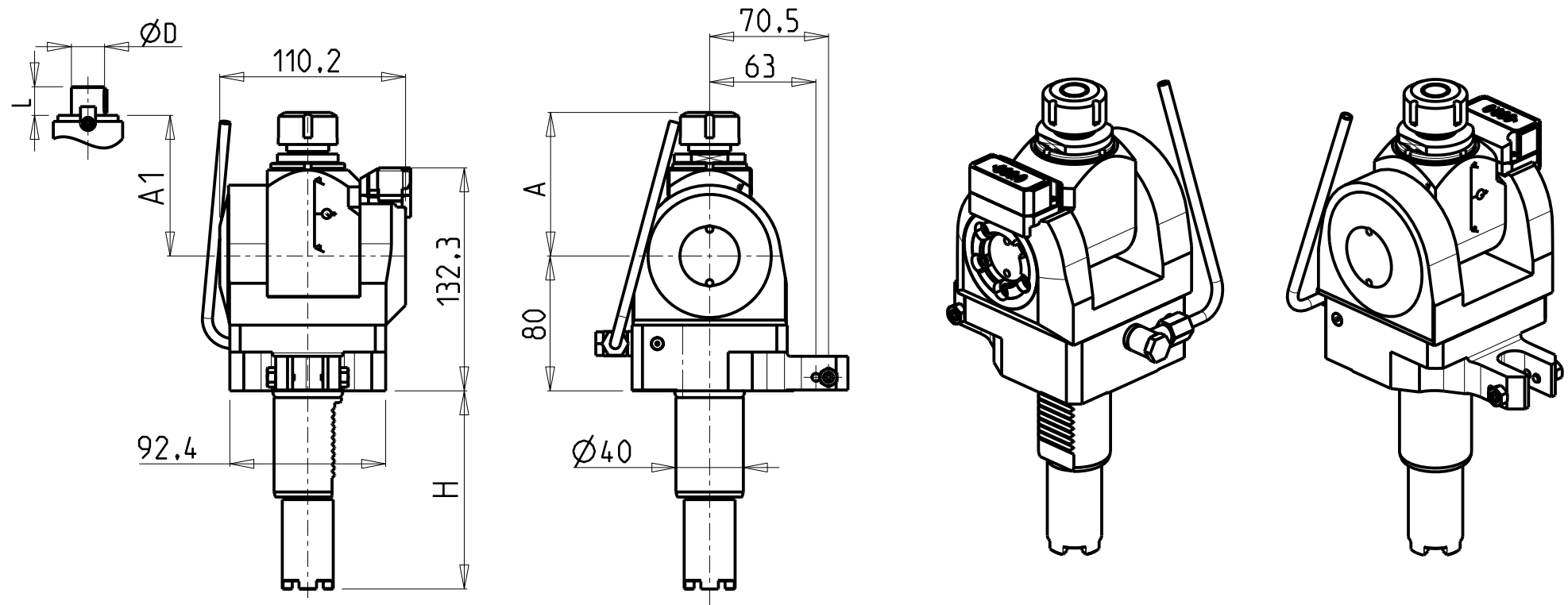
**M.T. srl**  
Via Casino Albini 480  
Tel. 0541/956034-957884  
Fax 0541/956341  
47842 S. GIOVANNI IN M. (RN)  
e-mail: [mtma@mtmarchetti.com](mailto:mtma@mtmarchetti.com)  
<http://www.mtmarchetti.com>

PRODUZIONE MODULI ROTANTI



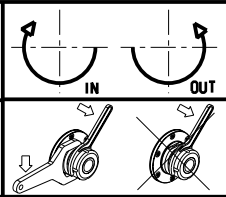
PAGINA HAS333-3-00





Cod. MT	Mandrino Spindle Spindel	I	RPM	Coppia Max Max Torque Max Drehmoment	Lubrificazione est. Ext. coolant Aussenkuehlung	A	A1	D	L	H	Tipo Torretta Turret Type Revolver Typ	CHIAVI INCLUDE Keys included Schluessel inbegriffen	
HAS0450120	ER20	1:1	6000	40Nm	X	85.16	-	-	-	117.55	VDI STANDARD / HYBRID TURRET	CHUB36	CHSTER20
HAS0450125	ER25	1:1	6000	40Nm	X	86.16	-	-	-	117.55	VDI STANDARD / HYBRID TURRET	CHUB36	CHSTER25
HAS0450516	Ø16x17	1:1	6000	40Nm	X	-	65	16	17	117.55	VDI STANDARD / HYBRID TURRET	CHUB36	CH_VTCROCE_M08
HAS0450522	Ø22x19	1:1	6000	40Nm	X	-	66	22	19	117.55	VDI STANDARD / HYBRID TURRET	CHUB36	CH_VTCROCE_M10
HAS0450519	Ø3/4"x3/4"	1:1	6000	40Nm	X	-	65	3/4"	3/4"	117.55	VDI STANDARD / HYBRID TURRET	CHUB36	CH_VTCROCE_M08

HAAS  
MOD: ST10/15/20/25/30/35 - DS30 - TL15/25  
MODULO MOTORIZZATO ORIENTABILE ±90° CON NONIO DIGITALE VDI40  
±90° adjustable angle driven tool with digital display VDI40  
Angetriebenes Werkzeug schwenkbar ±90° mit digital display VDI40

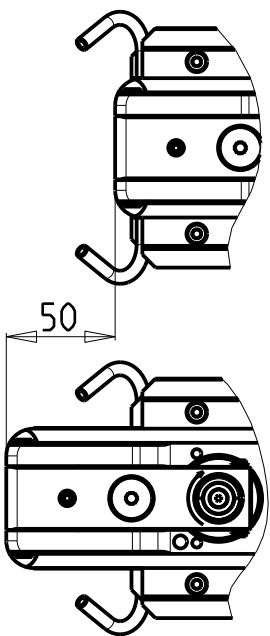
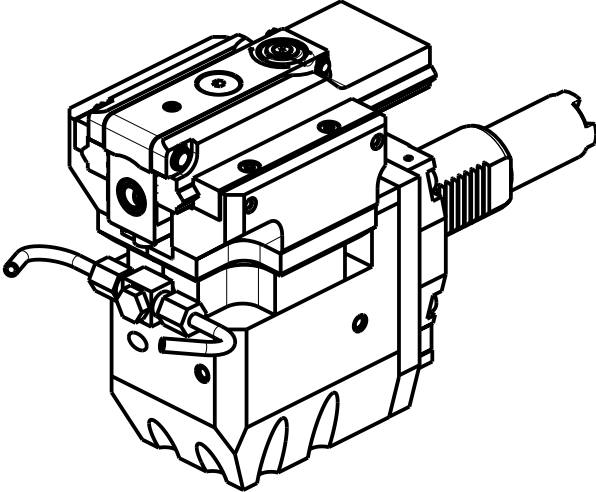
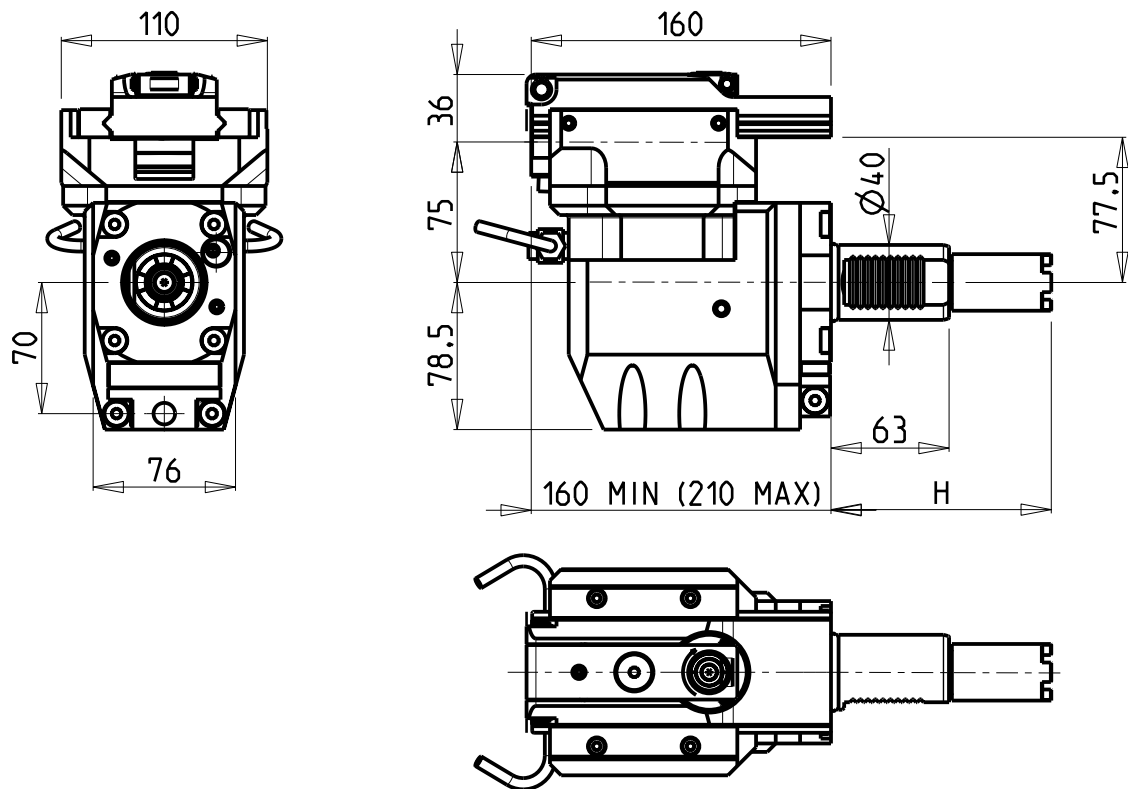


**M.T. srl**  
Via Casino Albini 480  
Tel. 0541/956034-957884  
Fax 0541/956341  
47842 S. GIOVANNI IN M. (RN)  
e-mail: [mtma@mtmarchetti.com](mailto:mtma@mtmarchetti.com)  
<http://www.mtmarchetti.com>

PRODUZIONE MODULI ROTANTI



PAGINA HAS333-3-01




PER UTENSILI STOZZATORI VEDI PAG. TBL400-1-00  
FOR DRIVEN SLOTTING TOOL CUTTING-TOOLS SEE PAGE TBL400-1-00  
FÜR NUTENSTOSS-WERKZEUG SCHNEIDWERKZEUGE SIEHE SEITE TBL400-1-00

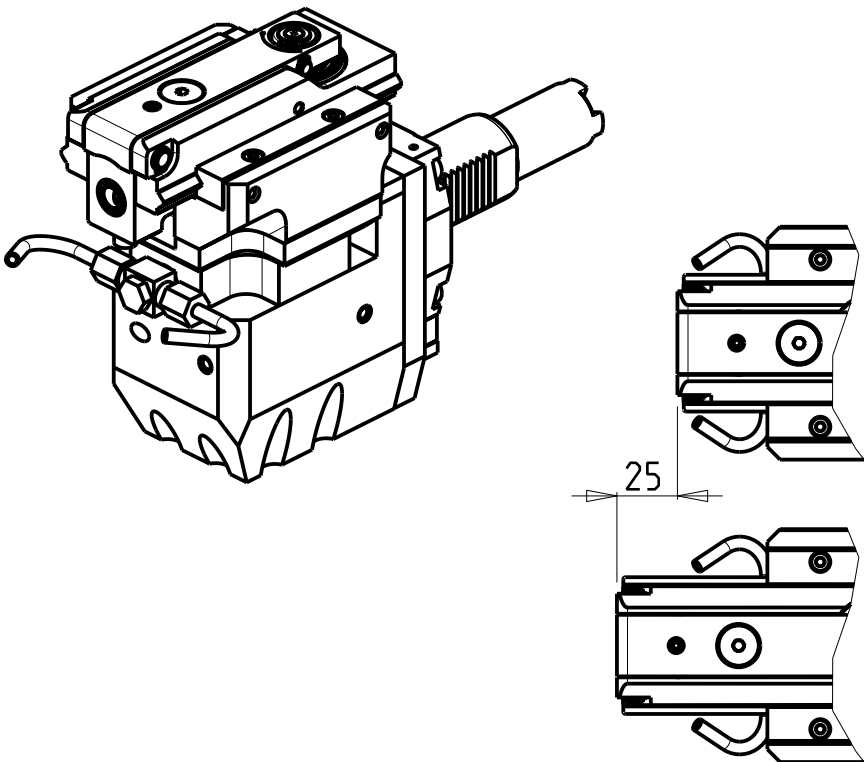
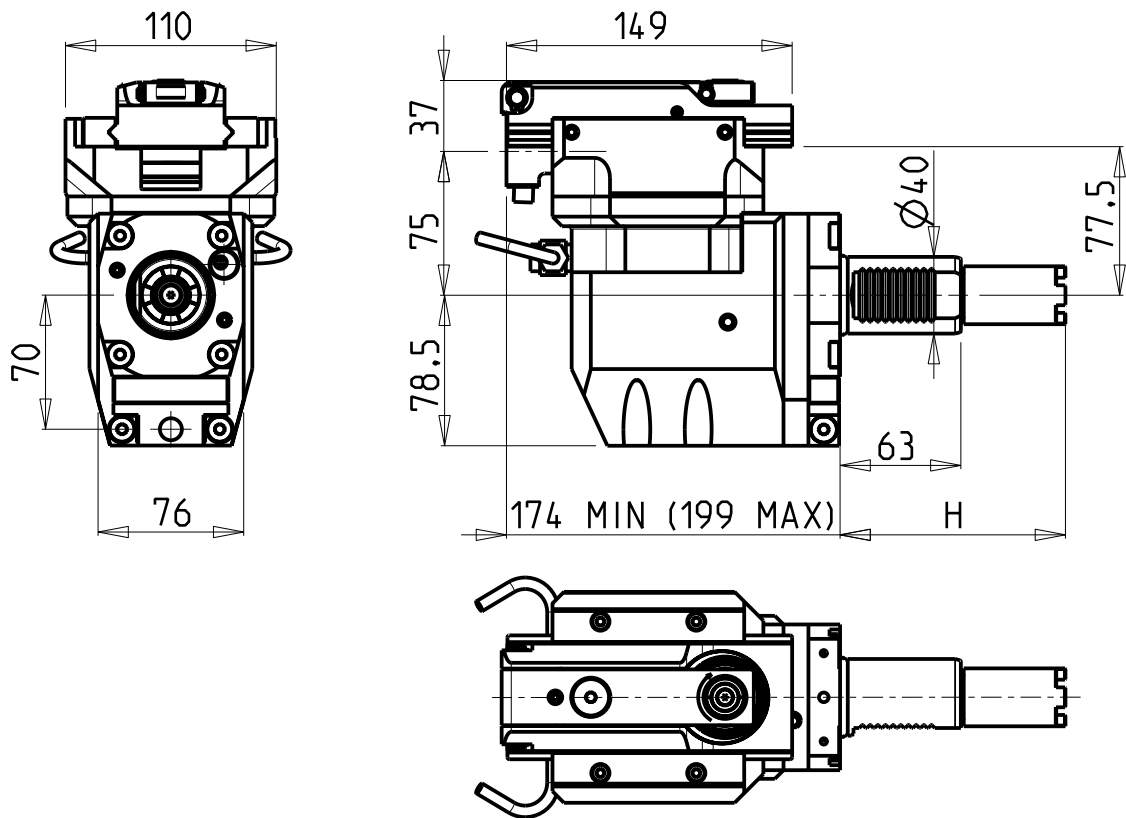
Cod. MT	I	RPM MAX	Lubr. esterna Ext. coolant Aussenkuehlung	H	Tipo Torretta Turret type Revolver typ
HAS0350100	4:1	2000	X	117.55	VDI STANDARD / HYBRID TURRET

HAAS  
MOD: ST10/15/20/25/30/35 - DS30 - TL15/25  
MODULO MOTORIZZATO STOZZATORE CORSA 50mm VDI40  
Slotting driven tool 50mm stroke VDI40  
Keilnutenstossmaschine 50mm Hub VDI40

Subject to change without notice.

**M.T. srl**  
Via Casino Albini 480  
Tel. 0541/956034-957884  
Fax 0541/956341  
47842 S. GIOVANNI IN M. (RN)  
e-mail: [mtma@mtmarchetti.com](mailto:mtma@mtmarchetti.com)  
<http://www.mtmarchetti.com>

PRODUZIONE MODULI ROTANTI  
  
PAGINA HAS360-3-30



PER UTENSILI STOZZATORI VEDI PAG. TBL400-1-00  
FOR DRIVEN SLOTTING TOOL CUTTING-TOOLS SEE PAGE TBL400-1-00  
FÜR NUTENSTOSS-WERKZEUG SCHNEIDWERKZEUGE SIEHE SEITE TBL400-1-00


Cod. MT	I	RPM MAX	Lubr. esterna Ext. coolant Aussenkuehlung	H	Tipo Torretta Turret type Revolver typ
HAS0350200	4:1	2400	X	117,55	VDI STANDARD / HYBRID TURRET

HAAS  
MOD: ST10/15/20/25/30/35 - DS30 - TL15/25  
MODULO MOTORIZZATO STOZZATORE CORSA 25mm VDI40  
Slotting driven tool 25mm stroke VDI40  
Keilnutenstossmaschine 25mm Hub VDI40

Subject to change without notice.

**M.T. srl**  
Via Casino Albini 480  
Tel. 0541/956034-957884  
Fax 0541/956341  
47842 S. GIOVANNI IN M. (RN)  
e-mail: [mtma@mtmarchetti.com](mailto:mtma@mtmarchetti.com)  
<http://www.mtmarchetti.com>

PRODUZIONE MODULI ROTANTI



PAGINA HAS360-3-31

Distributeur/ importateur : Crylax 0033 450 960920 - [info@crylax.com](mailto:info@crylax.com)