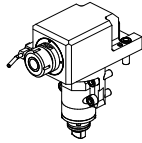
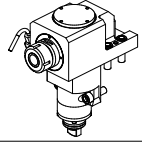
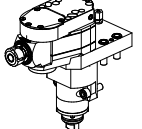
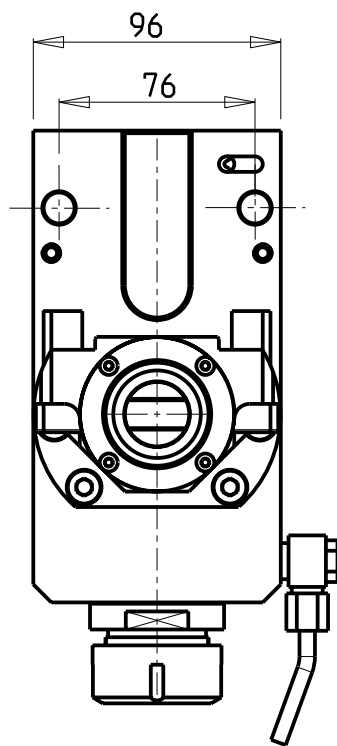
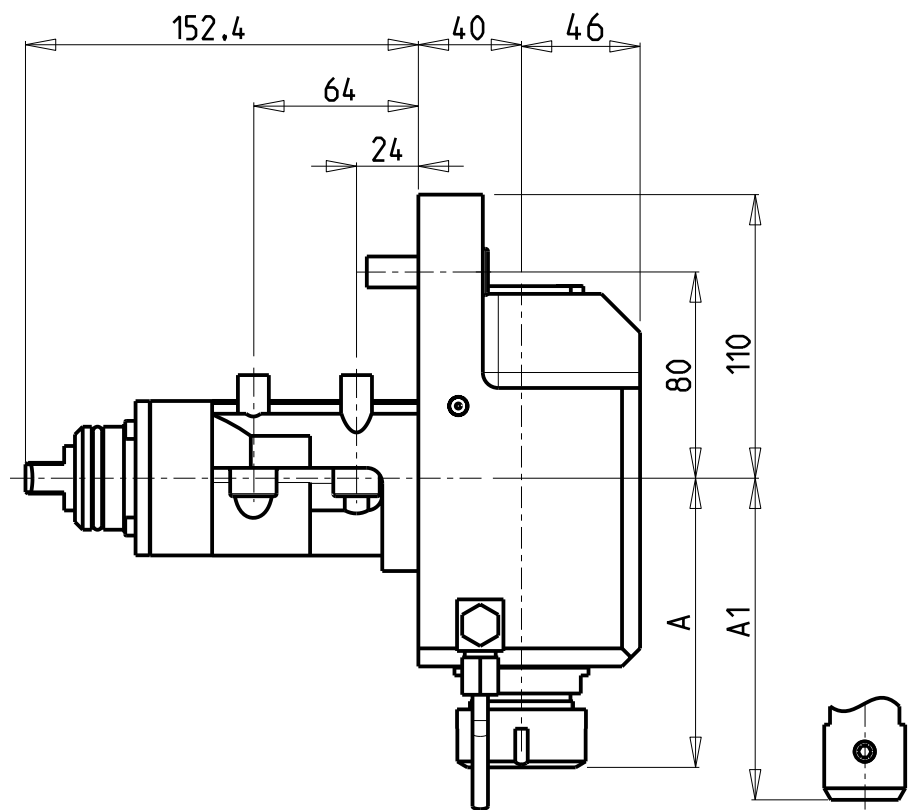


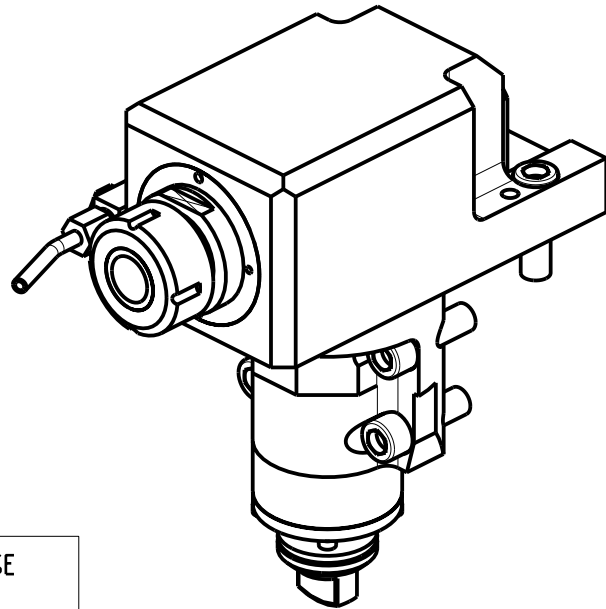
		PAGINA Page Seite
<b>MODULO MOTORIZZATO ASSIALE</b> Axial driven tool Axial angetriebenes Werkzeug		MSL150.3.10
<b>MODULO MOTORIZZATO ASSIALE RIDOTTO 1=2:1</b> Axial geared-down 1=2:1 driven tool Axial angetriebenes Werkzeug untersetzt 1=2:1		MSL190.3.10
<b>MODULO MOTORIZZATO INCLINEVOLE <math>\pm 15^\circ</math> IN Y</b> $\pm 15^\circ$ Y axis adjustable angle driven tool Angetriebenes Werkzeug kippbar $\pm 15^\circ$ in Y		MSL358.3.00

Distributeur/ importateur : Crylax 0033 450 960920 - [info@crylax.com](mailto:info@crylax.com)



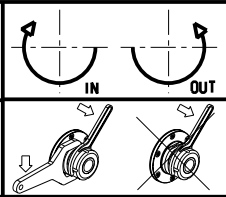
**ATTENZIONE - ATTENTION - ACHTUNG**

- Per lo smontaggio degli utensili utilizzare sempre la chiave di contrasto come indicato nel manuale d'uso.
- For disassembly of the tools use always the contrast key as mentioned in the user instructions.
- Fuer das Abmontieren der Werkzeuge immer den Gegenschlüssel benutzen wie in der Bedienungsanleitung erwaeht.



Cod. MT	Mandrino Spindle Spindel	I	RPM	Coppia Max Max Torque Max Drehmoment	Lubrificazione int. Coolant through Innenkuehlung	Lubrificazione est. Ext. coolant Aussenkuehlung	A	A1	CHIAVI NON INCLUSE Keys not included Schlüssel nicht einbegriffen	
M0290132	ER32	1:1	6000	70Nm	P=70bar	X	112.16	-	CHUB46	CHSTER32
M0290232	ER32	1:1	6000	70Nm	-	X	112.16	-	CHUB46	CHSTER32
M0290140	ER40	1:1	6000	70Nm	P=70bar	X	115.16	-	CHUB46	CHSTER40
M0290332	WELDON 32	1:1	6000	70Nm	P=70bar	X	-	131.5	-	-

DMG-MORI  
MOD: SL300/303  
MODULO MOTORIZZATO ASSIALE  
Axial driven tool  
Axial angetriebenes Werkzeug  
Subject to change without notice.

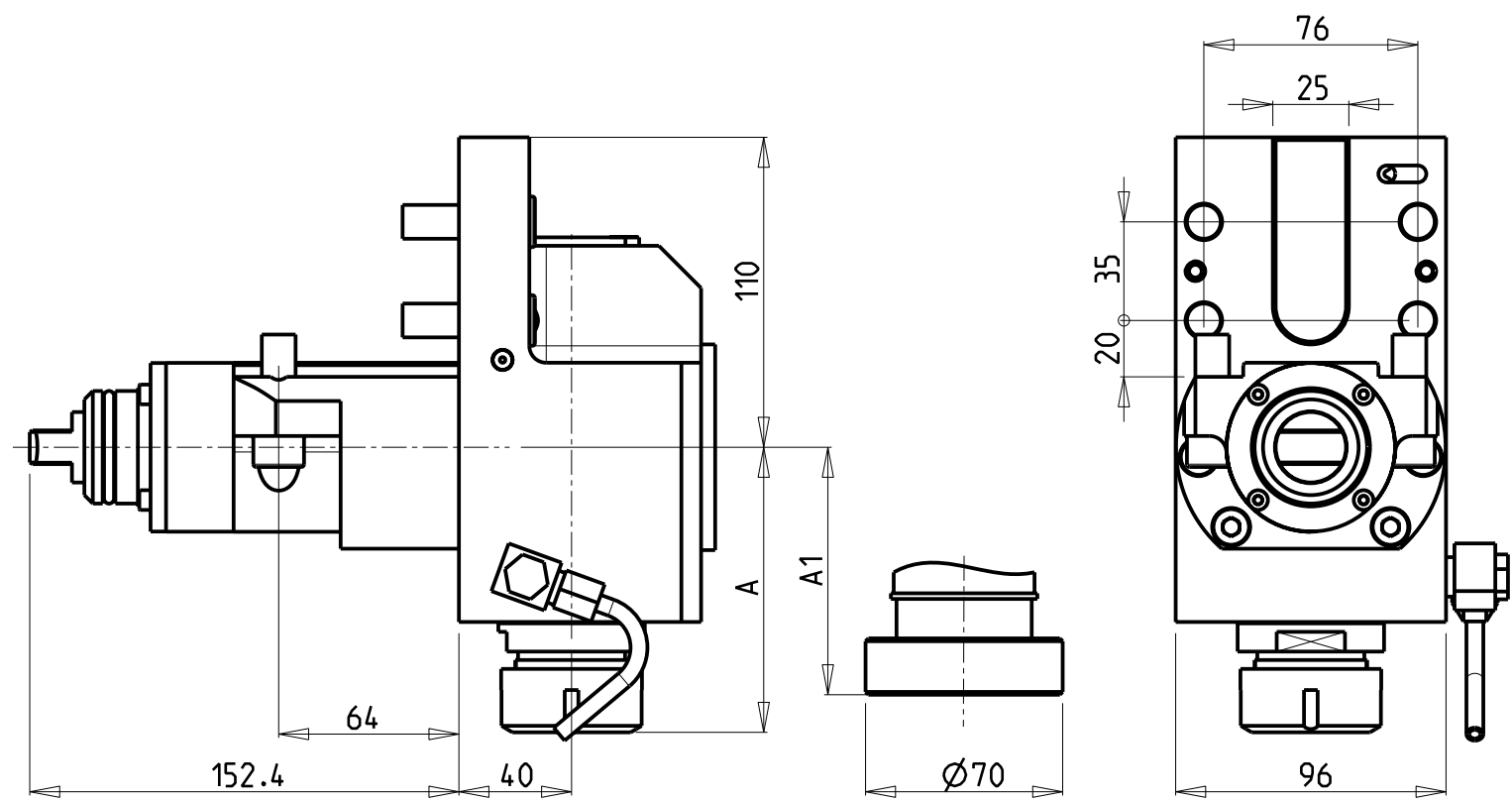


**M.T. srl**  
Via Casino Albini 480  
Tel. 0541/956034-957884  
Fax 0541/956341  
47842 S. GIOVANNI IN M. (RN)  
e-mail: [mtma@mtmarchetti.com](mailto:mtma@mtmarchetti.com)  
<http://www.mtmarchetti.com>

PRODUZIONE MODULI ROTANTI

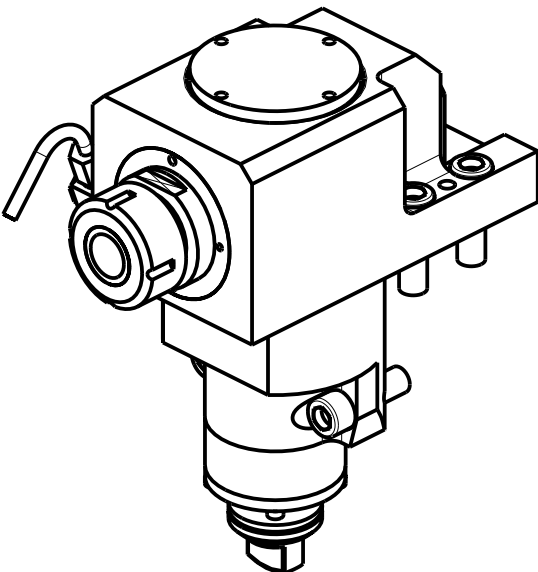


PAGINA MSL150-3-10



ATTENZIONE - ATTENTION - ACHTUNG

- Per lo smontaggio degli utensili utilizzare sempre la chiave di contrasto come indicato nel manuale d'uso.
- For disassembly of the tools use always the contrast key as mentioned in the user instructions.
- Fuer das Abmontieren der Werkzeuge immer den Gegenschluessel benutzen wie in der Bedienungsanleitung erwaeht.



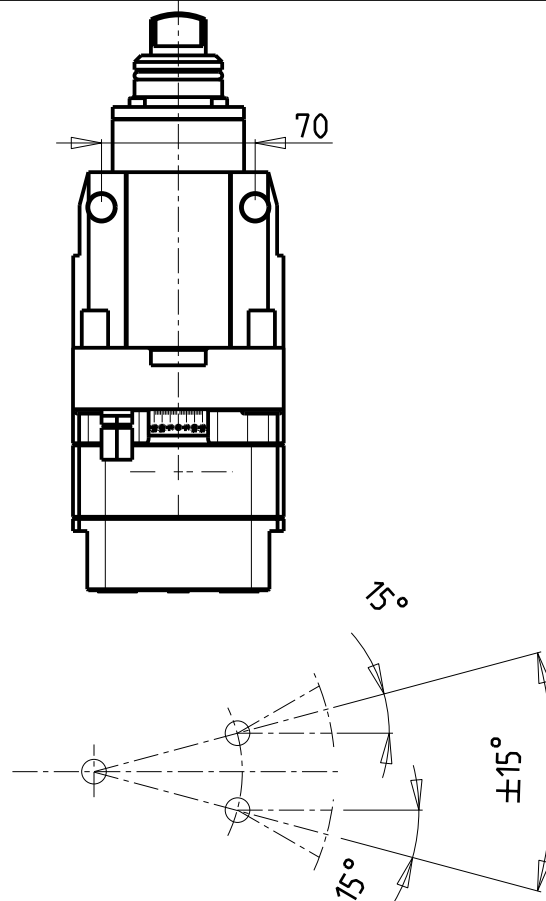
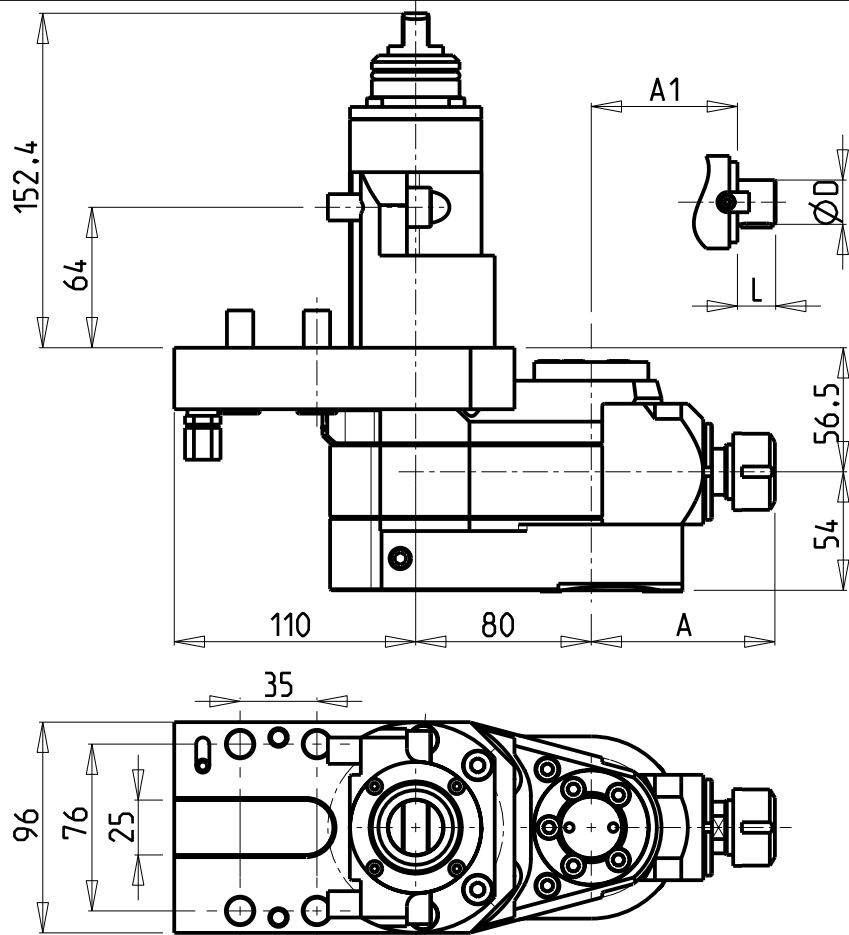
Cod. MT	Mandrino Spindle Spindel	I	RPM	Coppia Max Max Torque Max Drehmoment	Lubrificazione est. Ext. coolant Aussenkuehlung	A	A1	CHIAVI NON INCLUSE Keys not included Schluessel nicht einbegriffen	
M0100832	ER32	2:1	3000	90Nm	X	101.16	-	CHUB46	CHSTER32
M0100470	Ø70	2:1	3000	90Nm	X	-	98.5	-	-

DMG-MORI  
MOD: SL300/303

MODULO MOTORIZZATO ASSIALE RIDOTTO I=2:1  
Axial geared-down I=2:1 driven tool  
Axial angetriebenes Werkzeug untersetzt I=2:1

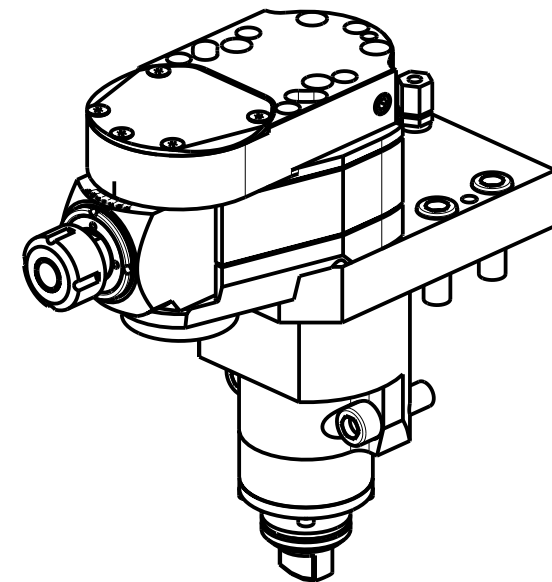
**M.T. srl**  
Via Casino Albini 480  
Tel. 0541/956034-957884  
Fax 0541/956341  
47842 S. GIOVANNI IN M. (RN)  
e-mail: [mtma@mtmarchetti.com](mailto:mtma@mtmarchetti.com)  
<http://www.mtmarchetti.com>

PRODUZIONE MODULI ROTANTI  
  
PAGINA MSL190-3-10



**ATTENZIONE - ATTENTION - ACHTUNG**

- Per lo smontaggio degli utensili utilizzare sempre la chiave di contrasto come indicato nel manuale d'uso.
- For disassembly of the tools use always the contrast key as mentioned in the user instructions.
- Fuer das Abmontieren der Werkzeuge immer den Gegenschlüssel benutzen wie in der Bedienungsanleitung erwaeht.

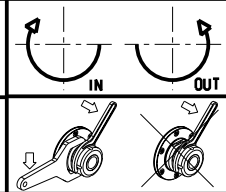


Cod. MT	Mandrino Spindle Spindel	I	RPM	Coppia Max Max Torque Max Drehmoment	Lubrificazione est. Ext. coolant Aussenkuehlung	A	A1	D	L	CHIAVI INCLUSE Keys included Schlüssel inbegriffen	
M0110020	ER20	1:1	6000	40Nm	X	84.16				MNL0210007 o CHUB36	CHSTER20
M0110025	ER25	1:1	6000	40Nm	X	85.66				MNL0210007 o CHUB36	CHSTER25
M0111617	Ø16x17	1:1	6000	40Nm	X	-	65	16	17	MNL0210007 o CHUB36	CH_VTCROCE_M08


DMG-MORI  
MOD: SL300/303

MODULO MOTORIZZATO INCLINEVOLE ±15° IN Y  
±15° Y axis adjustable angle driven tool  
Angetriebenes Werkzeug kippbar ±15° in Y

Subject to change without notice.



**M.T. srl**  
Via Casino Albini 480  
Tel. 0541/956034-957884  
Fax 0541/956341  
47842 S. GIOVANNI IN M. (RN)  
e-mail: [mtma@mtmarchetti.com](mailto:mtma@mtmarchetti.com)  
<http://www.mtmarchetti.com>

PRODUZIONE MODULI ROTANTI  
  
PAGINA MSL358-3-00

Distributeur/ importateur : Crylax 0033 450 960920 - [info@crylax.com](mailto:info@crylax.com)