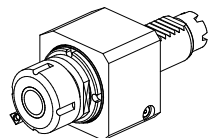
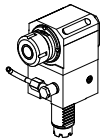
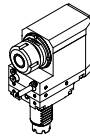
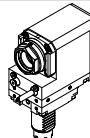
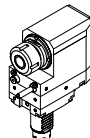
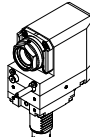
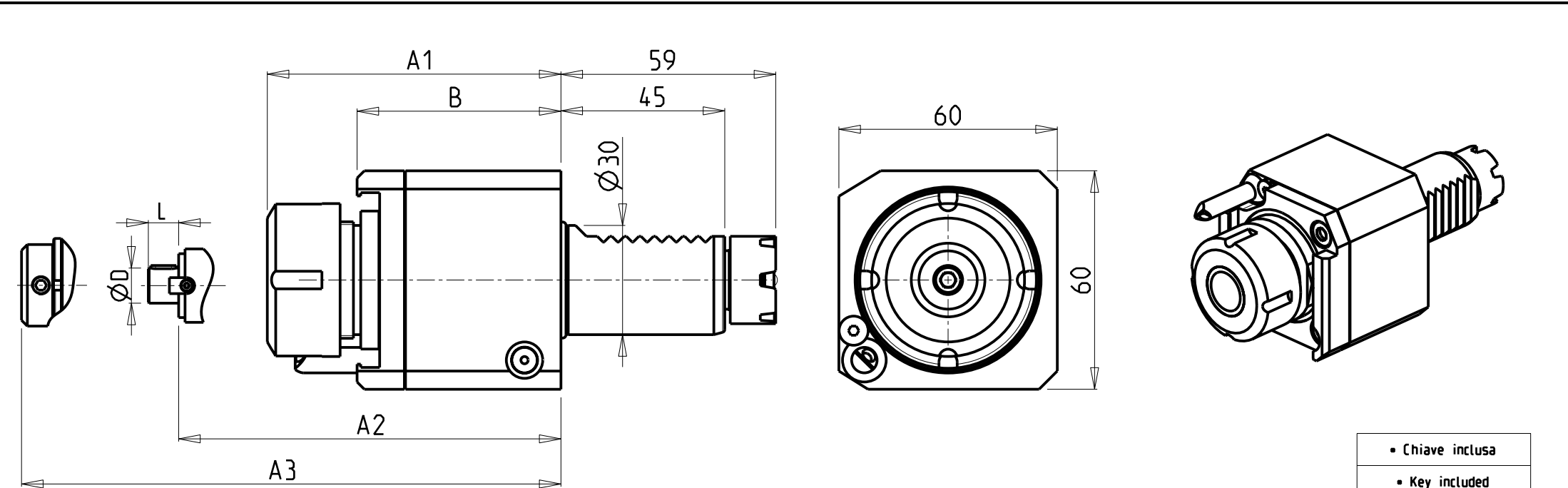


		PAGINA Page Seite
MODULO MOTORIZZATO ASSIALE VDI30 Axial driven tool VDI30 Axial angetriebenes Werkzeug VDI30		BAR014.1.00
MODULO MOTORIZZATO RADIALE VDI30 Radial driven tool VDI30 Radial angetriebenes Werkzeug VDI30		BAR015.1.00
MODULO MOTORIZZATO RADIALE ARRETRATO VDI30 H=75mm Radial rear-set driven tool VDI30 H=75mm Radial angetriebenes Werkzeug zurueckversetzt VDI30 H=75mm		BAR015.1.60
MODULO MOTORIZZATO RADIALE ARRETRATO MTSK VDI30 H=75mm Radial MTSK rear-set driven tool VDI30 H=75mm Radial MTSK angetriebenes Werkzeug zurueckversetzt VDI30 H=75mm		BAR015.1.60.K
MODULO MOTORIZZATO RADIALE ARRETRATO VDI30 H=85mm Radial rear-set driven tool VDI30 H=85mm Radial angetriebenes Werkzeug zurueckversetzt VDI30 H=85mm		BAR015.1.70
MODULO MOTORIZZATO RADIALE ARRETRATO MTSK VDI30 H=85mm Radial MTSK rear-set driven tool VDI30 H=85mm Radial MTSK angetriebenes Werkzeug zurueckversetzt VDI30 H=85mm		BAR015.1.70.K

Distributeur/ importateur : Crylax 0033 450 960920 - info@crylax.com

Distributeur/ importateur : Crylax 0033 450 960920 - info@crylax.com



- Chiave inclusa
- Key included
- Schluessel inbegriffen

Cod. MT	Mandrino Spindle Spindel	I	RPM	Coppia Max Max Torque Max Drehmoment	Lubrificazione int. Coolant through Innenkuehlung	Lubrificazione est. Ext. coolant Aussenkuehlung	ØD	L	A1	A2	A3	B	CHIAVI NON INCLUDE Keys not included Schluessel nicht einbegriffen		
BAR0040125	ER25	1:1	6000	32Nm		X			80.66			56	-	CHSTER25	OKU0290009
BAR0041125	ER25	1:1	6000	32Nm	P=30bar	X			94.66			70	-	CHSTER25	OKU0290009
BAR0040225	ERA25	1:1	6000	32Nm		X			61			56	CHUB27	CHTAER25ZC	OKU0290009
BAR0041225	ERA25	1:1	6000	32Nm	P=30bar	X			75			70	CHUB27	CHTAER25ZC	OKU0290009
BAR0040316	WELDON16	1:1	6000	32Nm		X					66.5	56	-	-	-
BAR0041316	WELDON16	1:1	6000	32Nm	P=30bar	X					80	70	-	-	-
BAR0040416	Ø16x17	1:1	6000	32Nm		X	16	17		59.5		56	-	CH_VTCROCE_M08	OKU0290009
BAR0040422	Ø22x19	1:1	6000	32Nm		X	22	19		61.5		56	-	CH_VTCROCE_M10	OKU0290009

BARUFFALDI
VDI 30

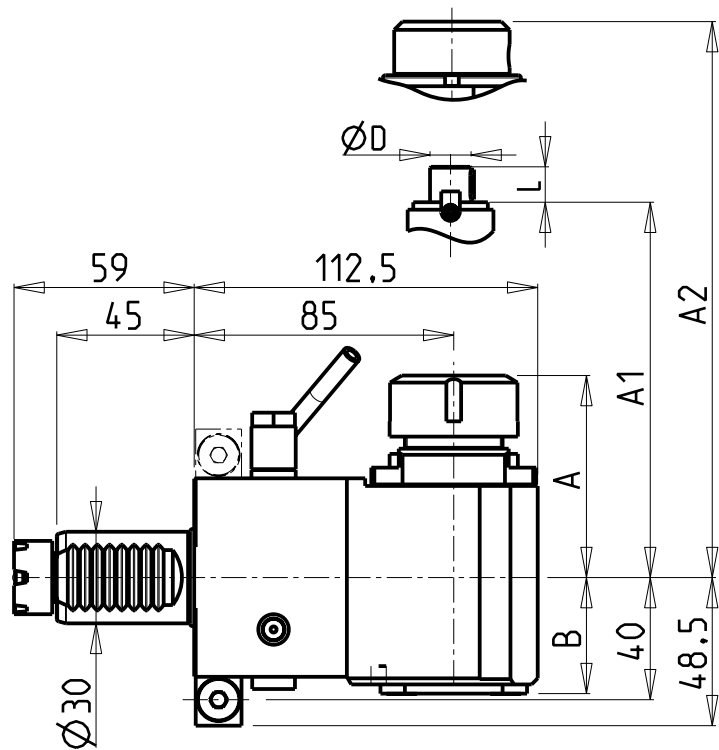
Distributeur/ importateur : Crylax 0033 450 960920 - info@crylax.com

MODULO MOTORIZZATO ASSIALE VDI30
Axial driven tool VDI30
Axial angetriebenes Werkzeug VDI30

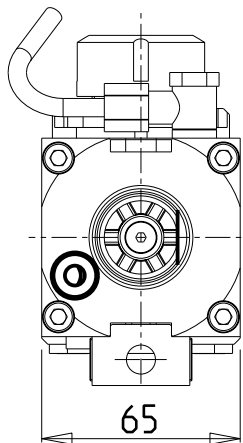
M.T. srl
Via Casino Albini 480
Tel. 0541/956034-957884
Fax 0541/956341
47842 S. GIOVANNI IN M. (RN)
e-mail: mtma@mtmarchetti.com
<http://www.mtmarchetti.com>

PRODUZIONE MODULI ROTANTI

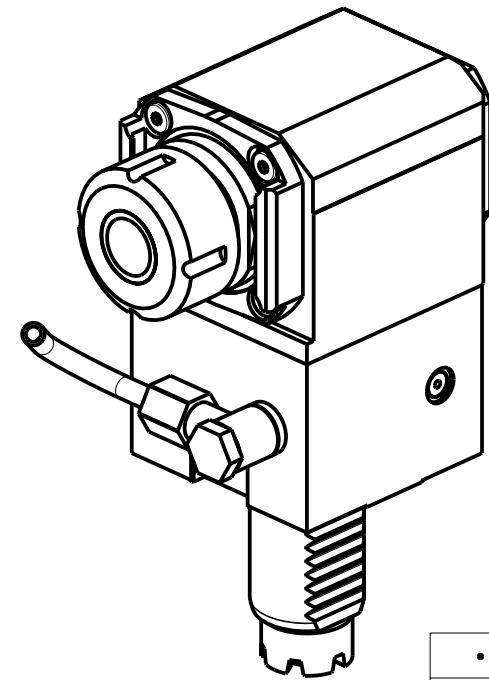
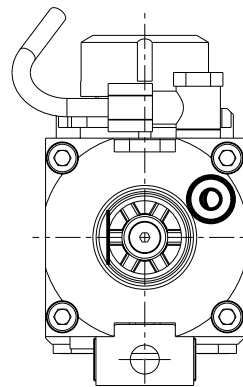
PAGINA BAR014-1-00



versione dx
right version
version rechts



versione sx
left version
version links



- Chiave inclusa
- Key included
- Schlüssel inbegriffen

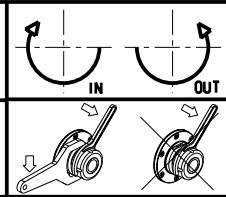
Cod. MT		Mandrino Spindle Spindel	I	RPM	Coppia Max Max Torque Max Drehmoment	Lubrificazione int. Coolant through Innenkuehlung	Lubrificazione est. Ext. coolant Aussenkuehlung	ØD	L	A	A1	A2	B	CHIAVI NON INCLUDE Keys not included Schlüssel nicht einbegriffen	
versione dx right version version rechts	versione sx left version version links														
BAR0060125	BAR0061125	ER25	1:1	6000	32Nm	-	X	-	-	66.2	-	-	38	OKU0290009 ▪	CHSTER25
BAR0060225	BAR0061225	ER25	1:1	6000	32Nm	P=70bar	X	-	-	66.2	-	-	48	OKU0290009 ▪	CHSTER25
BAR0060316	BAR0061316	WELDON16	1:1	6000	32Nm	-	X	-	-	-	-	54.5	38	-	-
BAR0060416	BAR0061416	Ø16x17	1:1	6000	32Nm	-	X	16	17	-	45	-	38	OKU0290009 ▪	CH_VTCROCE_M08 ▪
BAR0060422	BAR0061422	Ø22x19	1:1	6000	32Nm	-	X	22	19	-	47	-	38	OKU0290009 ▪	CH_VTCROCE_M10 ▪

BARUFFALDI
VDI 30

Distributeur/ importateur : Crylax 0033 450 960920 - info@crylax.com

MODULO MOTORIZZATO RADIALE VDI30
Radial driven tool VDI30
Radial angetriebenes Werkzeug VDI30

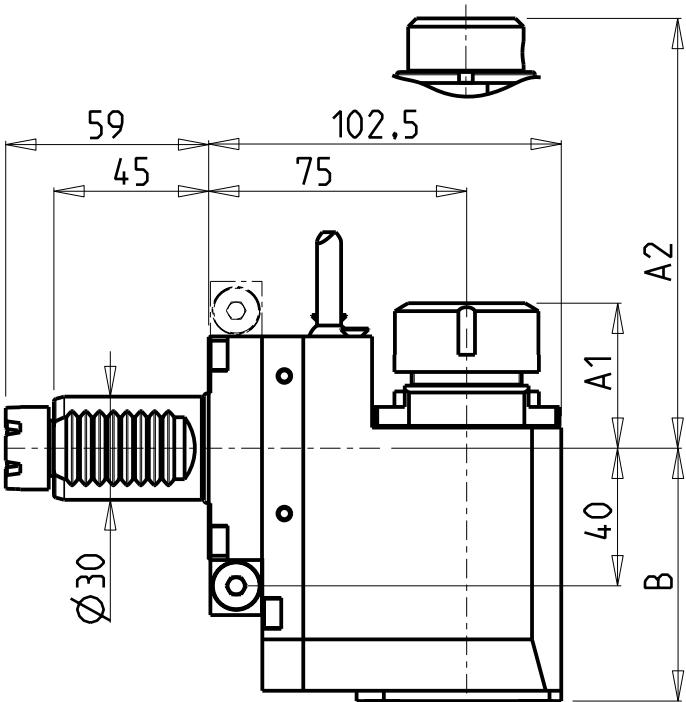
Subject to change without notice.



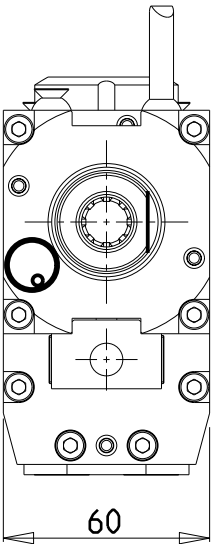
M.T. srl
Via Casino Albini 480
Tel. 0541/956034-957884
Fax 0541/956341
47842 S. GIOVANNI IN M. (RN)
e-mail: mtma@mtmarchetti.com
<http://www.mtmarchetti.com>

PRODUZIONE MODULI ROTANTI

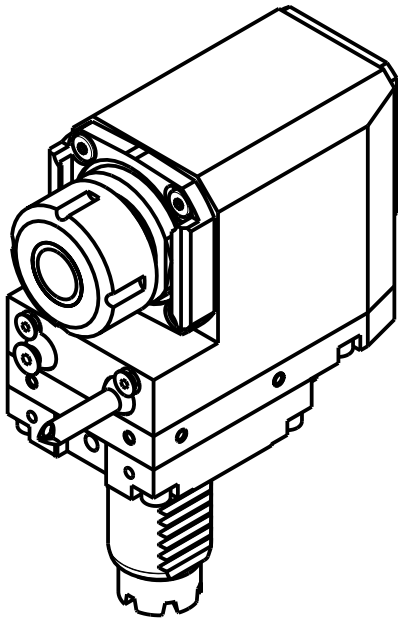
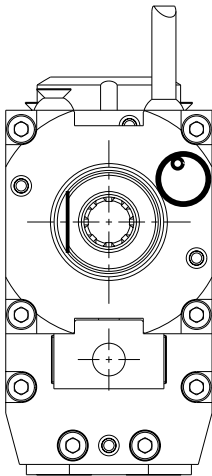
PAGINA BAR015-1-00



versione dx
right version
version rechts



versione sx
left version
version links



Cod. MT		Mandrino Spindle Spindel	I	RPM	Coppia Max Max Torque Max Drehmoment	Lubrificazione int. Coolant through Innenkuehlung	Lubrificazione est. Ext. coolant Aussenkuehlung	A1	A2	B	CHIAVI NON INCLUDE Keys not included Schlüssel nicht einbegriffen				
versione dx right version version rechts	versione sx left version version links														
BAR0080120	BAR0081120	ER20	1:1	6000	32Nm		X	41.16		73.5	-	CHSTER20	OKU0290009	▪	
BAR0080320	BAR0081320	ERA20	1:1	6000	32Nm		X	24.5		73.5	CHUB22	CHTAER20ZC	▪	OKU0290009	▪
BAR0080420	BAR0081420	ERA20	1:1	6000	32Nm	P=70bar	X	24.5		83.5	CHUB22	CHTAER20ZC	▪	OKU0290009	▪
BAR0080125	BAR0081125	ER25	1:1	6000	32Nm		X	42.16		73.5	-	CHSTER25	OKU0290009		
BAR0080225	BAR0081225	ER25	1:1	6000	32Nm	P=70bar	X	42.16		83.5	-	CHSTER25	OKU0290009		
BAR0080325	BAR0081325	ERA25	1:1	6000	32Nm		X	28.5		73.5	CHUB27	CHTAER25ZC	▪	OKU0290009	▪
BAR0080425	BAR0081425	ERA25	1:1	6000	32Nm	P=70bar	X	28.5		83.5	CHUB27	CHTAER25ZC	▪	OKU0290009	▪
BAR0080516	BAR0081516	WELDON16	1:1	6000	32Nm		X		27.5	73.5	-	-		-	

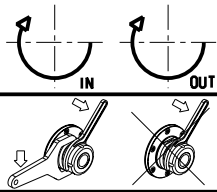
- Chiave inclusa
- Key included
- Schlüssel inbegriffen

BARUFFALDI
VDI 30

Distributeur/ importateur : Crylax 0033 450 960920 - info@crylax.com

MODULO MOTORIZZATO RADIALE ARRETRATO VDI30 H=75mm
Radial rear-set driven tool VDI30 H=75mm
Radial angetriebenes Werkzeug zurueckversetzt VDI30 H=75mm

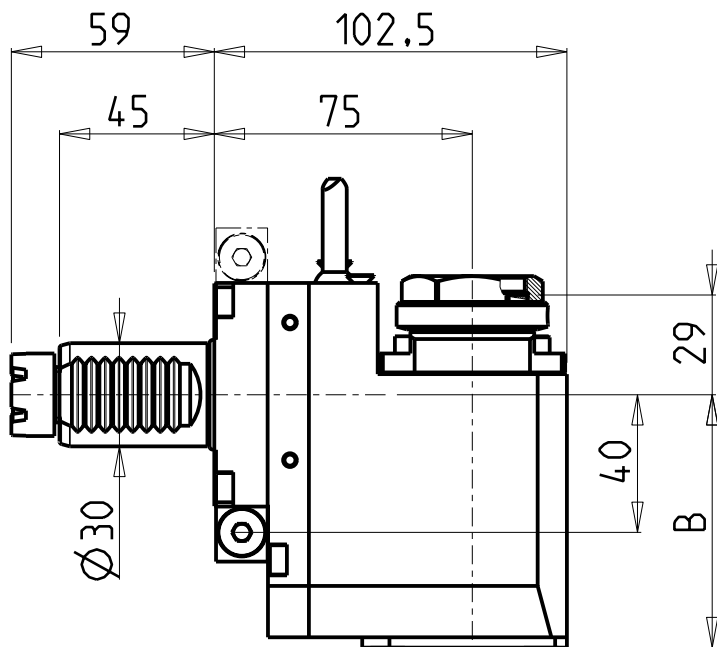
Subject to change without notice.



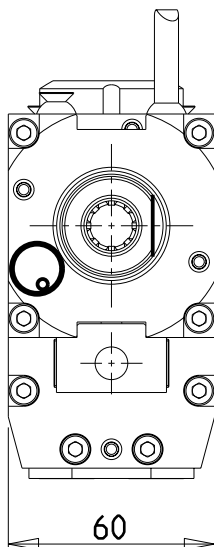
M.T. srl
Via Casino Albini 480
Tel. 0541/956034-957884
Fax 0541/956341
47842 S. GIOVANNI IN M. (RN)
e-mail: mtma@mtmarchetti.com
<http://www.mtmarchetti.com>

PRODUZIONE MODULI ROTANTI

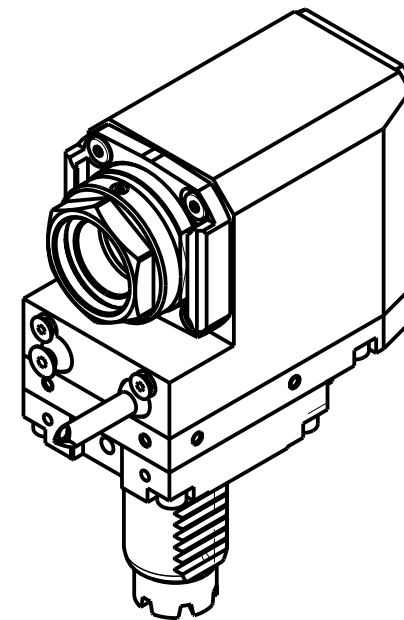
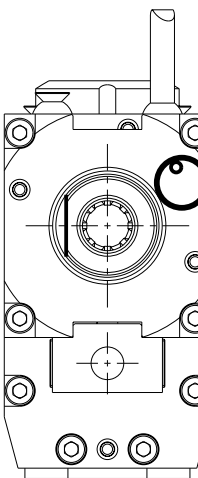
PAGINA BAR015-1-60



versione dx
right version
version rechts



versione sx
left version
version links



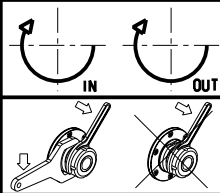
PER PORTAUTENSILI MODULARI MTSK-32 VEDI PAG. TBL300-1-32
FOR MTSK-32 QUICK CHANGE TOOLHOLDERS CLAMPINGS SEE PAGE TBL300-1-32
FÜR MTSK-32 MODULARE WERKZEUGAUFNAHMEN SIEHE SEITE TBL300-1-32

- Chiave inclusa
- Key included
- Schlüssel inbegriffen

Cod. MT		Mandrino Spindle Spindel	I	RPM	Coppia Max Max Torque Max Drehmoment	Lubrificazione int. Coolant through Innenkuehlung	Lubrificazione est. Ext. coolant Aussenkuehlung	B	CHIAVI NON INCLUDE Keys not included Schlüssel nicht einbegriffen	
versione dx right version version rechts	versione sx left version version links									
BAR0170132	BAR0171132	MTSK-32	1:1	6000	32Nm	-	X	73.5	C HUB36	OKU0290009 ■
BAR0170232	BAR0171232	MTSK-32	1:1	6000	32Nm	P=70bar	X	83.5	C HUB36	OKU0290009 ■

BARUFFALDI
VDI 30 Distributeur/ importateur : Crylax 0033 450 960920 - info@crylax.com

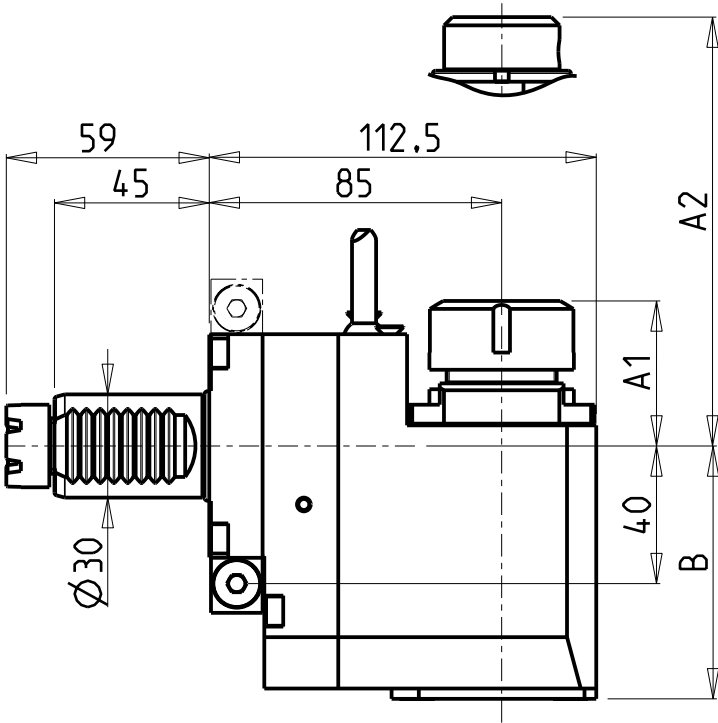
MODULO MOTORIZZATO RADIALE ARRETRATO MTSK VDI30 H=75mm
Radial MTSK rear-set driven tool VDI30 H=75mm
Radial MTSK angetriebenes Werkzeug zurueckversetzt VDI30 H=75mm



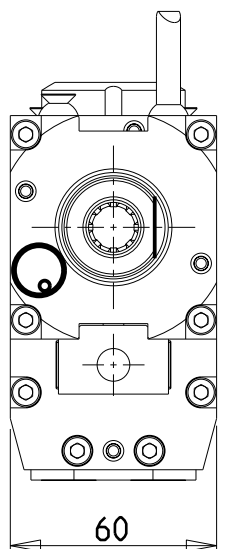
M.T. srl
Via Casino Albini 480
Tel. 0541/956034-957884
Fax 0541/956341
47842 S. GIOVANNI IN M. (RN)
e-mail: mtma@mtmarchetti.com
<http://www.mtmarchetti.com>

PRODUZIONE MODULI ROTANTI

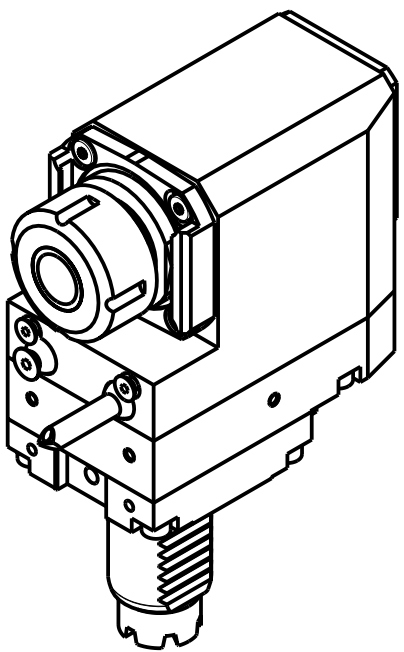
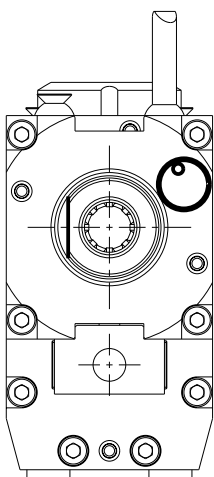
PAGINA BAR015-1-60-K



versione dx
right version
version rechts



versione sx
left version
version links



- Chiave inclusa
- Key included
- Schlüssel inbegriffen

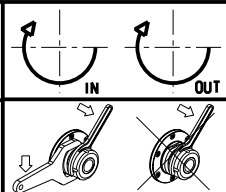
Cod. MT		Mandrino Spindle Spindel	I	RPM	Coppia Max Max Torque Max Drehmoment	Lubrificazione int. Coolant through Innenkuehlung	Lubrificazione est. Ext. coolant Aussenkuehlung	A1	A2	B	CHIAVI NON INCLUDE Keys not included Schlüssel nicht einbegriffen		
versione dx right version version rechts	versione sx left version version links												
BAR0070120	BAR0071120	ER20	1:1	6000	32Nm		X	41.16		73.5	-	CHSTER20	OKU0290009
BAR0070320	BAR0071320	ERA20	1:1	6000	32Nm		X	24.5		73.5	CHUB22	CHTAER20ZC	OKU0290009
BAR0070420	BAR0071420	ERA20	1:1	6000	32Nm	P=70bar	X	24.5		83.5	CHUB22	CHTAER20ZC	OKU0290009
BAR0070125	BAR0071125	ER25	1:1	6000	32Nm		X	42.16		73.5	-	CHSTER25	OKU0290009
BAR0070225	BAR0071225	ER25	1:1	6000	32Nm	P=70bar	X	42.16		83.5	-	CHSTER25	OKU0290009
BAR0070325	BAR0071325	ERA25	1:1	6000	32Nm		X	28.5		73.5	CHUB27	CHTAER25ZC	OKU0290009
BAR0070425	BAR0071425	ERA25	1:1	6000	32Nm	P=70bar	X	28.5		83.5	CHUB27	CHTAER25ZC	OKU0290009
BAR0070516	BAR0071516	WELDON16	1:1	6000	32Nm		X		27.5	73.5	-	-	-

BARUFFALDI
VDI 30

Distributeur/ importateur : Crylax 0033 450 960920 - info@crylax.com

MODULO MOTORIZZATO RADIALE ARRETRATO VDI30 H=85mm
Radial rear-set driven tool VDI30 H=85mm
Radial angetriebenes Werkzeug zurueckversetzt VDI30 H=85mm

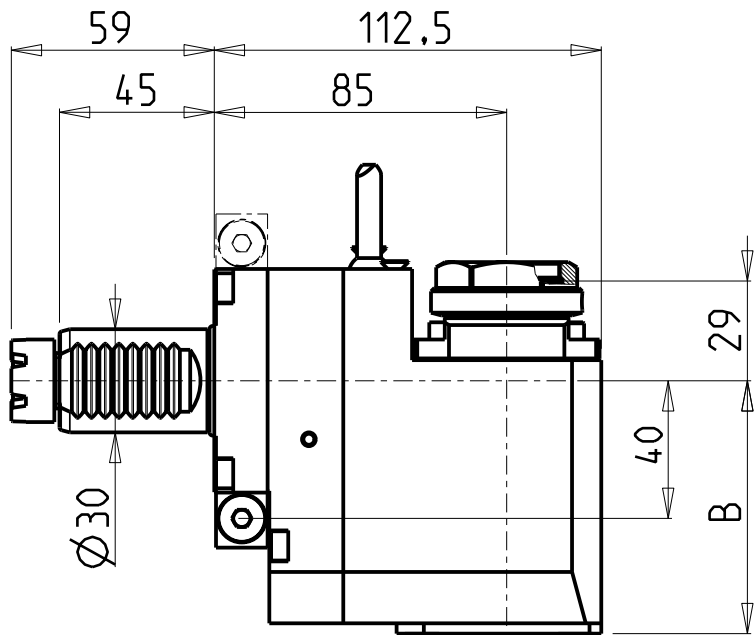
Subject to change without notice.



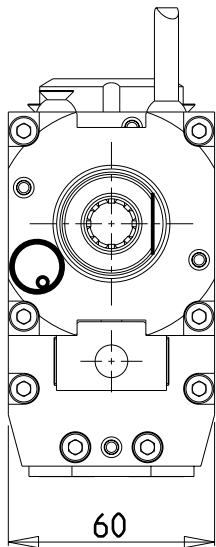
M.T. srl
Via Casino Albini 480
Tel. 0541/956034-957884
Fax 0541/956341
47842 S. GIOVANNI IN M. (RN)
e-mail: mtma@mtmarchetti.com
<http://www.mtmarchetti.com>

PRODUZIONE MODULI ROTANTI

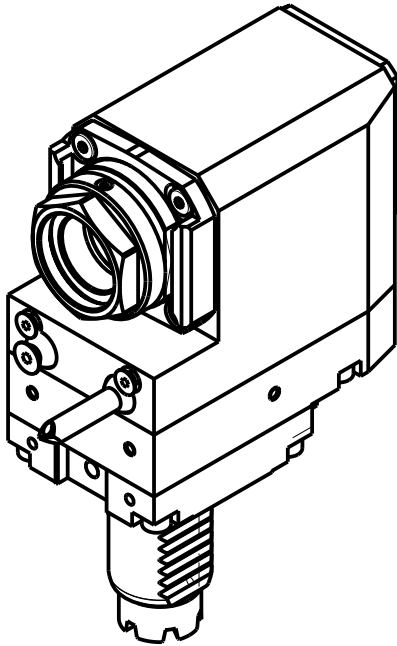
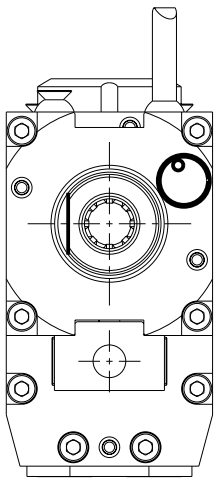
PAGINA BAR015-1-70



versione dx
right version
version rechts



versione sx
left version
version links



PER PORTAUTENSILI MODULARI MTSK-32 VEDI PAG. TBL300-1-32
FOR MTSK-32 QUICK CHANGE TOOLHOLDERS CLAMPINGS SEE PAGE TBL300-1-32
FÜR MTSK-32 MODULARE WERKZEUGAUFNAHMEN SIEHE SEITE TBL300-1-32

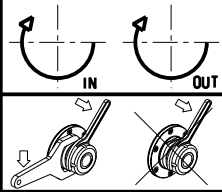
- Chiave inclusa
- Key included
- Schlüssel inbegriffen

Cod. MT		Mandrino Spindle Spindel	I	RPM	Coppia Max Max Torque Max Drehmoment	Lubrificazione int. Coolant through Innenkuehlung	Lubrificazione est. Exl. coolant Aussenkuehlung	B	CHIAVI NON INCLUDE Keys not included Schlüssel nicht einbegriffen	
versione dx right version version rechts	versione sx left version version links									
BAR0160132	BAR0161132	MTSK-32	1:1	6000	32Nm	-	X	73.5	C HUB36	OKU0290009 ■
BAR0160232	BAR0161232	MTSK-32	1:1	6000	32Nm	P=70bar	X	83.5	C HUB36	OKU0290009 ■

BARUFFALDI
VDI 30

Distributeur/ importateur : Crylax 0033 450 960920 - info@crylax.com

MODULO MOTORIZZATO RADIALE ARRETRATO MTSK VDI30 H=85mm
Radial MTSK rear-set driven tool VDI30 H=85mm
Radial MTSK angetriebenes Werkzeug zurueckversetzt VDI30 H=85mm



M.T. srl
Via Casino Albini 480
Tel. 0541/956034-957884
Fax 0541/956341
47842 S. GIOVANNI IN M. (RN)
e-mail: mtma@mtmarchetti.com
<http://www.mtmarchetti.com>

PRODUZIONE MODULI ROTANTI

PAGINA BAR015-1-70-K